

LEASING NOW



ZINFANDEL VILLAGE

2825 & 2859 ZINFANDEL DR.
RANCHO CORDOVA
CA 95670

RETAIL SHOWROOM W/ WAREHOUSE +/-7833 SF

RETAIL 2ND GEN SALON SPACE +/-1,400 SF

RIGHT OFF HWY 50 & ZINFANDEL



Jayna DeSoiza | 916.638.3890 | jayna@kcmre.com
CA DRE #01941191

Brian Rabe | 916.601.0578 | brabe@kcmre.com
CA DRE #01743359

ZINFANDEL VILLAGE

RETAIL SPACE | FOR LEASE

PHOTOS &
PROPERTY DETAILS



SKECHERS

GALBIZIP
KOREAN BBQ HOUSE



Little Caesars

S&C^o



Property Details & Highlights

- 2nd Gen Salon +/- 1 400 SF
- Former LL Flooring Showroom & Warehouse 7833SF
- Highly Visible Monument Signage Available
- \$4.2M Exterior Remodel completed in 2017
- 44,000 cars per day
- Ample Parking
- New Starbucks location - drive thru traffic
- Skecher's shoe store anchor

ZINFANDEL VILLAGE

RETAIL SPACE | FOR LEASE

2825

ZINFANDEL

Former Salon
Salon stations open concept
Shampoo bowls in rear
Office and breakroom



Lease Rate \$1.85/SF + NNN

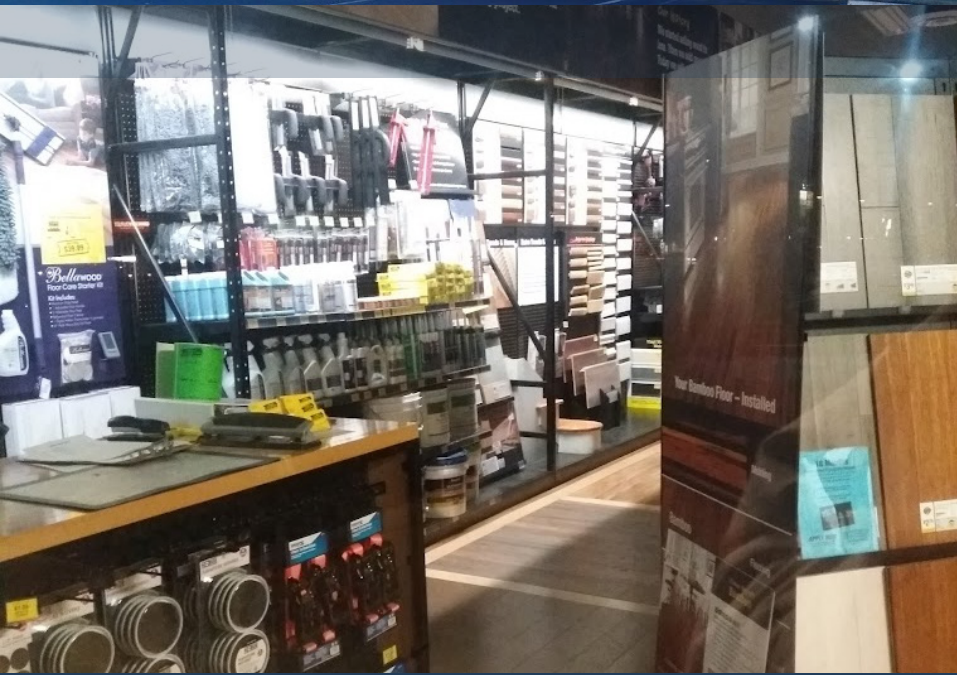
NNN's estimated at \$0.65/SF

ZINFANDEL VILLAGE

RETAIL SPACE | FOR LEASE

2859

ZINFANDEL



Former LL Flooring
Large Open Floorplan
Retail Showroom
Warehouse w/ Roll Up door
Prime End Cap Location

Lease Rate \$1.85/SF + NNN

NNN's estimated at \$0.65/SF

ZINFANDEL VILLAGE LOCATION AERIAL

RETAIL SPACE | FOR LEASE

