

# STONE CREEK - LAND FOR SALE

NW/C of 51st Street & 193rd E. Ave. | Tulsa, OK



## PROPERTY HIGHLIGHTS

- Commercial Development Tract
- 214,279 sq. ft. (Approx. 4.92 Acres)
- 465.85' frontage to S. 193rd E. Ave.
- 467.89' frontage to E. 51st Street
- CS Zoning (Commercial Shopping)
- 30,900 sq. ft. Retail Center Potential



## DRIVE TIME DEMOGRAPHICS

	5 MINUTES	10 MINUTES	15 MINUTES
DAYTIME POPULATION	14,627	51,228	150,144
TOTAL HOUSEHOLDS	8,347	25,638	58,162
TOTAL POPULATION	22,735	67,532	155,193
AVERAGE HH SIZE	2.72	2.63	2.66
AVERAGE HH INCOME	\$106,400	\$96,564	\$90,903

DEMOGRAPHICS - SOURCE: ESRI 2025



9,447 Vehicles per day - E. 51st Street  
 11,642 Vehicles per day - S. 193rd E. Ave.

TRAFFIC COUNT - SOURCE: INCOG 2025

## BAUER & ASSOCIATES, REALTORS®

"A LEADER IN TULSA COMMERCIAL REAL ESTATE SINCE 1979"

Commercial - Industrial - Investment Property - Property Management

6846 S. Canton Ave., Suite 100, Tulsa, OK 74136

All statements herein are for information purposes only and are believed to be reliable; however, no warranty or representation is made as to the accuracy thereof and the same is submitted subject to errors, omissions, change of price, terms, conditions and prior sale or lease.

GROVER BAUER, CCIM, SIOR

Office: 918-665-1210

www.bauertulsa.com

# STONE CREEK - LAND FOR SALE

NW/C of 51st Street & 193rd E. Ave. | Tulsa, OK

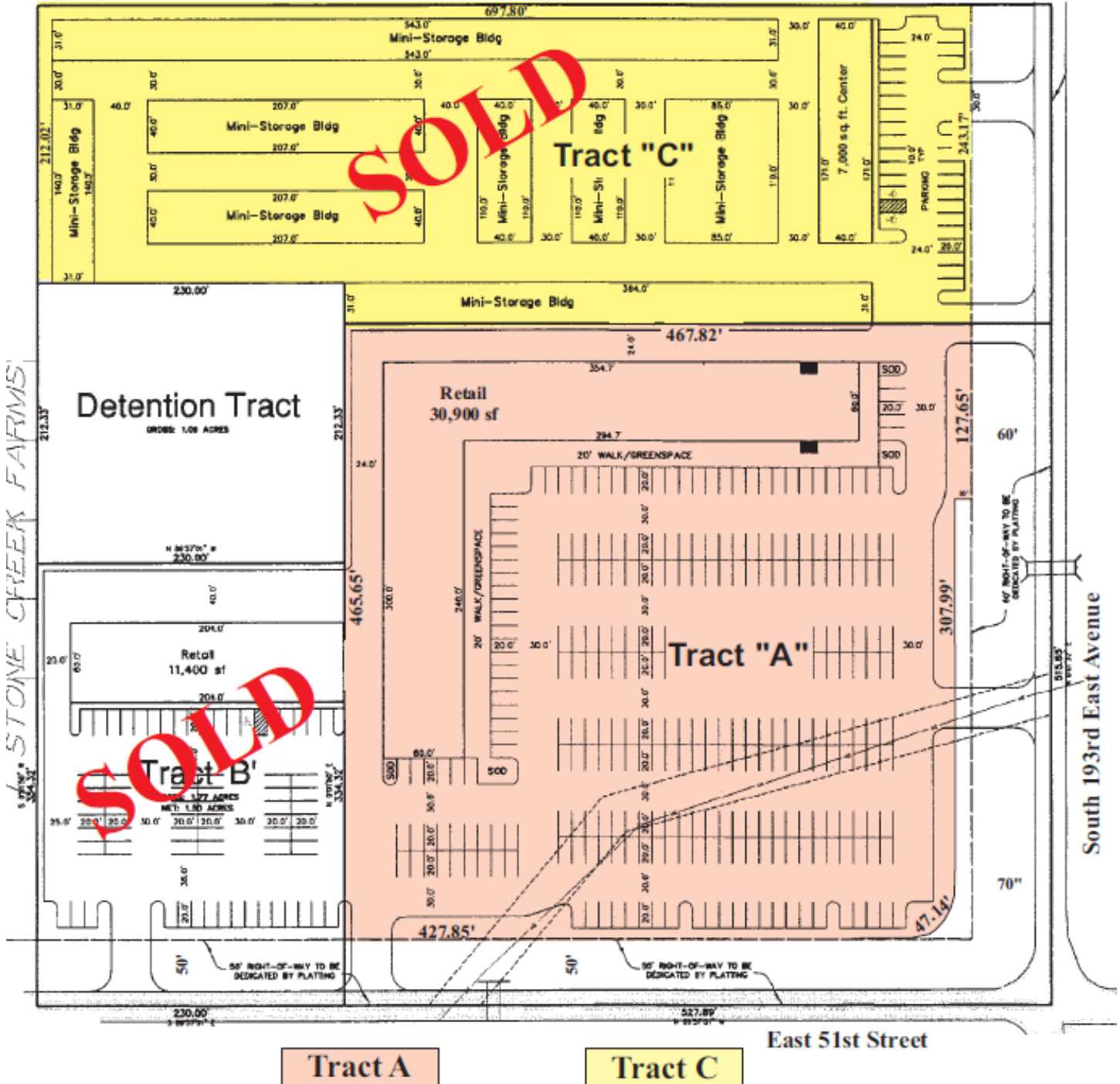


Northwest Corner E. 51st Street & S. 193rd E. Avenue

Tulsa, Oklahoma

Possible Site Plan

STONE CREEK FARMS VILLAGE



Tract A

Tract C

East 51st Street

South 193rd East Avenue

**BAUER & ASSOCIATES, REALTORS®**

"A LEADER IN TULSA COMMERCIAL REAL ESTATE SINCE 1979"

Commercial - Industrial - Investment Property - Property Management

6846 S. Canton Ave., Suite 100, Tulsa, OK 74136

All statements herein are for information purposes only and are believed to be reliable; however, no warranty or representation is made as to the accuracy thereof and the same is submitted subject to errors, omissions, change of price, terms, conditions and prior sale or lease.

**GROVER BAUER, CCIM, SIOR**

Office: 918-665-1210

[www.bauertulsa.com](http://www.bauertulsa.com)

