

**Midtown
Office Space
Available**



Providence Center

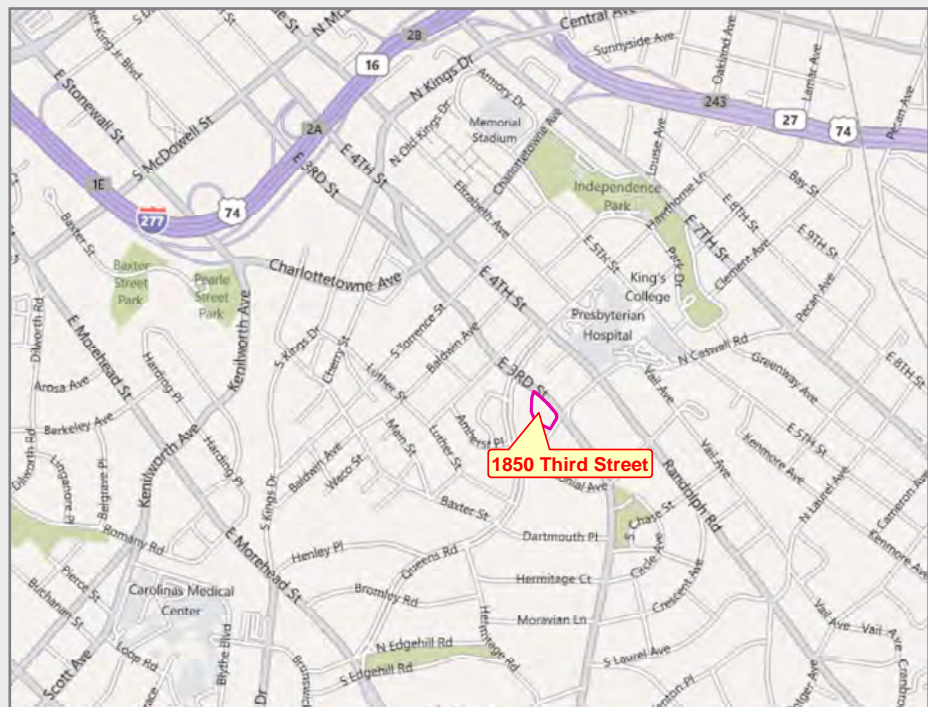
1850 E 3rd Street
Charlotte, NC 28204

**One Suite Remaining
791 RSF**

**\$1,875
per month**

Scott Davies
704-375-1000
sdavies@srenc.com

NAI Southern Real Estate
4201 Congress Street, Suite 170
Charlotte, NC 28209
www.srenc.com



Providence Center

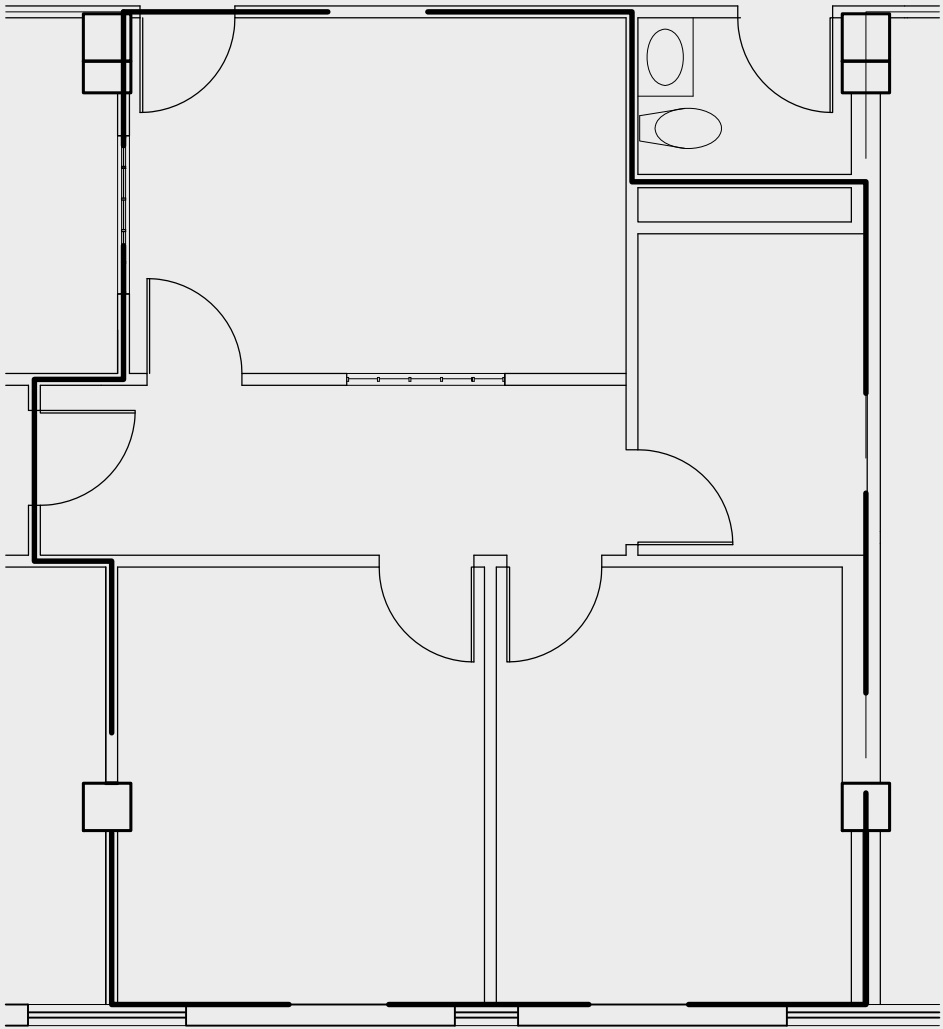
- Reception area, storage / copy room and two private offices.
- Office floor plan ideal for collaborative team space, modular work stations, meeting room etc.
- Located in the heart of the Midtown Medical District next to Novant Health Presbyterian Medical Center, Atrium Mercy Hospital and numerous independent medical practices and services.
- Automated building entry system for after hours access.
- Ample parking.
- Ideal for boutique firms.
- Contact Scott Davies for more details: sdavies@srenc.com.

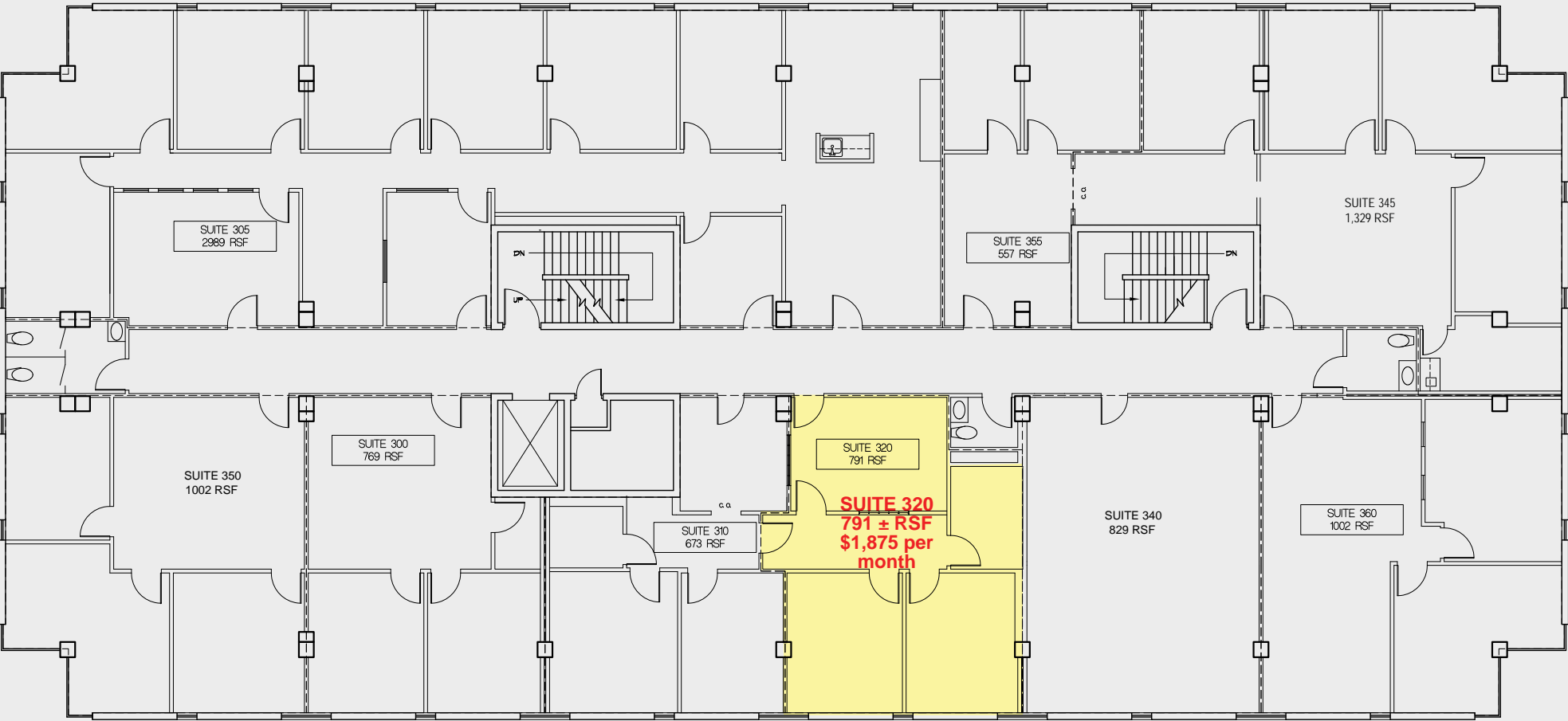


NAI Southern Real Estate-Charlotte, NC. We obtained the information above from sources we believe to be reliable. However, we have not verified its accuracy and make no guarantee, warranty, or representation about it. It is submitted subject to the possibility of errors, omissions, change of price, rental or other conditions, prior sale, lease, or financing, or withdrawal without notice. We include projections, opinions, assumptions or estimates for example only, and they may not represent current or future performance of the property. Compensation is offered to buyer/tenant agents only. Subagency and compensation are not offered to principals, their affiliates or subsidiaries.

105584

SUITE 320
791 ± RSF
\$1,875 per
month





Third Floor

**Providence Center
Office Space**

Scott Davies
Senior Vice President
Corporate Services
sdavies@srenc.com

NAI Southern Real Estate
4201 Congress Street, Ste 170
Charlotte, NC 28209
704-375-1000
www.srenc.com

