

# LEASE

**STOREFRONT RETAIL**  
**884 PIERCE AVENUE**  
**MACON, BIBB COUNTY, GEORGIA 31204**



## LOCATION OVERVIEW

- Positioned at the high-traffic intersection of Riverside Drive and Pierce Avenue
- 63,000± Average daily vehicles on Interstate 75 @ Pierce Avenue (2024 GDOT)
- Outstanding visibility and accessibility in one of the city's primary retail and business corridors
- Excellent exposure to both local and commuter traffic traveling along Riverside Drive
- Surrounded by restaurants, financial institutions and lodging contributing to a vibrant and active business environment



## PROPERTY OVERVIEW

### Retail Space For Lease

Prime retail opportunity featuring a spacious, open floor plan ideal for a variety of uses.

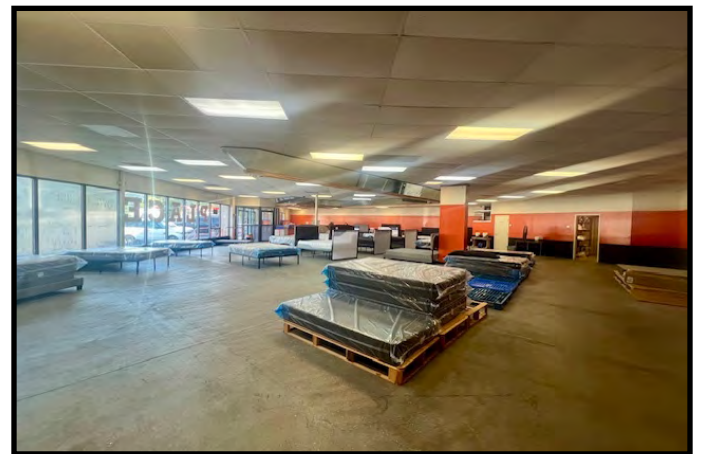
**Size:** 6,178± SF

**Layout:** Wide open retail area with sales counter

**Amenities:** One Private office and two restrooms

### Additional Details:

- Shared parking lot
- Neighboring retailers include Dollar General and Buddy's Home Furnishings
- Prime opportunity for businesses seeking a prominent, high-visibility location with exceptional access and strong market presence
- Public transportation available nearby
- Zoned C-4



**BASE LEASE RATE: \$10.25/PSF,NNN**  
**(CAM T & I: \$1.75/PSF)**  
**\$6,178.00/MONTHLY**

STEPHANIE FOLSOM, CCIM  
478.361.8259 CELL  
STEPHANIE@CBCGEORGIA.COM

990 RIVERSIDE DRIVE • MACON, GA 31201 • 478.746.8171 • CBCMACON.COM

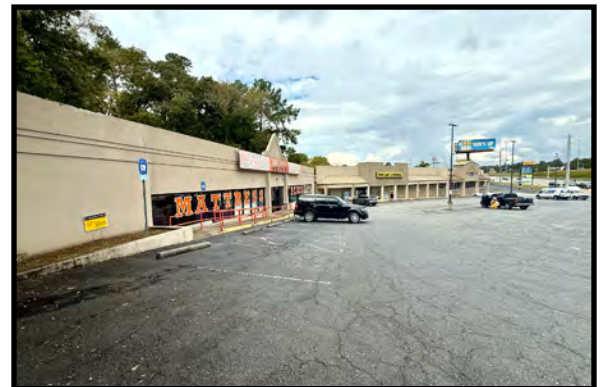
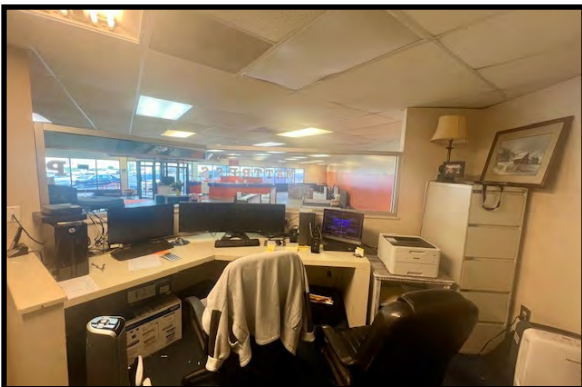
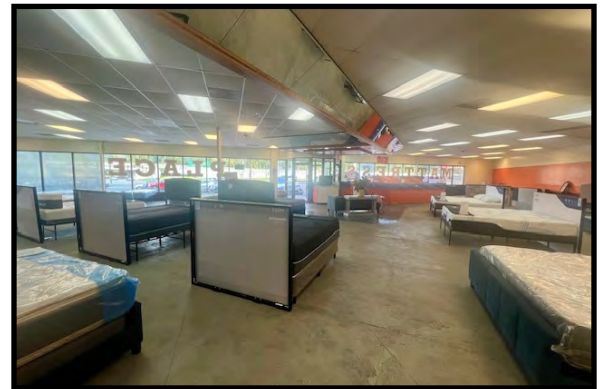
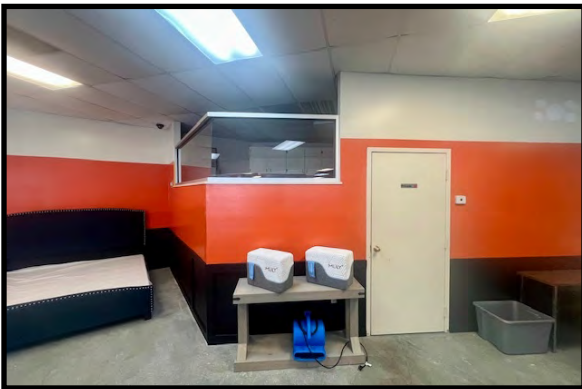
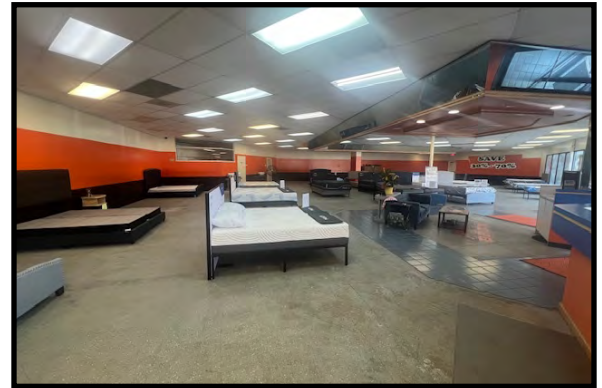
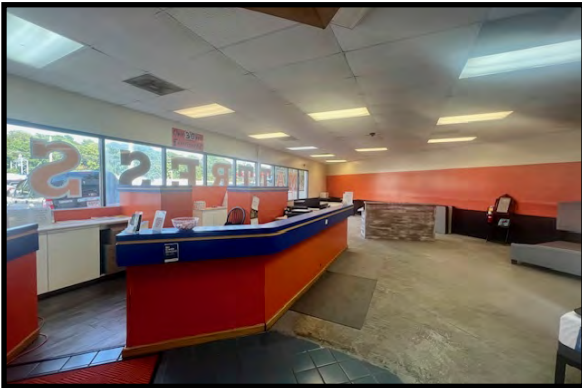


**COLDWELL BANKER**  
**COMMERCIAL**  
EBERHARDT & BARRY

Revised 03/20/26

# LEASE

**STOREFRONT RETAIL**  
**884 PIERCE AVENUE**  
**MACON, BIBB COUNTY, GEORGIA 31204**



**BASE LEASE RATE: \$10.25/PSF,NNN**  
**(CAM T & I: \$1.75/PSF)**  
**\$6,178.00/MONTHLY**

# Here's why we Macon

## Macon is ...

### Rich with music history

Macon has a rich musical heritage, including big names like Little Richard, Otis Redding and the Allman Brothers Band. The former Capricorn Records studio is now Mercer Music at Capricorn, a recording studio, performance venue and museum. Travel & Leisure Magazine featured Macon as having an illustrious musical past and future in their March 2025 issue.

### The Cherry Blossom Capital of the World

Every year, more than 300,000 Yoshino cherry trees bloom in Macon for a few weeks in the spring, and the city celebrates with its annual International Cherry Blossom Festival.

### A Great American Main Street

Macon-Bibb County independent nonprofit NewTown Macon was one of three organizations nationwide to be honored with the 2024 Great American Main Street Award for its downtown revitalization efforts.

### Future home of a new national park

Ocmulgee Mounds National Park and Preserve is on track to become the nation's newest national park, and the first national park in Georgia. The history of the mounds includes more than 12,000 years of continuous human habitation! Time Magazine named Ocmulgee Mounds to their list of the World's Greatest Places of 2025!

### Population

Macon-Bibb County has a population of 156,482. There are more than 900 loft apartments in downtown Macon – and growing!

### Education

Macon is home to Middle Georgia State University, Mercer University, Wesleyan College and Central Georgia Technical College.

### Sports

Macon boasts Rhythm and Rally, the world's largest indoor pickleball court, which plays host to 18 large-scale pickleball tournaments, generating a \$2 million economic impact. The Mercer University Bears also have impressive football and basketball programs, with home games drawing hundreds of visitors.

## F U N F A C T S

### Tourism

Visitors spent \$458.3 million here in 2023. The city is a hub for conventions, the film industry, as well as concerts, with multiple venues including the new Atrium Health Navicent Amphitheater, which seats 8,000 people. Macon has more than 50 restaurants, 26 bars and multiple breweries.

### Business & Industry

More than 6,878 businesses are located here, including Robins Air Force Base, YKK, Kumho Tire, Tyson Foods, Irving, Geico and Georgia Farm Bureau.

### Healthcare

Major hospital systems serving Macon-Bibb County include Piedmont Healthcare and Atrium Health Navicent, which employs hundreds downtown.

# LEASE

**STOREFRONT RETAIL**  
**884 PIERCE AVENUE**  
**MACON, BIBB COUNTY, GEORGIA 31204**



	ONE MILE	THREE MILE	FIVE MILE
<b>2025 HOUSEHOLDS</b>	3,853	40,633	86,443
<b>DAYTIME POPULATION</b>	3,243	47,272	106,874
<b>AVG HOUSEHOLD INCOME</b>	112,156	87,841	83,881

STEPHANIE FOLSOM, CCIM  
 478.361.8259 CELL  
 STEPHANIE@CBCGEORGIA.COM



**COLDWELL BANKER**  
**COMMERCIAL**  
 EBERHARDT & BARRY