

THE SEASONS AT PERK PARK

1814 EAST 12TH ST - SUITE 102

DOWNTOWN CLEVELAND

FOR LEASE

1,015 SF

MARCIE GILMORE
216.706.2287
mgilmore@crminc.us

CRM
COMPANIES

PROPERTY CONTEXT



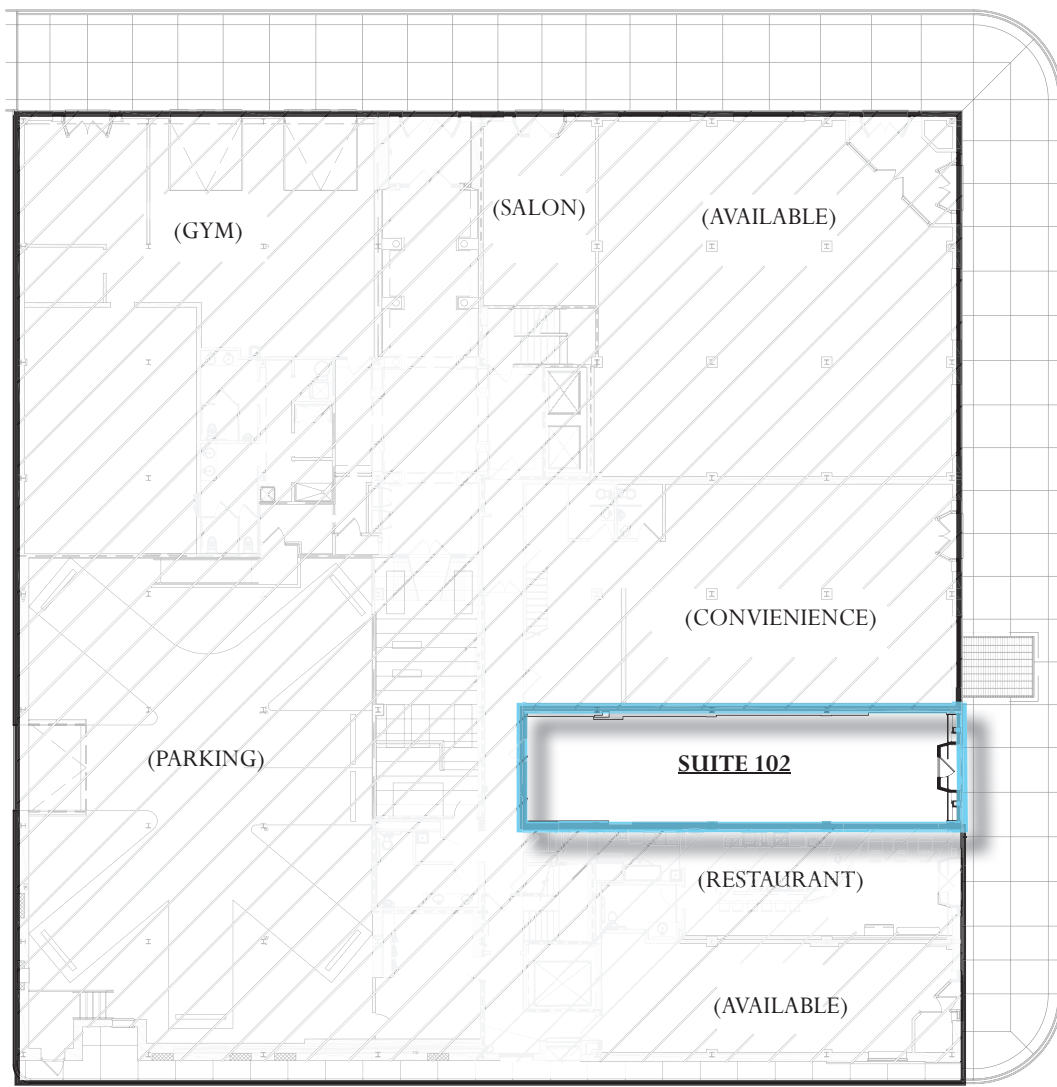
- 2 Ohio Savings Bank
- 4 E 4th Street
- 6 Rocket Mortgage FieldHouse
- 8 Heinen's
- 10 Cuyahoga County Administration
- 12 Playhouse Square
- Mixed-Use Residential
- 1 Perk Park
- 3 PNC Bank
- 5 5th Street Arcade
- 7 Progressive Field
- 9 Metropolitan at the 9
- 11 US Bank
- P Parking

DEMOGRAPHICS

	10-MIN. WALK	1 MILE RADIUS	CITY OF CLEVELAND
POPULATION	29,280	135,000	385,282
AVG. HOUSEHOLD INCOME	\$73,801	\$52,142	\$41,643
TOTAL HOUSEHOLDS	7,439	20,535	211,902
MEDIAN AGE	25-34	25-35	35.8

CHESTER AVENUE

HICKORY COURT



EAST 12TH STREET

HICKORY COURT

MARCIE GILMORE
 216.706.2287
mgilmore@crminc.us



PROPERTY DETAILS



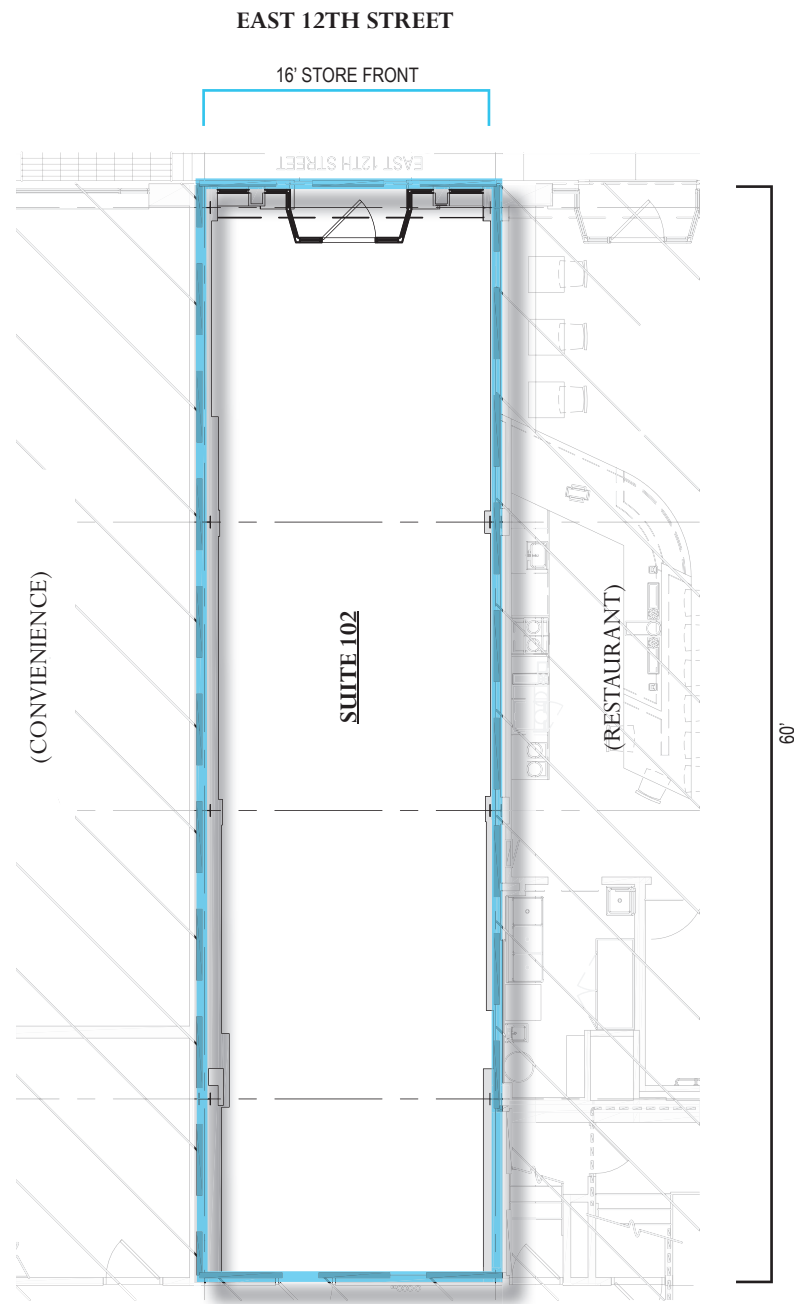
THE SPACE

USE:	RETAIL/RESTAURANT/BUSINESS
STATUS:	IMMEDIATE AVAILABILITY
RATE:	STARTING AT \$17/SF + UTILITIES
FLOOR:	FIRST
AREA:	1,015 SF
CLEAR HT:	15'-9"
CONDITION:	WARM SHELL/BLANK CANVAS
ADDRESS:	1814 EAST 12TH ST CLEVELAND, OH 44114

THE BUILDING

1924 HISTORICAL 4-STORY, 70,305 SF MIXED-USE BUILDING WITH LUXURY APARTMENTS ABOVE IN-LINE STOREFRONT.

MARCIE GILMORE
216.706.2287
mgilmore@crminc.us





EXISTING CONDITIONS

1. PERK PARK
2. SUITE 102 ENTRY
3. INTERIOR LOOKING EAST
4. INTERIOR LOOKING WEST

MARCIE GILMORE
216.706.2287
mgilmore@crminc.us

