

Breaking Ground Summer 2025!



Two Buildings for Sale or Lease Prime Medical Space in St. George

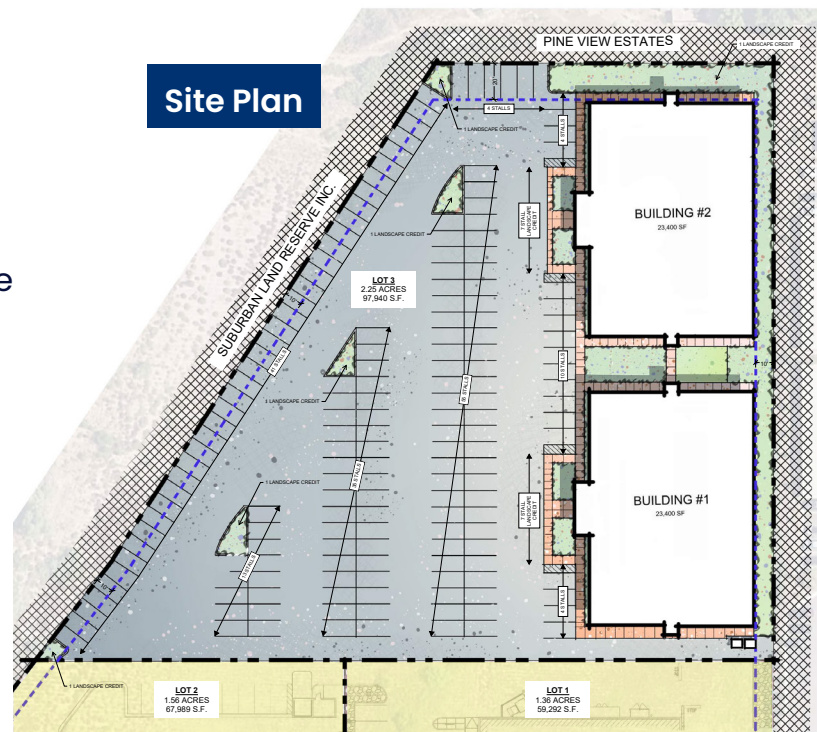
2780 Mall Drive | St. George, Utah 84790

Available: 40,000 SF total
(each building ~20,000 SF)

Asking: \$29.00 NNN

Parking: 4.5/1,000 SF

- + Generous Tenant Improvement Allowance
- + Monument & Building Signage Available
- + Prime Location in Washington Fields Area of St. George
- + Adjacent to New Revere Health Hospital and within close proximity to Regional Airport
- + Ownership Opportunities Available



CONTACT

Rick Peterson

801 792 7425

rick@fortstreetpartners.com



**FORT STREET
PARTNERS**



DEMOGRAPHICS

	2 MILE	5 MILE	10 MILES
Population			
2024	31,914	107,261	173,942
2029 Projected	39,721	133,903	217,473
Projected Annual Growth 2024-2029	4.9%	5.0%	5.0%
Households			
2024	10,640	36,241	60,361
2029 Projected	13,338	45,518	75,900
Projected Annual Growth 2024-2029	5.1%	5.1%	5.1%

CONTACT

Rick Peterson

801 792 7425

rick@fortstreetpartners.com



FORT STREET
PARTNERS