

For Lease

±6,000 SF

590 E 16th Street #C
Los Angeles, CA 90015



For more information, please contact:

Daniel Park

(213) 446-0396

Danielpark777@hotmail.com

DRE# 01227056



Park Industrial Realty
800 McGarry St, 5th Floor
Los Angeles, CA 90021
Corporation DRE# 01983713

Property Information

590 E 16th St, #C, Los Angeles, CA 90015

Available SF: 6,000 SF

Office SF: 1,000 SF

Offices: 3

Year Built: 1985

Clear Height: 14 feet

Parking: To be determined

Loading: 1 GL

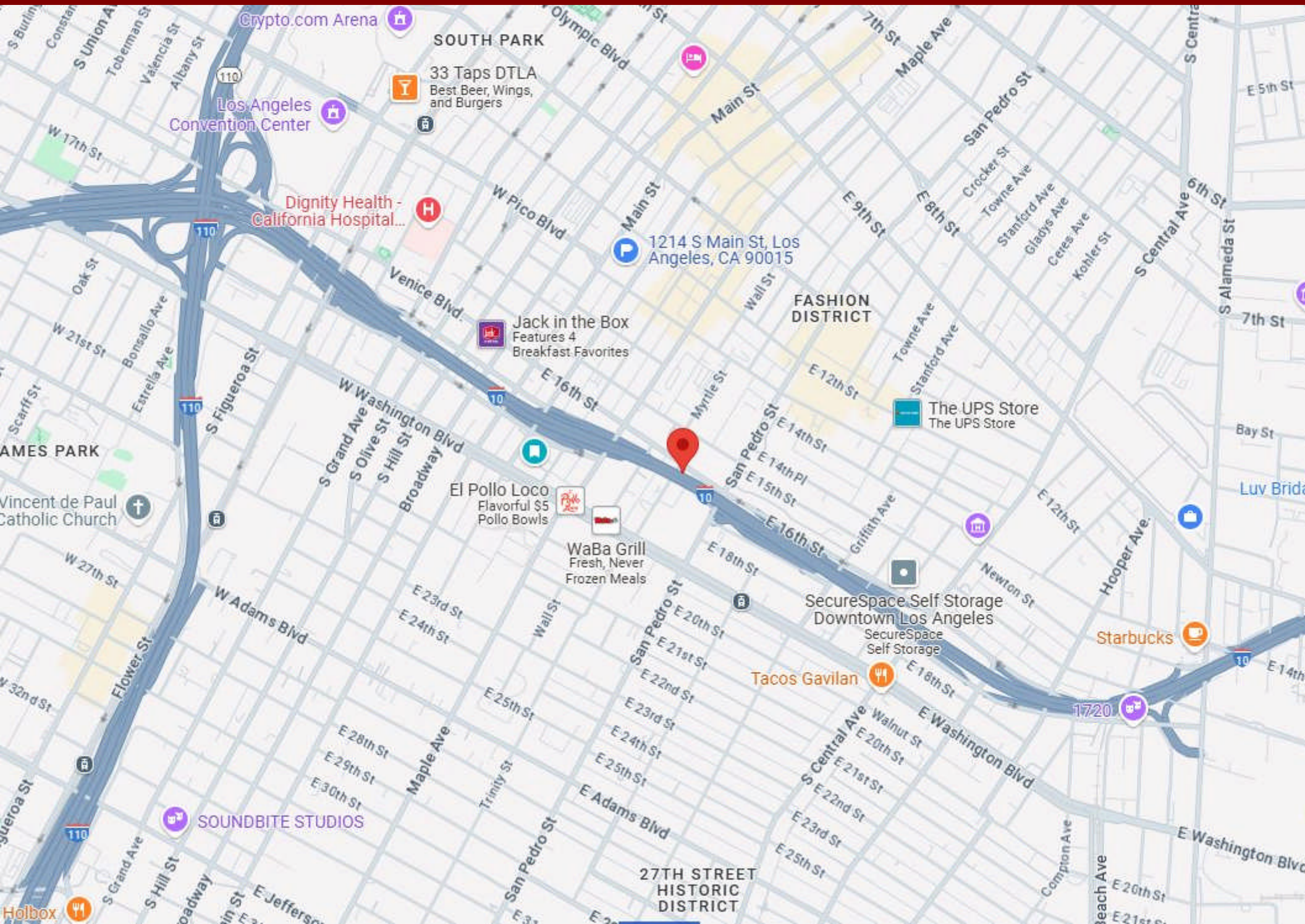
Zoning: M2

Lease Rate: \$6,300 (\$1.05/SF) gross

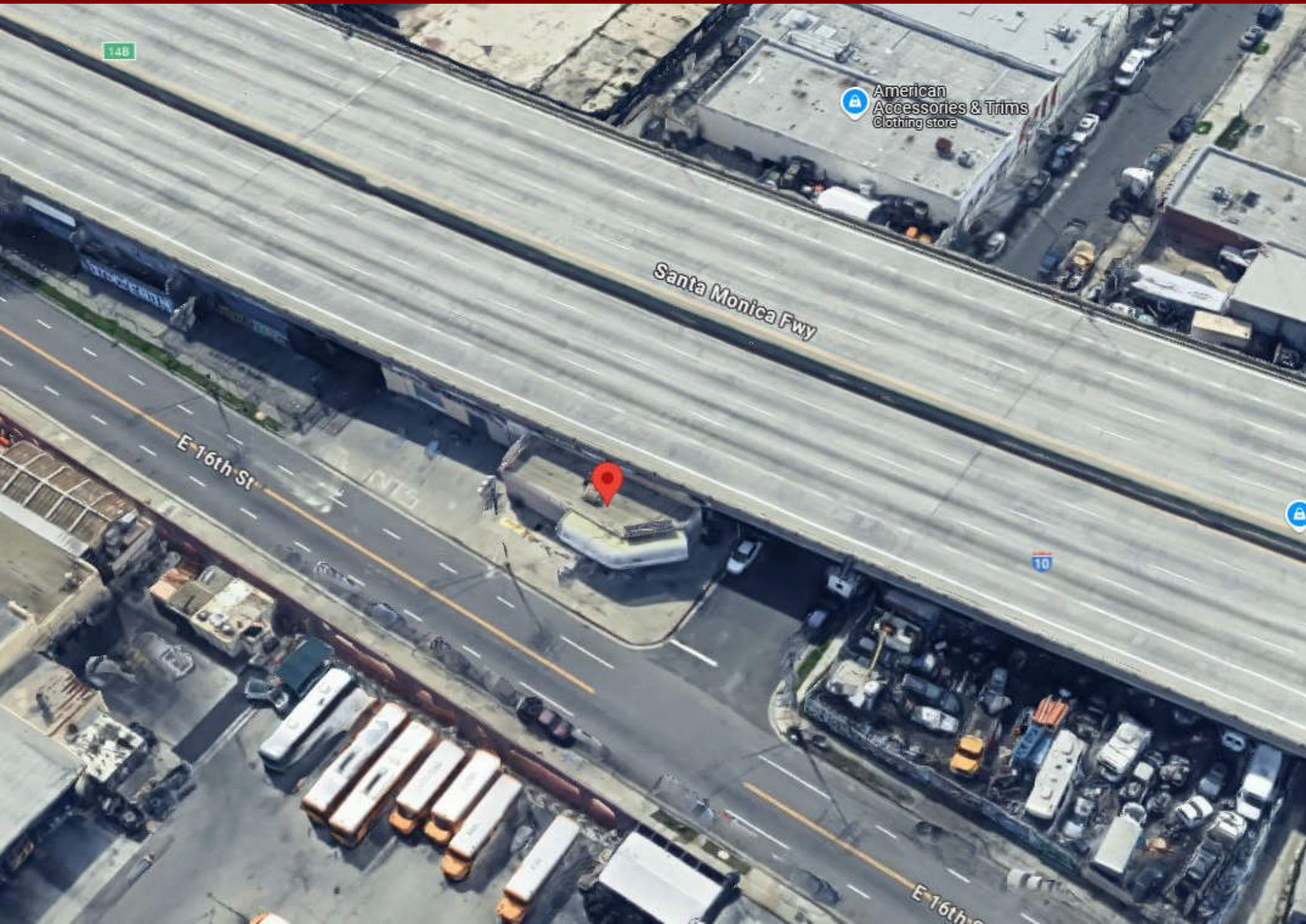
- Excellent Downtown LA location
- Great for storage
- 14 feet high ceiling
- Ground level loading
- Very secure under the 10 freeway
- In the heart of Fashion District

All information has been furnished from sources which we deem reliable, but for which we assume no liability. All measurements are approximate. Broker/Owner do not warrant its accuracy. Buyer/Lessee must verify all information.

Area Map



Aerial Photo



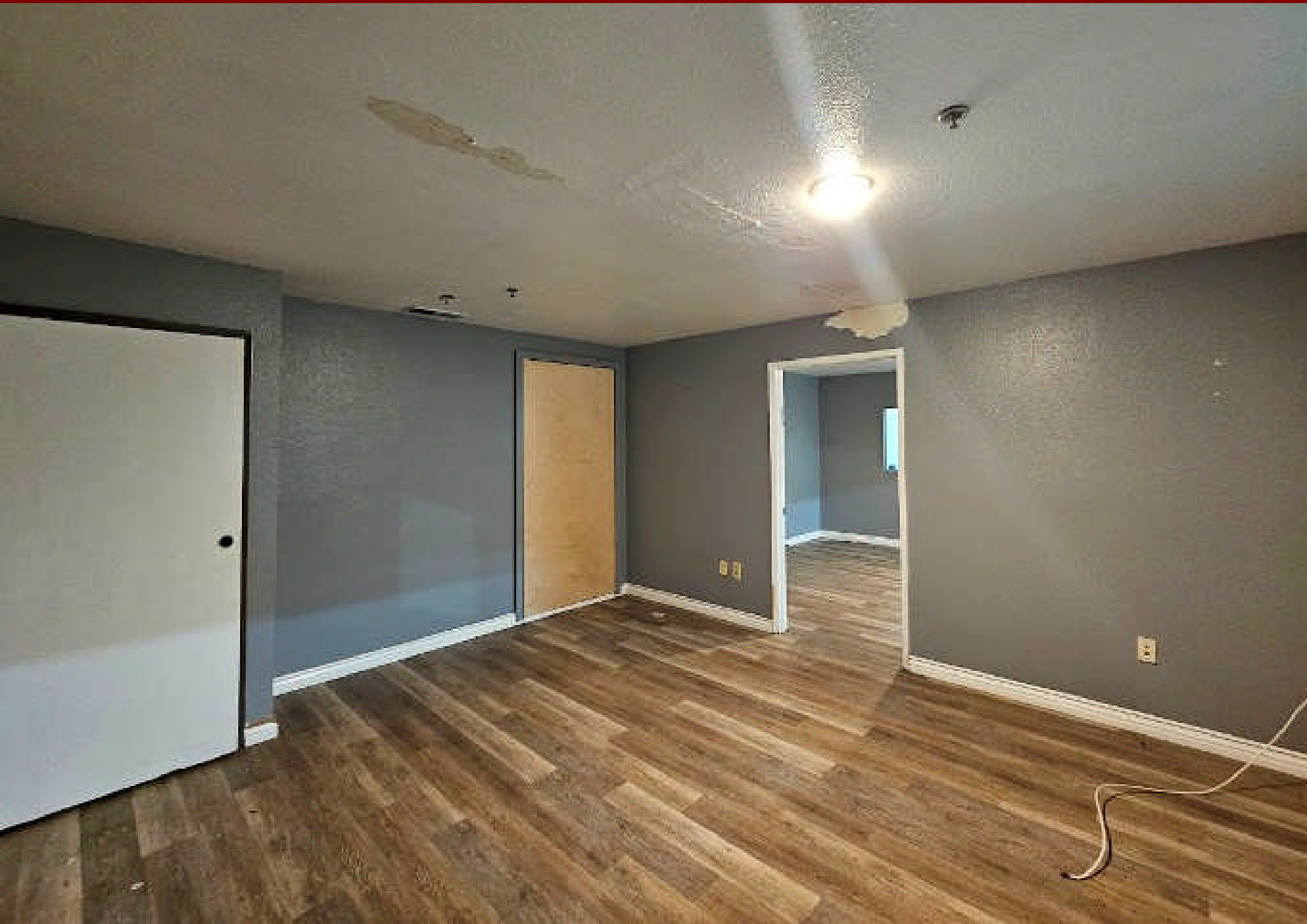
Property Photo



Property Photo



Property Photo



Property Photo

