



FIRST TIME ON MARKET

2185 Main Road

Newfield, New Jersey

Property Description

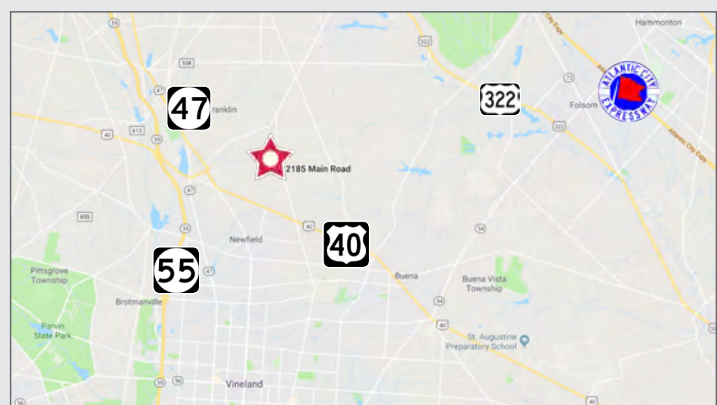
- 5,000± SF free standing office building
 - 1st Floor: 3,500± SF
 - 2nd Floor: 1,500± SF
- Expandable to 15,000± SF
- Constructed in 2011
- Central alarm
- High efficiency lighting
- Propane gas and electric
- Private well and septic
- 36 parking spaces
- Pylon and exterior building signage
- ADA accessible

Lease Rate

\$12.00 PSF NNN

Location Description

- Just off Route 40
- Close proximity to Routes 47 and 55
- Easy access to Atlantic City Expressway
- Only 15 minutes to the heart of Vineland



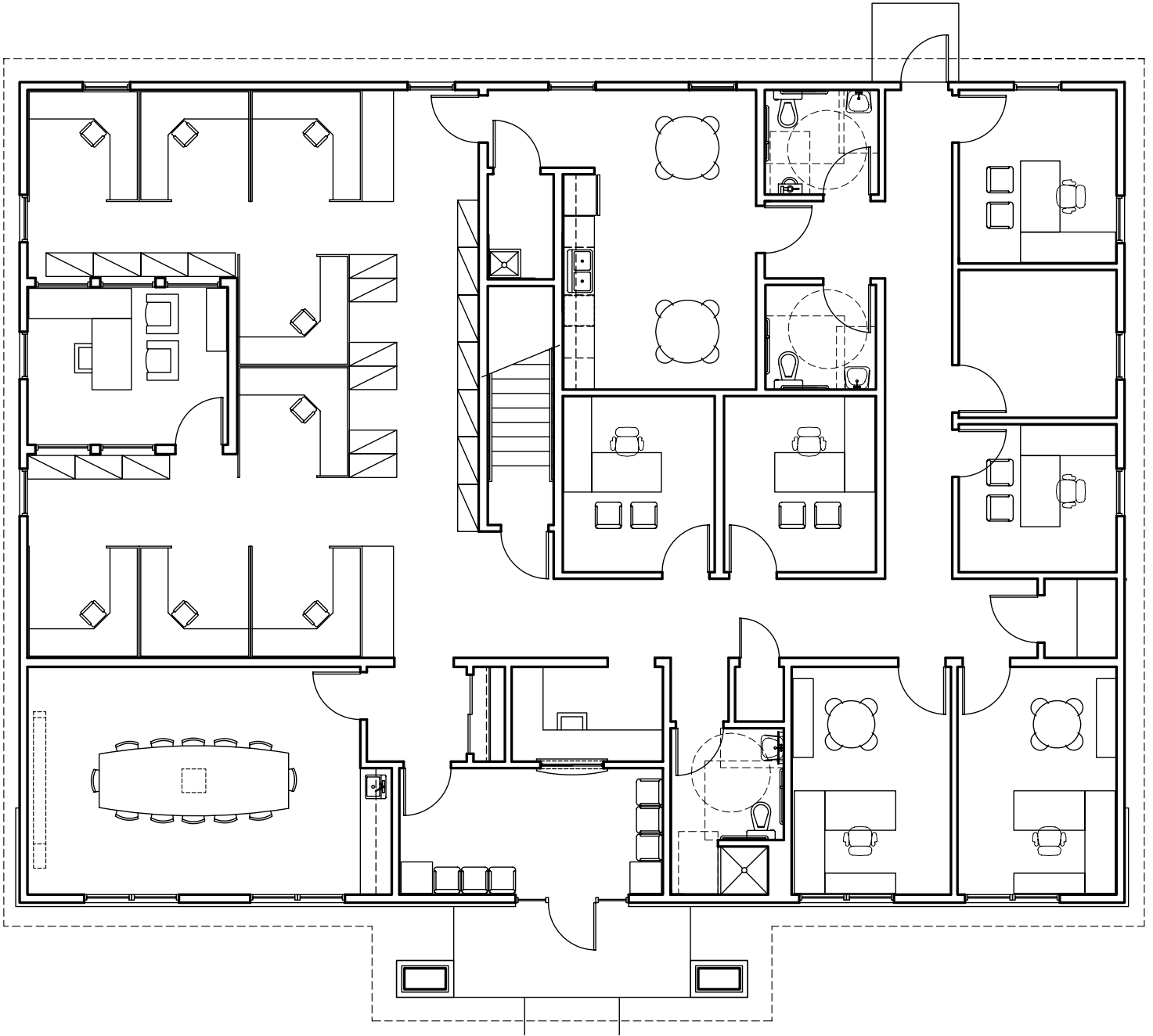
For more information:

Rebecca Ting, SIOR

+1 856 234 9600 • rebecca.ting@naimertz.com

Julie Kronfeld, SIOR

+1 856 802 6516 • julie.kronfeld@naimertz.com



NO WARRANTY OR REPRESENTATION, EXPRESS OR IMPLIED, IS MADE AS TO THE ACCURACY OF THE INFORMATION CONTAINED HEREIN, AND THE SAME IS SUBMITTED SUBJECT TO ERRORS, OMISSIONS, CHANGE OF PRICE, RENTAL OR OTHER CONDITIONS, PRIOR SALE, LEASE OR FINANCING, OR WITHDRAWAL WITHOUT NOTICE, AND OF ANY SPECIAL LISTING CONDITIONS IMPOSED BY OUR PRINCIPALS NO WARRANTIES OR REPRESENTATIONS ARE MADE AS TO THE CONDITION OF THE PROPERTY OR ANY HAZARDS CONTAINED THEREIN ARE ANY TO BE IMPLIED.

21 Roland Avenue
Mount Laurel, NJ 08054
+1 856 234 9600

naimertz.com