

# FOR SALE INDUSTRIAL SITE

6291 IH-37 ACCESS ROAD | MATHIS, TX 78368



## PROPERTY DESCRIPTION

This property offers on-site office trailers. Main building with 18 ft. clear height and 24 ft. center. Nine (9) bay vehicle maintenance shop with 24 ft. clear height and 36 ft. center. Large stabilized truck yard. Located approximately 25 miles NW of Corpus Christi on I-37.

## PROPERTY HIGHLIGHTS

- 70,000 SF
- 47.359 Acres
- 9 Bays

## OFFERING SUMMARY

Sale Price:	\$4,000,000
Lot Size:	47.359 Acres
Building Size:	70,000 SF

DEMOGRAPHICS	1 MILE	10 MILES	30 MILES
Total Households	277	4,391	43,399
Total Population	818	12,357	138,821
Average HH Income	\$35,733	\$45,522	\$56,626

MARK ADAME, CCIM, SIOR  
mark@joeadame.com  
O: 361.880.5888  
C: 361.813.7245

# FOR SALE INDUSTRIAL SITE

**ADAME**  
COMMERCIAL  
REAL ESTATE SOLUTIONS

6291 IH-37 ACCESS ROAD | MATHIS, TX 78368



MARK ADAME, CCIM, SIOR  
mark@joeadame.com  
O: 361.880.5888  
C: 361.813.7245

JOEADAME.COM

The information contained herein has been obtained from sources we deem reliable. We have no reason to doubt its accuracy, but we do not guarantee it.

# FOR SALE INDUSTRIAL SITE

**ADAME**  
COMMERCIAL  
REAL ESTATE SOLUTIONS

6291 IH-37 ACCESS ROAD | MATHIS, TX 78368



MARK ADAME, CCIM, SIOR  
mark@joeadame.com  
O: 361.880.5888  
C: 361.813.7245

JOEADAME.COM

The information contained herein has been obtained from sources we deem reliable. We have no reason to doubt its accuracy, but we do not guarantee it.

**FOR SALE INDUSTRIAL SITE**

**ADAME**  
COMMERCIAL  
REAL ESTATE SOLUTIONS

6291 IH-37 ACCESS ROAD | MATHIS, TX 78368



MARK ADAME, CCIM, SIOR  
mark@joeadame.com  
O: 361.880.5888  
C: 361.813.7245

JOEADAME.COM

The information contained herein has been obtained from sources we deem reliable. We have no reason to doubt its accuracy, but we do not guarantee it.

FOR SALE INDUSTRIAL SITE

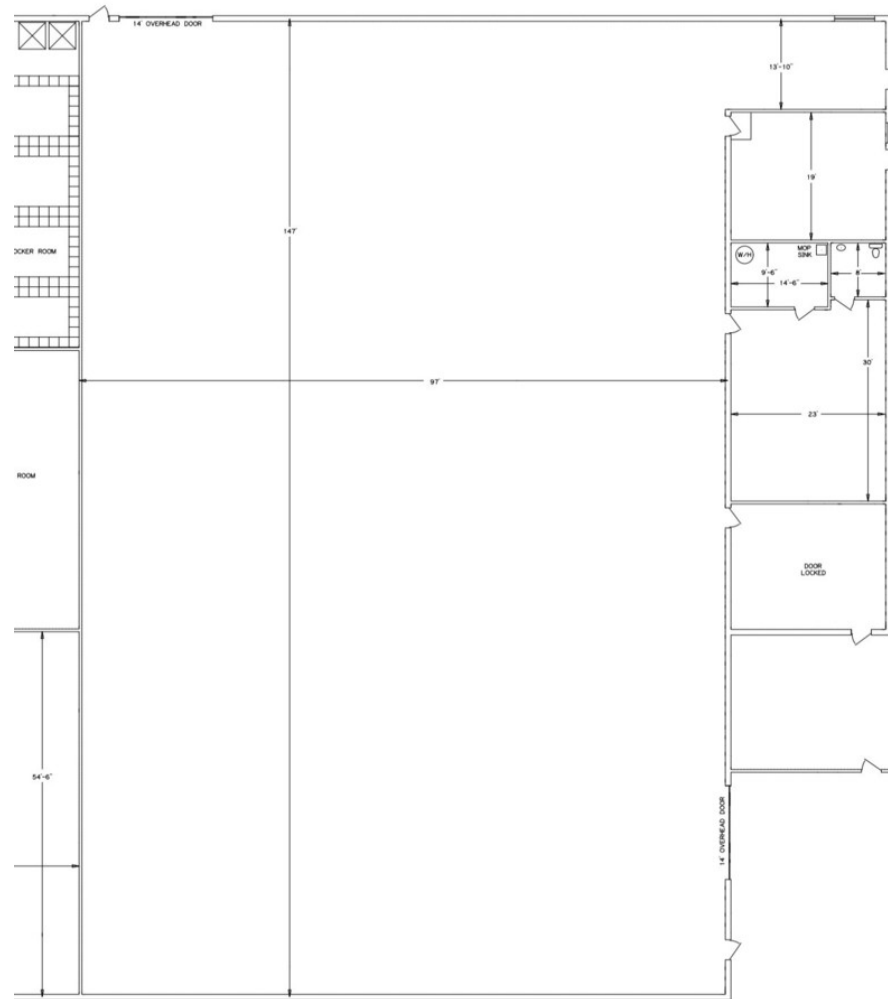
6291 IH-37 ACCESS ROAD | MATHIS, TX 78368



MARK ADAME, CCIM, SIOR  
mark@joeadame.com  
O: 361.880.5888  
C: 361.813.7245

# FOR SALE INDUSTRIAL SITE

6291 IH-37 ACCESS ROAD | MATHIS, TX 78368



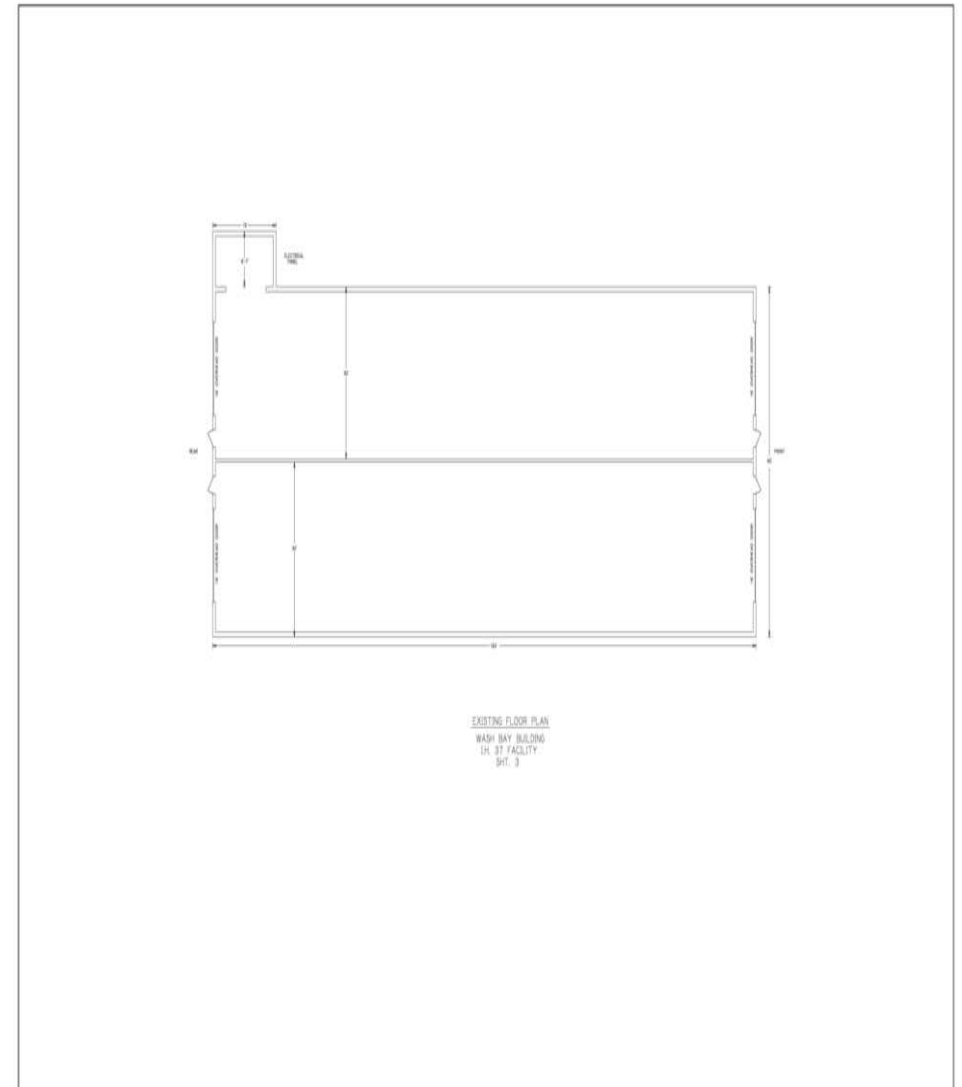
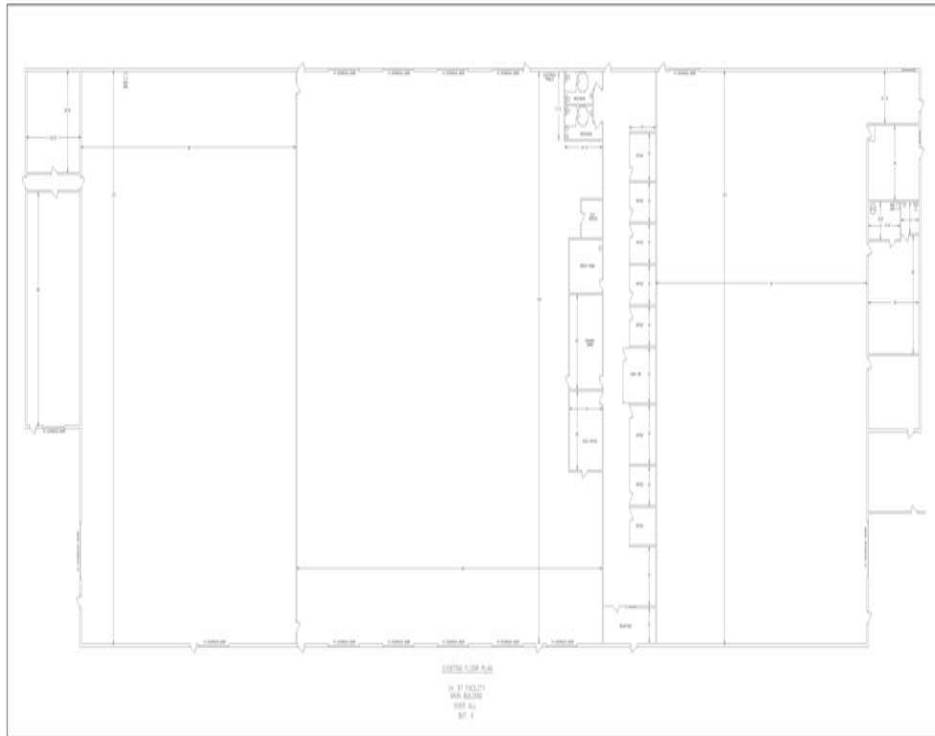
EXISTING FLOOR PLAN

MARK ADAME, CCIM, SIOR  
mark@joeadame.com  
O: 361.880.5888  
C: 361.813.7245

# FOR SALE INDUSTRIAL SITE

**ADAME**  
COMMERCIAL  
REAL ESTATE SOLUTIONS

6291 IH-37 ACCESS ROAD | MATHIS, TX 78368



MARK ADAME, CCIM, SIOR  
mark@joeadame.com  
O: 361.880.5888  
C: 361.813.7245

JOEADAME.COM

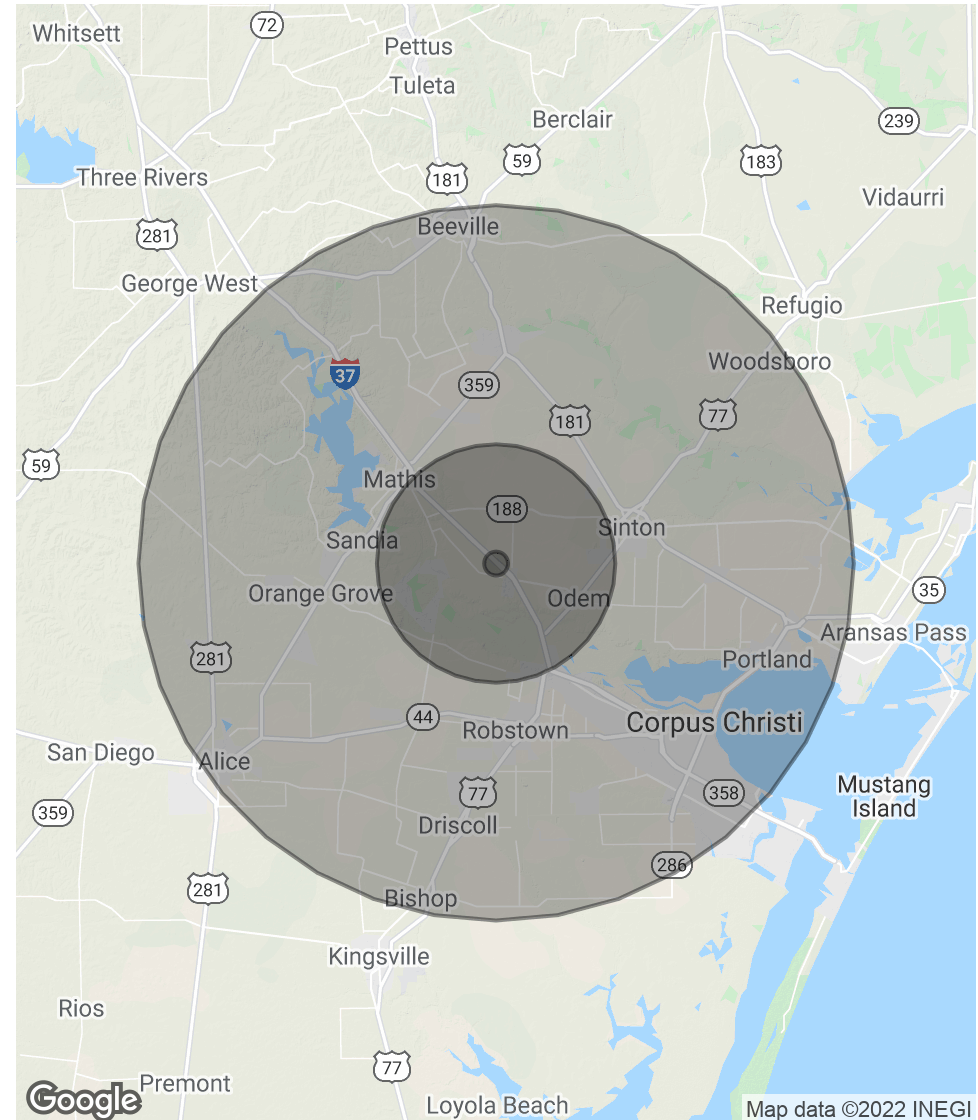
The information contained herein has been obtained from sources we deem reliable. We have no reason to doubt its accuracy, but we do not guarantee it.

# FOR SALE INDUSTRIAL SITE

6291 IH-37 ACCESS ROAD | MATHIS, TX 78368

POPULATION	1 MILE	10 MILES	30 MILES
Total Population	818	12,357	138,821
Average age	33.3	38.5	35.7
Average age (Male)	31.4	37.0	34.7
Average age (Female)	34.6	39.5	36.6
HOUSEHOLDS & INCOME	1 MILE	10 MILES	30 MILES
Total households	277	4,391	43,399
# of persons per HH	3.0	2.8	3.2
Average HH income	\$35,733	\$45,522	\$56,626
Average house value	\$50,343	\$93,408	\$107,568

\* Demographic data derived from 2010 US Census



MARK ADAME, CCIM, SIOR  
mark@joeadame.com  
O: 361.880.5888  
C: 361.813.7245





## Information About Brokerage Services

*Texas law requires all real estate licensees to give the following information about brokerage services to prospective buyers, tenants, sellers and landlords.*

### TYPES OF REAL ESTATE LICENSE HOLDERS:

- # A **BROKER** is responsible for all brokerage activities, including acts performed by sales agents sponsored by the broker.
- # A **SALES AGENT** must be sponsored by a broker and works with clients on behalf of the broker.

### A BROKER'S MINIMUM DUTIES REQUIRED BY LAW (A client is the person or party that the broker represents):

- # Put the interests of the client above all others, including the broker's own interests;
- # Inform the client of any material information about the property or transaction received by the broker;
- # Answer the client's questions and present any offer to or counter-offer from the client; and
- # Treat all parties to a real estate transaction honestly and fairly.

### A LICENSE HOLDER CAN REPRESENT A PARTY IN A REAL ESTATE TRANSACTION:

**AS AGENT FOR OWNER (SELLER/LANDLORD):** The broker becomes the property owner's agent through an agreement with the owner, usually in a written listing to sell or property management agreement. An owner's agent must perform the broker's minimum duties above and must inform the owner of any material information about the property or transaction known by the agent, including information disclosed to the agent or subagent by the buyer or buyer's agent.

**AS AGENT FOR BUYER/TENANT:** The broker becomes the buyer/tenant's agent by agreeing to represent the buyer, usually through a written representation agreement. A buyer's agent must perform the broker's minimum duties above and must inform the buyer of any material information about the property or transaction known by the agent, including information disclosed to the agent by the seller or seller's agent.

**AS AGENT FOR BOTH - INTERMEDIARY:** To act as an intermediary between the parties the broker must first obtain the written agreement of each party to the transaction. The written agreement must state who will pay the broker and, in conspicuous bold or underlined print, set forth the broker's obligations as an intermediary. A broker who acts as an intermediary:

- # Must treat all parties to the transaction impartially and fairly;
- # May, with the parties' written consent, appoint a different license holder associated with the broker to each party (owner and buyer) to communicate with, provide opinions and advice to, and carry out the instructions of each party to the transaction.
- # Must not, unless specifically authorized in writing to do so by the party, disclose:
  - o that the owner will accept a price less than the written asking price;
  - o that the buyer/tenant will pay a price greater than the price submitted in a written offer; and
  - o any coincidental information or any other information that a party specifically instructs the broker in writing not to disclose, unless required to do so by law.

**AS SUBAGENT:** A license holder acts as a subagent when aiding a buyer in a transaction without an agreement to represent the buyer. A subagent can assist the buyer but does not represent the buyer and must place the interests of the owner first.

### TO AVOID DISPUTES, ALL AGREEMENTS BETWEEN YOU AND A BROKER SHOULD BE IN WRITING AND CLEARLY ESTABLISH:

- # The broker's duties and responsibilities to you, and your obligations under the representation agreement.
- # Who will pay the broker for services provided to you, when payment will be made and how the payment will be calculated.

**LICENSE HOLDER CONTACT INFORMATION:** This notice is being provided for information purposes. It does not create an obligation for you to use the broker's services. Please acknowledge receipt of this notice below and retain a copy for your records.

<b>Joe Adame &amp; Associates, Inc.</b>	<b>416864</b>	<b>joe@joeadame.com</b>	<b>(361)880-5888</b>
Licensed Broker /Broker Firm Name or Primary Assumed Business Name	License No.	Email	Phone
Mark Adame, CCIM, SIOR	480169	mark@joeadame.com	361.880.5888
Designated Broker of Firm	License No.	Email	Phone
Licensed Supervisor of Sales Agent/ Associate	License No.	Email	Phone
Sales Agent/Associate's Name	License No.	Email	Phone

Buyer/Tenant/Seller/Landlord Initials

Date

Regulated by the Texas Real Estate Commission

Information available at [www.trec.texas.gov](http://www.trec.texas.gov)  
IABS 1-0