

REDUCED PRICE - DOWNTOWN OKC INDUSTRIAL

1919 S Santa Fe, Oklahoma City, OK 73109



OFFERING SUMMARY

Sale Price:	\$655,000
Lease Rate:	\$3,950.00 per month (MG)
Building Size:	6,200 SF
Lot Size:	0.5 Acres
Year Built/Renovated:	1979/2025
Zoning:	I-2 (Moderate Industrial)
Market:	Oklahoma City
Submarket:	Downtown

PROPERTY OVERVIEW

This newly renovated warehouse is located just south of downtown with easy access to Shields Boulevard, I-40 and I-35. It is equipped with a new metal roof, a new air conditioned office, restroom, LED lighting, and is fully insulated with metal lining. To the north of the building, there is a one-third acre gravel yard with a gate and a new security fence. There are two overhead doors (14' and 12'). One of them is in the front elevation with newly paved concrete, while the other provides access to the fenced yard.

PROPERTY HIGHLIGHTS

- New metal roof
- Secure gravel yard with gate
- Fully insulated with metal lining
- LED lighting
- New air conditioned office and restroom
- Two overhead doors (14'/12')
- 250 amp electrical panel, 3-phase



Adept Commercial Real Estate, LLC
1 NE 2nd Street, Suite 101
Oklahoma City, OK 73104

Andrew Hwang, Esq
734.223.6284
andrew@adeptcre.com

ADDITIONAL PHOTOS

REDUCED PRICE - DOWNTOWN OKC INDUSTRIAL

1919 S Santa Fe, Oklahoma City, OK 73109

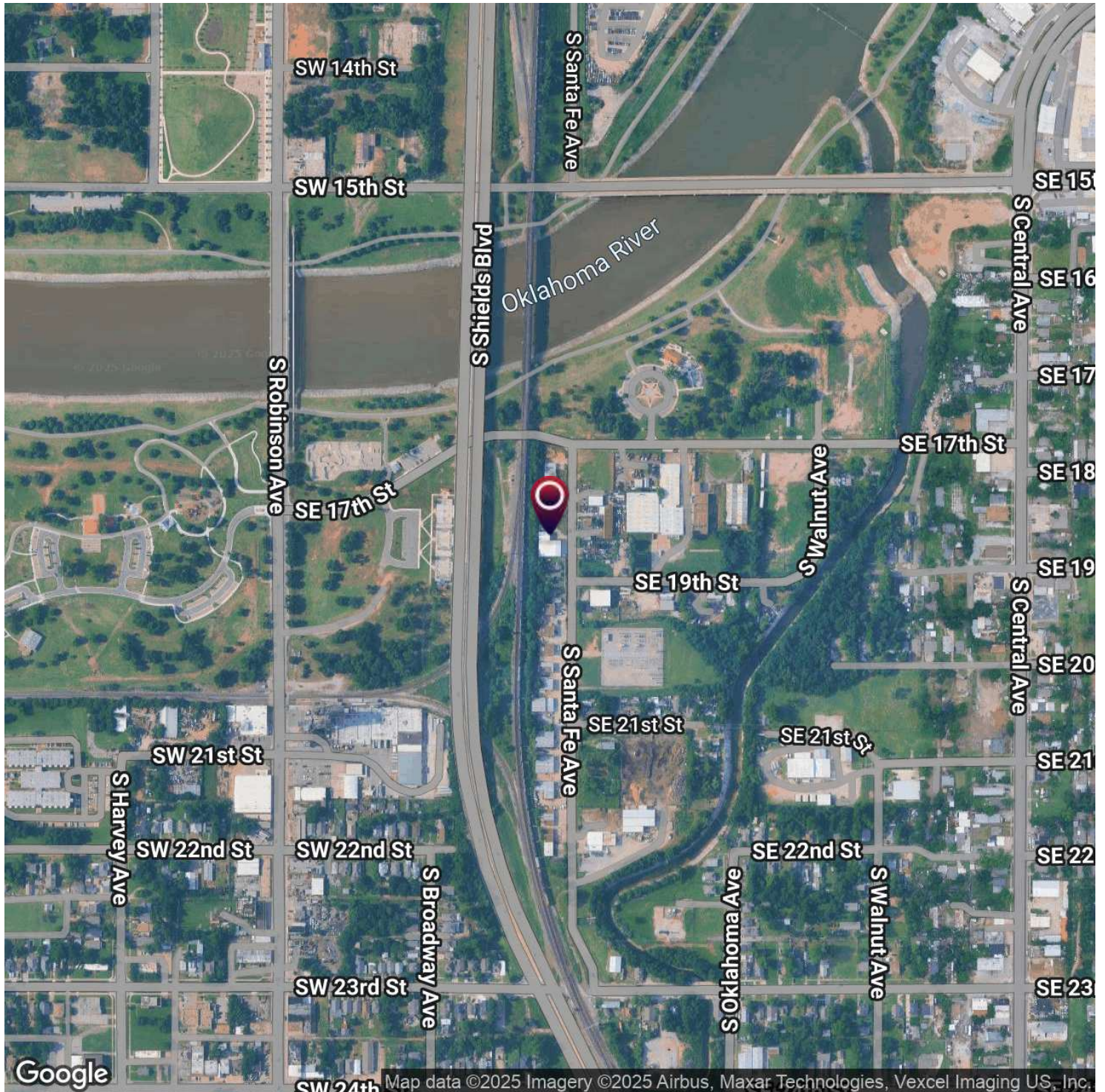


Adept Commercial Real Estate, LLC
1 NE 2nd Street, Suite 101
Oklahoma City, OK 73104

Andrew Hwang, Esq
734.223.6284
andrew@adeptcre.com

REDUCED PRICE - DOWNTOWN OKC INDUSTRIAL

1919 S Santa Fe, Oklahoma City, OK 73109



Adept Commercial Real Estate, LLC
1 NE 2nd Street, Suite 101
Oklahoma City, OK 73104

Andrew Hwang, Esq
734.223.6284
andrew@adeptcre.com