

# FOR SUBLEASE

2624 LORD BALTIMORE DRIVE

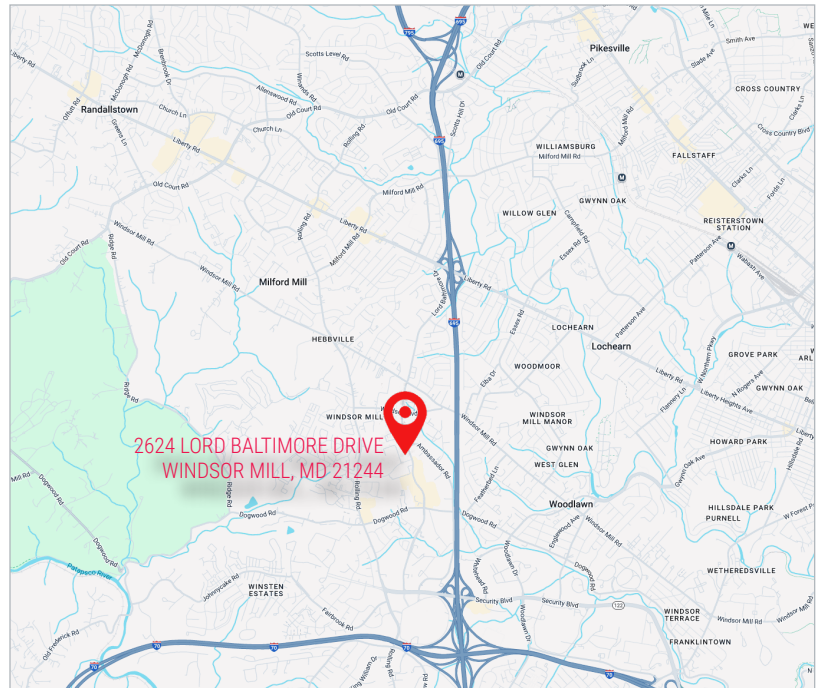
Windsor Mill, MD 21244

NEWMARK



## PROPERTY INFORMATION

|                |               |
|----------------|---------------|
| Total SF:      | 31,080        |
| Availability:  | 12,000        |
| Clear Height:  | 16'           |
| Loading Docks: | 5             |
| Truck Court:   | 130' (shared) |
| Zoning:        | ML-IM         |



## PROPERTY HIGHLIGHTS

- Immediate access to I-695 and I-70

**One East Pratt Street, Suite 805 Baltimore, MD 21202**

The information contained herein has been obtained from sources deemed reliable, but has not been verified and no guarantee, warranty or representation, either express or implied, is made with respect to such information. Terms of sale or lease and availability are subject to change or withdrawal without notice.

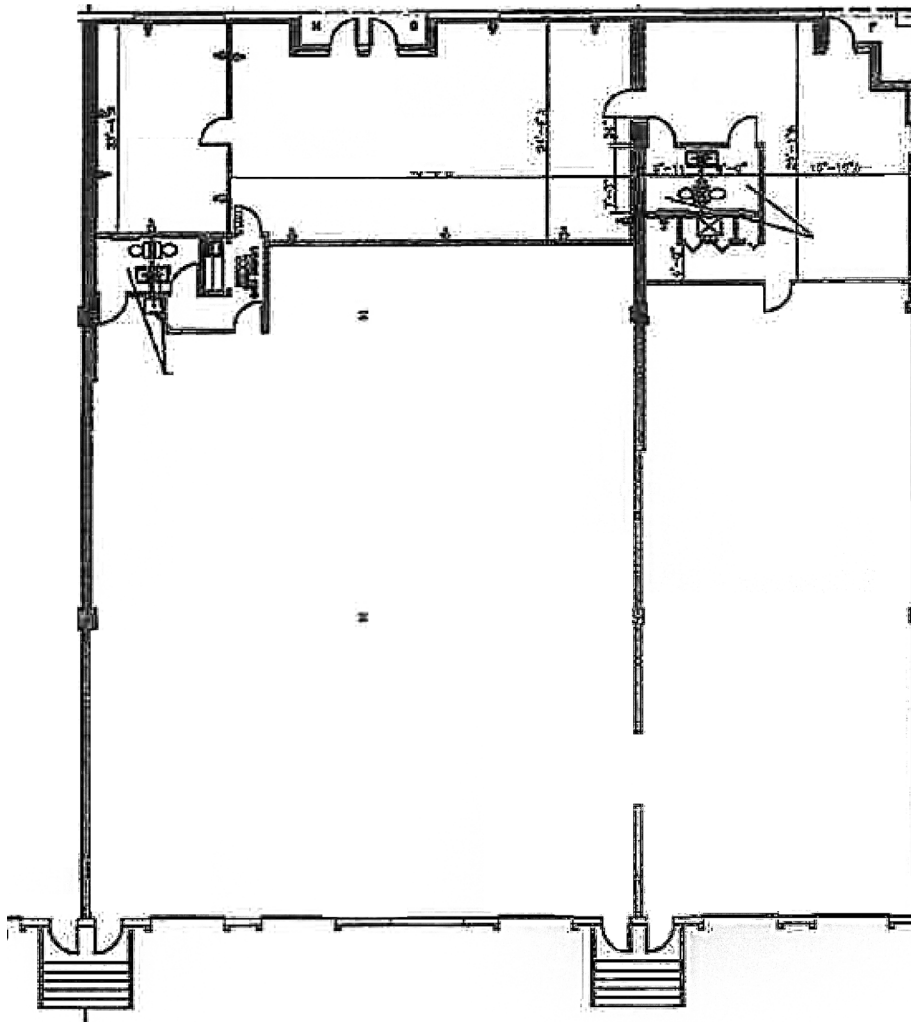
# FOR SUBLEASE

NEWMARK

2624 LORD BALTIMORE DRIVE

Windsor Mill, MD 21244

AVAILABLE **12,000 SF**



## FOR **LEASING INFORMATION:**

Brian Kruger  
*Senior Managing Director*  
410.625.4211  
brian.kruger@nmrk.com

Thomas Hinder  
*Director*  
t 410.844.4010  
thomas.hinder@nmrk.com

Erik Evans  
*Associate Director*  
410.844.4003  
erik.evans@nmrk.com

**One East Pratt Street, Suite 805 Baltimore, MD 21202**

The information contained herein has been obtained from sources deemed reliable, but has not been verified and no guarantee, warranty or representation, either express or implied, is made with respect to such information. Terms of sale or lease and availability are subject to change or withdrawal without notice.

[nmrk.com](http://nmrk.com)