

PINEWOOD AT THE GROVE
1001 NAVAHO DRIVE
Raleigh, NC 27609



SUITE 204B, OPTION C | APPROX. 4,053 RSF

PROPERTY FEATURES

- \$23.00/SF FS lease.
- ~4:1000 parking ratio.
- On-Site maintenance.
- Highly desirable location at the epicenter of two major developments (over \$1B each):
 - The Exchange
 - North Hills Innovation District
- Convenient location
 - 0.2 miles from Duke Raleigh Hospital
 - 0.3 miles from I-440 highway
 - 0.5 miles from Midtown East
 - 1.2 miles from North Hills Shopping Center



SUITE FEATURES

- Fully renovated space: new flooring & paint, LED light fixtures, & reworked suite layouts.
- Thirteen windowed perimeter offices.
- Two break areas & private individual use restroom.
- Two conference rooms, reception area, storage closet, & open work areas.



CONTACT US TODAY

ROSIE DANIEL
Rosie@HobbsProperties.com

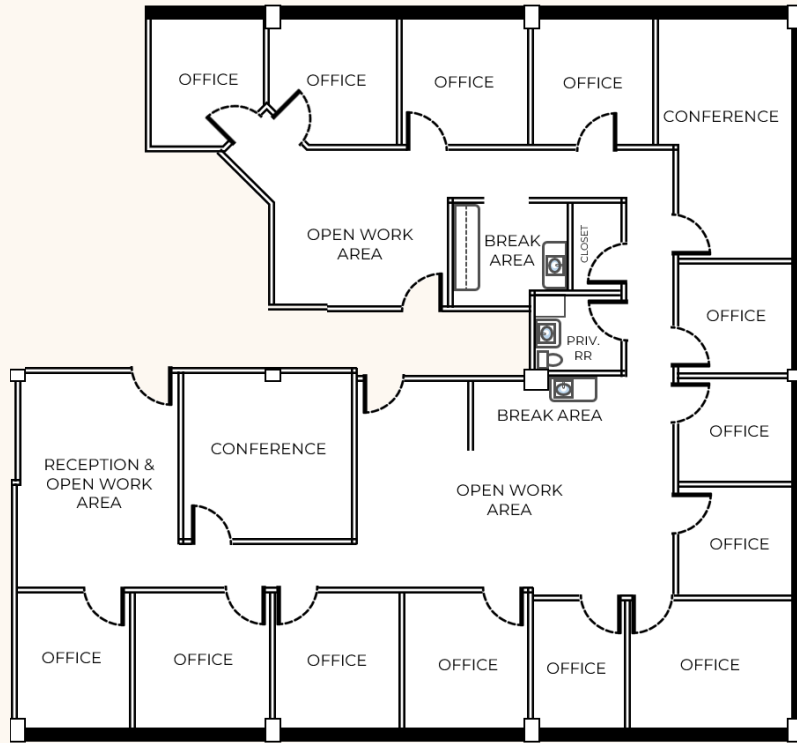
O 919-828-9999
C 919-696-6719

VISIT US AT
Hobbsproperties.com

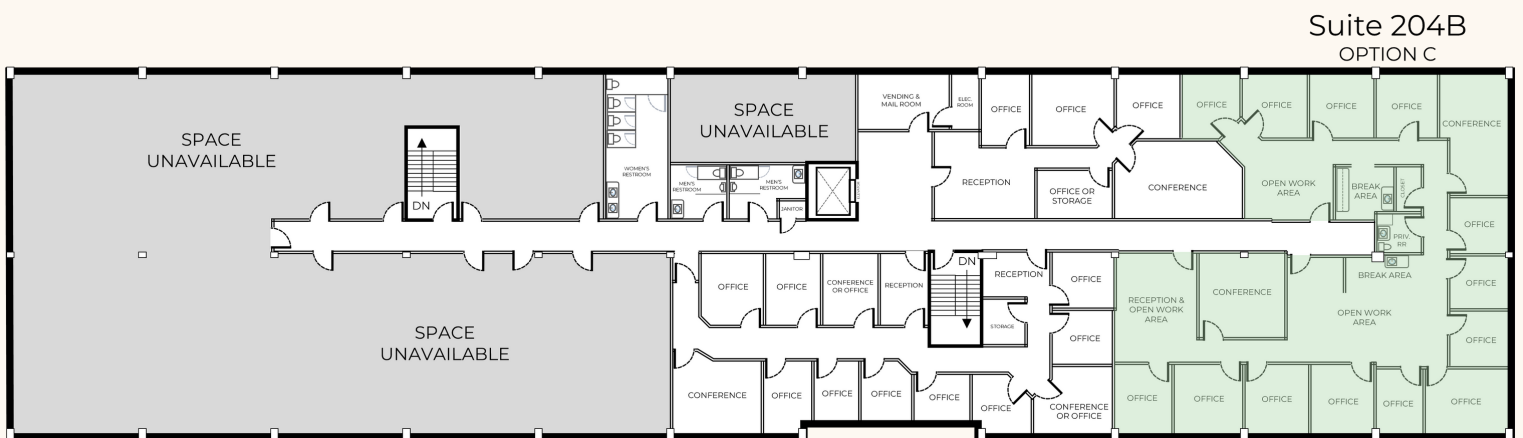


FLOORPLANS

SUITE OUTLINE



FLOOR PLATE



CONTACT US TODAY

ROSIE DANIEL
Rosie@HobbsProperties.com

O 919-828-9999
C 919-696-6719

VISIT US AT
Hobbsproperties.com

