

Canyon Rim Plaza

2917 East 3300 South, Salt Lake City, Utah

Office
Retail
Industrial
Land
Investment
Residential



PROPERTY INFORMATION

Unit 2917 Available 3/1/26
1,143 SF \$32/NNN
Quick Freeway Access to I-215
Bus Shelter
Well Maintained Center
Good Visibility and Frontage
Over 25,000 Cars Passing Daily
Traffic Controlled Access

Demographics	1 Mile	3 Mile	5 Mile
2025 Population	19,170	160,555	347,313
2025 Households	8,336	68,407	147,808
2025 AVG HH Income	\$134,046	\$137,393	\$125,630
2025 Businesses	906	8,461	19,613
2025 Daytime Population	7,186	71,588	225,315



ARROW REAL ESTATE

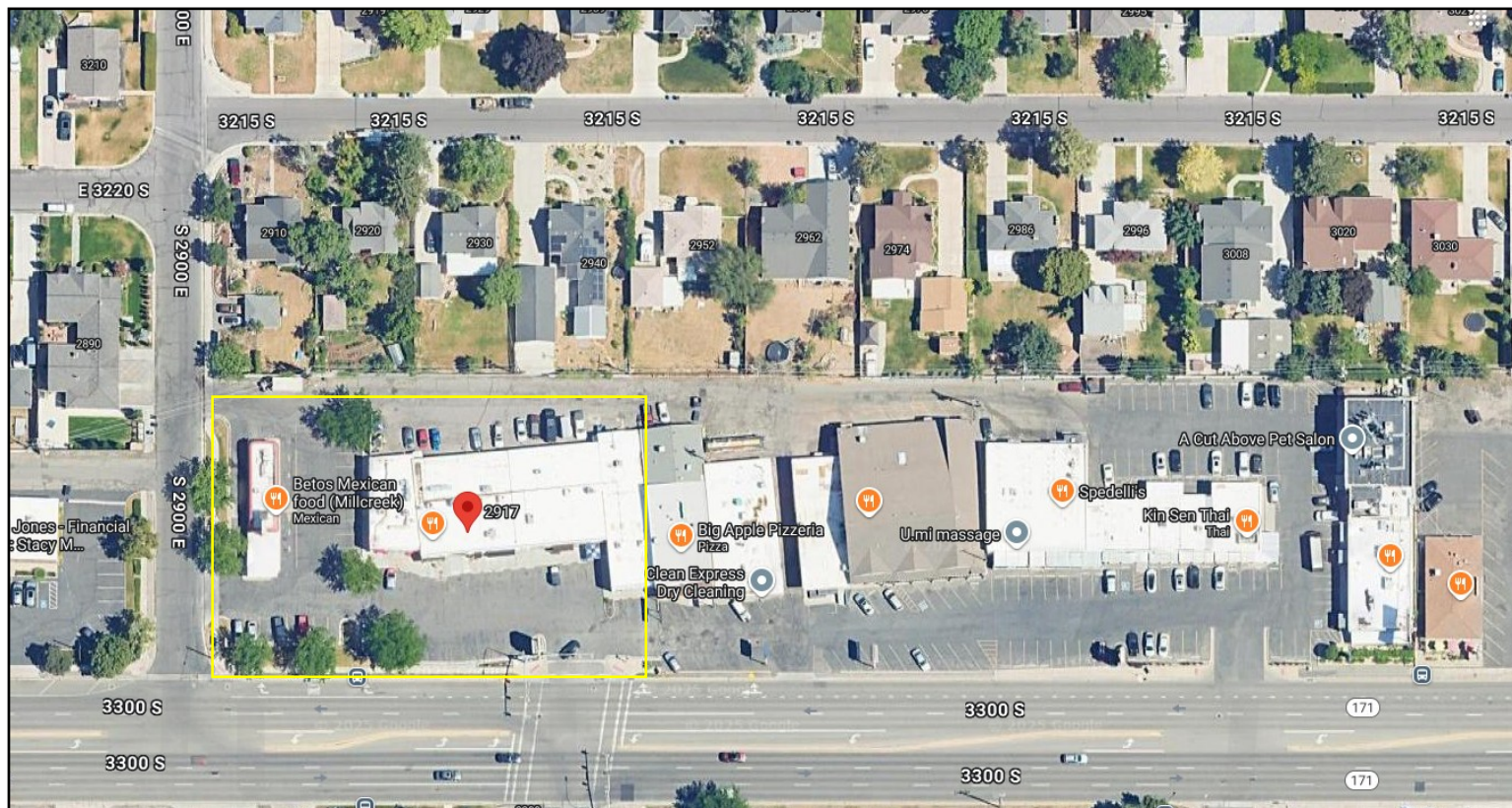
635 West 5300 South Suite 300 • Murray, Utah 84123
OFFICE: 801-486-3399

For More Information Contact:

Lori Kennedy
(801) 573-9014
lori@arrowutah.com

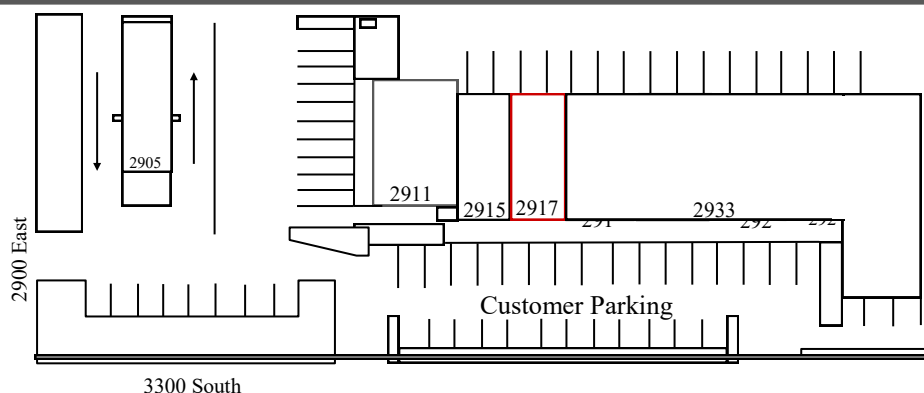
Elaine Crossley
(801) 486-3399
elaine@arrowutah.com

All negotiations related to the purchase, renting or leasing of the property described above shall be conducted through Arrow Real Estate Services, Inc. No warranty or representation, express or implied is made as to the accuracy of the information contained above. This information may contain errors, omissions, price changes or encumbrances. Terms may change or be withdrawn without notice. Other special listing conditions may be imposed by the seller/landlord. Prospective buyers/tenants should conduct their own due diligence. Subject to credit approval. Certain restrictions apply.



Tenant Directory

2905-Betos
2911-Domino's Pizza
2915-Cupbop
2917-Available 3/1/26
2933-L9 Sports



635 West 5300 South Suite 300 • Murray, Utah 84123
OFFICE: 801-486-3399

For More Information Contact:

Lori Kennedy
(801) 573-9014
lori@arrowutah.com

Elaine Crossley
(801) 486-3399
elaine@arrowutah.com

All negotiations related to the purchase, renting or leasing of the property described above shall be conducted through Arrow Real Estate Services, Inc. No warranty or representation, express or implied is made as to the accuracy of the information contained above. This information may contain errors, omissions, price changes or encumbrances. Terms may change or be withdrawn without notice. Other special listing conditions may be imposed by the seller/landlord. Prospective buyers/tenants should conduct their own due diligence. Subject to credit approval. Certain restrictions apply.