

FORMER RITE AID AVAILABLE!

155 N MAIN ST, RITTMAN, OHIO 44270



FOR LEASE
11,342 SF | 1.02 AC

Kevin Moss
First Vice President
216 363 6453
kevin.moss@cbre.com

CBRE, Inc.
950 Main Ave, Suite 200
Cleveland, Ohio 44113
www.cbre.us

CBRE

THE OPPORTUNITY

- Freestanding 11,342 SF former Rite Aid available for lease on 1.02 AC
- The site is located at main/main in the heart of Rittman at a signalized intersection with 10k+ VPD
- Neighboring tenants include IGA, Burger King, Dollar Tree, Dollar General and more!
- The market has an average household income of \$98,872 in a 10 minute drive time
- The market is conveniently positioned in close proximity to Medina, Wadsworth and Akron regional trade areas
- Zoned C2 Central Business District



QUICK STATS - 20 MINUTE DRIVE RADIUS



DAYTIME
POPULATION
122,952



POPULATION
141,627



HOUSEHOLDS
57,017

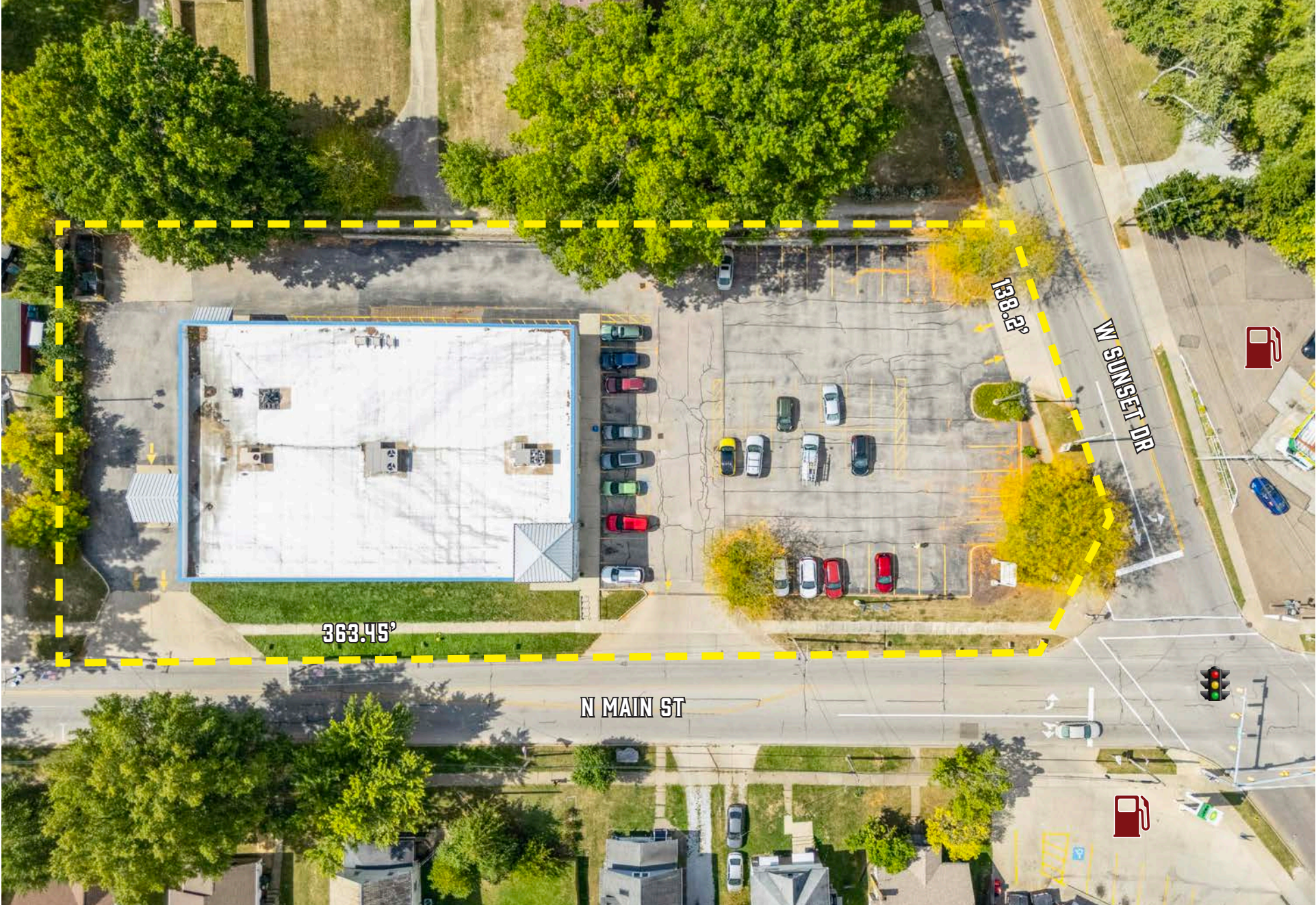


POPULATION
25 & OVER
99,737



AVG. HOUSEHOLD
INCOME
\$102,500

DIMENSIONS



363.45'

139.2'

N MAIN ST

N SUNSET DR

AERIAL VIEW



AERIAL VIEW



DEMOGRAPHICS

	10 MIN	20 MIN	30 MIN
2024 Population - Current Year Estimate	21,302	141,627	511,868
2024 Daytime Population	18,202	122,952	538,833
2024 Households - Current Year Estimate	8,550	57,017	213,113
2024 Average Household Income	\$98,872	\$102,500	\$93,669
2029 Average Household Income Projection	\$113,079	\$118,519	\$108,816
2024 Median Household Income	\$75,613	\$77,400	\$67,248
2024 Population Over 25	14,843	99,737	358,678

CONTACT US

Kevin Moss

First Vice President
216 363 6453
kevin.moss@cbre.com

CBRE, Inc.

950 Main Ave, Suite 200
Cleveland, Ohio 44113
www.cbre.us

© 2024 CBRE, Inc. All rights reserved. This information has been obtained from sources believed reliable, but has not been verified for accuracy or completeness. You should conduct a careful, independent investigation of the property and verify all information. Any reliance on this information is solely at your own risk. CBRE and the CBRE logo are service marks of CBRE, Inc. All other marks displayed on this document are the property of their respective owners, and the use of such logos does not imply any affiliation with or endorsement of CBRE. Photos herein are the property of their respective owners. Use of these images without the express written consent of the owner is prohibited. Licensed Real Estate Broker.

CBRE