

## Specifications

±4.5 Acres  
LOT SIZE

SD3  
ZONING

Block 6017.11, Lot 8  
BLOCK & LOT

\$8,795.09 (2024)  
TAXES

Ideal for Truck / Trailer Parking and  
Outdoor Storage  
IDEAL USE

Current 8' Fence Permit  
Leased with Month-to-Month Tenants  
Potential Train Access  
Expired Plans for a Waste Transfer  
Station  
NOTES

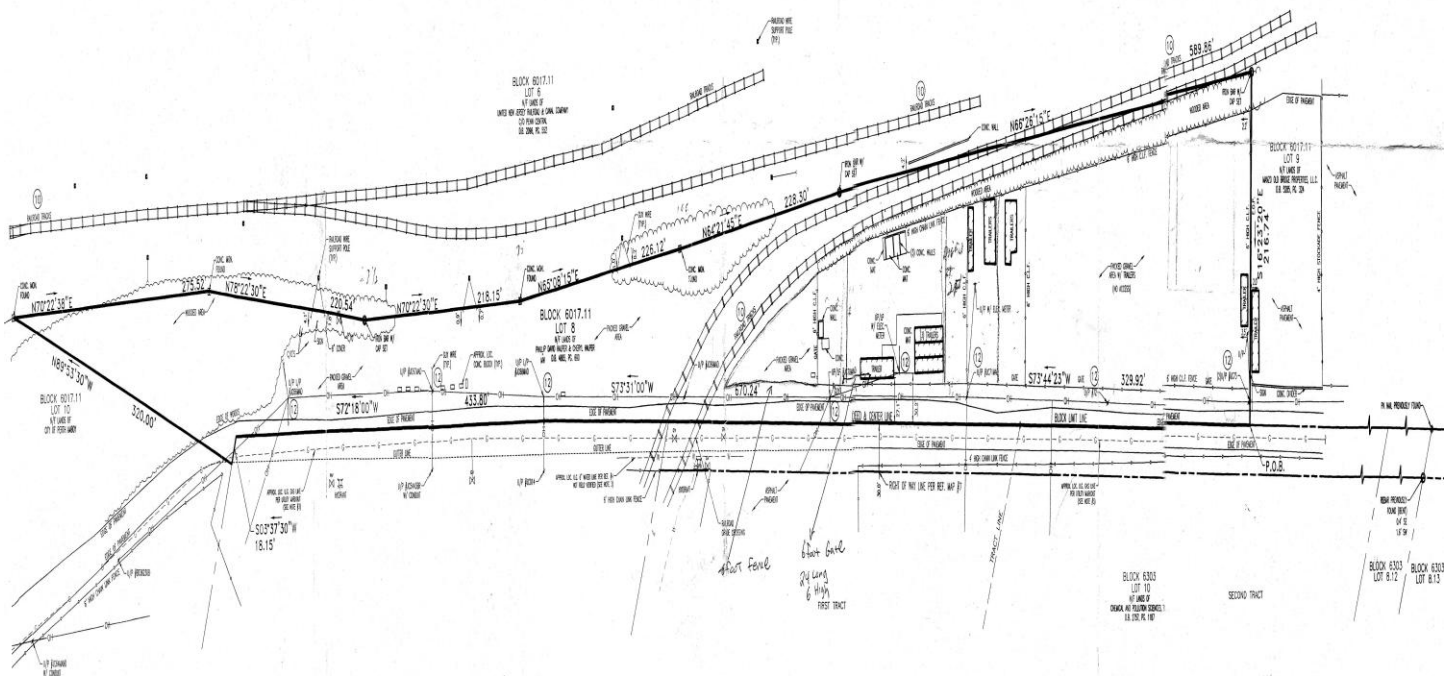
2.9 Miles to Route 9  
3.2 Miles to Garden State Pkwy Exit 123  
ACCESSIBILITY

For additional property information or to arrange an inspection,  
please contact the exclusive brokers:

John Longo  
Senior Director  
973.379.6644 x 129  
JLongo@blauberg.com

Pat Clancy  
Associate  
973.379.6644 x 238  
PClancy@blauberg.com

**555 Water Works Road  
Survey**



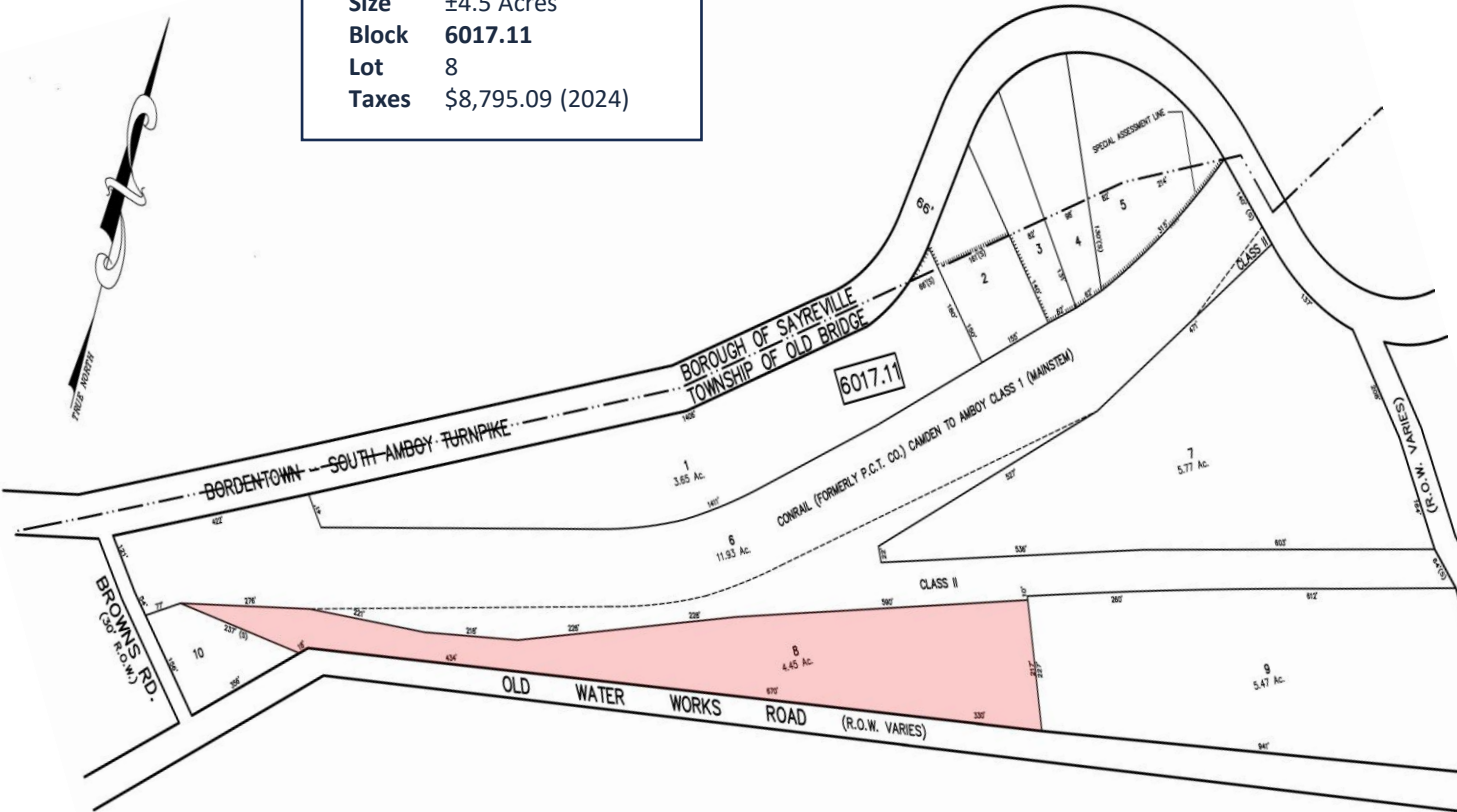
For additional property information or to arrange an inspection,  
please contact the exclusive brokers:

John Longo  
Senior Director  
973.379.6644 x 129  
JLongo@blauberg.com

Pat Clancy  
Associate  
973.379.6644 x 238  
PClancy@blauberg.com

555 Water Works Road

Size ±4.5 Acres  
Block 6017.11  
Lot 8  
Taxes \$8,795.09 (2024)



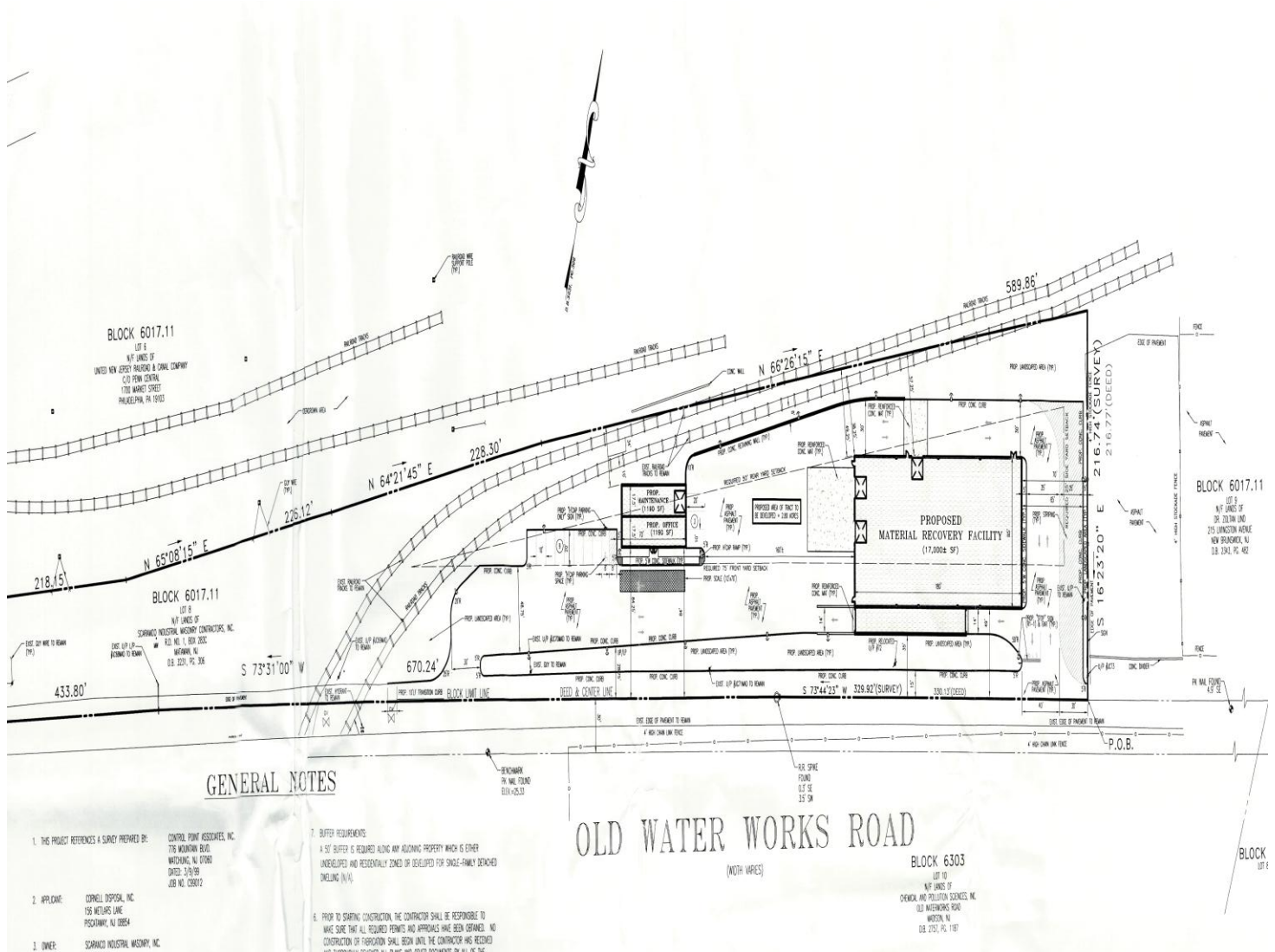
For additional property information or to arrange an inspection,  
please contact the exclusive brokers:

John Longo  
Senior Director  
973.379.6644 x 129  
JLongo@blauberg.com

Pat Clancy  
Associate  
973.379.6644 x 238  
PClancy@blauberg.com

The information contained herein has been obtained from sources considered to be reliable, but no guarantee of its accuracy is made by this company. In addition, no representation is made respecting zoning, condition of title, dimensions, or any matters of a legal or environmental nature. Such matters should be referred to legal counsel for determination. Terms and conditions are subject to change without prior notice. Subject to errors and omissions.

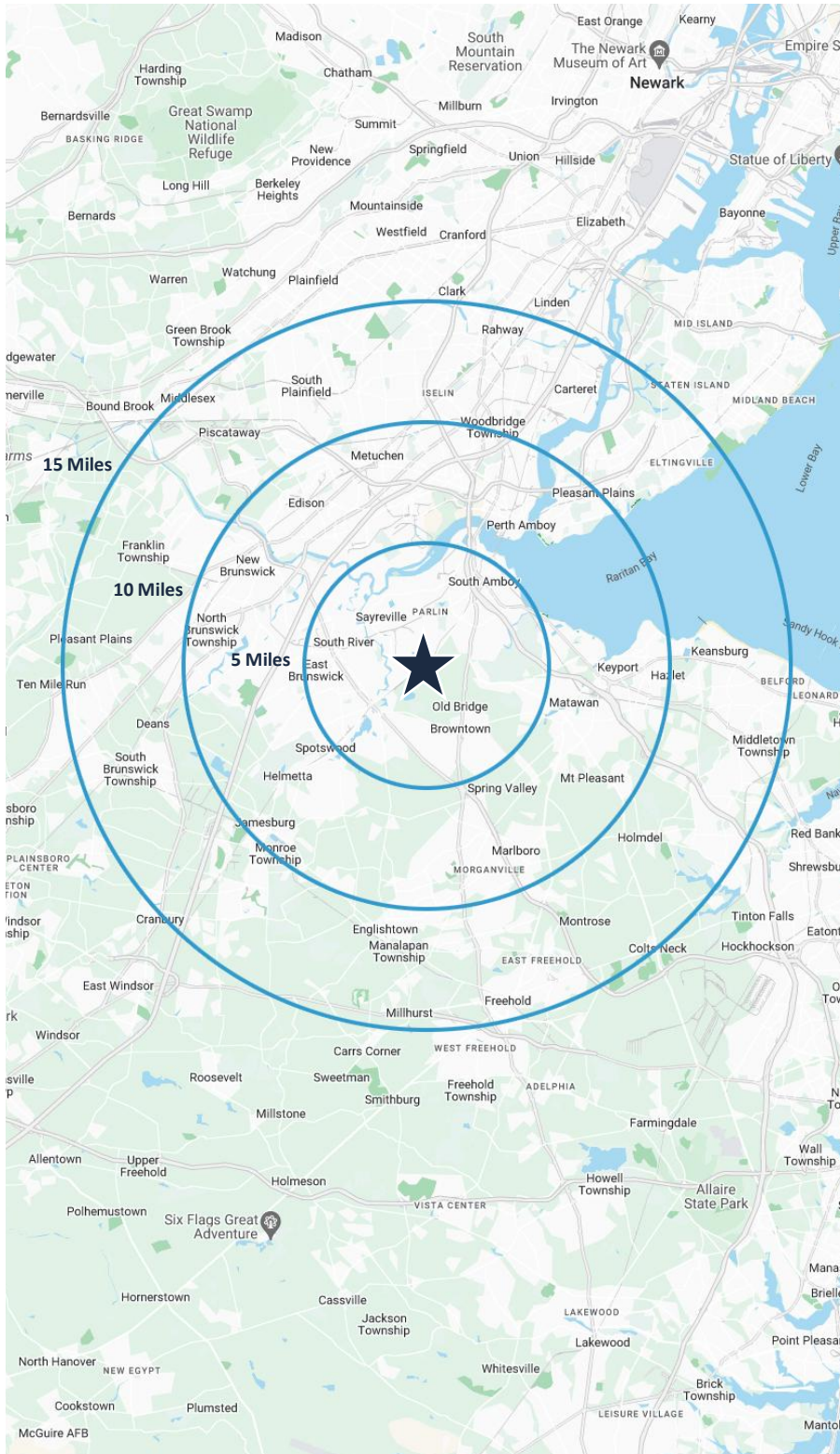




For additional property information or to arrange an inspection,  
please contact the exclusive brokers:

John Longo  
Senior Director  
973.379.6644 x 129  
JLongo@blauberg.com

Pat Clancy  
Associate  
973.379.6644 x 238  
PClancy@blauberg.com



### 5 MILES

- Total Population: 181,385
- Households: 68,575
- Median Household Income: \$112,305
- Average Household Size: 2.6
- Transportation to Work: 99,094
- Labor Force: 147,886

### 10 MILES

- Total Population: 826,309
- Households: 292,939
- Median Household Income: \$120,687
- Average Household Size: 2.7
- Transportation to Work: 438,492
- Labor Force: 673,135

### 15 MILES

- Total Population: 1.71M
- Households: 614,966
- Median Household Income: \$122,917
- Average Household Size: 2.7
- Transportation to Work: 905,134
- Labor Force: 1.39M

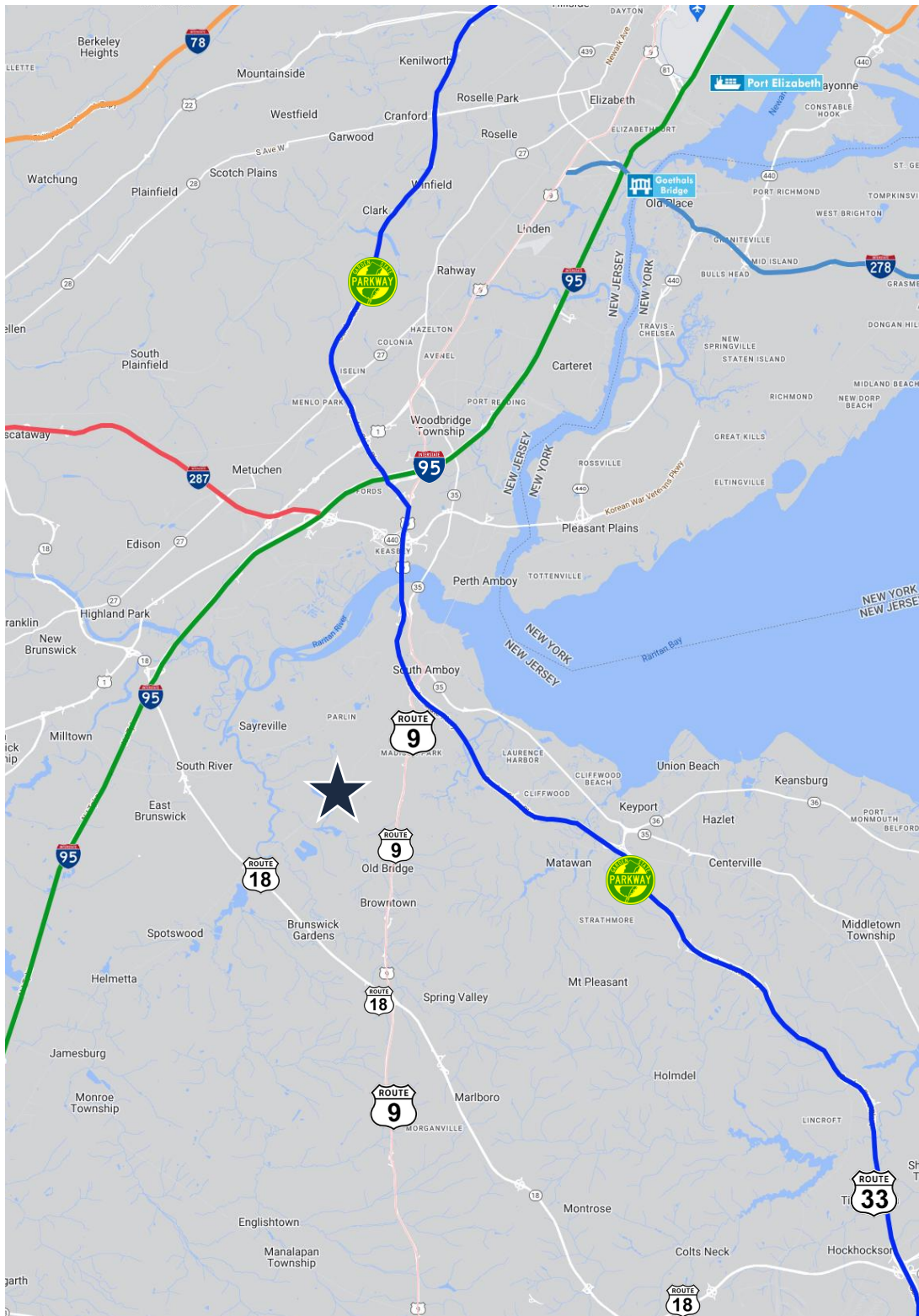
For additional property information or to arrange an inspection,  
please contact the exclusive brokers:

John Longo  
Senior Director  
973.379.6644 x 129  
JLongo@blauberg.com

Pat Clancy  
Associate  
973.379.6644 x 238  
PClancy@blauberg.com



## FOR SALE OR LEASE | 555 WATER WORKS ROAD | OLD BRIDGE, NJ



### ACCESSIBILITY



2.7 MI  
Route 18



2.9 MI  
Route 9



3.2 MI  
GSP Exit 123



6.5 MI  
I-95 Exit 9



9.4 MI  
I-287

For additional property information or to arrange an inspection,  
please contact the exclusive brokers:

John Longo  
Senior Director  
973.379.6644 x 129  
JLongo@blauberg.com

Pat Clancy  
Associate  
973.379.6644 x 238  
PClancy@blauberg.com

The information contained herein has been obtained from sources considered to be reliable, but no guarantee of its accuracy is made by this company. In addition, no representation is made respecting zoning, condition of title, dimensions, or any matters of a legal or environmental nature. Such matters should be referred to legal counsel for determination. Terms and conditions are subject to change without prior notice. Subject to errors and omissions.

