

1 IMESON PARK BLVD, JACKSONVILLE, FL 32218

±94,685 SF

FOR LEASE

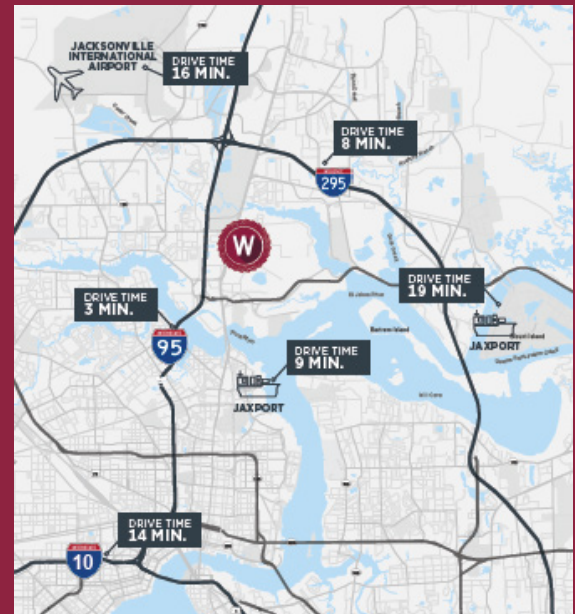
OFFICE

Supervisor of Elections Duval County

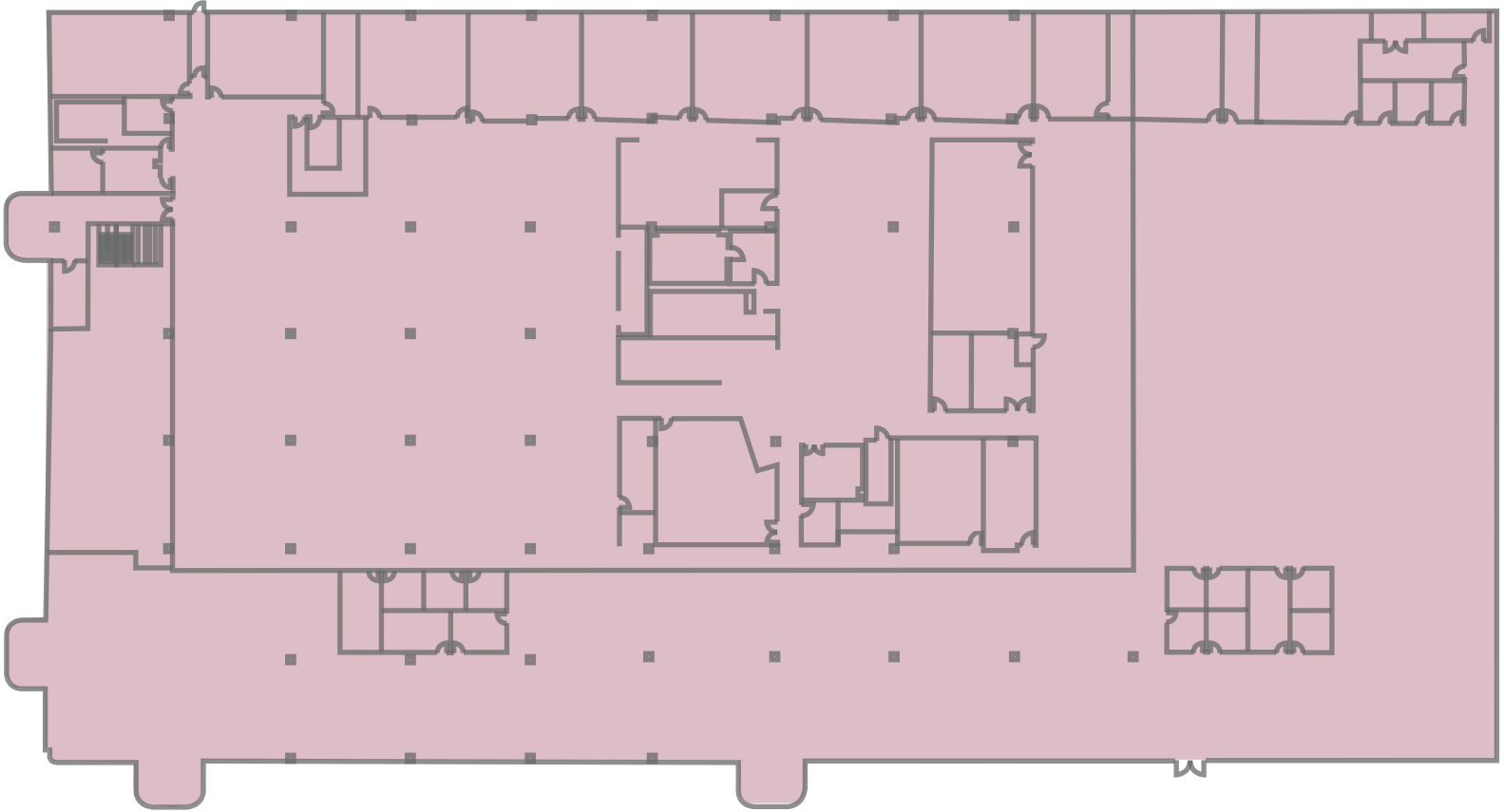
PROPERTY FEATURES

ONE IMESON is a unique 1.7 million square foot two-story warehouse /office, located within Imeson Industrial Park. With great transportation access via rail, sea, and road tenants of this park benefit by allowing for short transport times of their deliveries and makes it convenient and more desirable for the local labor pool than other parks in the submarket.

- 94,685 SF Mezzanine Level Office
- Full Floor Office
- 1,900 Auto Parking Spaces
- Served by JTA Bus Routes
- On-site Security
- Building Signage Available
- Immediately Available



94,685 SF MEZZANINE OFFICE



Contact Info:

TYLER NEWMAN
Executive Managing Director
904 380 8336
tyler.newman@cushwake.com

JACOB HORSLEY
Executive Managing Director
904 380 8335
jacob.horsley@cushwake.com

