

For Lease
Office Space



3 Park Plaza

Wyomissing, PA 19610

Property Features

- Centrally located in Berks County
- Great highway access
- Move-in ready spaces
- Close to many local food and entertainment amenities

For more information, contact

Kyle McKechnie

+1 610 370 8522

kmckechnie@naikeystone.com



875 Berkshire Blvd, Suite 102

Wyomissing, PA 19610

+1 610 779 1400

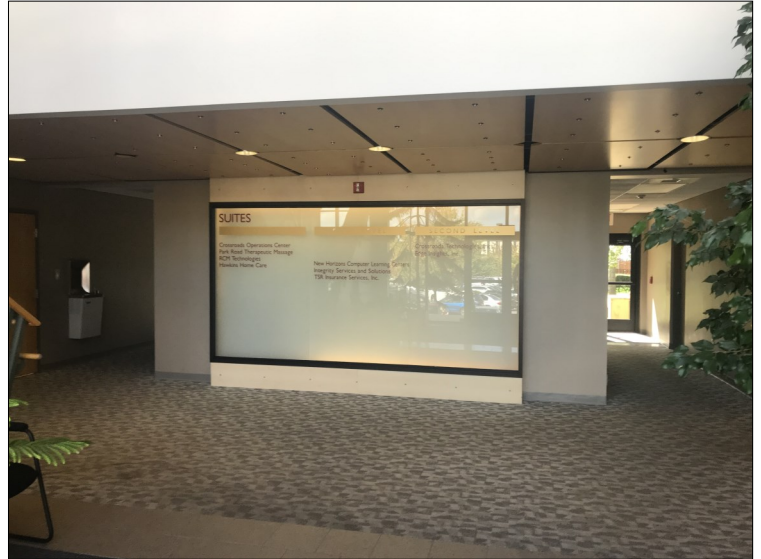
naikeystone.com

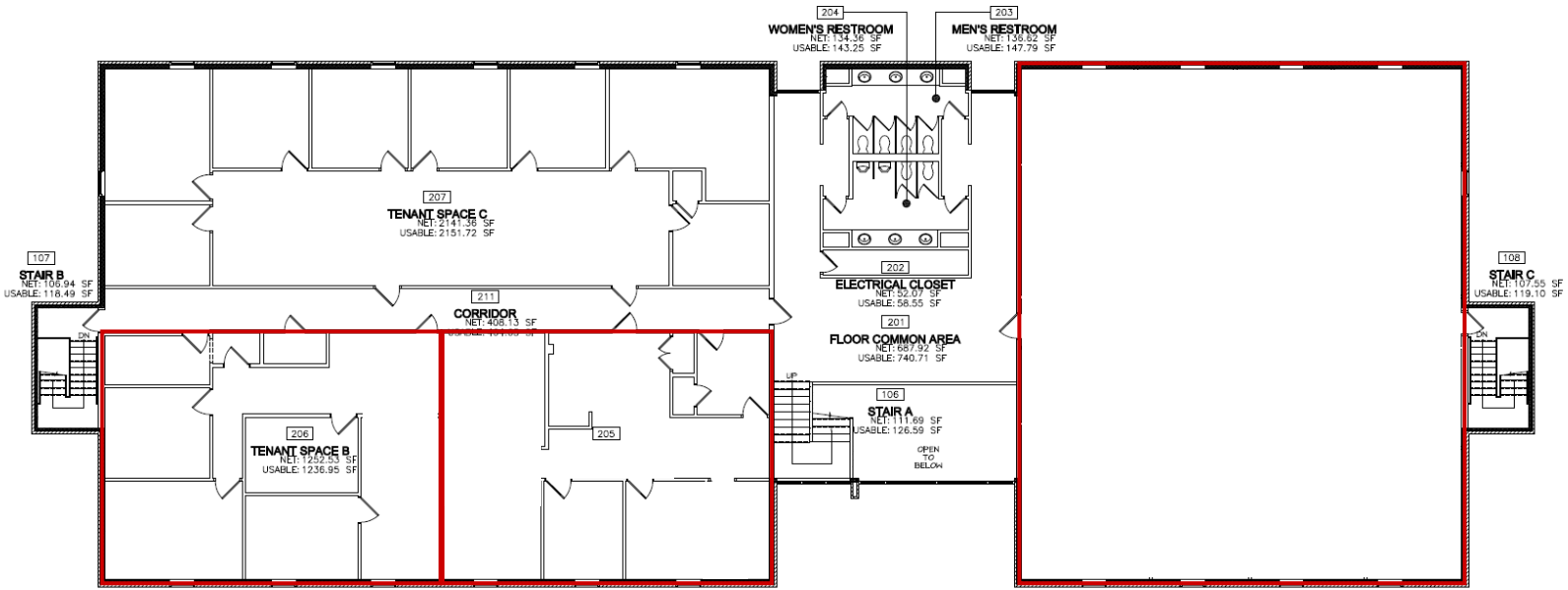
GENERAL DATA	
Building Name:	The Berkshire Building
Property Type:	Office Building
Building Size:	30,588 SF
Zoning:	C-2 - Commercial Retail District
Municipality:	Borough of Wyomissing

Located adjacent to Park Road and within a minute of both Rt. 422 and Rt. 222.



DESCRIPTION	
Available Suites:	201 - 3,992 SF 205 - 1,425 SF 206 - 1,534 SF 304 - 1,592 SF 305/306 - 3,647 SF
HVAC:	Central
Parking:	220 spaces
Cross Streets:	N. 6th Street & Douglass Street
Construction Type:	Brick & concrete
Water/Sewer:	Public
Electric:	At Tenant cost
Rental Rate:	Upon request
Lease Type:	NNN (Currently estimated at \$5.25/SF)

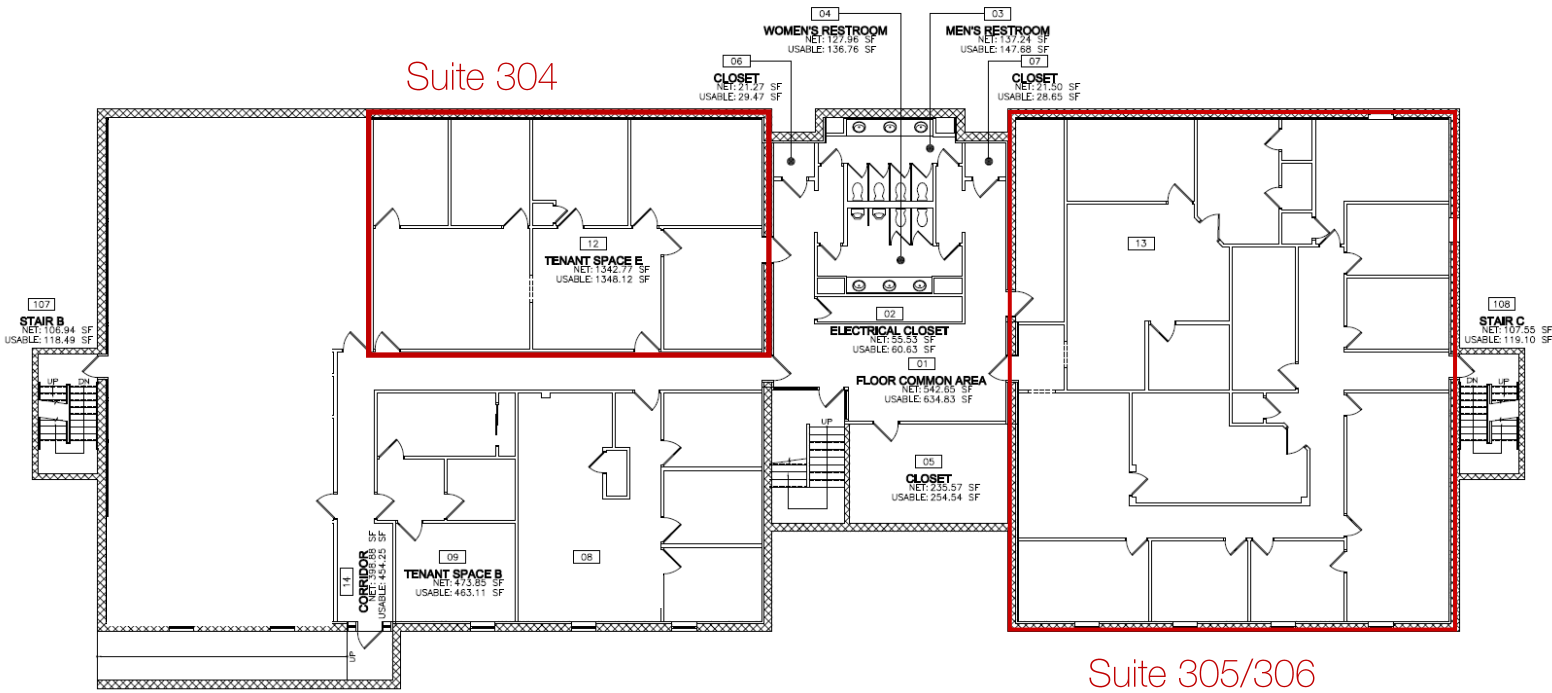




Suite 206

Suite 205

Suite 201



For Lease
3 Park Plaza

Bird's Eye View



220 Parking Spaces



875 Berkshire Blvd, Suite 102
Wyomissing, PA 19610
+1 610 779 1400
naikeystone.com