

# 2160 W 86th Street

Indianapolis, IN 46268



## Office

1,488 SF

### PROPERTY HIGHLIGHTS

- Conveniently Located off of 86th Street Thoroughfare
- The Building is Across the Street From St Vincent Hospital
- Surrounded by Area Restaurants and Retailers
- Ample On-Site Parking
- Suite Consists of a Waiting Area, Administrative Office, 3 Exam Rooms and Storage.



DEMOGRAPHICS	1 MILE	3 MILES	5 MILES
Total Households	5,925	27,189	58,241
Total Population	13,049	65,010	140,995
Average HH Income	\$53,695	\$77,243	\$87,813

**Mike Short**  
Director  
Mike@alpg.com  
C: 317.800.4664

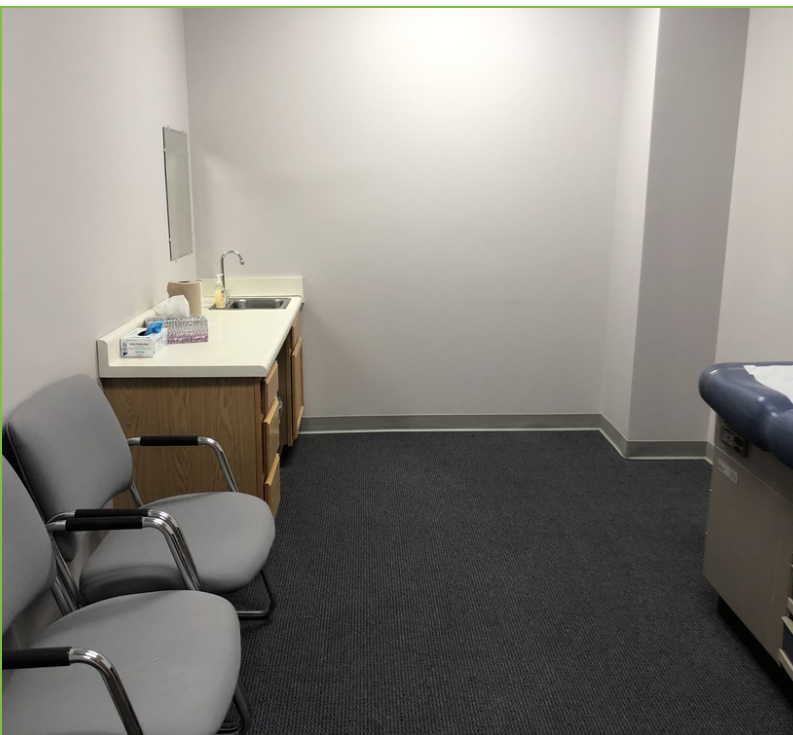
ALO Property Group  
9075 N. Meridian St., Ste. 175  
Indianapolis, IN 46260  
O: 317.853.7500  
www.alpg.com



# 2160 W 86th Street

Indianapolis, IN 46268

[Additional Photos](#)



**Mike Short**  
Director  
Mike@alopg.com  
C: 317.800.4664

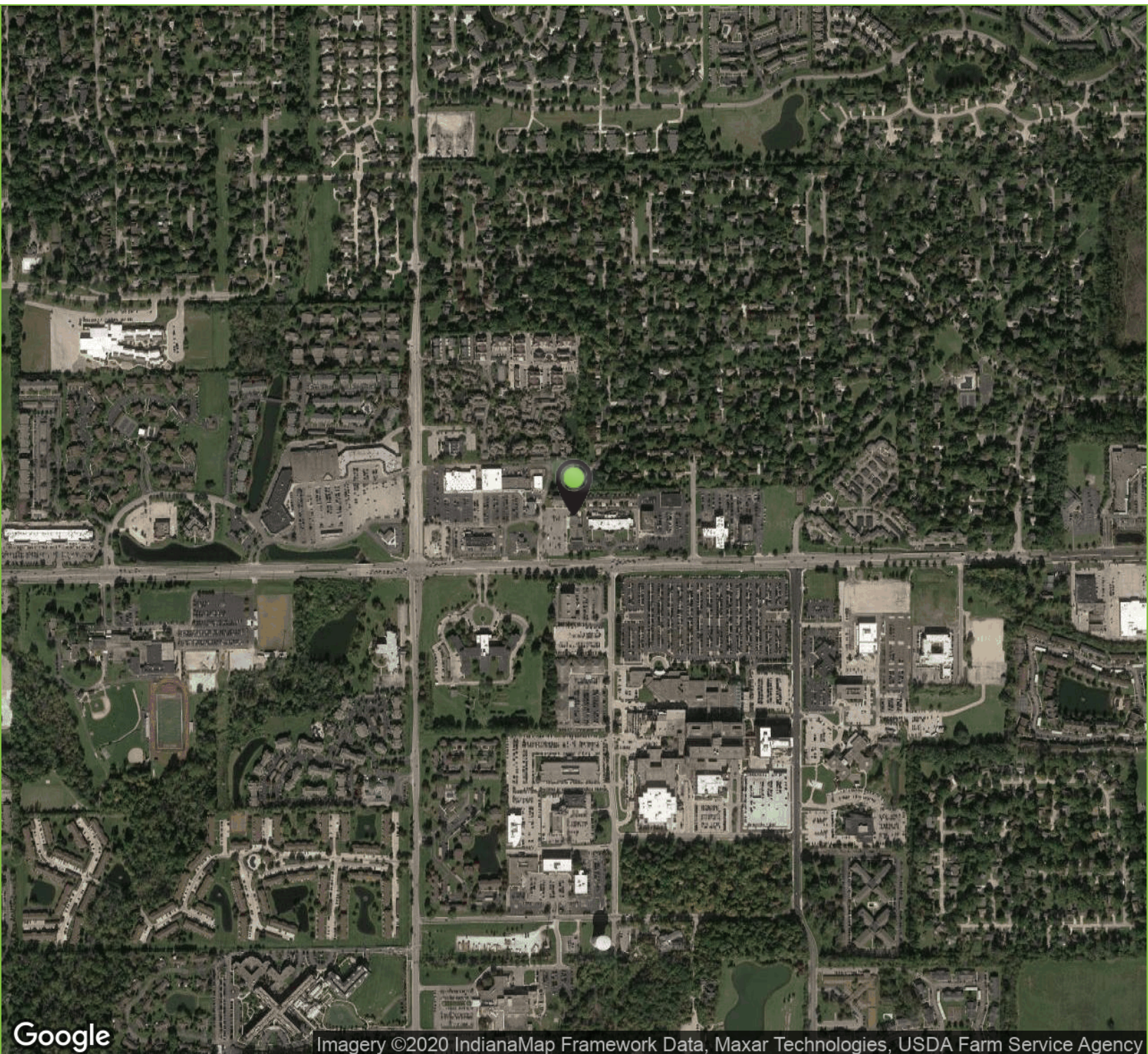
ALO Property Group  
9075 N. Meridian St., Ste. 175  
Indianapolis, IN 46260  
O: 317.853.7500  
www.alopg.com



# 2160 W 86th Street

Indianapolis, IN 46268

Aerial Maps



**Mike Short**  
Director  
Mike@alopg.com  
C: 317.800.4664

ALO Property Group  
9075 N. Meridian St., Ste. 175  
Indianapolis, IN 46260  
O: 317.853.7500  
www.alopg.com



# 2160 W 86th Street

Indianapolis, IN 46268

## Floor Plans



**Mike Short**  
Director  
Mike@alopg.com  
C: 317.800.4664

ALO Property Group  
9075 N. Meridian St., Ste. 175  
Indianapolis, IN 46260  
O: 317.853.7500  
www.alopg.com

