

KILCOMMINS  
GROUP  
DEVELOPMENT  
COMPANIES

Texas I.R. &  
Interventional  
Oncology  
142 Bella Katy Dr. Lot 11  
Katy, TX 77494

DATE OF ISSUE

First Draft	04/27/2023
Revisions	05/12/2023
Revisions	06/14/2023
Revisions	06/21/2023
Revisions	06/27/2023
Revisions	07/05/2023
Revisions	07/20/2023

NOT FOR  
CONSTRUCTION  
THIS PLAN IS FOR INFORMATION  
PURPOSES ONLY

These drawings and specifications are copyrighted:  
They are and shall remain the sole property of Purser  
Architectural, Inc. ("Architect") unless otherwise  
noted. These drawings are not to be used on other  
projects or extensions to this project except by  
agreement with appropriate compensation to Purser  
Architectural, Inc. Contractor is responsible for  
confirming and correlating dimensions at job site.  
Architect will not be responsible for construction  
means, methods, techniques or procedures or for safety  
precautions and programs in connection with this  
project. Reproduction of these drawings is prohibited  
without permission from Purser Architectural, Inc.  
These drawings are not valid for construction purposes  
without seal and signature from licensed architect.

PLAN NUMBER  
4759

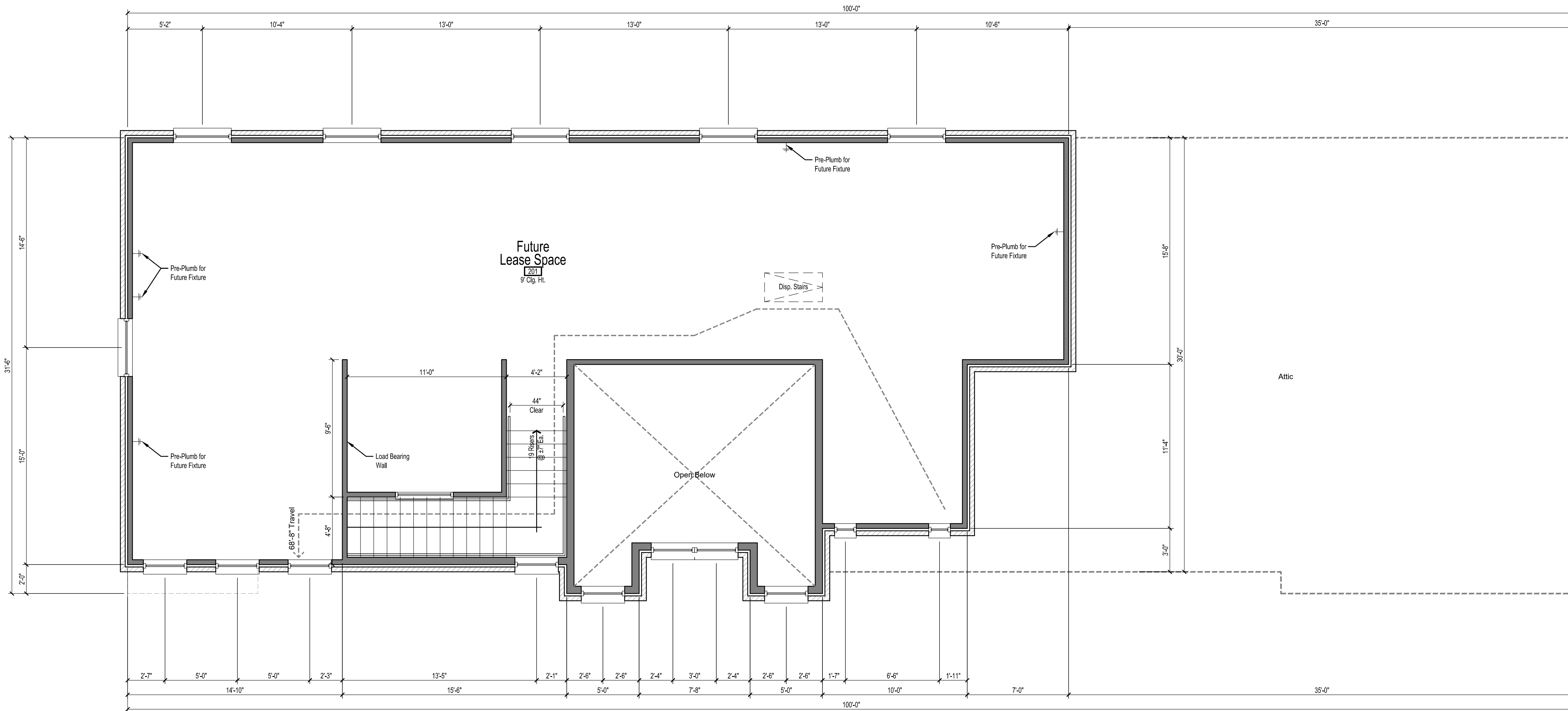
PROJ. #:  
D.21.003.KILC.BELLA.P2.10.RAFIEI

DATE: 07/21/2023

SHEET NUMBER:

A04

OF: 15



CONSTRUCTION NOTES:

- Separate Electrical Meters for First and Second Floors.
- Separate A/C and Furnace Units for First and Second Floors.
- PEX Plumbing Throughout The Entire Building.
- PROFLEX SCC 70 Sound Control at Second Floor.
- Provide Additional Quote for PROFLEX MSC 90.
- Plywood Finish Thru Second Floor, Ready for Final Finish Flooring.
- Sheetrock Finish at Ceiling, Taped, Unpainted.
- Exposed Studs, with Batt Insulation at Walls.
- A/C Distribution at Second Floor Not A Part.
- Lighting Installation at Second Floor Not A Part.

SECOND FLOOR PLAN

1/4" = 1'-0"  
Office Space (2nd Flr.): 1,650 S.F.

