

ONE MARKET PLAZA

RETAIL SPACES FOR LEASE



Kazuko Y. Morgan
Executive Vice Chairman | Lic. # 01070005
kazuko.morgan@cushwake.com
T. 415 773 3546

Heather Trimble
Director | Lic. # 02041605
heather.trimble@cushwake.com
T. 415 485 3779



ONE MARKET PLAZA

One Market Plaza is a complex of three office buildings (± 2,164,000 SQ.Ft.) located at 1 Market Street along the San Francisco Embarcadero. One Market Plaza has entrances on Market Street, Mission Street, Spear Street and Steuart Street in the Financial District. **Some of the major office tenants include Google, Autodesk, Morgan Lewis, and Wilson Sonsisi.** The Property is surrounded by world-class hotels, shopping, and dining that attracts both tourists and local business professionals daily.

One Market Plaza's ± 50,000 SF of retail consists of specialty shops, services and a remodelled food court in addition to full-service restaurants serving a vast array of local food to table cuisine.

Tenants include: One Market Restaurant, Mixt, Proper Food, Starbucks, Osha Thai, Cafe Elena, Una Mas, Matko, STK Steakhouse, and Super Duper Burgers.

ATRIUM CAFE RETAIL ± **2,332 SQ.FT.**

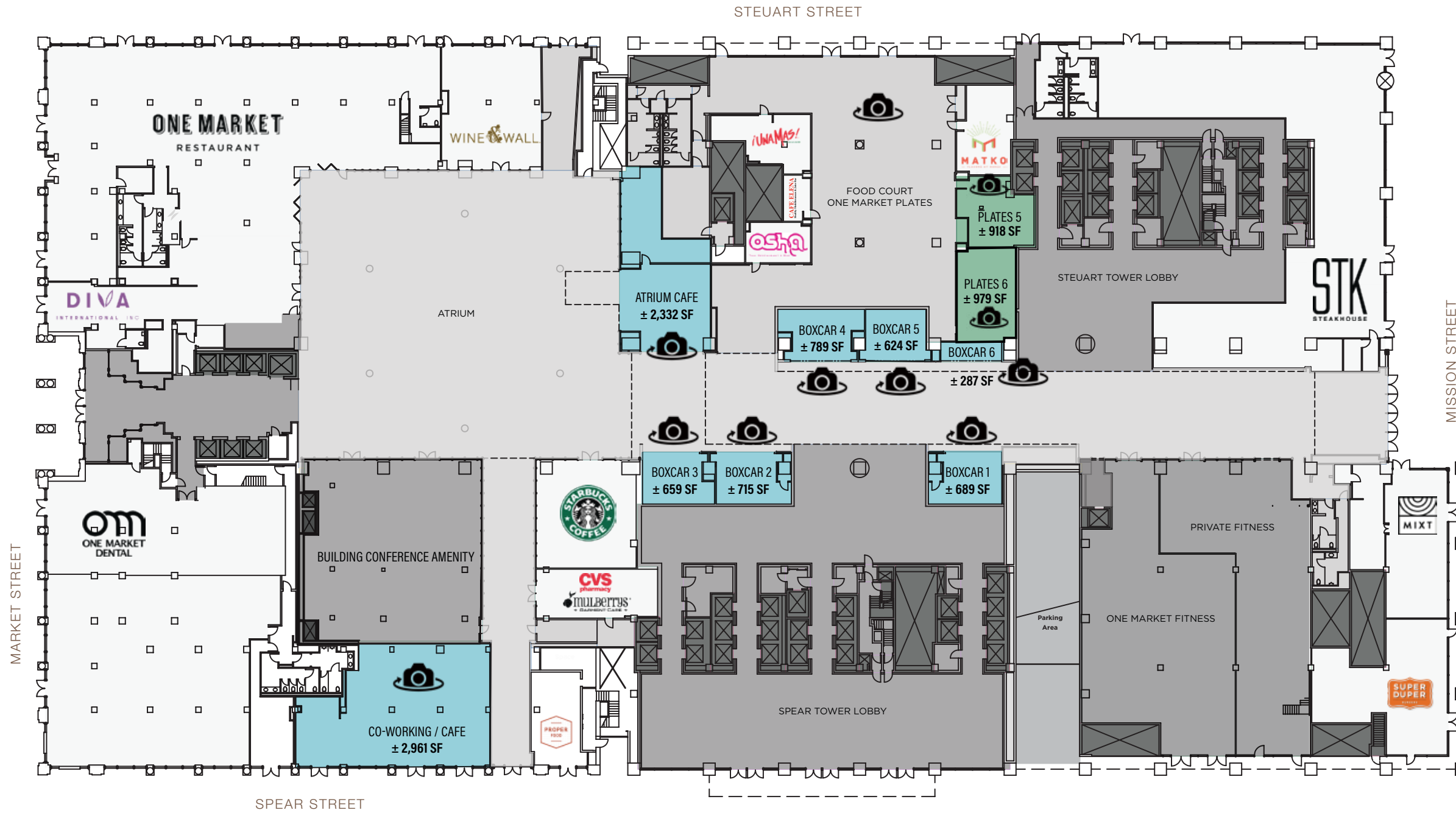
CO-WORKING CAFE RETAIL ± **2,961 SQ.FT.**

ONE MARKET PLATES (PLATES 5 & 6) ± **918-979 SQ.FT.**

BOXCARS (BOXCAR 1-6) ± **287-789 SQ.FT.**



FLOOR PLAN



RETAIL AVAILABILITIES

Atrium Cafe	± 2,332 sf
Co-Working / Cafe	± 2,961 sf
Plates 5	± 918 sf
Plates 6	± 979 sf
Boxcar 1	± 689 sf
Boxcar 2	± 715 sf
Boxcar 3	± 659 sf
Boxcar 4	± 789 sf
Boxcar 5	± 624 sf
Boxcar 6	± 287 sf



SPEAR STREET ENTRANCE - Cafe Retail & Proper Food



ONE MARKET PLATES



BOXCARS 2-3



BOXCAR 5



BOXCAR 6

THE ATRIUM

One Market Plaza's renovation features new wood floor panels, brand new furniture and more workspace to accommodate the growing number of working professionals and visitors to the plaza creating an open, vibrant, and energetic atrium.

The atrium restaurant space is strategically placed to benefit from the expanded public plaza and the heavy pedestrian traffic between the three office buildings. The space has the potential to be one of the best new meeting locations to serve local business professionals.



ATRIUM



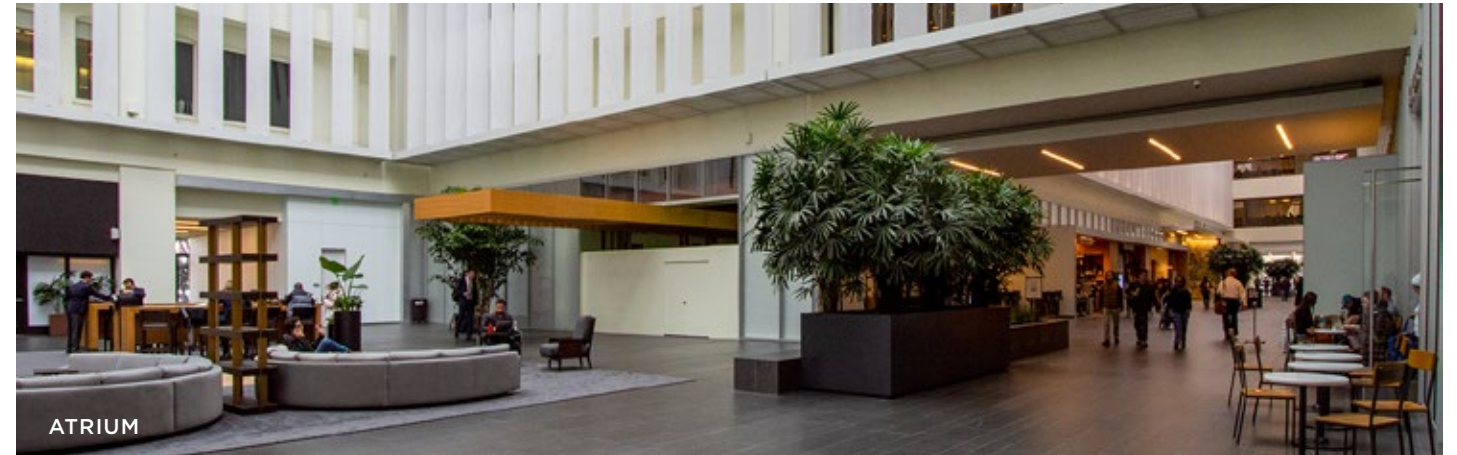
ATRIUM

THE ATRIUM CAFE

One Market Plaza also boasts a \pm 2,332 square foot cafe or restaurant opportunity within the renovated atrium. In the corner of the atrium and end of the small retail corridor, the space boasts wraparound frontage and lots of natural light from the immense skylight over the atrium.

Off the Spear Street entrance, the \pm 2,961 square foot second-generation cafe benefits from the high ceilings and its own street entrance.

ATRIUM CAFE \pm 2,332 SQ.FT.
CO-WORKING / CAFE \pm 2,961 SQ.FT.

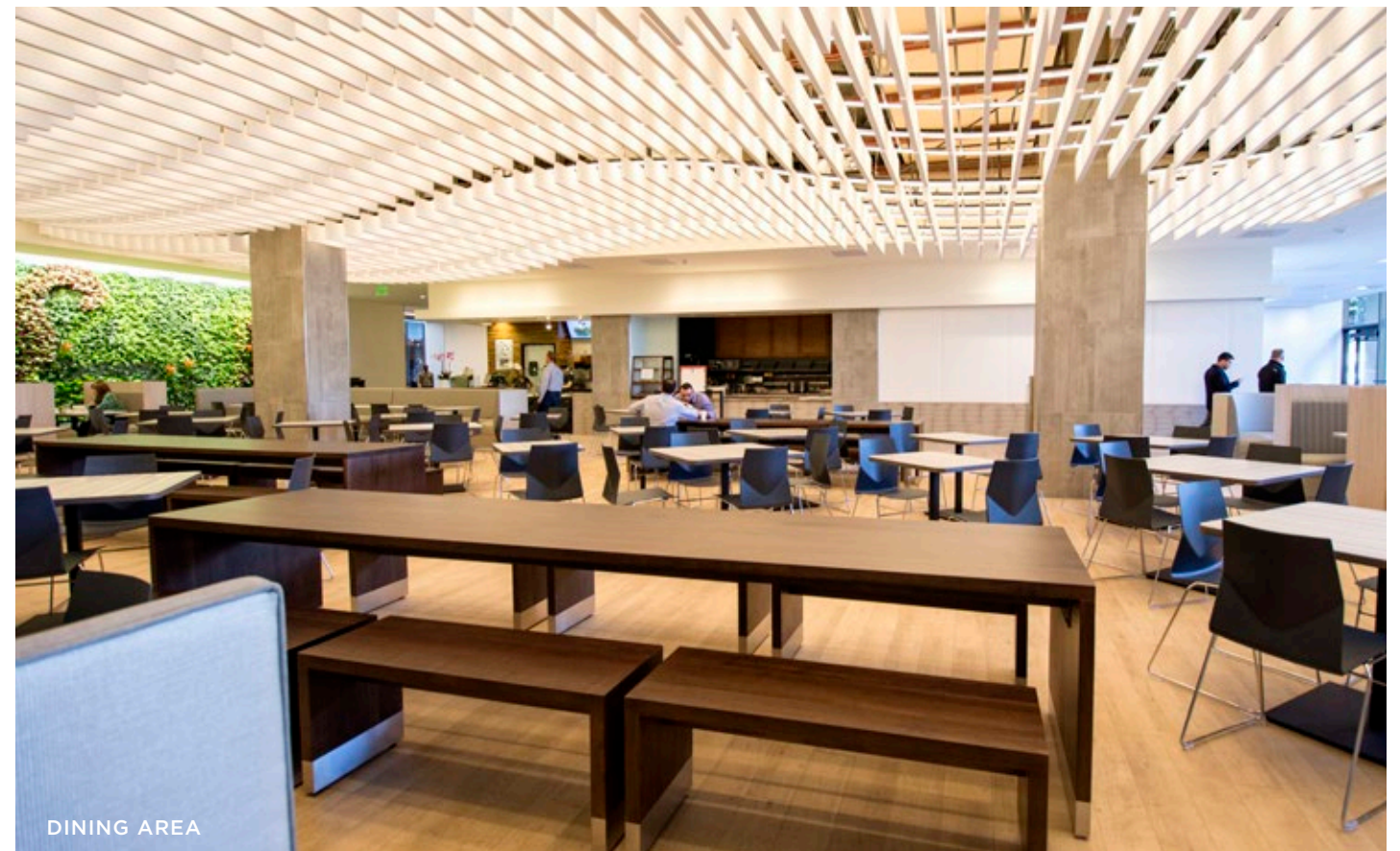
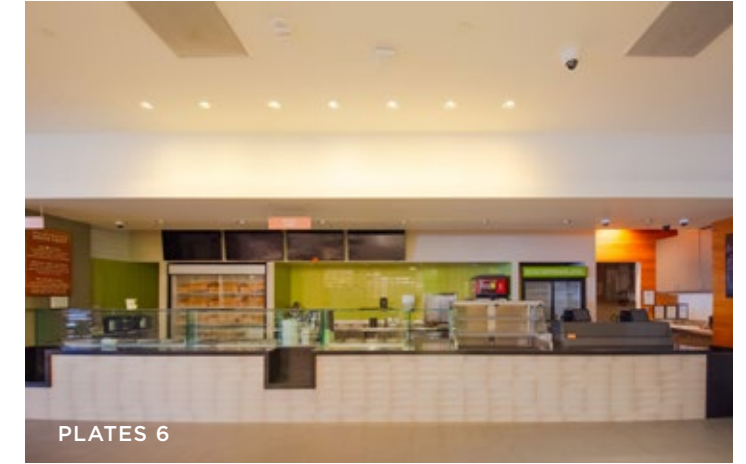


ONE MARKET PLATES

One Market Plates serves a variety of food options in this bright and spacious food court. The spacious dining area with abundant seating is the ideal lunch spot for a quick lunch with colleagues.

PLATES 5 ± 918 SQ.FT.

PLATES 6 ± 979 SQ.FT.



THE BOXCARS

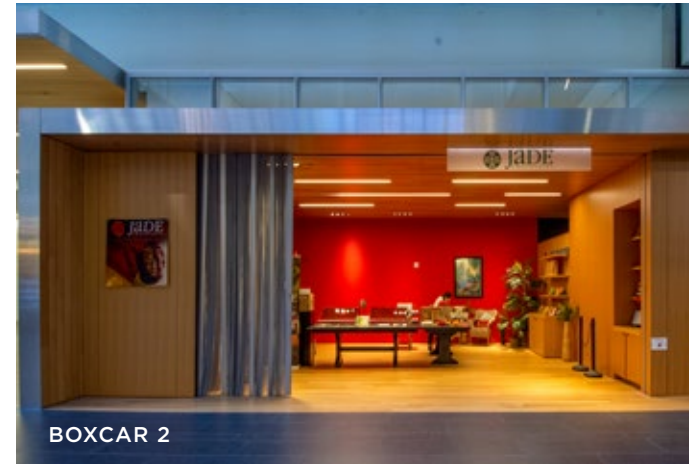
One Market Plaza's boxcars line the pedestrian walkway that connects the three office towers to the atrium with entrances on each street that borders the plaza.

These retail opportunities are great for boutique retail and have excellent move in conditions.

- BOXCAR 1 ± 689 SQ.FT.
- BOXCAR 2 ± 715 SQ.FT.
- BOXCAR 3 ± 659 SQ.FT.
- BOXCAR 4 ± 789 SQ.FT.
- BOXCAR 5 ± 624 SQ.FT.
- BOXCAR 6 ± 287 SQ.FT.



BOXCAR 1



BOXCAR 2



BOXCAR 3



BOXCARS 4-6



ATRIUM WALKWAY

HIGHLIGHTS

- Prominent A+ corner location
- In the heart of San Francisco's downtown workforce
- Steps away from BART, Muni and the Ferry Terminals
- Easy access to the Bay Bridge
- Walking distance to prominent restaurants including One Market,Americano, International Smoke and Boulevard
- On-site parking garage
- High pedestrian traffic
- Office tenants include Autodesk and Google



THE LANDSCAPE

TRADE AREA STATISTICS

Total Office SF: 46,806,595
Total Residential SF: 5,613,422

MAJOR OFFICE TENANTS

- | | |
|-------------------------------------------------------------------------------------|----------------------------------------------------------------------------------------------|
| 1 Google, Autodesk
One Market Street | 11 SoFi
234 First Street |
| 2 Salesforce
350 Mission Street, 415 Mission Street,
50 Fremont Street | 12 Gap HQ
2 Folsom Street, 1 Harrison Street |
| 3 Wells Fargo
333 Market Street | 13 Google
345 Spear Street, 1 Market Street,
188 Embarcadero, 2 Harrison Street |
| 4 JP Morgan
560 Mission Street | 14 Twilio
101 Spear Street, 375 Beale Street |
| 5 Databricks
160 Spear Street | 15 Anthropic, Slack
500 Howard Street |
| 6 Meta (Facebook & Instagram)
Park Tower - 250 Howard Street | 16 Deloitte
555 Mission Street |
| 7 Blackrock
400 Howard Street | 17 Morrison & Foerster LLP
425 Market Street |
| 8 Sephora, Yelp
350 Mission Street | 18 Okta
100 First Street |
| 9 DocuSign
221 Main Street | 19 PwC
405 Howard Street |
| 10 Fitbit
215 Fremont Street | 20 KPMG
55 Second Street |

NEW RESIDENTIAL DEVELOPMENTS

- | | |
|-------------------------------------------------------------------|--------------------------------------------------------------|
| 1 One Stuart Lane
Housing Units: 120
Opened 2021 | 4 325 Fremont
Housing Units: 118
Delivery: 2027 |
| 2 Beale @ Main
Housing Units: 713
Delivery: Proposed | 5 Avery 450
Housing Units: 548
Opened 2019 |
| 3 Mira
Housing Units: 391
Opened 2020 | 6 500 Folsom
Housing Units: 537
Opened 2019 |



THE FERRY BUILDING



ONE MARKET RESTAURANT



STARBUCKS



PROPER FOOD



MIXT



PHILZ COFFEE



STK STEAKHOUSE



SUPER DUPER BURGER



FERRY BUILDING

EMBARCADERO

	STEUART STREET	
5 Embarcadero	1 ONE MARKET ONE MARKET STREET	
	SPEAR STREET	
	101 FEDERAL RESERVE BUILDING	
DRUMM STREET	MAIN STREET	
	245 citibank	
	245	
DAVIS STREET	BEALE STREET	
nigella 388	333	
Nosh Cafe 388	333 Starbucks	
Jack's Shoe Repair 388	45 Fremont	
SUBWAY 388		
CEMOTE 388		
388		
FRONT STREET	FREMONT STREET	
1 Front	425 AT&T	
	425 Bank of America	
	455	
	455	
	455	
BATTERY STREET	1ST STREET	
svb 532	525	
	525	
SANSOME STREET	525	
1 SANSOME	555	
THE HOLBROOK HOUSE 542	575	
548	581	
550	595	
Sutter Station 554	595	
560		
562	2ND STREET	
564	601	
570	609	
576	615	
Bay Food Mini Market 578	619	
580		
MONTGOMERY STREET	NEW MONTGOMERY STREET	
One Post Plaza		
1 Post	643	
648	645	
650	651	
652	653	
658		
The RITZ CARLTON RESIDENCES 690		
	ANNIE STREET	
	685	
	685	
	685	
	685	

SALESFORCE TRANSIT CENTER

ONE MARKET PLAZA



Kazuko Y. Morgan
Executive Vice Chairman | Lic. # 01070005
kazuko.morgan@cushwake.com
T. 415 773 3546

Heather Trimble
Director | Lic. # 02041605
heather.trimble@cushwake.com
T. 415 485 3779

