

The Marketplace

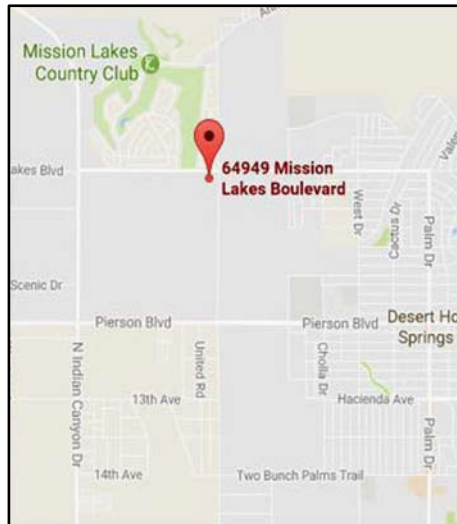
MISSION LAKES SHOPPING CENTER

FOR LEASE

**64949 MISSION LAKES BLVD.
DESERT HOT SPRINGS, CA 92240**

- ◆ \$1.25 PER SF + .40 NNN
- ◆ BRAND NEW MISSION LAKES SHOPPING CENTER
- ◆ MULTIPLE AREAS FROM 796 SF~32,000 SF.
- ◆ HOME TO FIVE STAR FITNESS
- ◆ MOVE-IN INCENTIVES
- ◆ 13,000 SF BUILD-TO-SUIT PAD
- ◆ SITE IS CLOSE TO AFFLUENT MISSION LAKES COMMUNITY
 - RESTAURANTS
 - FOOD COURT
 - GROCERY OUTLET
 - DRY CLEANERS
 - POSTAL/SHIPPING SERVICE
 - PHARMACY
 - BUSINESS SERVICES

BE A PART OF THIS EXCITING DEVELOPMENT!



The Marketplace

MISSION LAKES SHOPPING CENTER

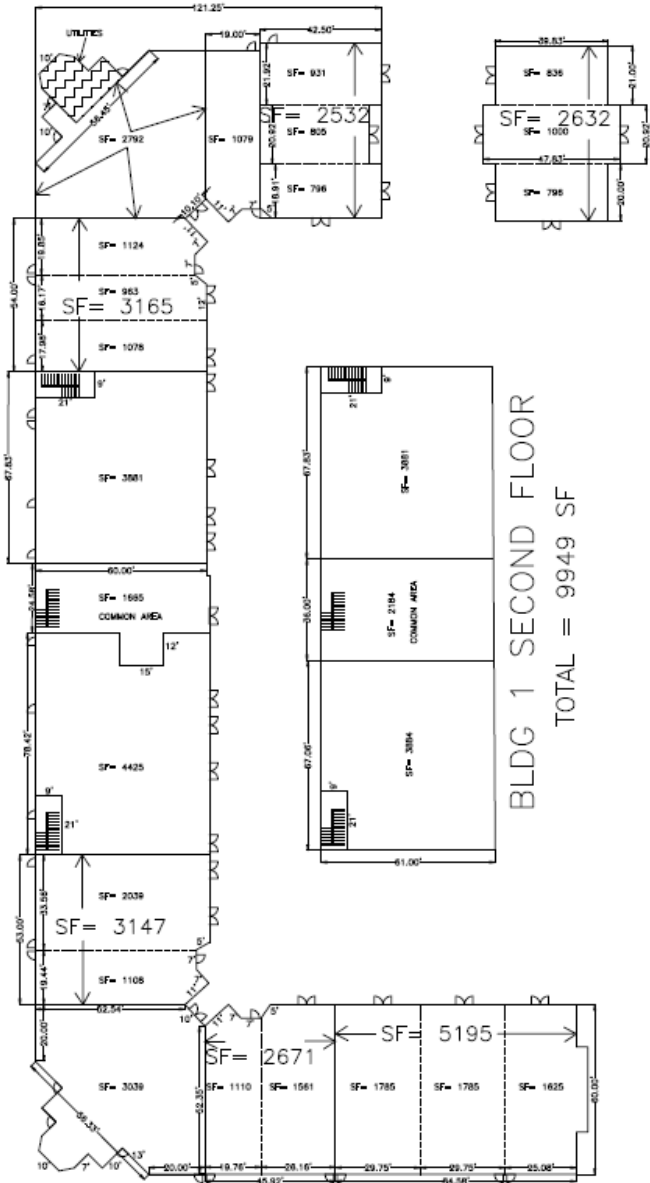
SITE PLAN & AVAILABLE SPACES



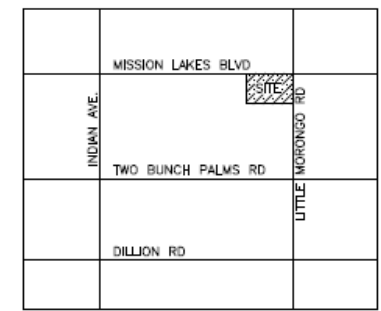
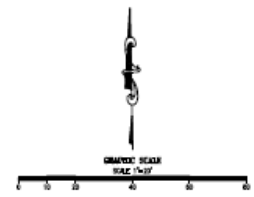
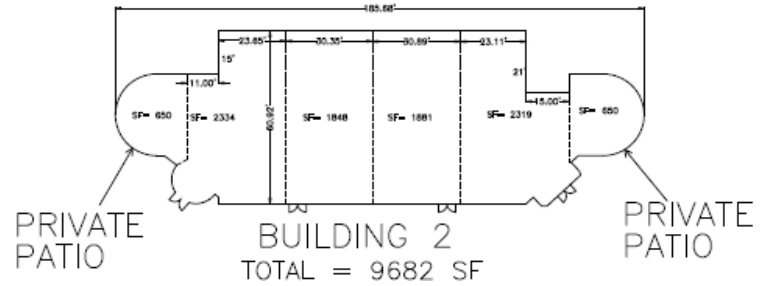
The Marketplace

MISSION LAKES SHOPPING CENTER

TOTAL BUILDING 1 = 36,223 SF



BLDG 1 SECOND FLOOR
TOTAL = 9949 SF



N.T.S.



AMIR ENGINEERING
CIVIL ENGINEERING / LAND SURVEYING
180 LIVING SPRING SUITE A, PALM SPRINGS CA 92262
PH: (760) 378-7424 FAX: (760) 378-7425

THE VILLAGE AT MISSION LAKES

The Marketplace

MISSION LAKES SHOPPING CENTER

