

BASIS OF BEARINGS

THE BEARING OF SOUTH 39°32'01" EAST FOR THE CENTERLINE OF SOUTH ROGERS ROAD AS SHOWN ON THE PARCEL MAP FILED IN BOOK 58 OF PARCEL MAPS, PAGE 05, STANISLAUS COUNTY RECORDS.



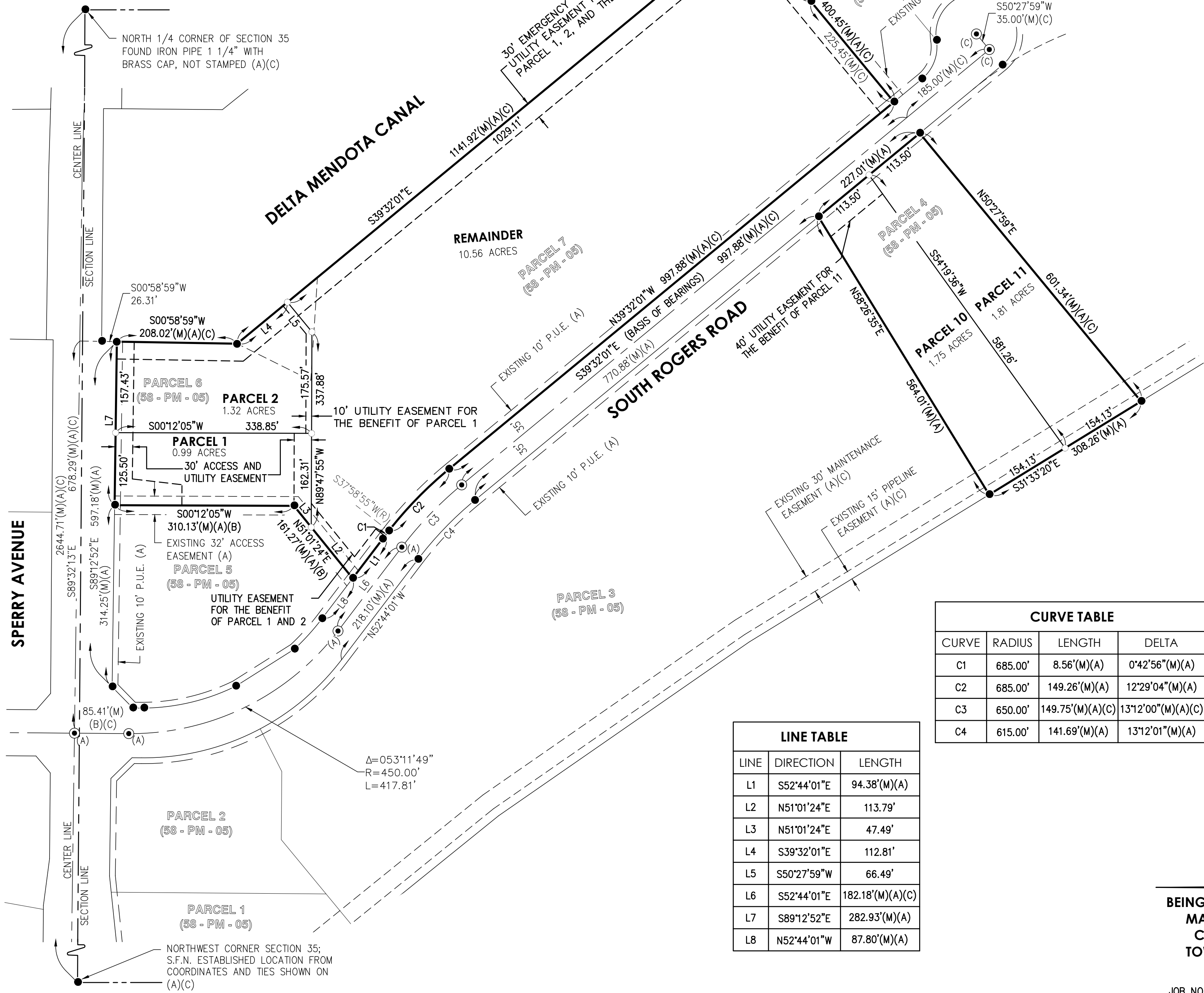
GDR ENGINEERING, Inc.
 ENGINEERING/SURVEYING/PLANNING
 3525 MITCHELL ROAD, SUITE G CERES, CA 95307
 TELEPHONE: (209) 538-3360 FAX: (209) 538-7370
 www.gdrengeering.com

GENERAL NOTES

1. ALL BEARINGS AND DISTANCES SHOWN ARE MEASURED UNLESS OTHERWISE NOTED.
2. ALL DISTANCES AND DIMENSIONS SHOWN ARE IN FEET AND DECIMAL PARTS THEREOF.
3. ALL RECORD INFORMATION IS FROM STANISLAUS COUNTY RECORDS, UNLESS OTHERWISE NOTED.
4. PRIOR TO COMMENCEMENT OF ANY CONSTRUCTION ON THIS SITE, IT IS ADVISED THAT ALL INVOLVED PARTIES REVIEW SECTION 8771 AND SECTION 8725 OF THE STATE OF CALIFORNIA BUSINESS AND PROFESSIONS CODE AND SECTION 605 OF THE CALIFORNIA STATE PENAL CODE TO ENSURE THAT MONUMENT CONSERVATION HAS BEEN PROPERLY ADDRESSED.

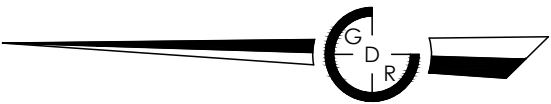
LEGEND

- MONUMENT SET, A 3/4" IRON PIPE TAGGED L.S. 7823, OR NAIL WITH BRASS TAG STAMPED L.S. 7823, UNLESS OTHERWISE NOTED.
- ⊙ MONUMENT FOUND, A 3/4" IRON PIPE TAGGED L.S. 7823 (A), MONUMENT WELL TO BE SET AFTER COMPLETION OF ROGERS ROAD IMPROVEMENTS, UNLESS OTHERWISE NOTED.
- ⊙ MONUMENT FOUND, A 3/4" IRON PIPE TAGGED L.S. 7823 (C), UNLESS OTHERWISE NOTED.
- MONUMENT FOUND, A 3/4" IRON PIPE TAGGED L.S. 7823 (A), UNLESS OTHERWISE NOTED.
- (M) MEASURED ON THIS SURVEY
- (A) BOOK 58 OF PARCEL MAPS, PAGE 05
- (B) BOOK 58 OF PARCEL MAPS, PAGE 61
- (C) BOOK 58 OF PARCEL MAPS, PAGE 52
- (R) RADIAL BEARING
- P.U.E. PUBLIC UTILITIES EASEMENT



CURVE	RADIUS	LENGTH	DELTA
C1	685.00'	8.56'(M)(A)	0°42'56"(M)(A)
C2	685.00'	149.26'(M)(A)	12°29'04"(M)(A)
C3	650.00'	149.75'(M)(A)(C)	13°12'00"(M)(A)(C)
C4	615.00'	141.69'(M)(A)	13°12'01"(M)(A)

LINE	DIRECTION	LENGTH
L1	S52°44'01"E	94.38'(M)(A)
L2	N51°01'24"E	113.79'
L3	N51°01'24"E	47.49'
L4	S39°32'01"E	112.81'
L5	S50°27'59"W	66.49'
L6	S52°44'01"E	182.18'(M)(A)(C)
L7	S89°12'52"E	282.93'(M)(A)
L8	N52°44'01"W	87.80'(M)(A)



SCALE: 1" = 120'

**NO. 26-01
 PARCEL MAP FOR
 SPERRY COMMERCIAL PARK**

BEING A DIVISION OF PARCEL 4, 6 AND 7 AS SHOWN ON THE PARCEL MAP FILED IN BOOK 58 OF PARCEL MAPS, PAGE 5, STANISLAUS COUNTY RECORDS, LYING IN THE WEST HALF OF SECTION 35, TOWNSHIP 5 SOUTH, RANGE 7 EAST, MOUNT DIABLO MERIDIAN, CITY OF PATTERSON STANISLAUS COUNTY, CALIFORNIA

PRELIMINARY