

For Sale
\$6,221,000.00 (\$3.95 PSF)

36 Acres Commercial zoning S Marksheffel Rd

Colorado Springs, CO 80916

Located in Commercial Aeronautical Zone

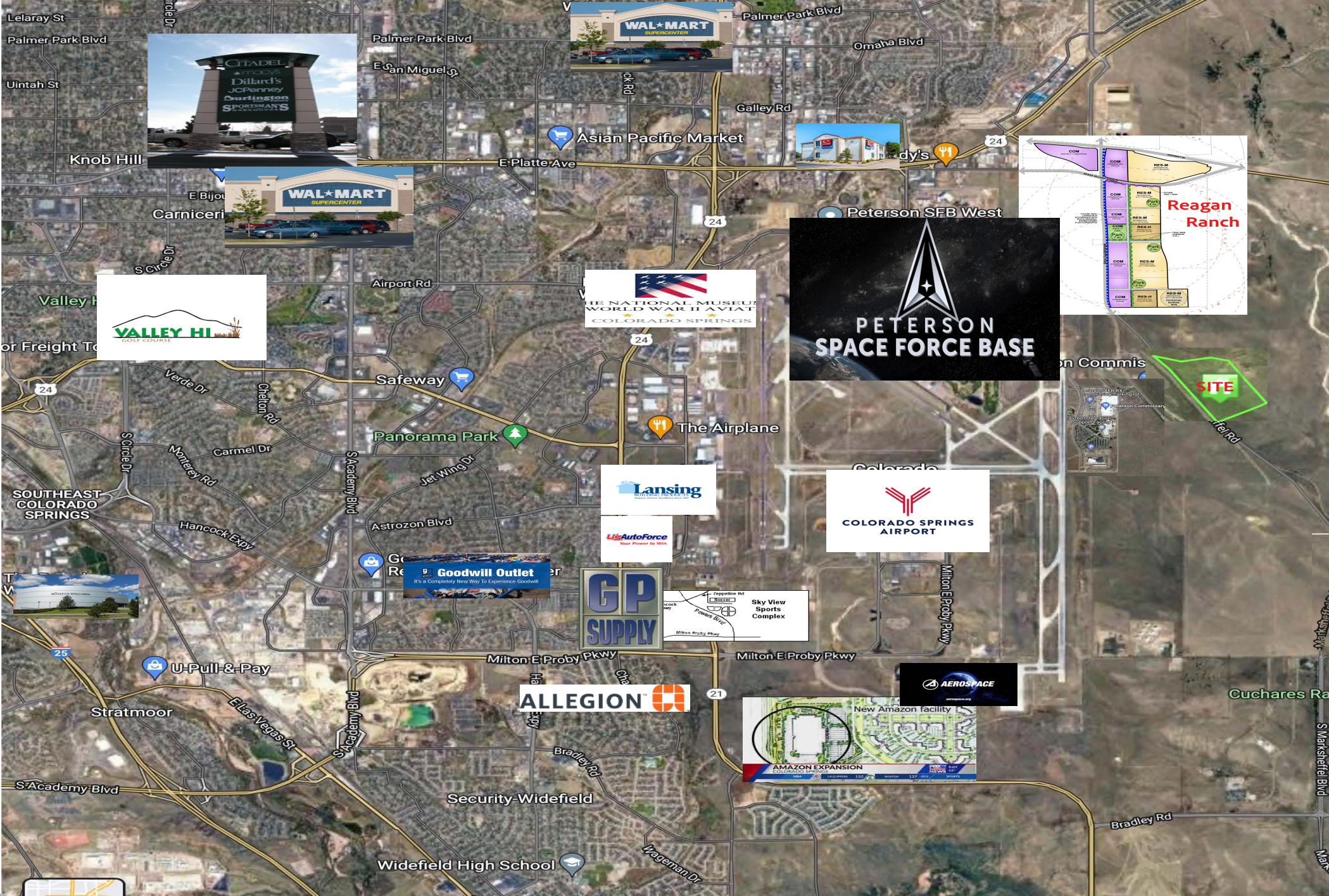
Borders massive Banning Lewis Ranch project near the East Gate of Peterson Air Force Base

Just West of the Reagan Ranch commercial/residential development project.

Nearby noteworthy operations include the Colorado Springs Airport, new Amazon facilities,

And Peterson Space Force Base

RE/MAX Commercial
John Schinkel
719 499-0460
Schinkel@frii.com



- Zoned APD PIP2/CR AO
Permitted uses include:
- *Warehouse
 - *Financial Services
 - *General Offices
 - *Labs and or Clinics
 - *Automotive Repair
 - *Building Maintenance services
 - *Building Office Support Services
 - *Business Park
 - *Communication Services
 - *Data Center
 - *Mini-warehouses
 - *Club (membership, social and recreational)
 - *Community Gardens
 - *College and University
 - *Proprietary Schools
 - *Construction and/or Contractor Yards
 - *Custom Manufacturing
 - *Heavy and Light General Industry
 - *Manufacturing
 - *Research and Development
 - *Truck Terminal
 - And many others

