

FOR LEASE

R&D/FLEX BUILDING FOR LEASE

*±3,267 SF Single-Tenant
R&D/Flex Building*

305 OLD COUNTY ROAD
SAN CARLOS, CA

KIDDER.COM

 Kidder
Mathews



PROPERTY HIGHLIGHTS

- Single-tenant R&D/Flex building
- Fire sprinklers
- Two (2) restrooms
- 22' Clear height
- 400A at 120/240V, 3 Phase power
- Building signage opportunity
- Excellent frontage along Old County Road
- Close proximity to US 101, El Camino Real, and public transit

±3,267 SF

AVAILABLE

\$2.35 PSF

INDUSTRIAL GROSS

22'

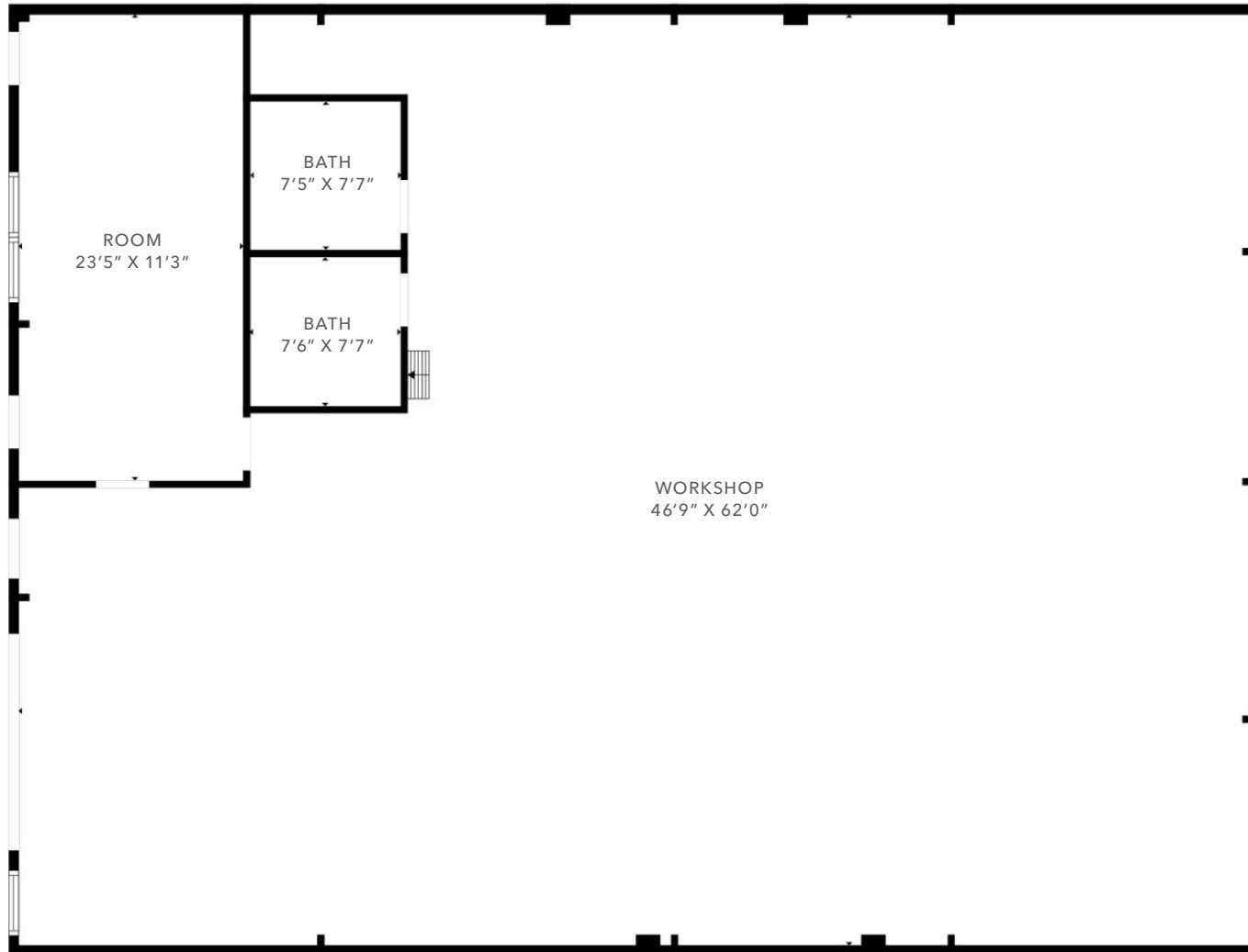
CLEAR HEIGHT

KIDDER.COM

This information supplied herein is from sources we deem reliable. It is provided without any representation, warranty, or guarantee, expressed or implied as to its accuracy. Prospective Buyer or Tenant should conduct an independent investigation and verification of all matters deemed to be material, including, but not limited to, statements of income and expenses. Consult your attorney, accountant, or other professional advisor. All Kidder Mathews designs are the sole property of Kidder Mathews. Branded materials and layouts are not authorized for use by any other firm or person.



FLOOR PLAN



±3,267 SF

AVAILABLE

\$2.35 PSF

INDUSTRIAL GROSS

22'

CLEAR HEIGHT

BRETT WEBER

Executive VP, Shareholder

650.771.3000

brett.weber@kidder.com

LIC N° 00901454

JOHN MCLELLAN

Executive VP, Shareholder

415.418.9880

john.mclellan@kidder.com

LIC N° 01869489

DREW RAMIREZ

Senior Associate

650.430.1433

drew.ramirez@kidder.com

LIC N° 02209477

FLOOR PLAN NOT TO SCALE

KIDDER.COM

This information supplied herein is from sources we deem reliable. It is provided without any representation, warranty, or guarantee, expressed or implied as to its accuracy. Prospective Buyer or Tenant should conduct an independent investigation and verification of all matters deemed to be material, including, but not limited to, statements of income and expenses. Consult your attorney, accountant, or other professional advisor. All Kidder Mathews designs are the sole property of Kidder Mathews. Branded materials and layouts are not authorized for use by any other firm or person.





SUBJECT PROPERTY

<p>BRETT WEBER 650.771.3000 brett.weber@kidder.com LIC N° 00901454</p>	<p>JOHN MCLELLAN 415.418.9880 john.mclellan@kidder.com LIC N° 01869489</p>	<p>DREW RAMIREZ 650.430.1433 drew.ramirez@kidder.com LIC N° 02209477</p>
---	---	---

--	--	--

