

For
Lease

\$16/SF NNN
Upper level
\$11/SF NNN
Lower level

General Commercial
Zone – C2
Hood River Landmark
currently housing
Wildwood Academy and
The Ruins Event Center

4125 RSF street level
commercial space and
1612 RSF at daylit
basement

Available 7/1/2024
NNN approx. \$3.90/SF
at street level and
\$1.95/SF at basement
level (excludes utilities)

Originally constructed in
early 1900's and fully
remodeled in 2018

Commercial Space in Downtown Hood River



13 Railroad Street, Hood River, OR 97031

Features Include: Newer roof and upgraded insulation. Upgraded HVAC, Plumbing, and Electrical Systems. Available for a variety of commercial uses, see Hood River zoning code for details. Access to parking from adjacent pay parking lot.

Additional Information: Benefit from high traffic and exposure due to popular concert and event venue in adjacent space. Located in east end of downtown Hood River and walking distance to all that historic Hood River has to offer. Easy access to I-84 and Hwy 35.



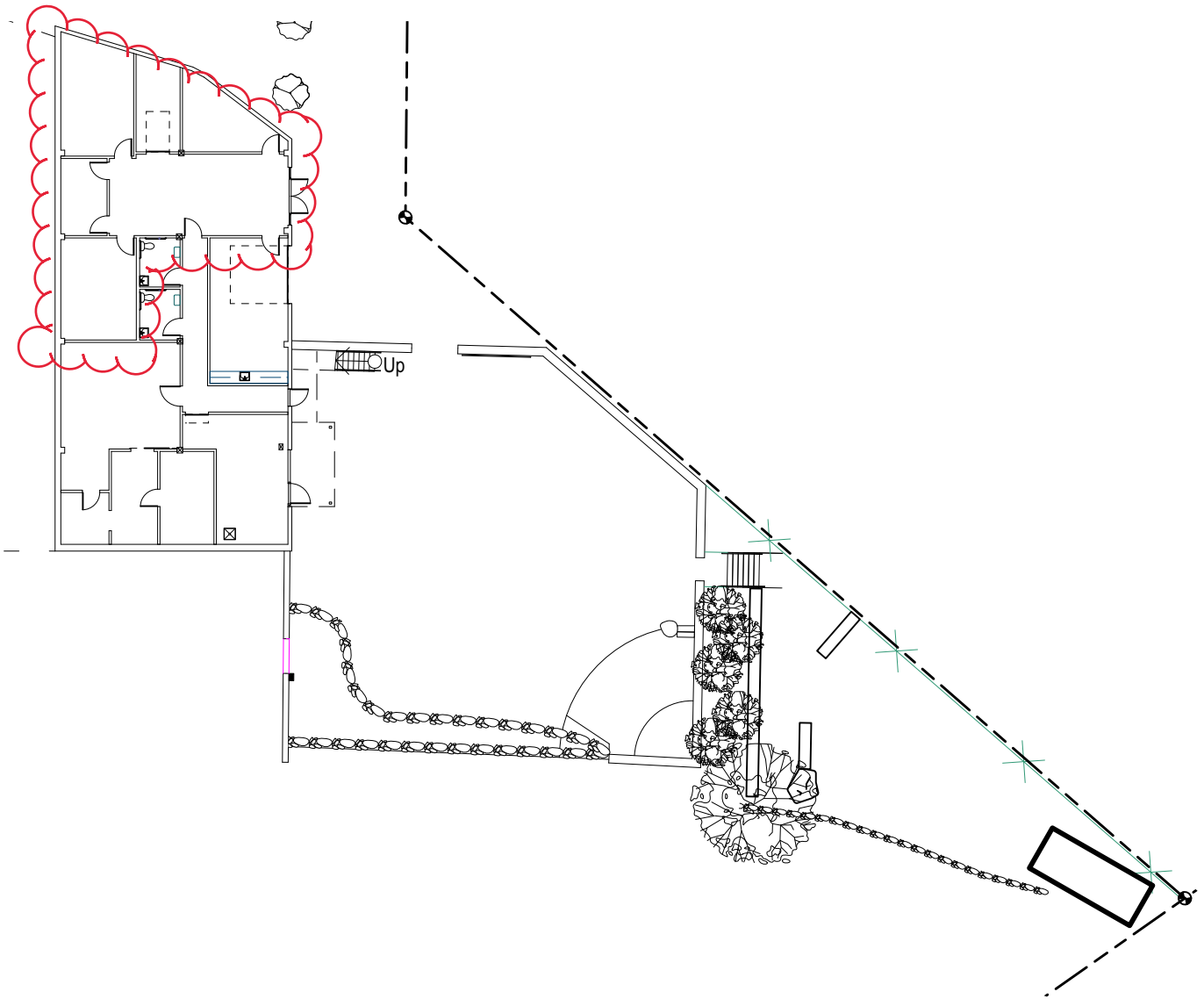
GROUNDSWELL
DEVELOPMENT

Please call to arrange a tour:
On Site Contact:

Gabe Genauer **971-221-5747**
Carrington Barrs **503-704-8133**

gabe@groundswelldevelopment.com
cebalaro@gmail.com

X SF

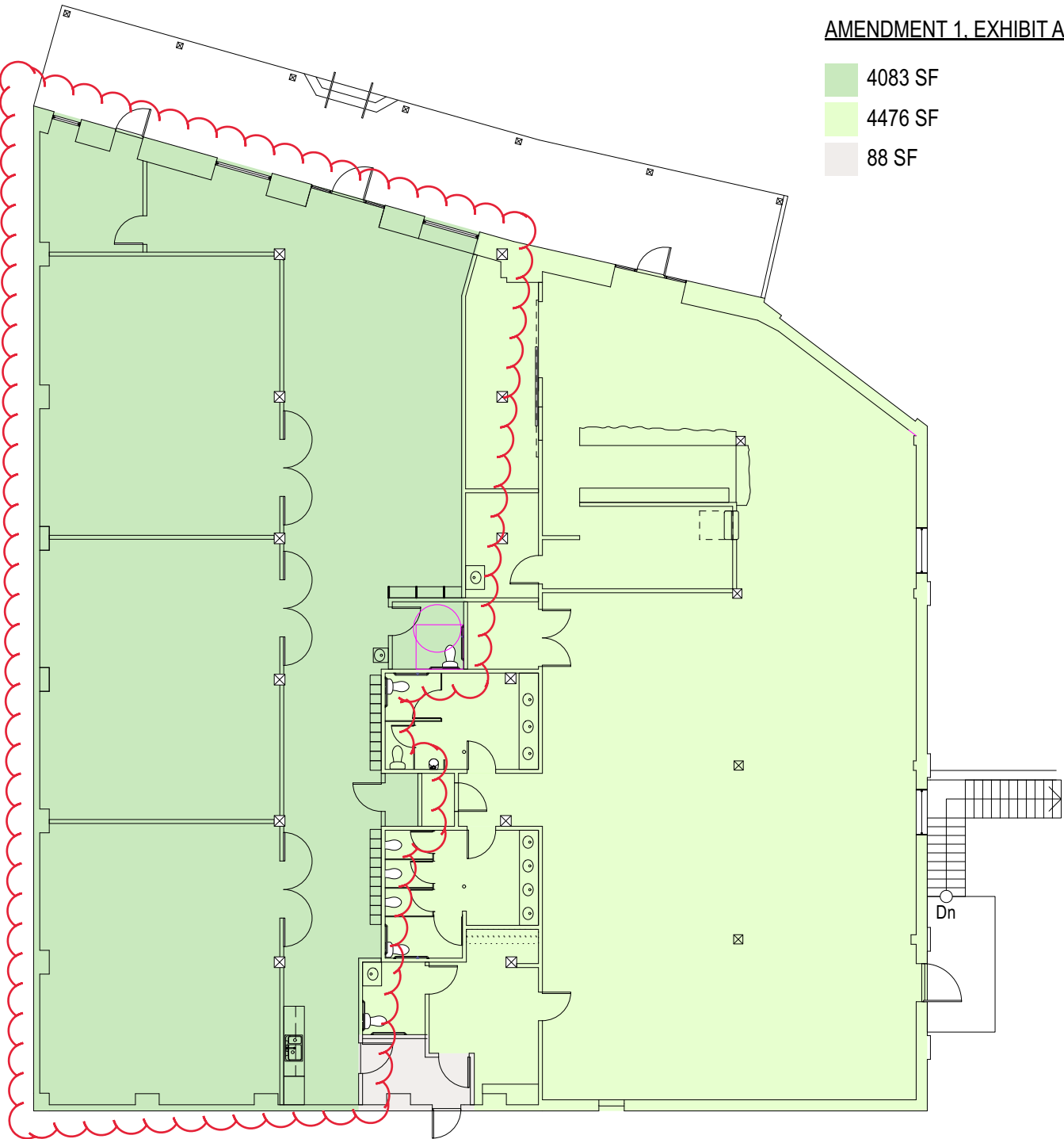


3

Site Plan
Scale: 1:350



- 4083 SF
- 4476 SF
- 88 SF

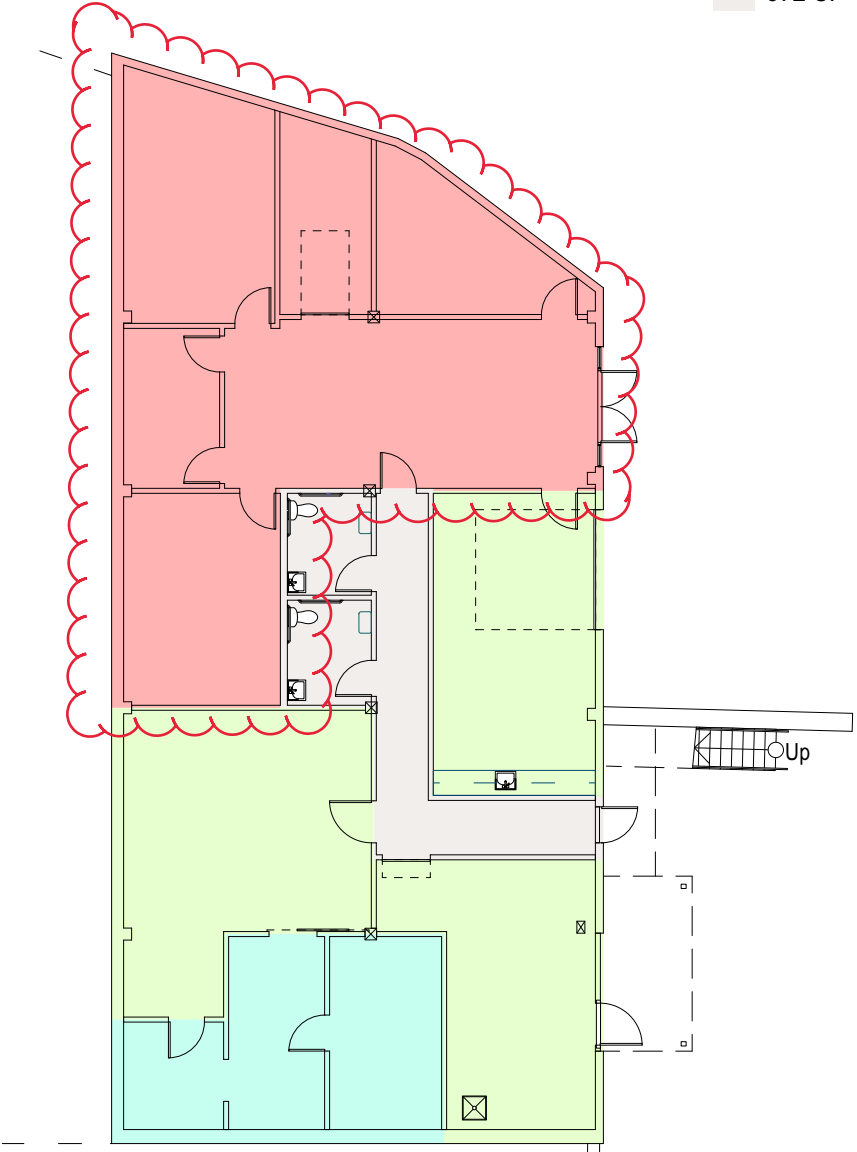


2

Main Floor Plan
Scale: 1/16" = 1'-0"



- 1437 SF
- 416 SF
- 1190 SF
- 372 SF



1 Lower Floor Plan
Scale: 1/16" = 1'-0"

