

OFFICE SUITE

Approx 1,518 sf
For Lease

35 Highland Circle, Suite 306,
Needham, MA



S P A C E F O R L E A S E

AVAILABLE (APPROX SF):

1,518 sf

USES:

Office

FOR LEASE:

Asking: \$25/sf + expenses

NEARBY TENANTS:

Panera Bread, Staples, petco, Speedway, Spiga, Sheraton Boston Needham Hotel, Mandarin Cuisine, and much more.

LOCATION:

35 Highland Circle is conveniently located minutes away from Route 95/128.

SUMMARY:

Professional office suite with 5 private offices, reception area, conference room, and kitchenette for lease in Needham. Elevator building with parking. Formerly used as an attorney's office. Conveniently located to Route 95/128, as well as nearby shops and businesses. Call for more information!

The information contained herein has been obtained through sources deemed reliable by JMJ Commercial Realty, Inc., but cannot be guaranteed for its accuracy. We recommend to the tenant that any information, which is of special interest, should be obtained through independent verification.

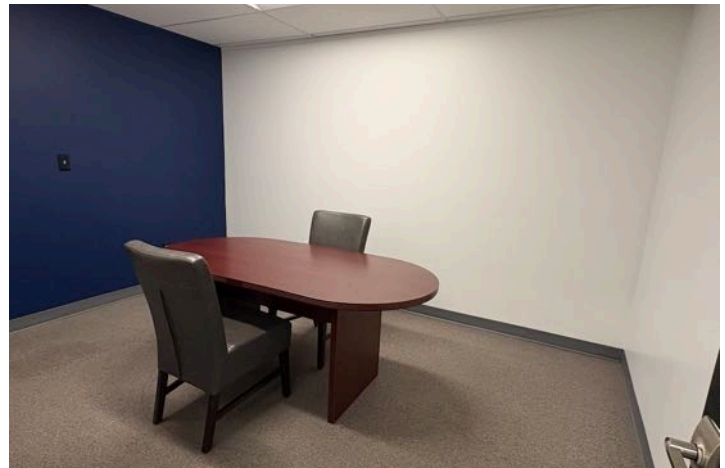
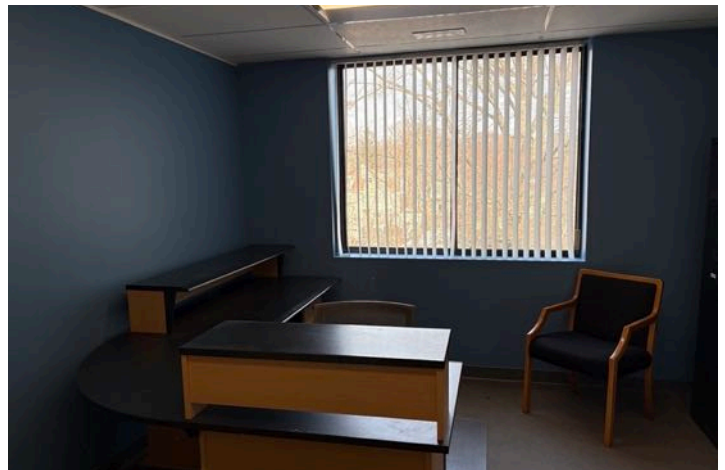
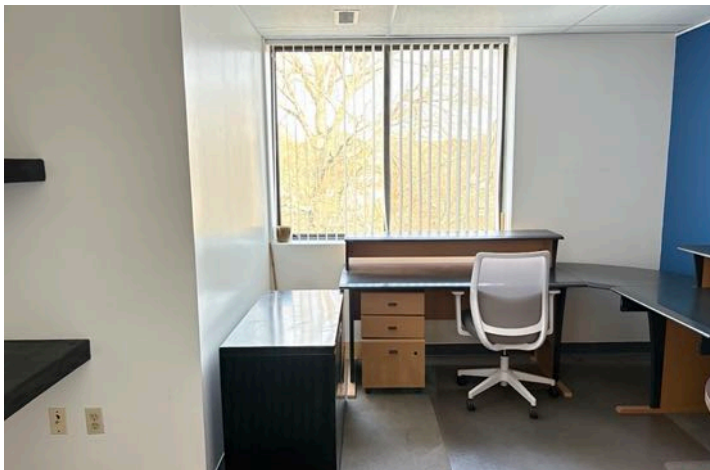


JMJ Commercial Realty
935 Great Plain Avenue #261
Needham, MA 02492
www.jmj-cre.com

Josh Seadia
Principal
617-605-5674
josh@jmj-cre.com

Office Suite for Lease - 35 Highland Circle, Suite 306, Needham MA 02494

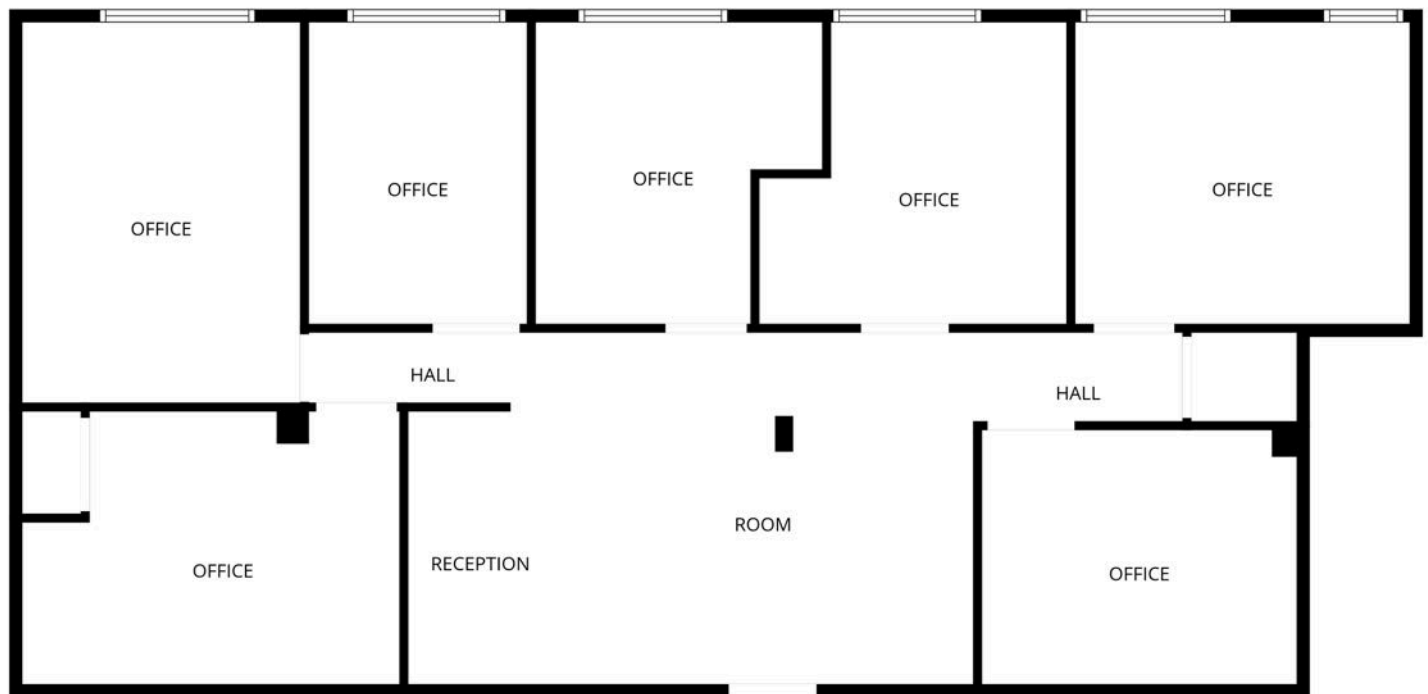
PROPERTY PHOTOS



JMJ Commercial Realty
935 Great Plain Avenue #261
Needham, MA 02492
www.jmj-cre.com

Josh Seadia
Principal
617-605-5674
josh@jmj-cre.com

SUITE 306 - FLOOR PLAN - APPROX 1,518 SF



FLOOR PLAN CREATED BY CUBICASA APP. MEASUREMENTS DEEMED HIGHLY RELIABLE BUT NOT GUARANTEED.

The information contained herein has been obtained through sources deemed reliable by JMJ Commercial Realty, Inc., but cannot be guaranteed for its accuracy. We recommend to the tenant that any information, which is of special interest, should be obtained through independent verification.



JMJ Commercial Realty
935 Great Plain Avenue #261
Needham, MA 02492
www.jmj-cre.com

Josh Seadia
Principal
617-605-5674
josh@jmj-cre.com