



**±6,600 SF Industrial Facility on ±0.68 Acres**

**1171 N. Highway 25 | Travelers Rest, SC**



# Investment Summary



**Offering Price: \$995,000**

## Location



1171 North Highway 25  
Travelers Rest, SC  
29690

## Zoning



**Unzoned**  
(Opportunity Zone)

## Building SF



**±6,600**  
Square Feet

## Tax Map ID



**0504010103114**

## Year Built



**2008**

## Land



**±0.68**  
Total Acres



**1171 N. Highway 25 | Travelers Rest, SC**



# Executive Summary

Aline Capital's Industrial Division is proud to announce the offering of a ±6,600 SF industrial facility that meets all applicable FDA regulations and OTC (Over-the-Counter) requirements. With prime Highway 25 frontage in Travelers Rest, Greenville County, SC, and situated in an Opportunity Zone, the building combines a ±380 SF office with high-quality lab, production, and processing areas. It is fully conditioned with robust HVAC and exceptional insulation, supported by heavy-power electrical infrastructure.

The layout features five (5) drive-in doors, 12' clear height, laydown yard, and ample parking—delivering GMC-ready, regulation-compliant functionality for daily operations. This multi-purpose, turnkey asset is ideal for companies seeking immediate occupancy and long-term growth in a business-friendly submarket.

**PLEASE NOTE:** For Buyers seeking a more traditional warehouse layout, Rescom Construction has assisted in quoting the demo/removal of the production space with an estimated 4-week turnaround.



**1171 N. Highway 25 | Travelers Rest, SC**



# Investment Highlights

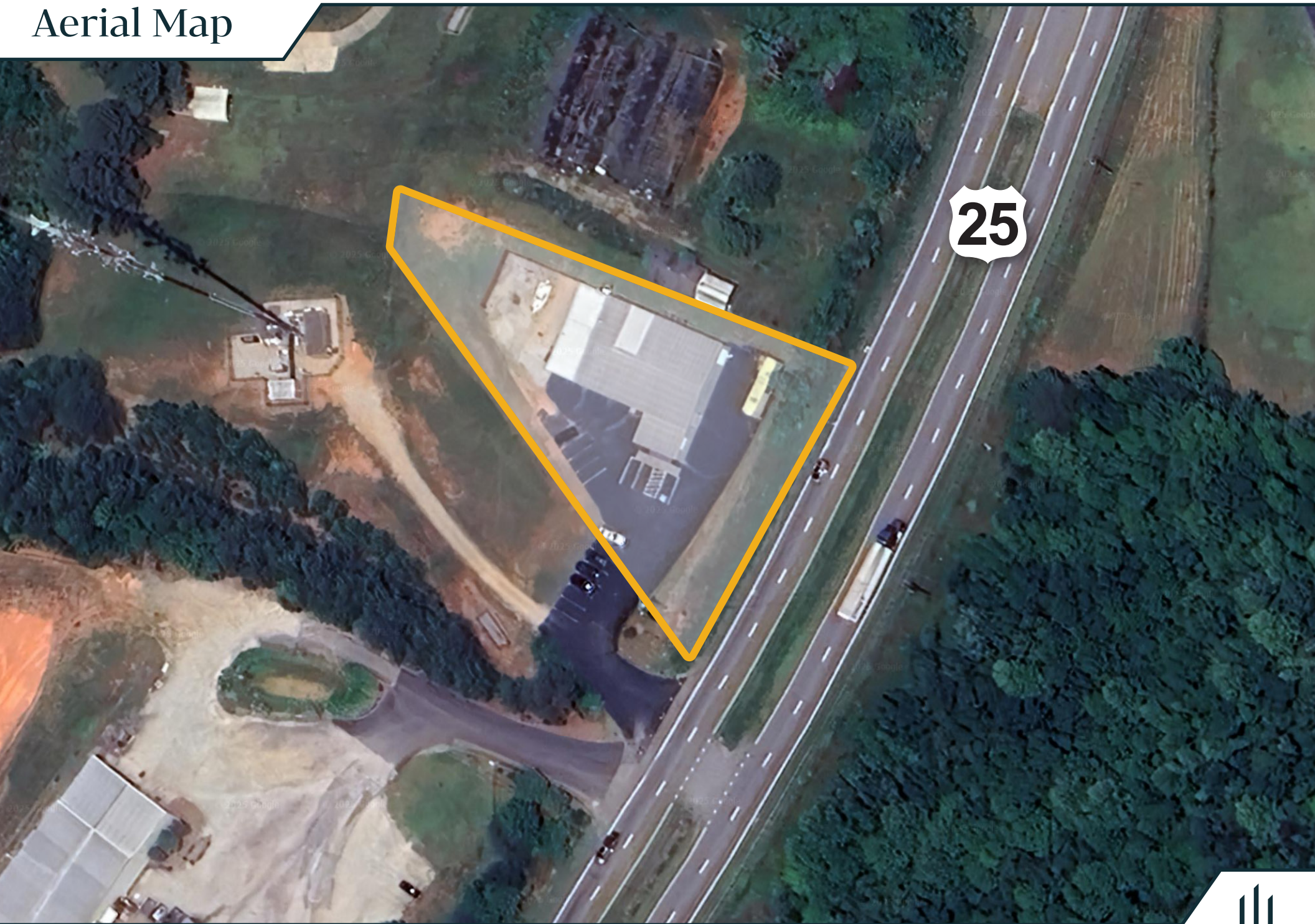
- Front Office Area (±380 SF)
- High-Quality, GMC-compliant Lab/Production/Processing Space
- Meets All Applicable FDA Regulations & OTC (Over-the-Counter) Requirements
- Fully Conditioned Facility w/ Exceptional Insulation
- Heavy-Power Electrical Infrastructure
- Five (5) Drive-In Doors
- 12' Clear Height
- Laydown Yard
- Ample Parking
- Located in Opportunity Zone



**1171 N. Highway 25 | Travelers Rest, SC**



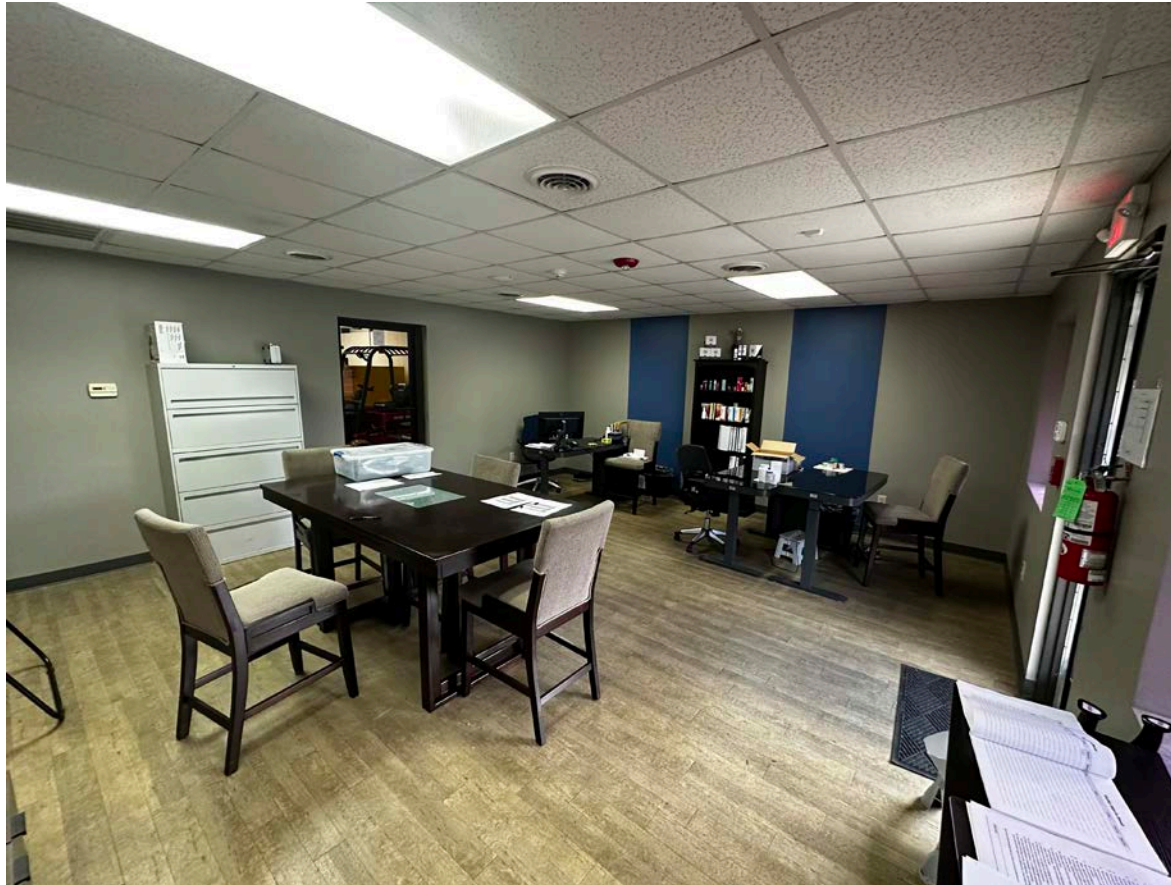
# Aerial Map



**1171 N. Highway 25 | Travelers Rest, SC**



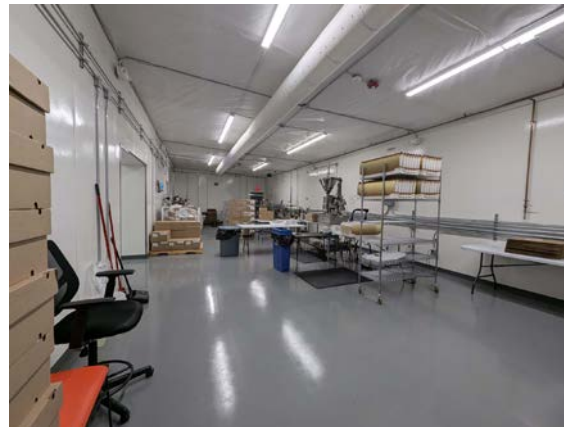
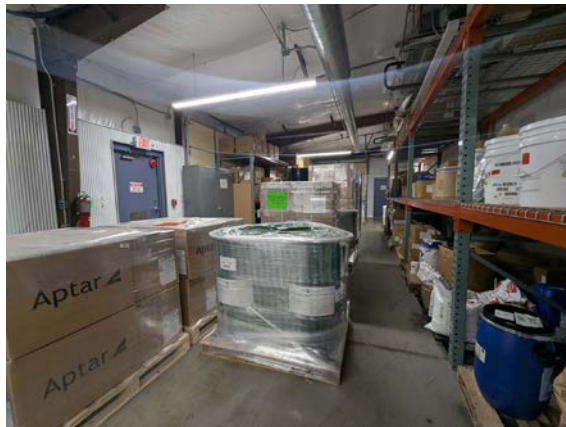
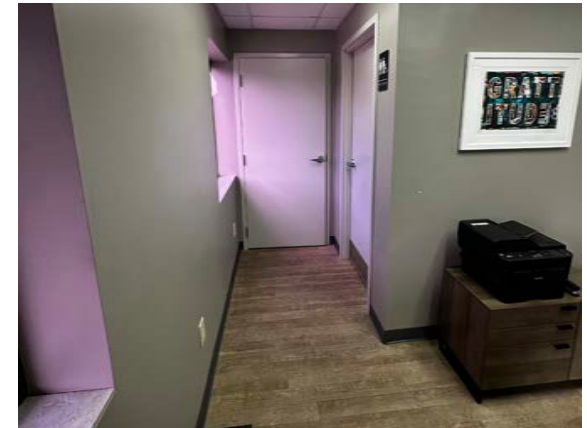
# Additional Images



**1171 N. Highway 25 | Travelers Rest, SC**



# Additional Images



**1171 N. Highway 25 | Travelers Rest, SC**



# Area Map



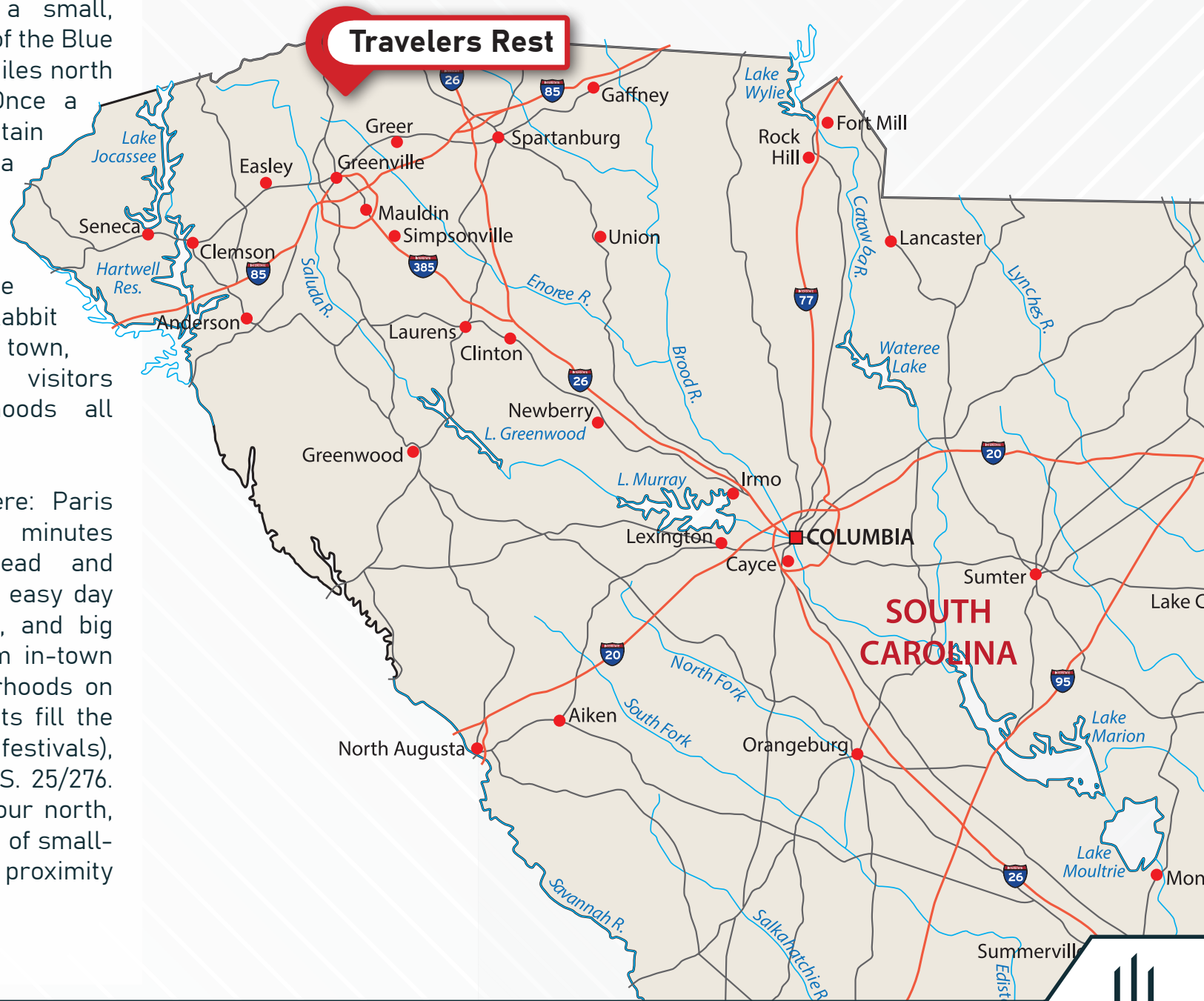
**1171 N. Highway 25 | Travelers Rest, SC**



# Location Summary

Travelers Rest ("TR") is a small, outdoorsy town at the base of the Blue Ridge Mountains, about 10 miles north of downtown Greenville. Once a historic stopover for mountain travelers, it's evolved into a lively hub with a walkable Main Street, local boutiques, coffee shops, and a growing food-and-brewery scene. The Prisma Health Swamp Rabbit Trail threads right through town, connecting residents and visitors to parks and neighborhoods all the way to Greenville.

Nature is the headline here: Paris Mountain State Park is minutes away, while Caesars Head and Table Rock State Parks are easy day trips for hiking, waterfalls, and big views. Housing ranges from in-town cottages to newer neighborhoods on the edges, community events fill the calendar (farmers markets, festivals), and access is simple via U.S. 25/276. Asheville sits roughly an hour north, giving TR a convenient blend of small-town feel, trail access, and proximity to larger cultural amenities.



**1171 N. Highway 25 | Travelers Rest, SC**



# Area Highlights

## Greenville SC – A Manufacturing Juggernaut

The Greenville-Spartanburg region, also known as South Carolina's Upstate, is the state's largest consolidated metro area with a population in the 10-county region exceeding 1.6 million as of the end of 2023. The Upstate is also the state's manufacturing hub, with prominent companies such as BMW, Michelin, Lockheed Martin, GE, and Milliken calling the Upstate home. For this reason, the Upstate's manufacturing and distribution sector often garners more national attention than other sectors. As the market becomes an increasingly important regional center, however, office-using sectors such as financial services and professional services have also grown, as have administrative offices for the many logistics and manufacturing companies here.

## Greenville County – Population/Job Growth:

Like many tertiary markets in the Southeast, Greenville has seen strong job and population growth since 2020. Total payroll jobs have increased by more than 12% over the past four years. While this job growth has kept office vacancies here below the national average, the area has not been immune from broader shifts in office use and a slowdown in office-using hiring. According to the Upstate Alliance, the unemployment rate in the Upstate region was at 5.0% as of July 2024. Additionally, approximately 13% of the workforce in the Upstate region is employed in Professional & Business Services sector, which is the primary user of office space. However, that number jumps to nearly 45% in the City of Greer.

## Office Leasing & Sales in Greenville County / Travelers Rest Submarket

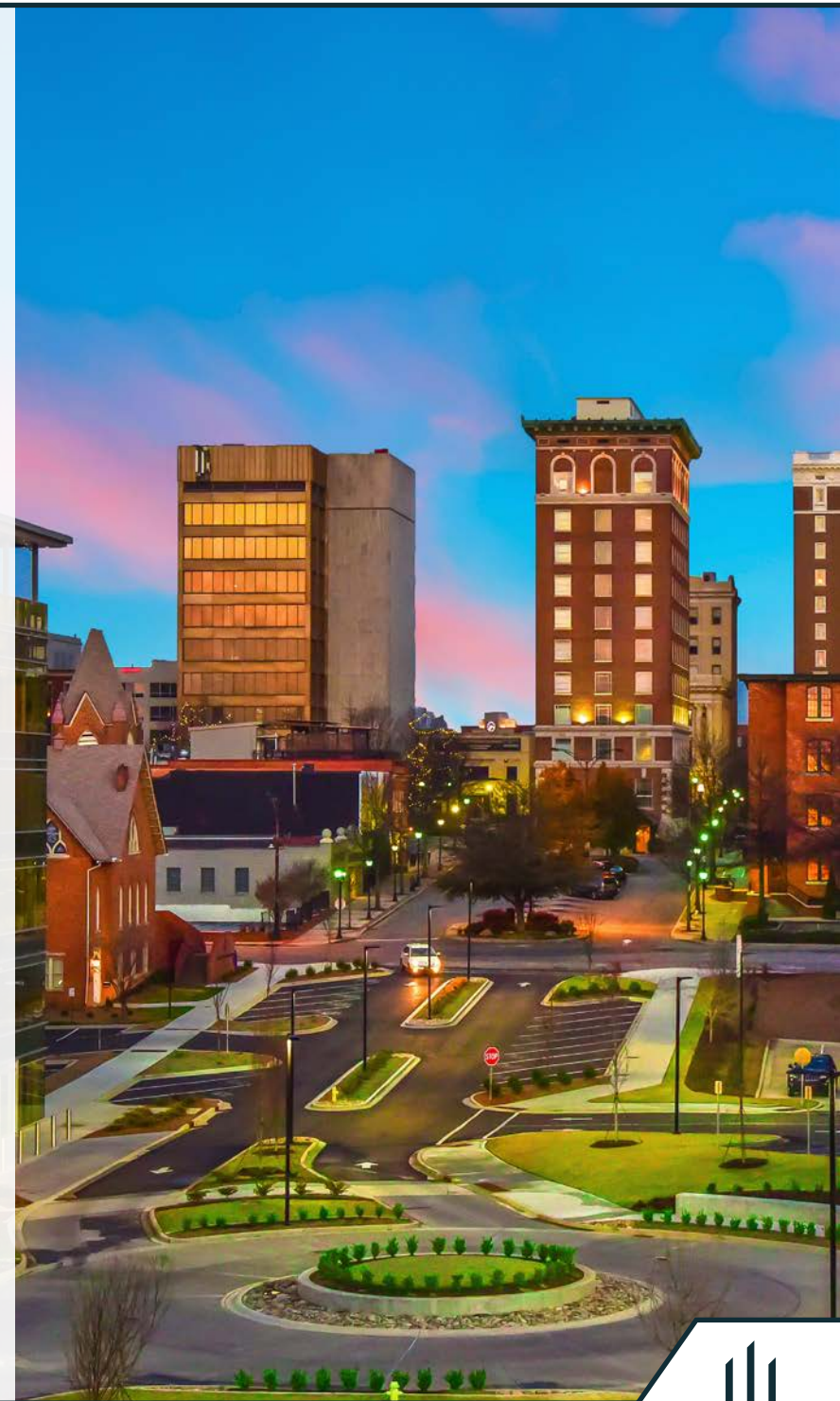
With job and population growth, a focus on small to midsize office tenants who were more likely to maintain office presence during the coronavirus downturn, and relatively limited new speculative supply, Greenville County's office market has maintained vacancy rates lower than the national average, at roughly 8.3%, heading into the final stretch of 2024. The Travelers Rest office submarket has a vacancy rate of 11.6% as of the fourth quarter of 2024, which compares favorably to the submarket's five-year average of 9.6% and the 10-year average of 12.3%. Over the past year, 82,000 SF of office inventory traded in the Travelers Rest area across 21 sales. Office sales volume in Travelers Rest has totaled \$9.1 million over the past year. Average annual sales volume over the past five years is \$9.1 million and \$8.2 million over the past 10 years.

## Top Companies in the Travelers Rest Area:



**BENORE**  
LOGISTIC SYSTEMS, INC.

**Honeywell**

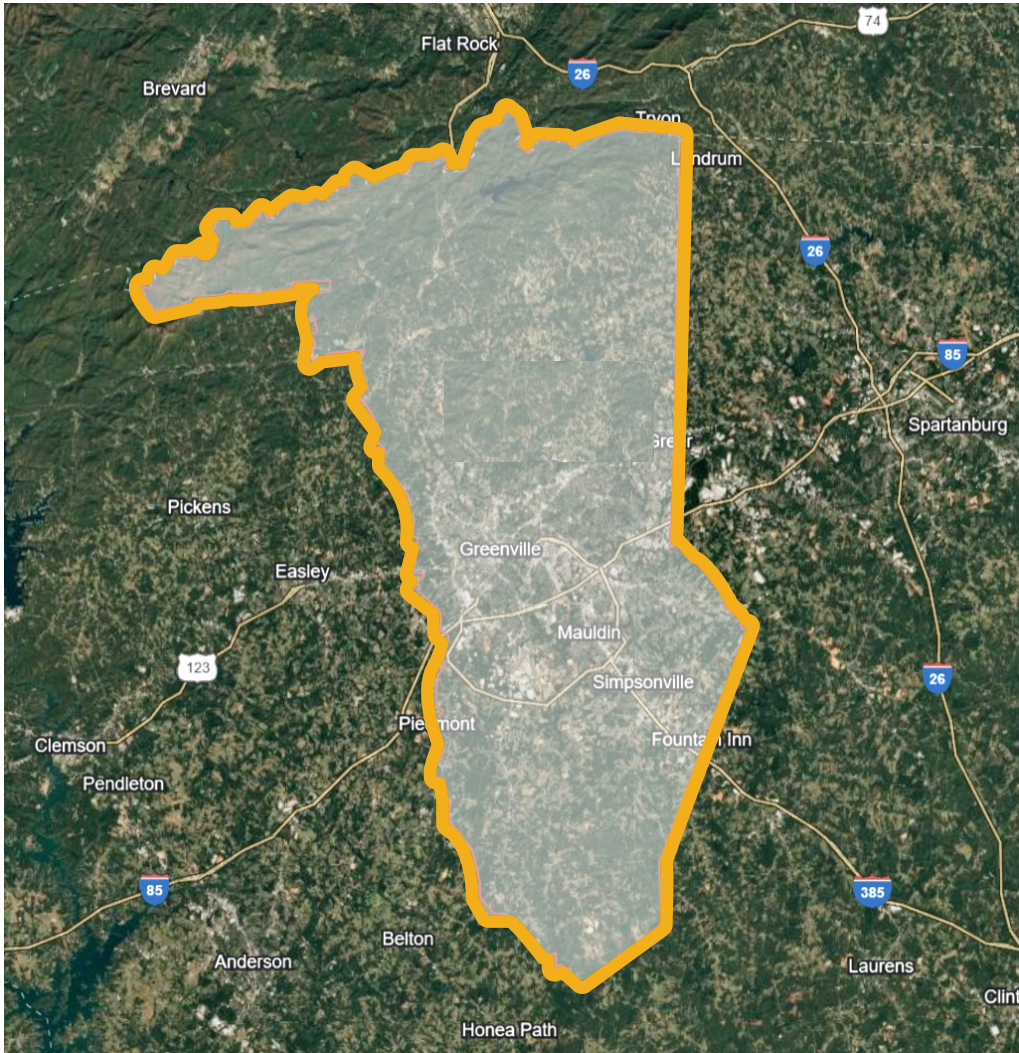


**1171 N. Highway 25 | Travelers Rest, SC**



# Demographics

Radius	1 mile	5 Mile	10 Mile
Population			
2023 Population	5,182	102,858	342,960
2028 Population Projection	5,083	102,997	346,727
Households			
2023 Households	2,298	42,018	140,307
2028 Household Projections	2,258	42,117	141,972
Annual Growth 2023-2028	-1.7%	0.2%	1.2%
Income			
Average Household Income	\$59,772	\$75,643	\$78,796



342,960

Residents within 10 Miles

140,307

Households within 10 Miles

\$78,796

Average Household Income

1171 N. Highway 25 | Travelers Rest, SC





Exclusively Marketed By:



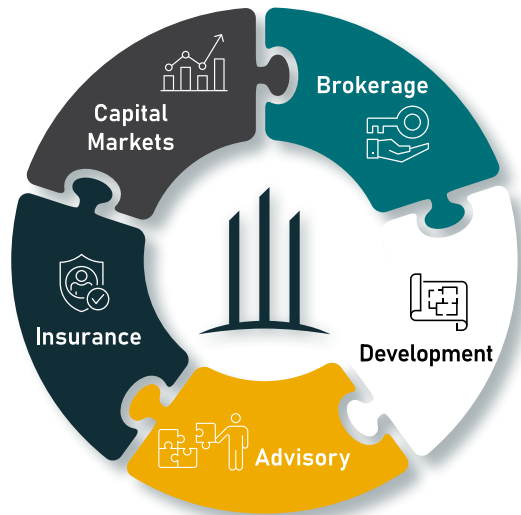
Sam Faulkenberry  
Senior Advisor | Industrial Division  
864.608.0143 | [sfaulkenberry@alinecapital.com](mailto:sfaulkenberry@alinecapital.com)

**1171 N. Highway 25 | Travelers Rest, SC**





## The Aline Ecosuite™ A Revolution in Commercial Real Estate



Aline Capital has developed a revolutionary Commercial Real Estate ecosystem that sets us apart from traditional brokerages. With Aline, you get so much more than just a broker. On top of our industry-leading brokerage services, we offer cutting-edge capital markets services, professional advisory, experienced insurance services, full-spectrum property development, and project management, all under one roof.

Our ecosystem is designed to advocate on the side of real estate investors or sellers, and provide them with a trustworthy and even-handed resource to ensure that they receive service on a level that was previously impossible. Experience a new level of service in commercial real estate by contacting us at [alinecapital.com](http://alinecapital.com).

## Debt and Equity Options

As an independent advisor we look at the entire market to ensure you are getting the best solution to help you achieve your end goal.



**Analyze**



**Advise**



**Negotiate**



JD Lehman  
Director  
Capital Markets Division  
843.473.9631  
[jdlehman@alinecapital.com](mailto:jdlehman@alinecapital.com)

## Insurance Options

With our investment expertise, our trusted Advisors are able to offer a unique insurance experience with each acquisition.



**Risk  
Review**



**Annual  
Review**



**Customized  
Package**



Sammy Lortz  
Managing Dir. of Operations  
Insurance Division  
864.238.3127  
[slortz@alinecapital.com](mailto:slortz@alinecapital.com)



# Disclaimer & Disclosure

This Offering Memorandum does not constitute an offer to sell the Property. Neither any Potential Purchaser nor Seller will be bound to a contract of sale unless and until both parties sign and deliver it. Seller reserves the right at any time, in its sole discretion and without notice to any person, to: (a) change any of the terms of the potential sale of the Property; (b) withdraw the Property from the market; (c) accept or reject any offers; (d) terminate discussions with any Potential Purchaser; or (e) sell all or any portion of the Property to any other person. No liability will attach to the undersigned, Seller or any other party for failure to receive, review or respond to any offer or for any other matter in connection therewith. While any information contained in this flyer is derived from sources that are believed to be reliable, neither the undersigned nor Seller can or does guarantee that such information is accurate, and that information is provided without representation or warranty.

Prospective Purchasers should consult legal counsel with respect to the zoning and development potential of the Property, and with other consultants of Potential Purchaser's choice with regard to all aspects of the Property, including without limitation its physical and legal condition, the presence or absence of hazardous materials, its compliance with the Americans With Disabilities Act, and other matters that may affect its value, desirability and/or utility. Unless otherwise agreed in writing by Seller and its broker, (a) Prospective Purchaser's broker shall look solely to its client for the payment of any real estate commission, fee or other compensation for that broker's services, and (b) Seller and its broker shall not be liable for the payment of any such real estate commission, fee or other compensation.

©2025 All real estate brokerage activities of Aline Capital are conducted under ACIRE, LLC. While any information contained in this package is derived from sources that are believed to be reliable, the undersigned does not guarantee that such information is accurate, and that information is provided without representation or warranty.



**1171 N. Highway 25 | Travelers Rest, SC**