

ROSE GARDEN SQUARE INDUSTRIAL PARK CONDOMINIUM

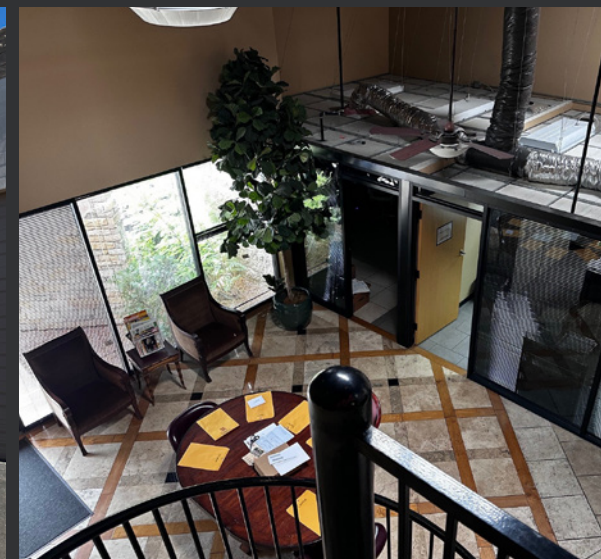
*A ±2,825 SF, High-End Office/
Warehouse Condo in Phoenix,
Arizona for Sale.*

20819 N 25TH PLACE, UNIT B103

ERIC BELL, SIOR
Executive Vice President
602.513.5151
eric.bell@kidder.com

MIKE CIOSEK, SIOR
Executive Vice President
602.513.5135
mike.ciosek@kidder.com

KIDDER.COM





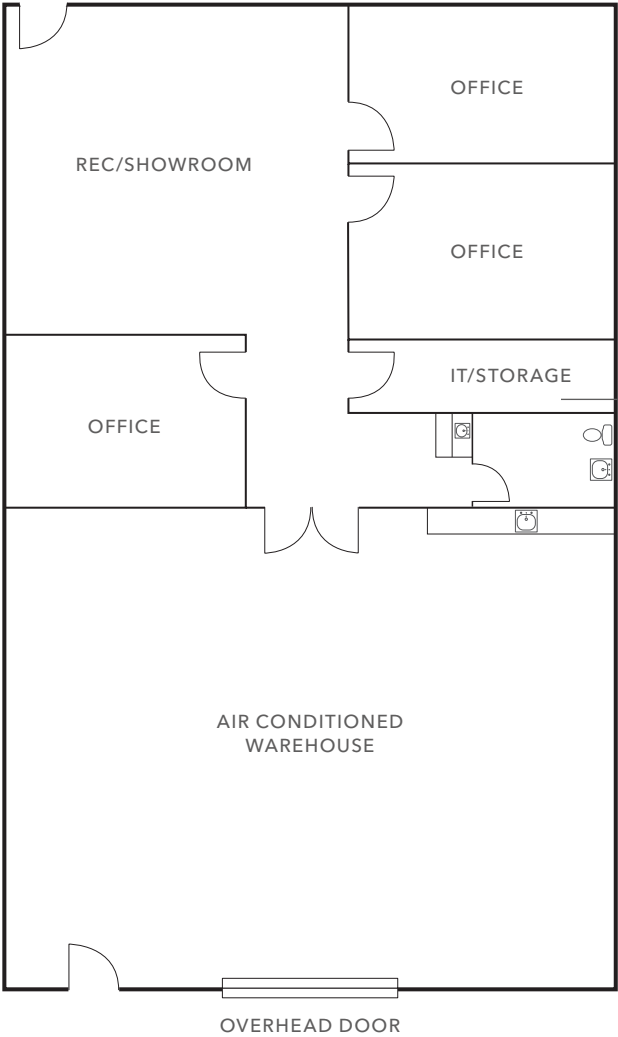
20819 N 25th Place, Unit B103 is a 100% air conditioned office/warehouse condominium that has been improved with high-end office finishes and features an upstairs office/bullpen.

FEATURES

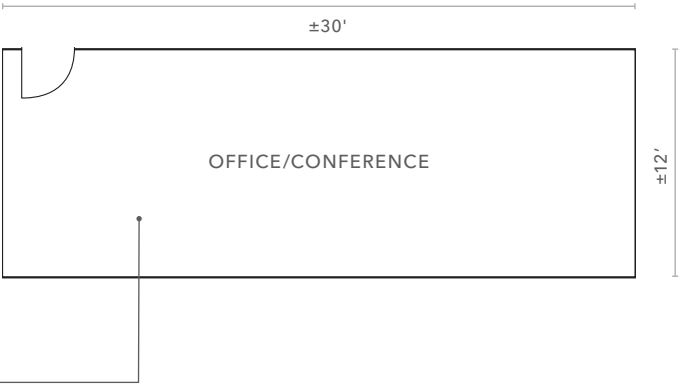
AVAILABLE	±2,825 SF total
OFFICE	±1,600 SF
LOADING	1 (12' x 14') Grade level door
POWER	200 amps, 120/208 volt, 3-phase
CLEAR HEIGHT	16'
AIR CONDITIONED	100%
ZONING	CP/GCP, City of Phoenix
ACCESS	Immediate access to Loop 101
APN	213-11-147
UNIT HIGHLIGHTS	Four private offices, one restroom, kitchenette, reception/showroom area, and copy/file storage
SALE PRICE	Contact Broker

FLOOR PLAN

FIRST FLOOR



SECOND FLOOR



±2,825 SF

AVAILABLE

CONTACT
BROKER

SALE PRICE



For more information, contact

ERIC BELL, SIOR
Executive Vice President
602.513.5151
eric.bell@kidder.com

MIKE CIOSEK, SIOR
Executive Vice President
602.513.5135
mike.ciosek@kidder.com

KIDDER.COM

This information supplied herein is from sources we deem reliable. It is provided without any representation, warranty, or guarantee, expressed or implied as to its accuracy. Prospective Buyer or Tenant should conduct an independent investigation and verification of all matters deemed to be material, including, but not limited to, statements of income and expenses. Consult your attorney, accountant, or other professional advisor. All Kidder Mathews designs are the sole property of Kidder Mathews. Branded materials and layouts are not authorized for use by any other firm or person.

