

CLAYTON, NC

NC-42 E & MOTORCYCLE RD

±0.8 AC - ±1.9 AC AVAILABLE IN PLANNED MIXED-USE DEVELOPMENT



PROJECT DETAILS

NC-42 E & MOTORCYCLE RD • ±0.8 AC - ±1.9 AC AVAILABLE IN PLANNED MIXED-USE DEVELOPMENT • LAND

AVAILABLE SPACE

±0.8 - ±1.9 Acres

TRAFFIC COUNTS

17,200 ADT on NC-42 E

PROPERTY HIGHLIGHTS

- Planned mixed use development with opportunity for c-store, financial institution, medical, coffee, and restaurant
- GL, BTS, or multi-tenant retail available
- Proximity to Flowers Crossroads, a 3,000 acre mixed-use PUD with 8,000 homesites and 40+ neighborhoods
- Located in Johnston County - site is not a part of a PUD
- Area retailers include Publix, Harris Teeter, Petco among others

LEASE RATE

Call to discuss

COUNTY

Johnston

MARKET

Clayton



DEMOGRAPHICS

TOTAL HOUSEHOLDS

1 MILE

3 MILES

5 MILES

1,846

11,083

18,171



TOTAL POPULATION

5,768

32,512

52,284

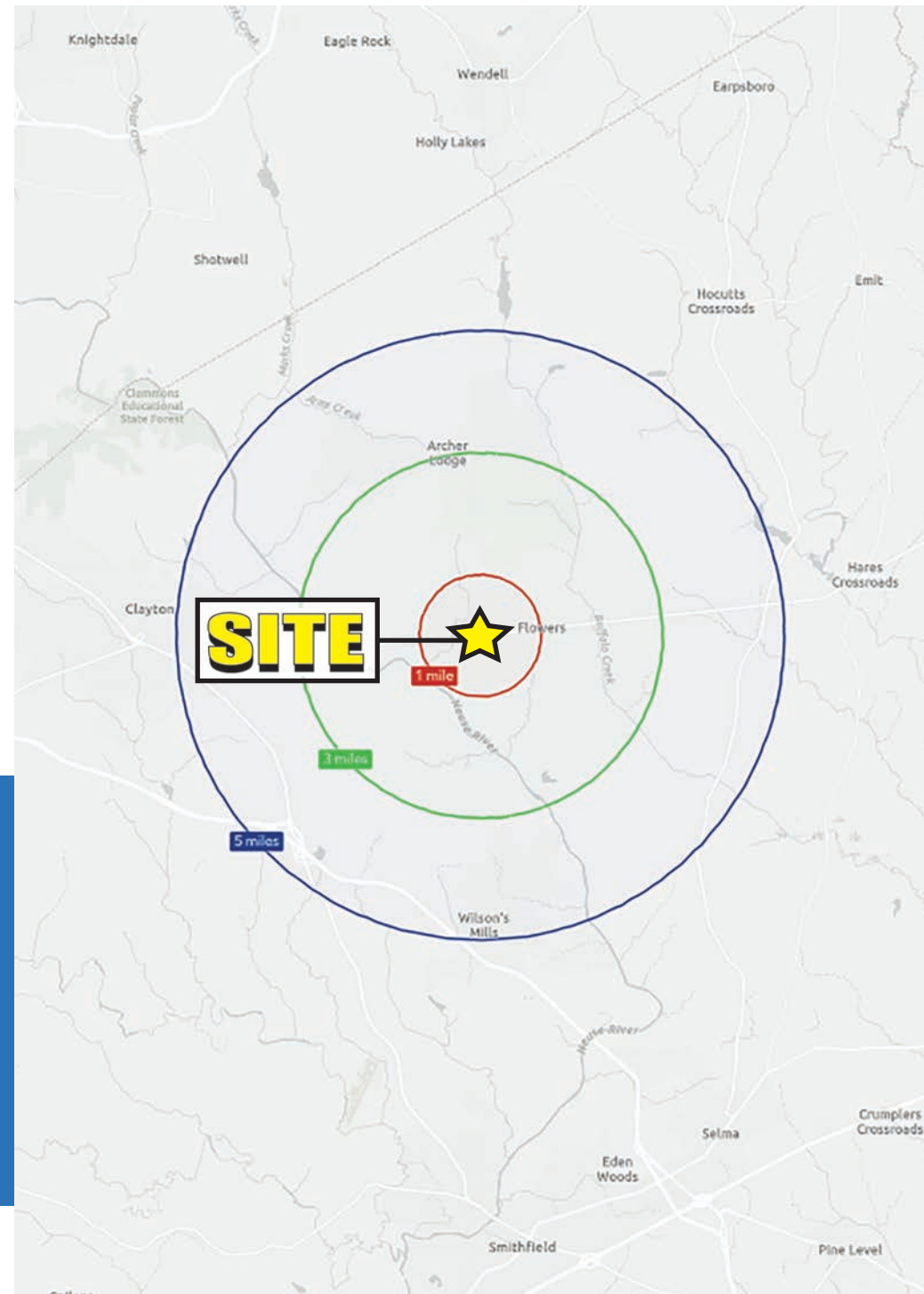


MEDIAN HH INCOME

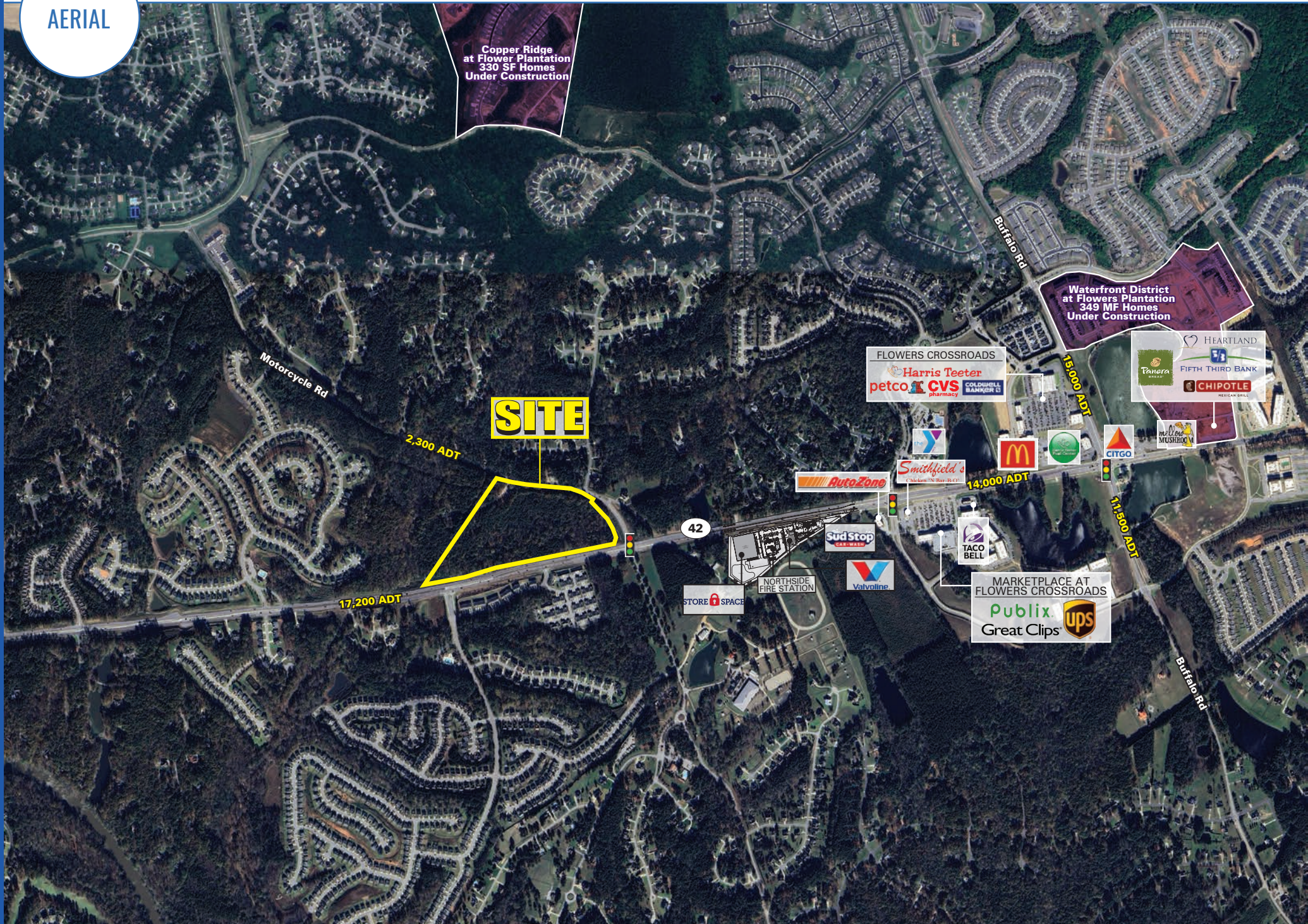
\$133,198

\$119,590

\$108,278

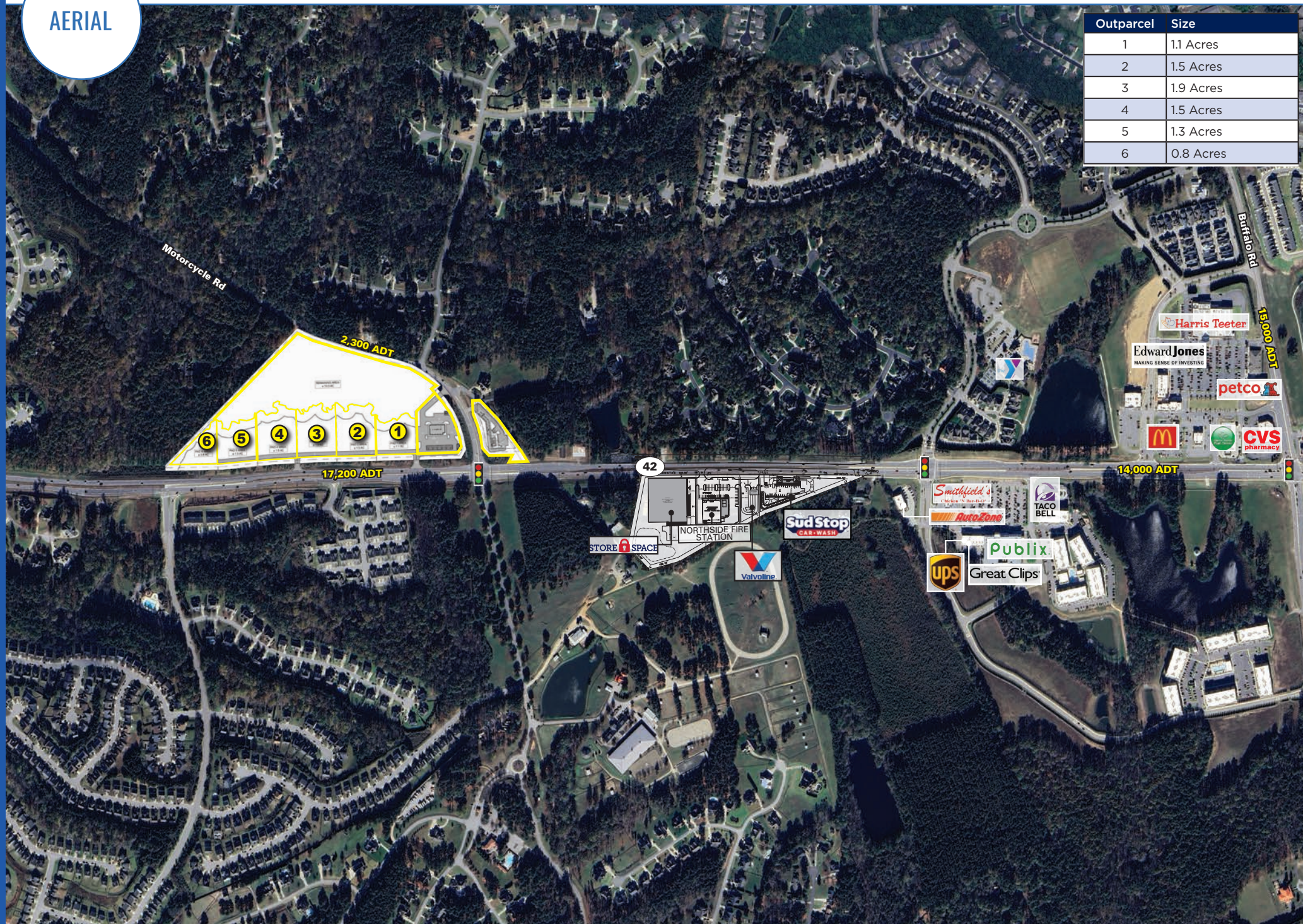


AERIAL



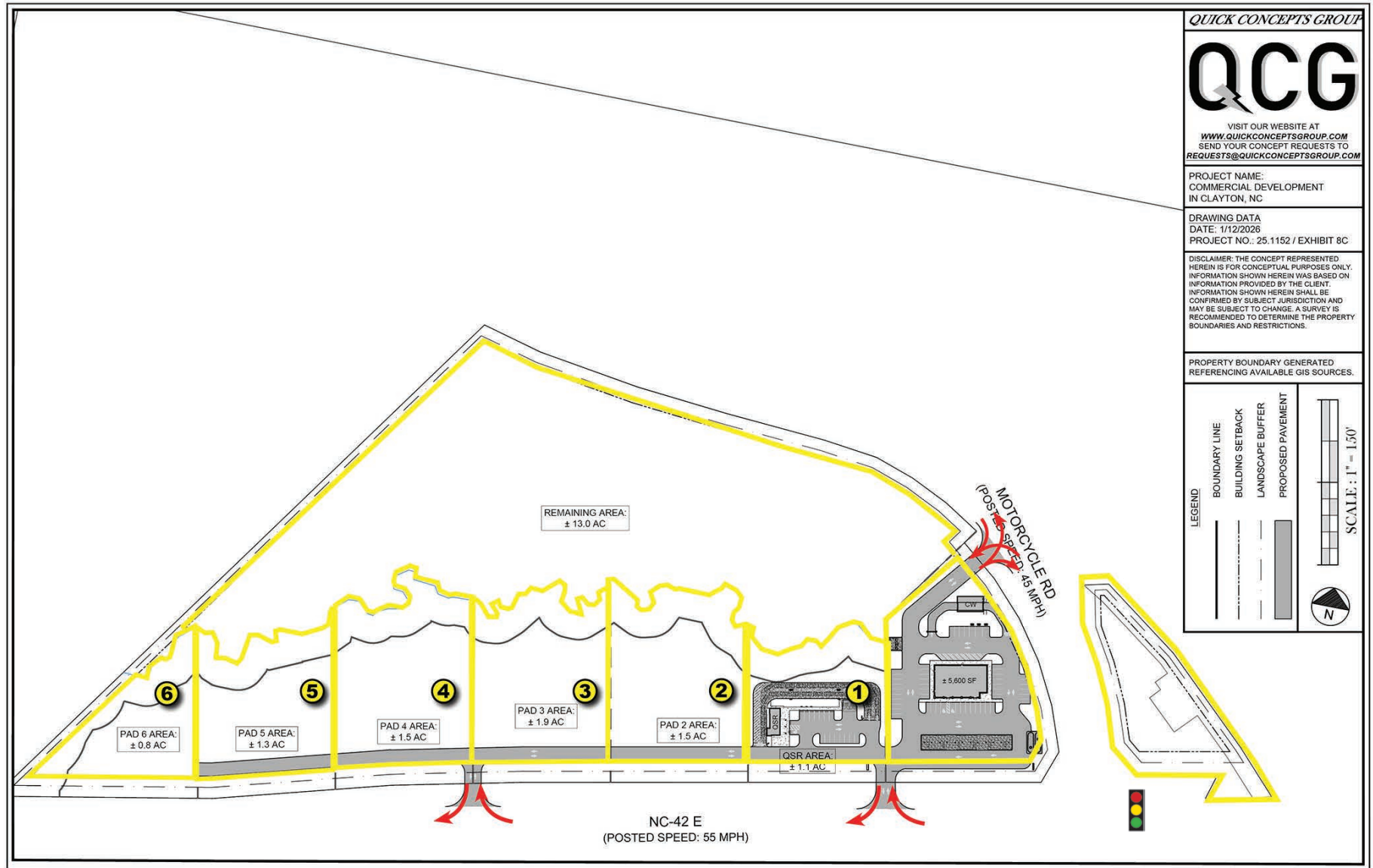
AERIAL

Outparcel	Size
1	1.1 Acres
2	1.5 Acres
3	1.9 Acres
4	1.5 Acres
5	1.3 Acres
6	0.8 Acres



SITE PLAN

NC-42 E & MOTORCYCLE RD • ±0.8 AC - ±1.9 AC AVAILABLE IN PLANNED MIXED-USE DEVELOPMENT • LAND





NORTH CAROLINA

CLAYTON

Considered the #1 Place to Live in Johnston County, Clayton is one of the best places to live in North Carolina. Located close to Raleigh, living in Clayton will provide residents with a small suburban feel while having easy access to the hustle and bustle of city life in the state's capital. Since more and more people are deciding to move to North Carolina due to employment opportunities and desirable quality of life, Clayton is a good place to call home for all ages. If you're shopping for homes for sale in Raleigh, you'll find there are a lot of great houses in Clayton as well, with large lots and a bit less expensive.

Only a 25-minute drive away from Downtown Raleigh and a 35-minute drive away from the rest of Research Triangle Park, Clayton is in the perfect centralized location. Near Interstate 40, Interstate 95, Interstate 540, and US 70, living close to these major highways makes Clayton a top choice for living in regards to commuting time and accessibility to work. A hidden gem, the city of Clayton is for anyone who wants to experience small-town living close to a busy city center. Plus, only a 40-minute drive from the Raleigh-Durham International Airport (RDU) means simple and painless traveling to your next vacation and weekend getaway. Not to mention, Clayton



CLAYTON, NC

NC-42 E & MOTORCYCLE RD

**±0.8 AC - ±1.9 AC AVAILABLE
IN PLANNED MIXED-USE DEVELOPMENT**

MICAH GROEBER

704.697.1902
MGROEBER@ATLANTICRETAIL.COM

ROBEY SPRATT

704.697.1901
RSPRATT@ATLANTICRETAIL.COM



WWW.ATLANTICRETAIL.COM

 [LINKEDIN.COM/COMPANY/ATLANTIC-RETAIL-PROPERTIES](https://www.linkedin.com/company/atlantic-retail-properties)
 [INSTAGRAM.COM/ATLANTIC_RETAIL/](https://www.instagram.com/atlantic_retail/)

 **REALTYPARTNERS**  **CHAINLINKS**
RETAIL ADVISORS

ALBANY

ATLANTA

BOSTON

WEST PALM BEACH

LOS ANGELES

NEW YORK CITY

ORLANDO

PITTSBURGH

CHARLOTTE

THREE MORROCROFT CENTRE
CHARLOTTE, NC 28211
704.697.1900