

FOR LEASE

5611 S 24th Street, Phoenix, AZ

±9,828 SF | Freestanding Industrial Building with Yard



WILL GROVES
Director
+ 1 602 682 8260
will.groves@cushwake.com

JOHN POMPAY
Senior Director
+ 1 602 224 4422
john.pompay@cushwake.com



// BUILDING SPECS

BUILDING SIZE

±9,828 SF

OFFICE SIZE

±1,900 SF

CLEAR HEIGHT

14'

POWER

600 AMPS 120/208V

GRADE LEVEL DOORS (EXTRA LARGE)

FOUR

ZONING

IND PK, CITY OF PHOENIX

YEAR BUILT

1987

YARD

FENCED/SECURE

AVAILABLE

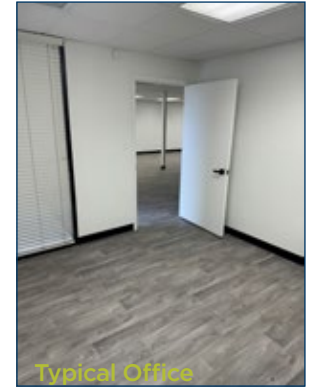
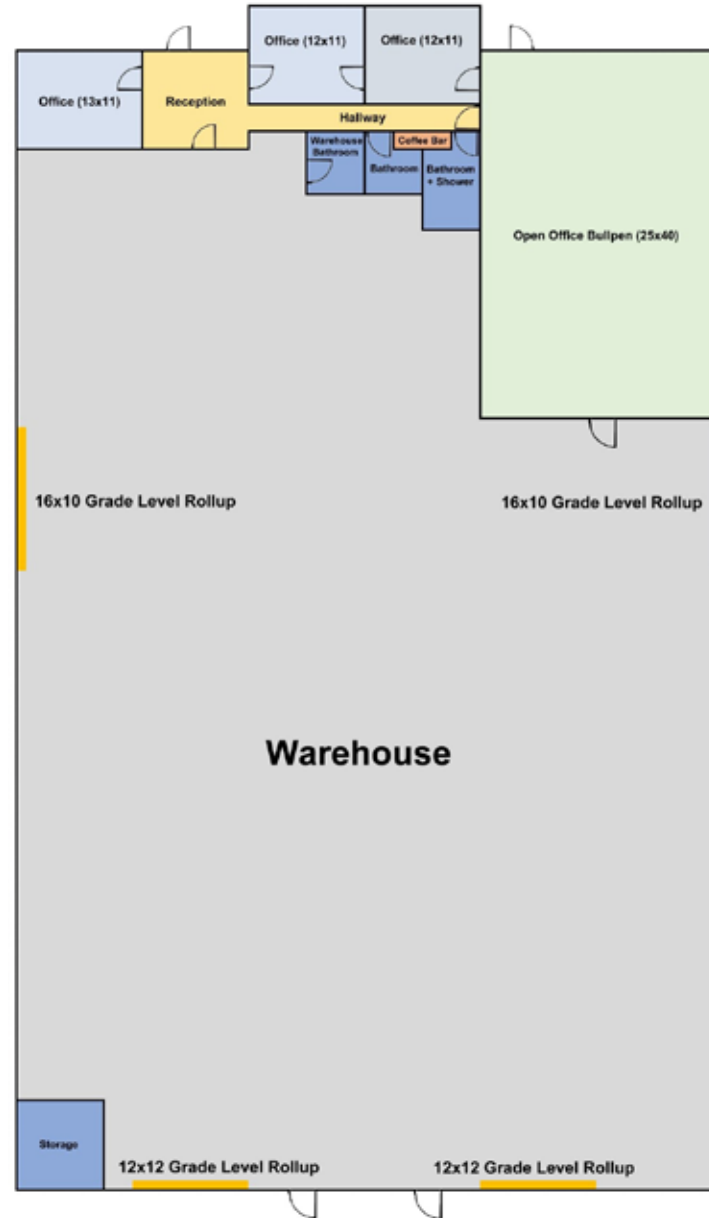
IMMEDIATELY

ASKING RATE

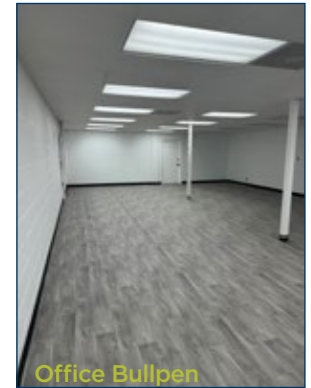
\$1.25 NNN

RECENT IMPROVEMENTS

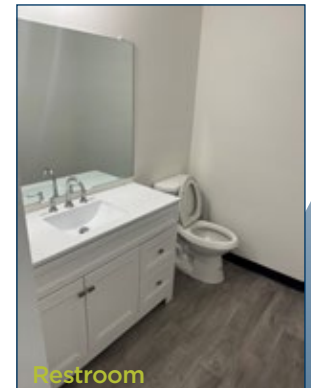
- NEW ROOF
- RESURFACED PAVEMENT
- NEW OFFICE RENOVATIONS
- NEW EVAP (WAREHOUSE)
- NEW AC UNITS (OFFICE)



Typical Office



Office Bullpen

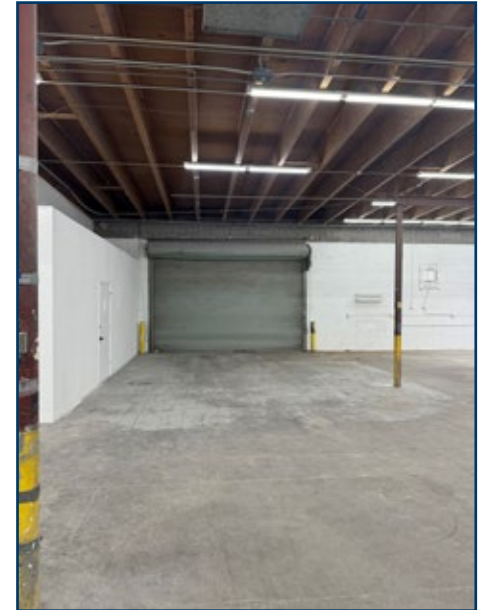


Restroom



FOR LEASE

5611 S 24th St., Phoenix, AZ



// PROPERTY LOCATION



CONTACT INFO:

WILL GROVES

Director

+ 1 602 682 8260

will.groves@cushwake.com

JOHN POMPAY

Senior Director

+ 1 602 224 4422

john.pompay@cushwake.com

2555 East Camelback Rd., Suite 400

Phoenix, AZ 85016

ph: +1 602 954 9000

fx: +1 602 253 0528

cushmanwakefield.com

