

FOR LEASE

# 31601 S COAST HWY, SUITE 100

*±1,860 SF of ocean-view office space  
available for sublease or direct lease  
in South Laguna Beach*



31601 S COAST HWY, SUITE 100

*±1,860 SF office space featuring private offices, spacious open work area, upgraded finishes, expansive glass treatment and free on-site parking*

±1,860 SF office space

\$3.75 PSF + electricity / janitorial

Featuring three (3) private offices, one (1) conference room and large open work area

Exterior building signage available

Recently remodeled

Available sublease term: 10 months  
11/1/2024 - 8/31/2025

Available direct term: 3-5 years

Beautiful ocean views, hardwood floors, and extensive use of glass and upgraded finishes

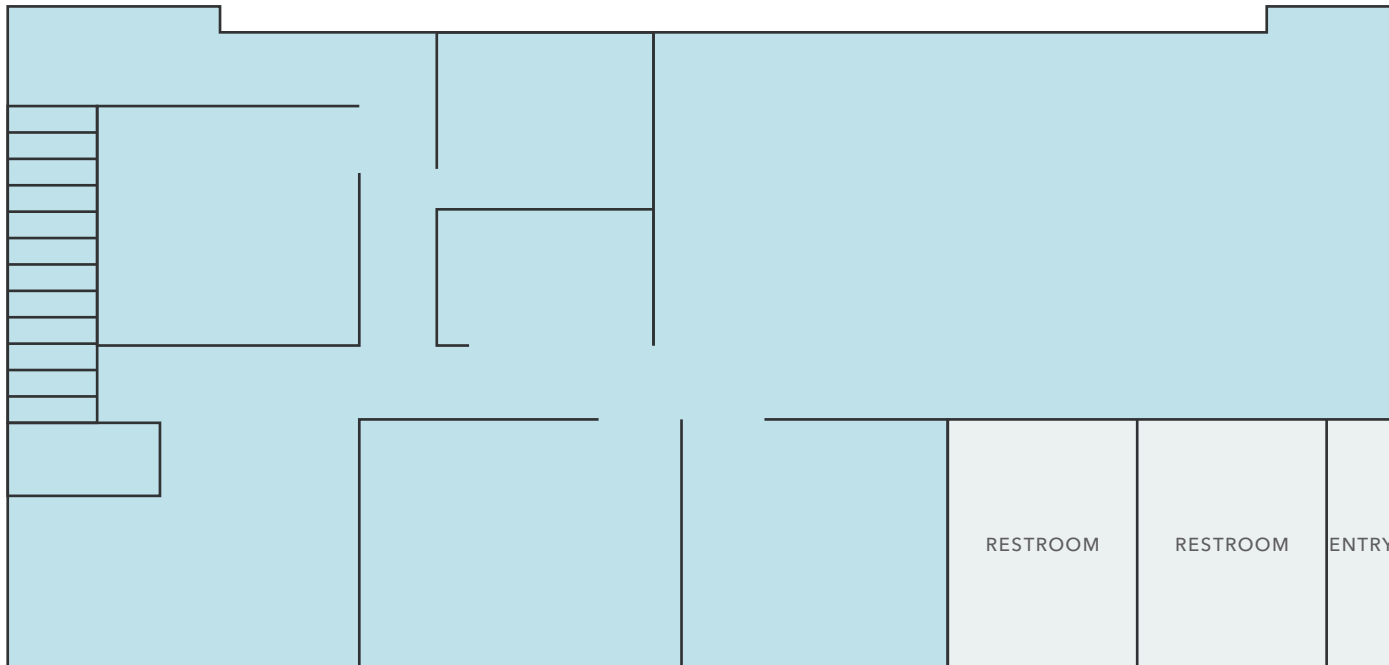
On-site free surface parking

Immediate occupancy

Call to show



# FLOOR PLAN



*±1,860 SF*  
AVAILABLE

*\$3.75 PSF*  
+ ELECTRICITY / JANITORIAL

*NOW*  
AVAILABLE

\*Varies from actual

OCEAN VIEWS



## 31601 S COAST HWY, SUITE 100

*For more information on  
this property, please contact*

**MICHAEL DORSEY**

**T** 949.557.5072

**C** 949.500.2146

mike.dorsey@kidder.com

**LIC N° 00560821**

**KIDDER.COM**

This information supplied herein is from sources we deem reliable. It is provided without any representation, warranty, or guarantee, expressed or implied as to its accuracy. Prospective Buyer or Tenant should conduct an independent investigation and verification of all matters deemed to be material, including, but not limited to, statements of income and expenses. Consult your attorney, accountant, or other professional advisor. All Kidder Mathews designs are the sole property of Kidder Mathews. Branded materials and layouts are not authorized for use by any other firm or person.

