



For sale

8820 66th Street North
Pinellas Park, FL 33782

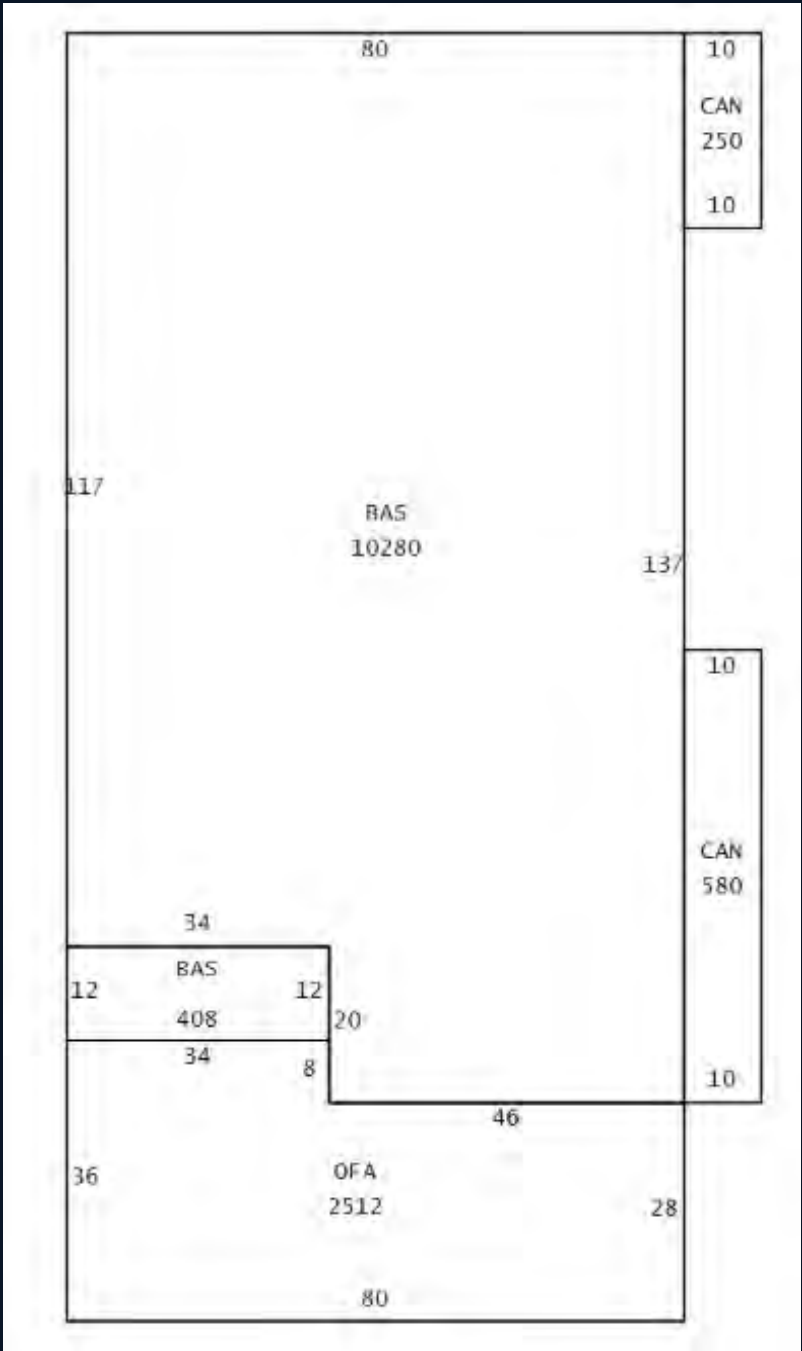
Delivered vacant
13,200 SF industrial building on 1.75 AC
Excess yard for industrial outdoor storage





Highlights

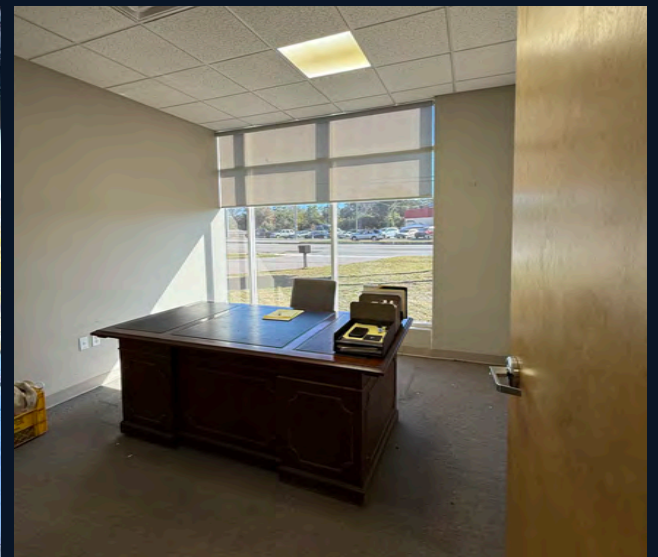
Total SF	13,200
Office SF	2,920
Acerage	1.75
Loading	Five (5) grade-level doors One of five is oversized
Year Built	1977
Clear Height	18' - 20'
Building type	Corrugated Metal
Zoning	C-2: General Commercial and Services District.” Permitted Uses: Vehicle Storage, Maintenance, and repair. Light Manufacturing and Light Industrial.
Flood zone	X (non flood zone)
Additional features	Grandfathered-in signage on 66th St N Excess yard for IOS Two points of ingress/egress One (1) HVLS Big-Ass Fan in-place
DD material	Roof recently inspected, lifespan estimated to be through 2046. Site description, flood zone, zoning details, floor plans and boundary area survey available upon request.



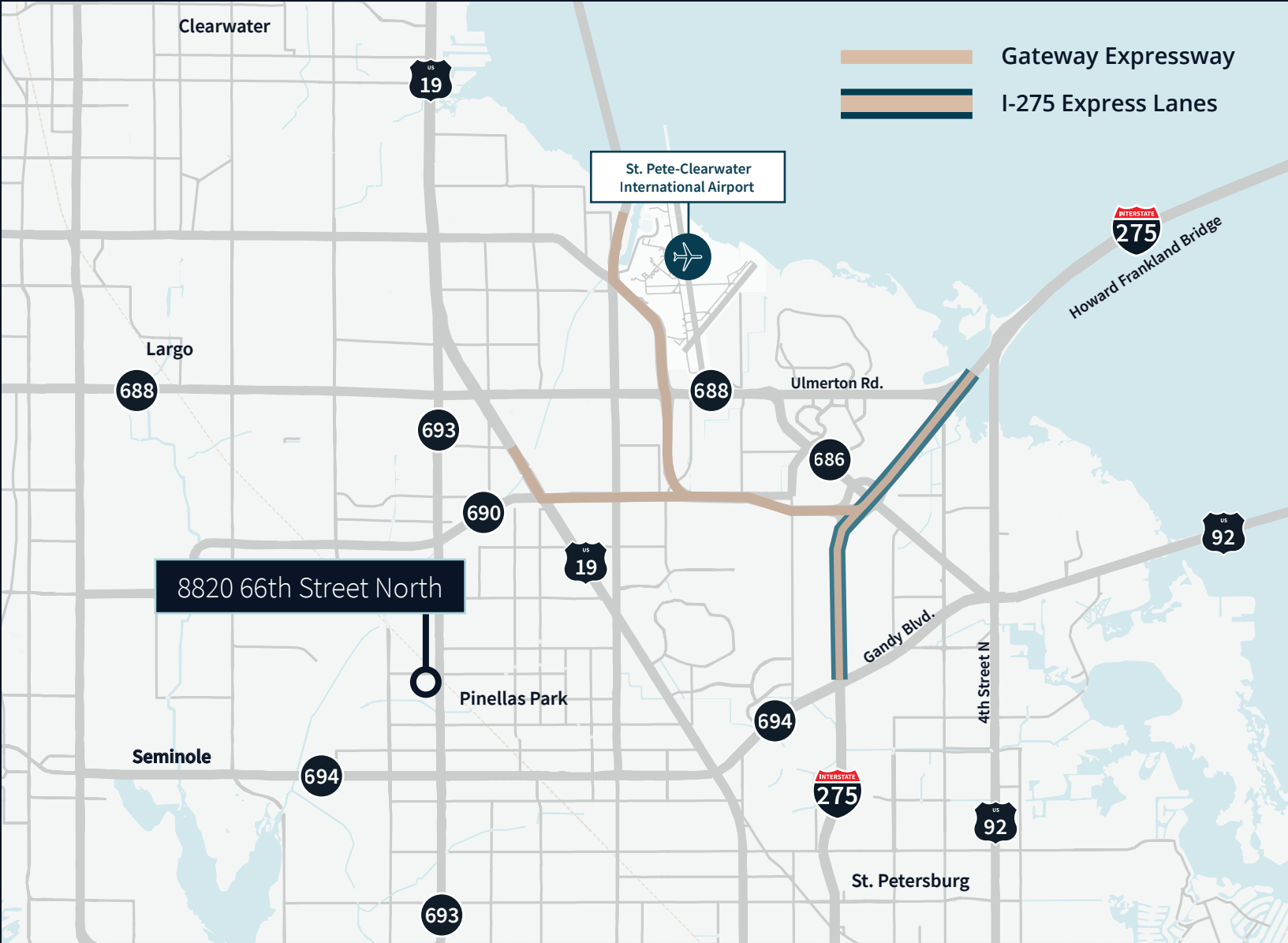
Photos



Photos



Location map





Contact:

Harrison Pithers

Vice President

+1 813 610 0239

harrison.pithers@jll.com

John C. Dunphy, SIOR, CCIM

Executive Managing Director

+1 813 387 1312

johnc.dunphy@jll.com

Although information has been obtained from sources deemed reliable, JLL does not make any guarantees, warranties or representations, express or implied, as to the completeness or accuracy as to the information contained herein. Any projections, opinions, assumptions or estimates used are for example only. There may be differences between projected and actual results, and those differences may be material. JLL does not accept any liability for any loss or damage suffered by any party resulting from reliance on this information. If the recipient of this information has signed a confidentiality agreement with JLL regarding this matter, this information is subject to the terms of that agreement. ©2026 Jones Lang LaSalle Brokerage, Inc. All rights reserved.