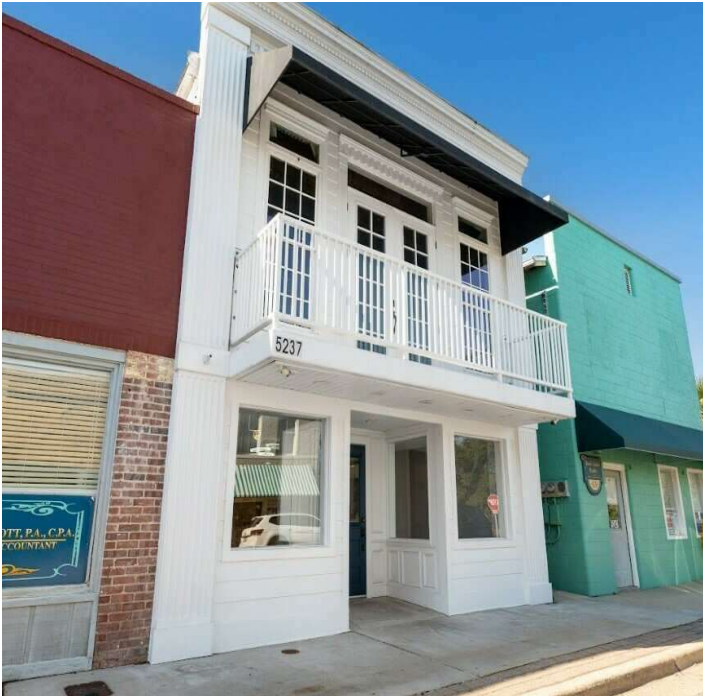


LEASE

5237 WILLING STREET
5237 Willing Street Milton, FL 32570



PROPERTY DESCRIPTION

Fully renovated in 2022, this retail space is brand new from the concrete slab to the fire-rated ceiling. 1508 SF with an open floor plan, 2 ADA restrooms, 3 compartment sink, and grease trap. Located in Historic Downtown Milton and a half a block to US Hwy 90, this site includes open downtown parking in front of the location and is surrounded by multiple public parking lots. AADT on Willing St of 8,300 with US Hwy 90/Willing St Lighted intersection AADT of ~20,000. Demographics within a 5-mile radius include a Total Population of 51,320 and an Average Household Income of \$97,341

PROPERTY HIGHLIGHTS

- Fully Renovated, New HVAC, New Electrical, Grease Trap, On Street Parking/ Public Parking Lots. On Site Storage. Signage.

OFFERING SUMMARY

Lease Rate:	\$20.00 SF/yr (MG)
Number of Units:	1
Available SF:	1,508 SF
Lot Size:	0.04 Acres
Building Size:	3,041 SF

DEMOGRAPHICS	1 MILE	3 MILES	5 MILES
Total Households	1,194	9,756	18,559
Total Population	2,889	25,071	51,320
Average HH Income	\$73,577	\$88,529	\$97,341

Melissa Glyptis Simpson
(850) 733-6532



COLDWELL BANKER
COMMERCIAL
REALTY

LEASE

5237 WILLING STREET
5237 Willing Street Milton, FL 32570



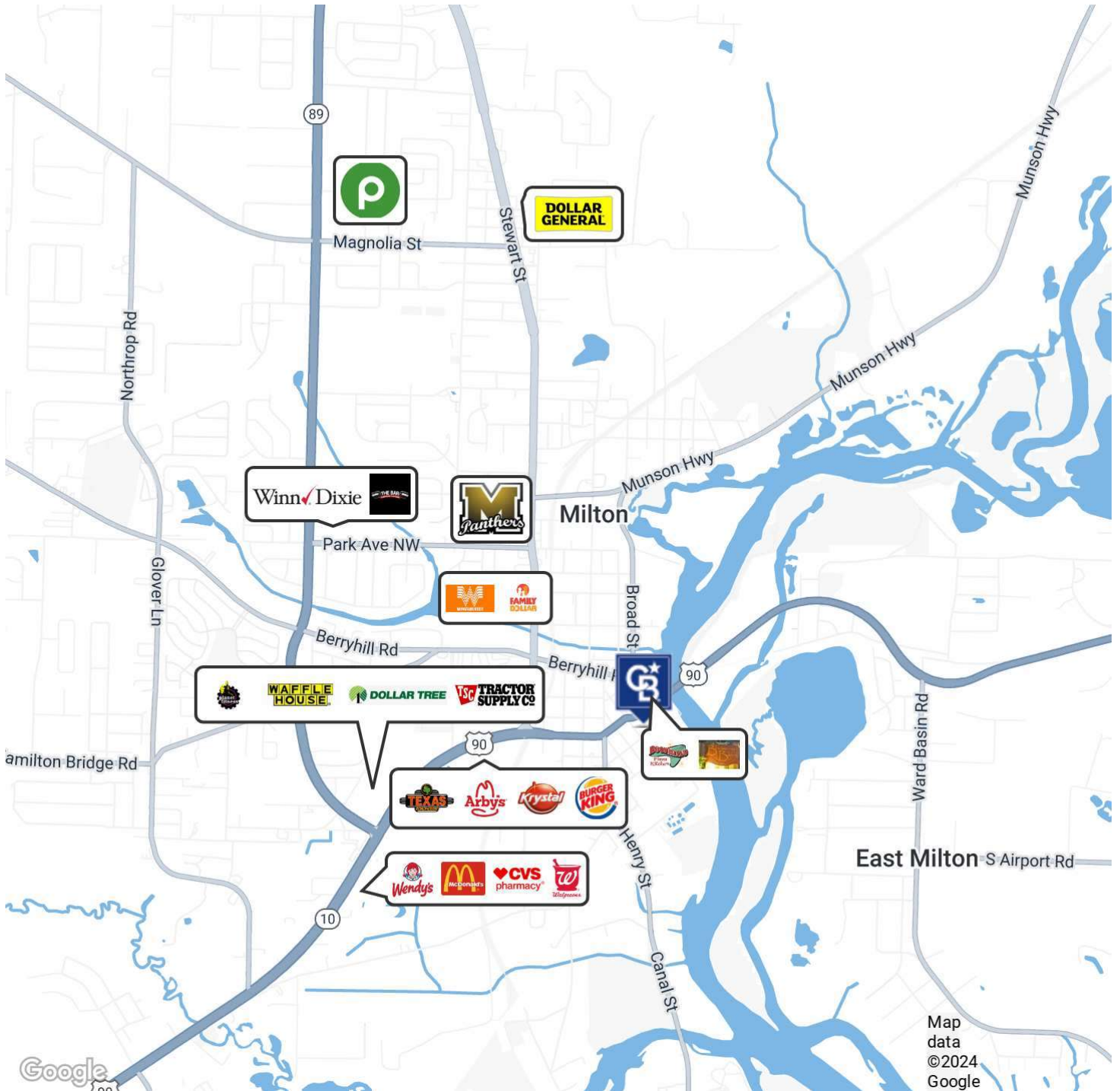
Melissa Glyptis Simpson
(850) 733-6532



COLDWELL BANKER
COMMERCIAL
REALTY

LEASE

5237 WILLING STREET
5237 Willing Street Milton, FL 32570



Melissa Glyptis Simpson
(850) 733-6532

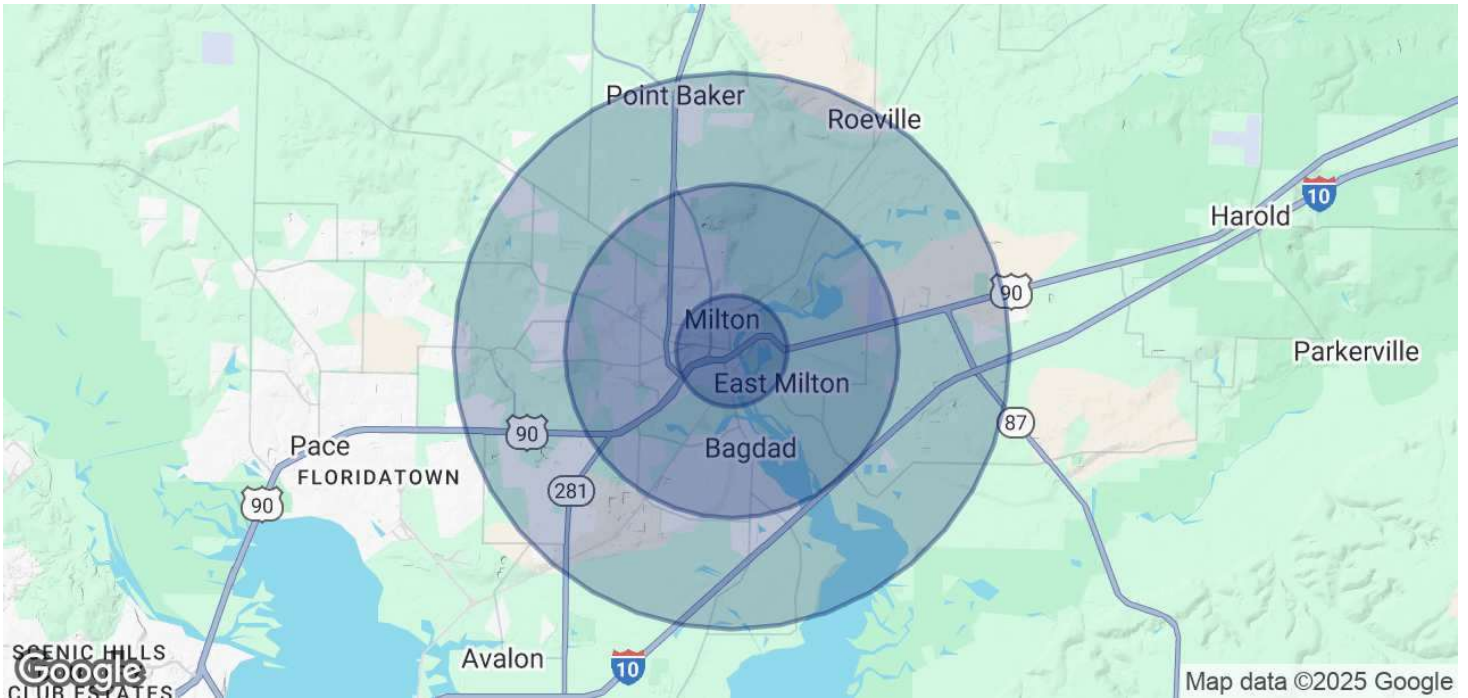


**COLDWELL BANKER
COMMERCIAL**
REALTY

LEASE

5237 WILLING STREET

5237 Willing Street Milton, FL 32570



POPULATION

	1 MILE	3 MILES	5 MILES
Total Population	2,889	25,071	51,320
Average Age	43	41	41
Average Age (Male)	40	39	40
Average Age (Female)	44	43	42

HOUSEHOLDS & INCOME

	1 MILE	3 MILES	5 MILES
Total Households	1,194	9,756	18,559
# of Persons per HH	2.4	2.6	2.8
Average HH Income	\$73,577	\$88,529	\$97,341
Average House Value	\$218,654	\$272,907	\$277,891

Demographics data derived from AlphaMap

Melissa Glyptis Simpson
(850) 733-6532



COLDWELL BANKER
COMMERCIAL
REALTY