

7610 HOOVER

7610 Hoover Rd, Platte City, MO 64079



Michael Meier, Principal

Aristocrat Realty

913.271.7656

mmeier@aristocrat-realty.com

7610 HOOVER

PROPERTY INFORMATION

Call for Price

PROPERTY ADDRESS

**7610 Hoover Rd
Platte City, MO 64079**

LAND SIZE

150.00 Acres

**7610 Hoover Rd Platte
City, MO 64079**

Company Disclaimer

This information has been obtained from sources believed reliable. We have not verified it and make no guarantee, warranty or representation about it. Any projections, opinions, assumptions or estimates used are for example only and do not represent the current or future performance of the property. You and your advisors should conduct a careful, independent investigation of the property to determine to your satisfaction the suitability of the property for your needs. Photos herein are the property of their respective owners and use of these images without the express written consent of the owner is prohibited.



PROPERTY OVERVIEW

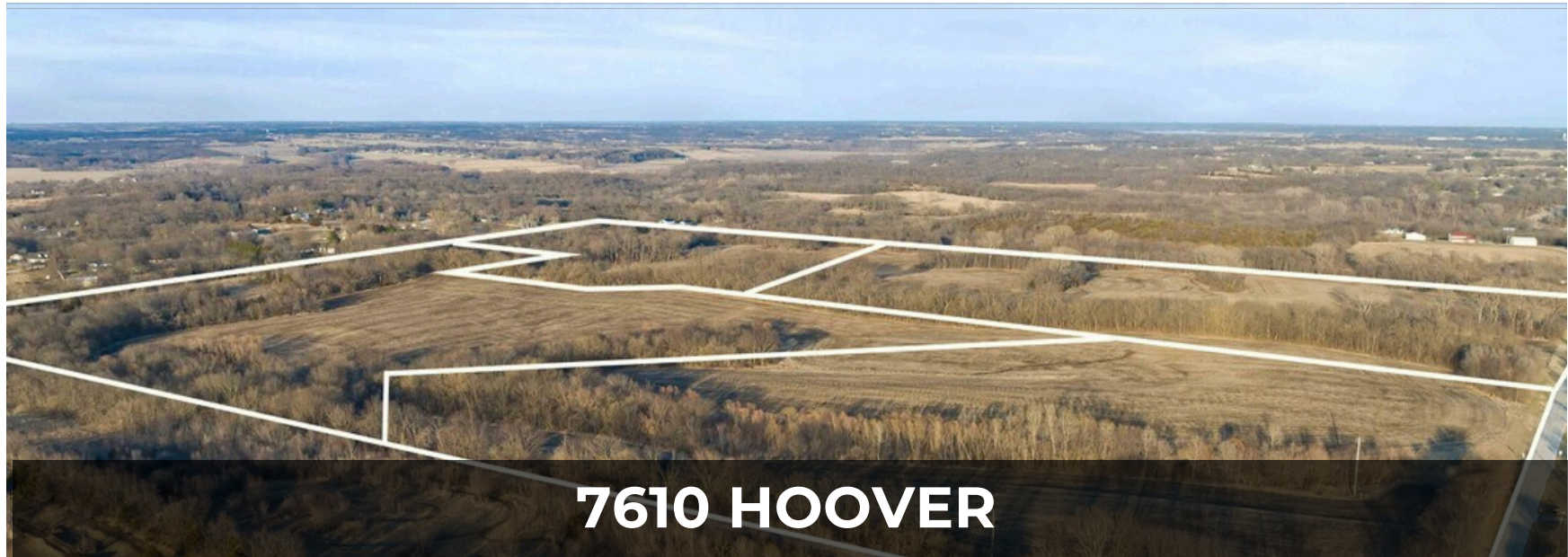
Welcome to your dream property! This is your chance to own a slice of Platte County country side Expansive 40-acre lots (up to 150 acres) available for sale. Perfect for individuals looking to build their dream home, this property boasts an ideal location and easy access to essential amenities.

If you need more land, we are willing to work with you to get your desired acreage.

Water and power already to site!

Location is everything, and this property has it all. Conveniently located between I-29 and Interstate 169, you will be able to easily access major highways for a quick commute. The property is only 8 minutes from Smithville, 10 minutes from the airport, and 10 minutes from downtown Platte City, making it a prime location for both work and play. You can also enjoy the bustling Zona Rosa area in just 15 minutes, and the charming town of Weston in 20 minutes. For even more entertainment options, Legends is only 23 minutes away, and downtown Kansas City can be reached in just 28 minutes.

Don't miss out on the opportunity to own your own piece of paradise just outside of the Platte City, city limits. Contact us today to learn more about these 40-acre lots for sale and start planning your dream home.



7610 Hoover Rd, Platte City, MO 64079



PROPERTY PHOTOS



7610 HOOVER
7610 Hoover Rd, Platte City, MO 64079



PROPERTY PHOTOS



7610 HOOVER

7610 Hoover Rd, Platte City, MO 64079



PROPERTY PHOTOS



7610 HOOVER

7610 Hoover Rd, Platte City, MO 64079



PROPERTY PHOTOS

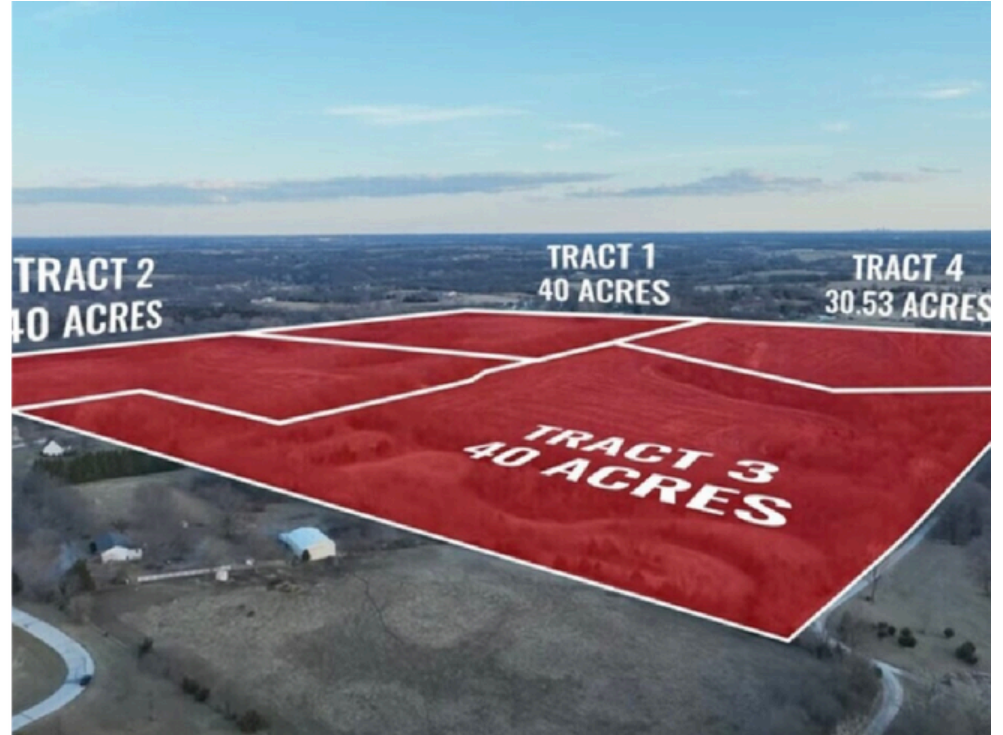


7610 HOOVER

7610 Hoover Rd, Platte City, MO 64079



PROPERTY PHOTOS

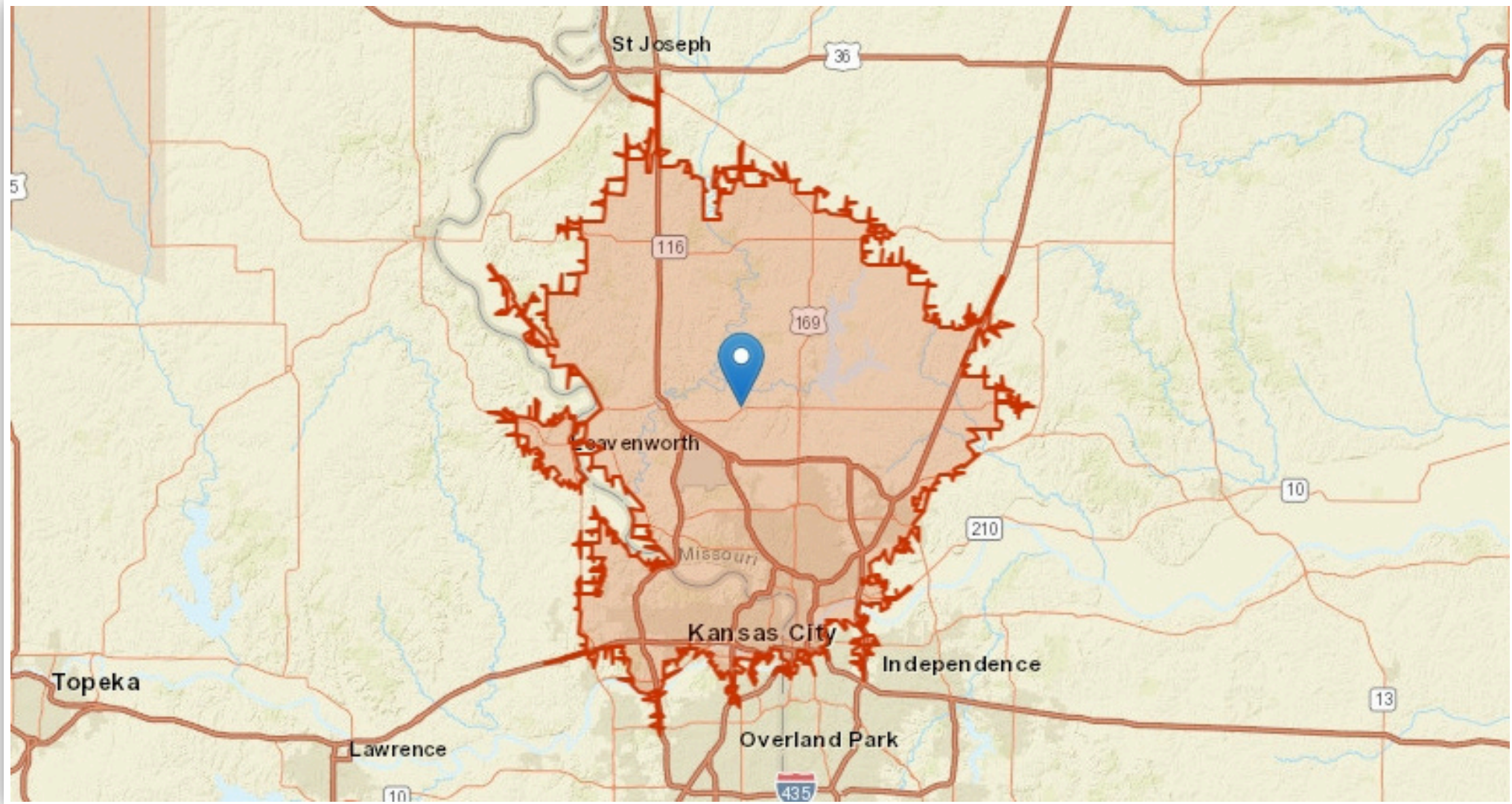


7610 HOOVER

7610 Hoover Rd, Platte City, MO 64079



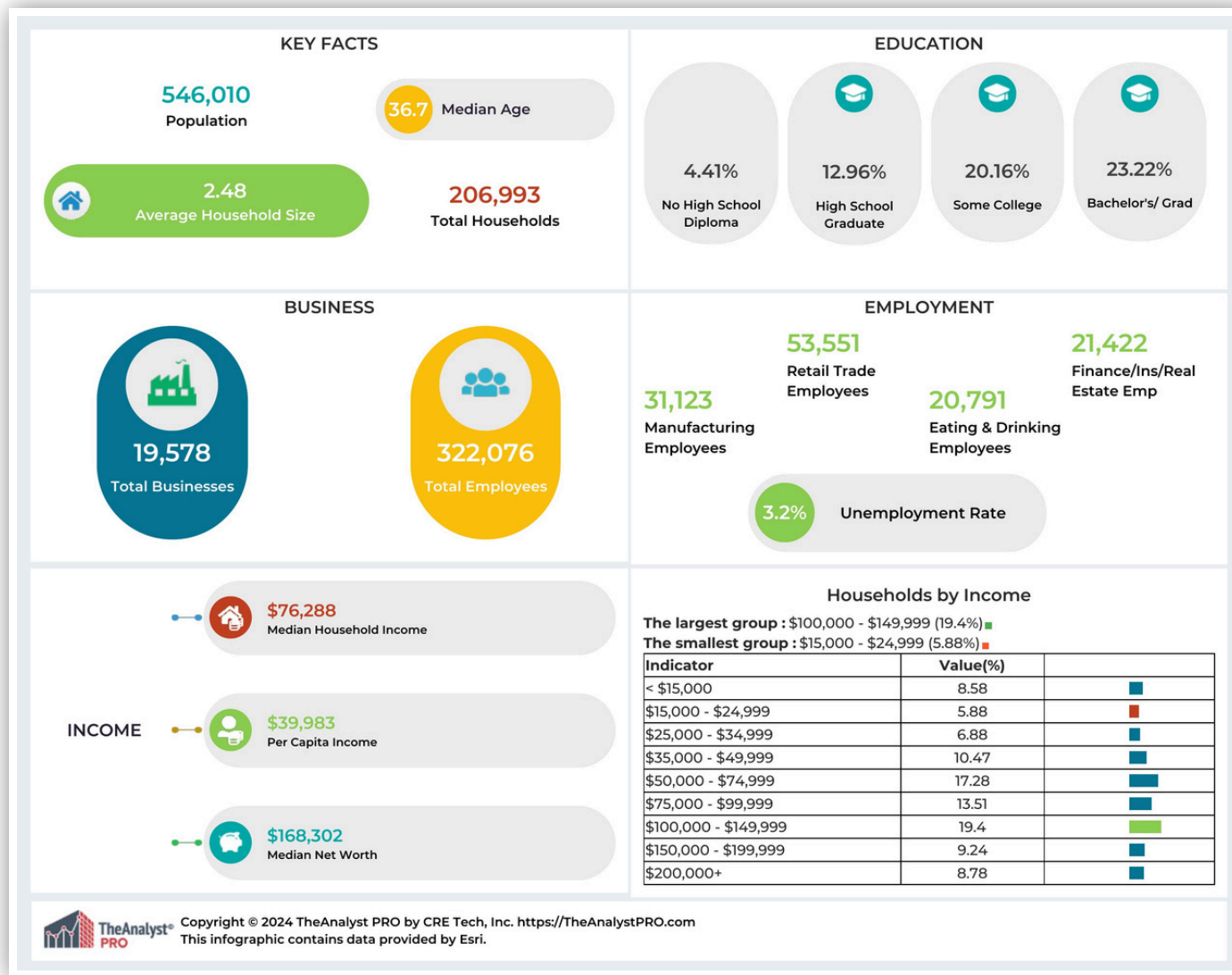
LOCATION/STUDY AREA MAP (DRIVE TIME: 30 MINUTES)



7610 HOOVER

7610 Hoover Rd. Platte City, MO. 64079

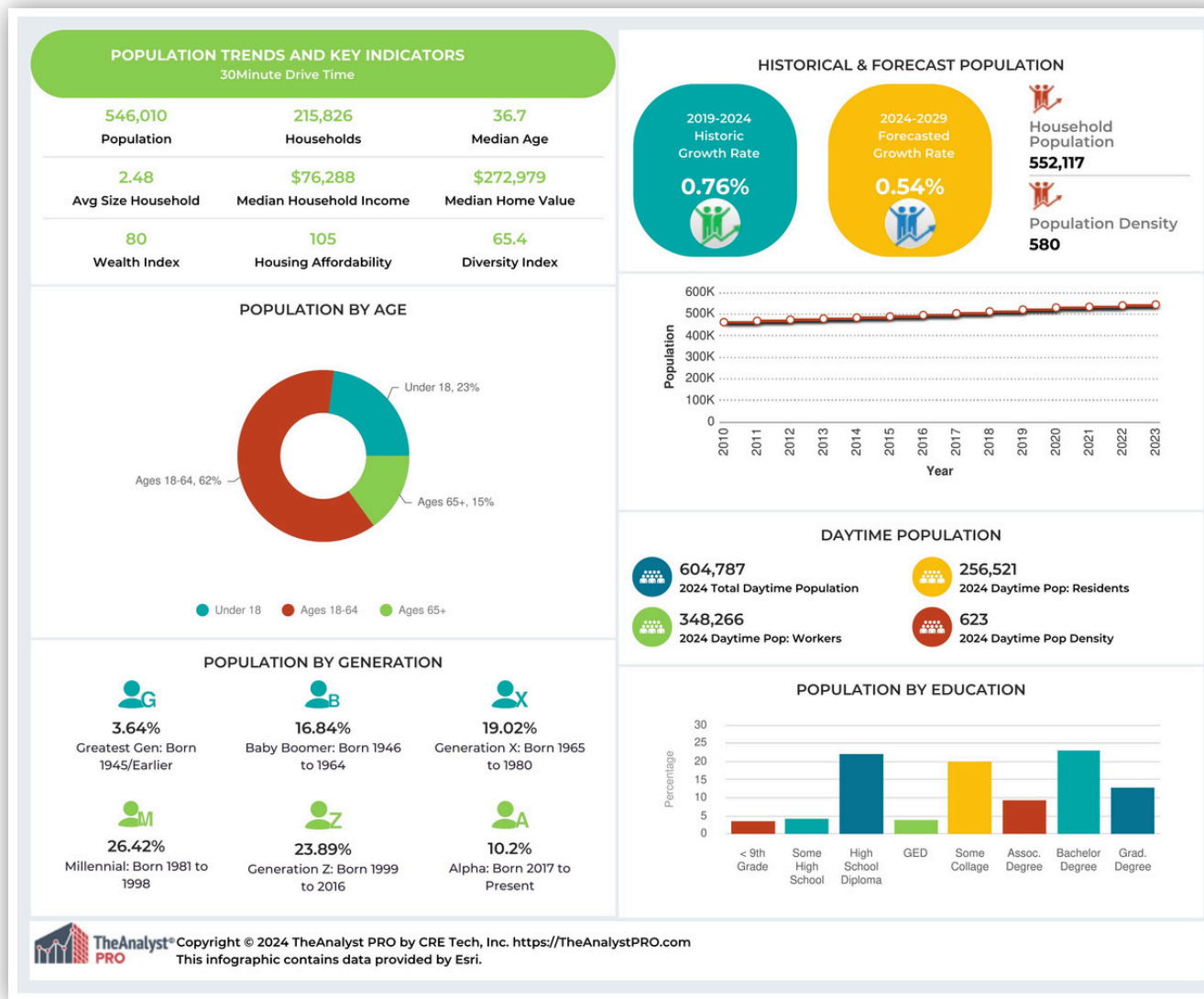
INFOGRAPHIC: KEY FACTS (DRIVE TIME: 30 MINUTES)



7610 HOOVER
7610 Hoover Rd. Platte City, MO. 64079



INFOGRAPHIC: POPULATION TRENDS (DRIVE TIME: 30 MINUTES)



7610 HOOVER
7610 Hoover Rd. Platte City, MO. 64079



7610 HOOVER
7610 Hoover Rd. Platte City, MO. 64079



CONTACT



Michael Meier, Principal
Phone: 913.271.7656
Email: mmeier@aristocrat-realty.com



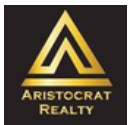
Sam Blacksher
Phone: 816.547.6219
Email: samb@aristocrat-realty.com



Sean Unrein
Phone: 913.300.1950
Email: sean.u@aristocrat-realty.com

7610 HOOVER

**7610 Hoover Rd Platte
City, MO 64079**



913.271.7656



mmeier@aristocrat-realty.com



**12200N Ambassador Dr
Kansas City, MO 64163 United States**