

NEW DEVELOPMENT FOR SALE

# HOPE VALLEY COMMERCIAL LOCATED ON US 167 AND ARCH STREET PIKE.

## HOPE VALLEY

Hensley, AR 72065

## PRESENTED BY:

### NATHAN HUTCHINS

O: 501.912.3660

[nathan.hutchins@svn.com](mailto:nathan.hutchins@svn.com)

AR #PB00063530

### TIFFANI SILVEY

O: 501.499.4739

[tiffani.silvey@svn.com](mailto:tiffani.silvey@svn.com)

AR #SA00097857







## OFFERING SUMMARY

<b>SALE PRICE:</b>	\$6.00-\$12.00 per foot [Pending Location and Size]
<b>LOT SIZE:</b>	1.0-36 Acres

## PROPERTY OVERVIEW

New Development Hope Valley Estates. Project having over 800 residential and Multifamily mixed development, Prime opportunity to lease or purchase commercial frontage. New East End Sheridan School located directly in front of development.

## PROPERTY HIGHLIGHTS

- Large residential and multifamily development already underway.
- Commercial lots with Hwy frontage visibility.
- East End frontage across from new East End Middle School.
- Various sized commercial lots.
- Round about in main center of development.
- Controlled lighted intersection already approved.
- Established and under construction retail centers being built and or open with established Tenants.
- All utilities available including fiber optic, sewer, gas and electric.

### NATHAN HUTCHINS

O: 501.912.3660

nathan.hutchins@svn.com

AR #PB00063530

### TIFFANI SILVEY

O: 501.499.4739

tiffani.silvey@svn.com

AR #SA00097857





Add text here...

**NATHAN HUTCHINS**

O: 501.912.3660

nathan.hutchins@svn.com

AR #PB00063530

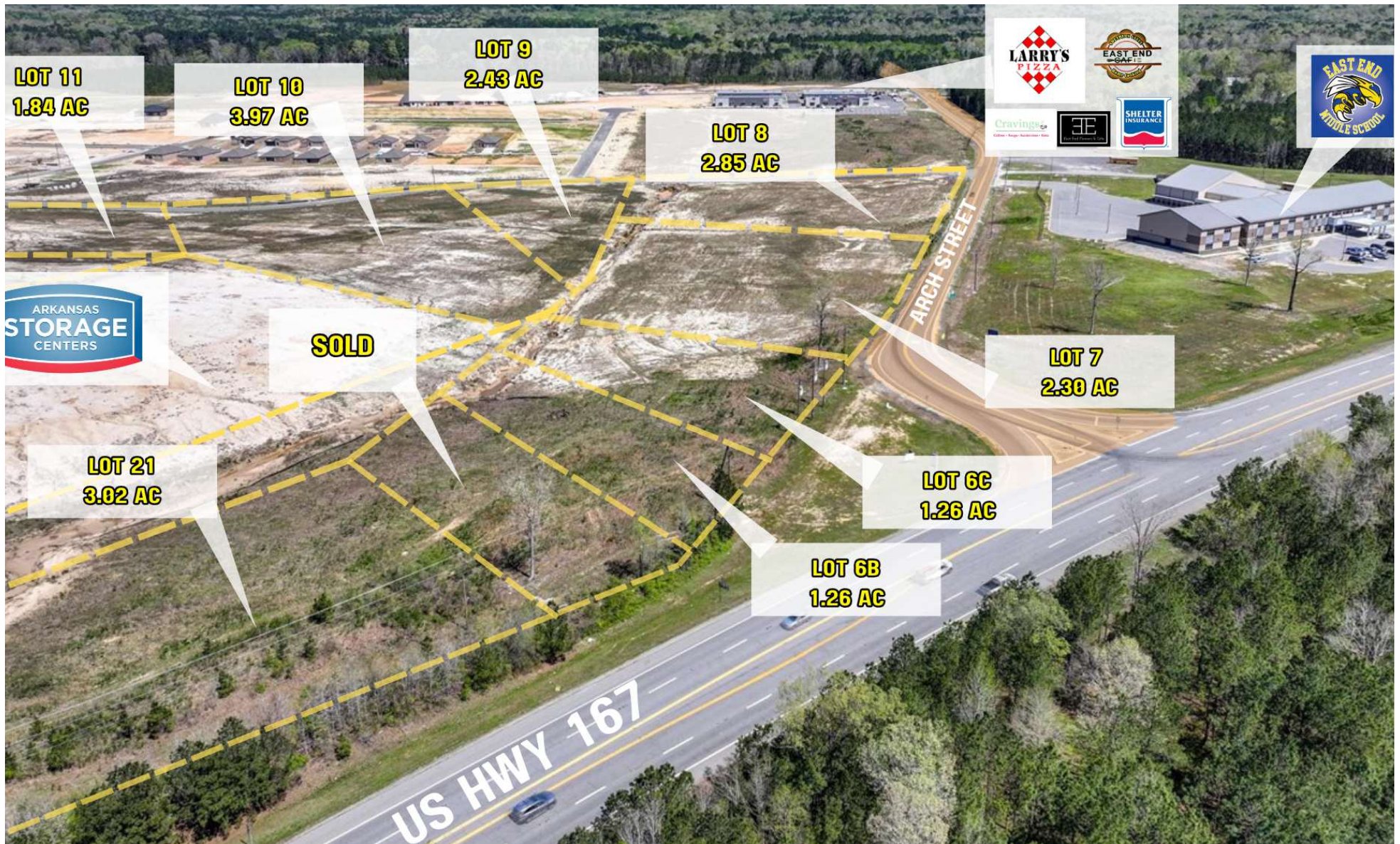
**TIFFANI SILVEY**

O: 501.499.4739

tiffani.silvey@svn.com

AR #SA00097857





**NATHAN HUTCHINS**

O: 501.912.3660

nathan.hutchins@svn.com

AR #PB00063530

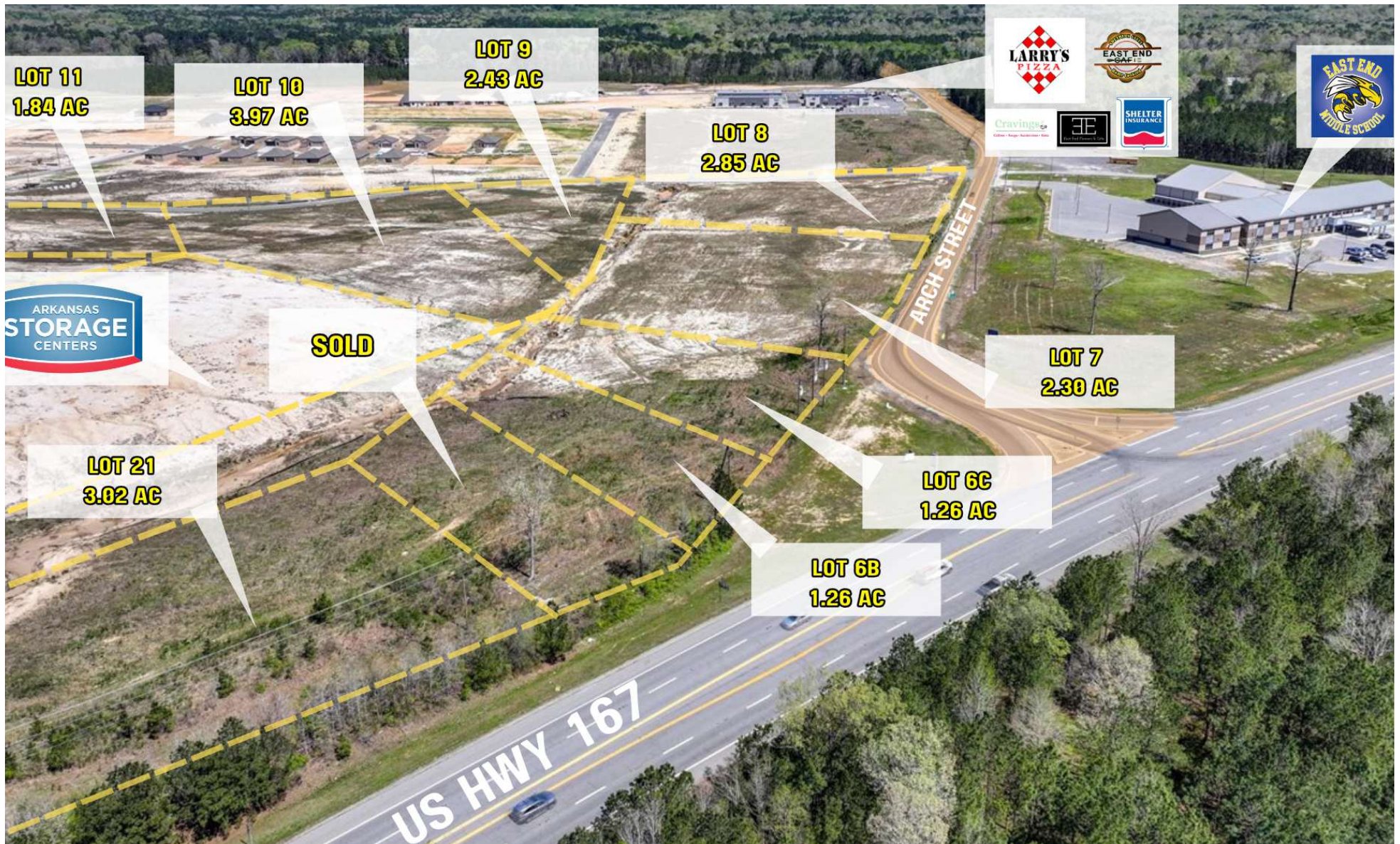
**TIFFANI SILVEY**

O: 501.499.4739

tiffani.silvey@svn.com

AR #SA00097857





**NATHAN HUTCHINS**

O: 501.912.3660

nathan.hutchins@svn.com

AR #PB00063530

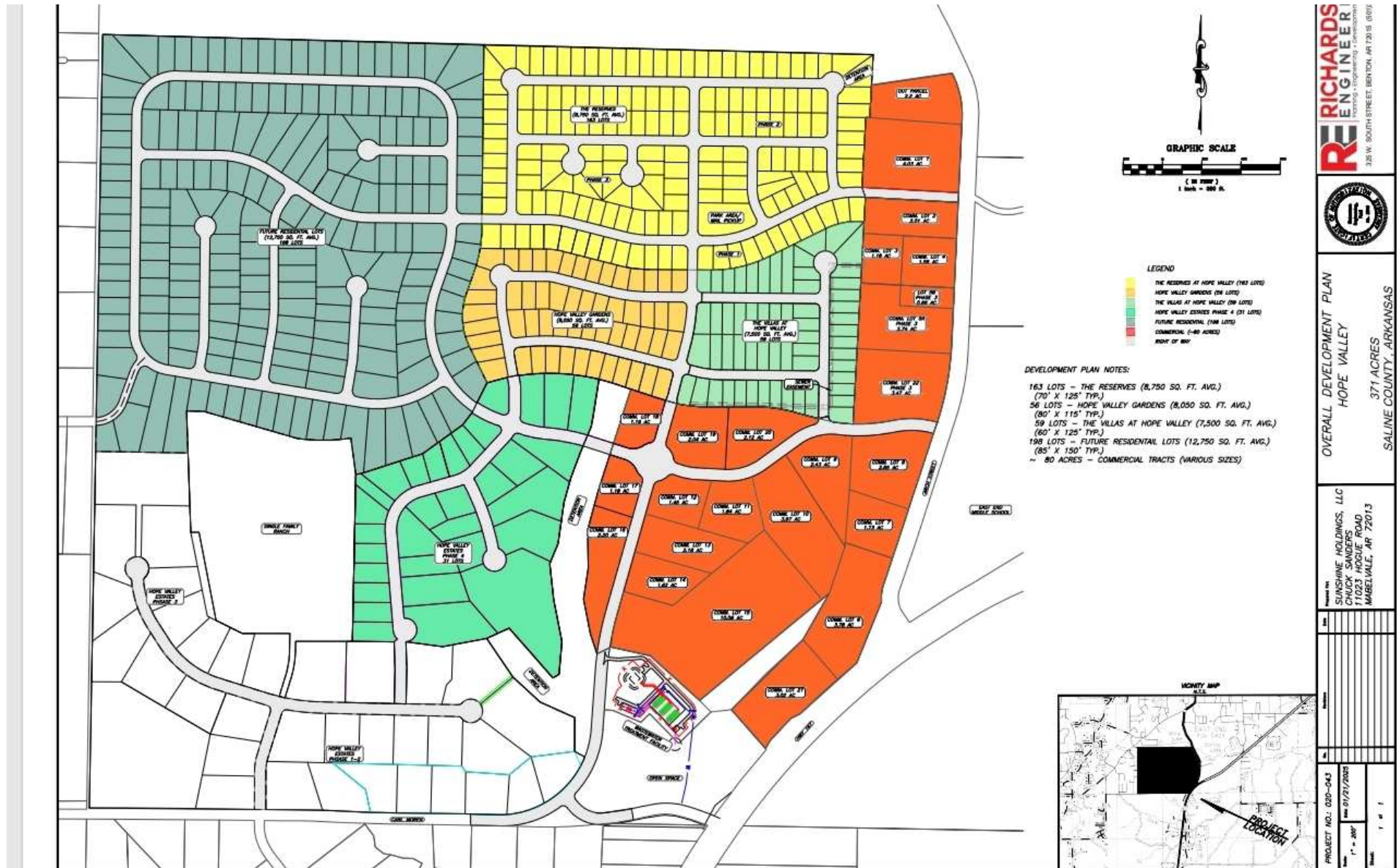
**TIFFANI SILVEY**

O: 501.499.4739

tiffani.silvey@svn.com

AR #SA00097857





**NATHAN HUTCHINS**

O: 501.912.3660

nathan.hutchins@svn.com

AR #PB00063530

**TIFFANI SILVEY**

O: 501.499.4739

tiffani.silvey@svn.com

AR #SA00097857

HOPE VALLEY US 167 And Arch Street Pike Hensley, AR 72065

SVN | ARKBEST REALTY, LLC 6

STATUS	LOT #	SUB-TYPE	SIZE	PRICE
Available	1	Retail-Pad	4.03 Acres	\$1,404,374
Available	2	Retail-Pad	2.01 Acres	\$700,444
Available	5A	Retail-Pad	2.74 Acres	\$954,835
Available	22	Retail-Pad	3.47 Acres	\$1,511,532
Available	8	Retail-Pad	2.85 Acres	\$1,489,752
Available	7	Retail-Pad	1.73 Acres	\$904,305
Available	6B	Retail-Pad	1.26 Acres	\$658,627
Available	6C	Retail-Pad	1.26 Acres	\$658,627
Available	21	Retail	3.02 Acres	\$1,578,614
Available	9	Retail-Pad	2.43 Acres	\$635,104
Available	10	Retail-Pad	3.97 Acres	\$1,037,599
Available	11	Retail-Pad	1.84 Acres	\$480,902
Available	12	Retail-Pad	1.45 Acres	\$378,972
Available	13	Retail-Pad	2.18 Acres	\$569,764
Available	14	Retail-Pad	1.62 Acres	\$423,403
Available	16	Retail-Pad	2.2 Acres	\$574,992
Available	17	Retail-Pad	1.18 Acres	\$308,404
Available	18	Retail-Pad	1.19 Acres	\$311,018

**NATHAN HUTCHINS**

O: 501.912.3660

nathan.hutchins@svn.com

AR #PB00063530

**TIFFANI SILVEY**

O: 501.499.4739

tiffani.silvey@svn.com

AR #SA00097857

STATUS	LOT #	SUB-TYPE	SIZE	PRICE
Available	19	Retail-Pad	2.04 Acres	\$533,174
Available	20	Retail-Pad	2.12 Acres	\$554,083

**NATHAN HUTCHINS**  
O: 501.912.3660  
nathan.hutchins@svn.com  
AR #PB00063530

**TIFFANI SILVEY**  
O: 501.499.4739  
tiffani.silvey@svn.com  
AR #SA00097857