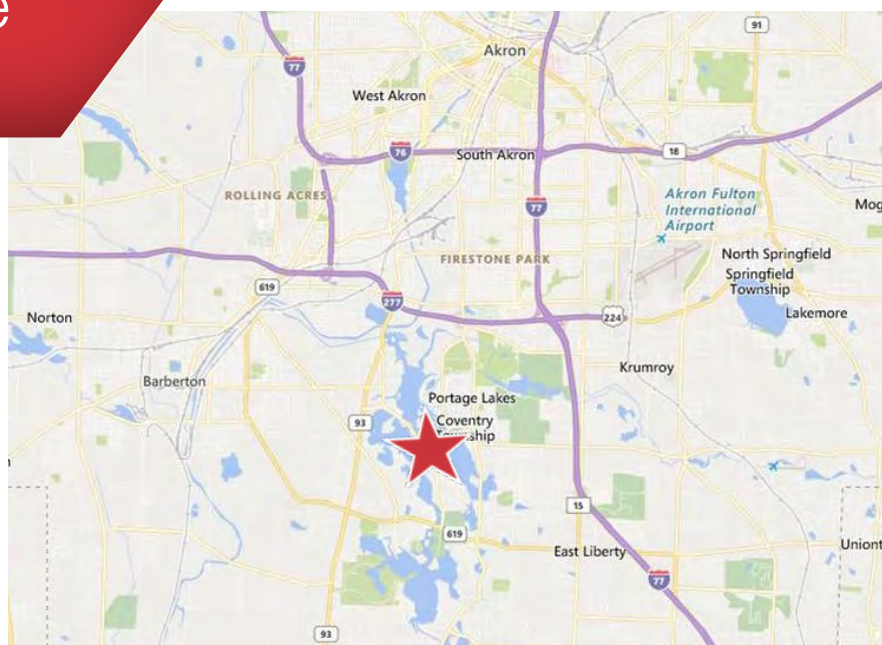




599 Portage Lakes Drive
Akron, OH 44319

Property Features

- Prime Commercial Site in the heart of Portage Lakes
- Lake View of West Reservoir
- 1.2475 acres
- Coventry Township
- Sale price: \$250,000



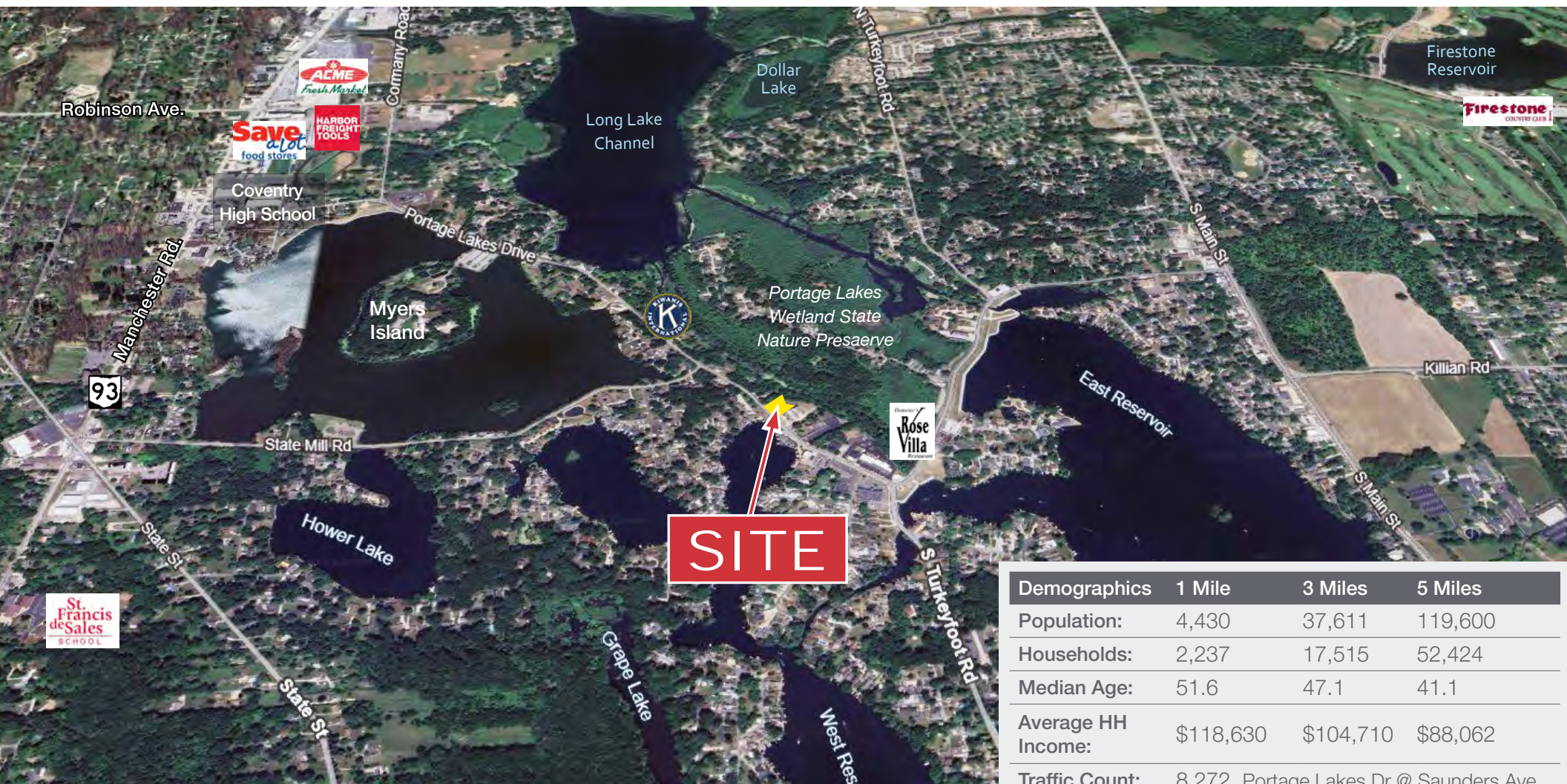
David Whyte 330 352 7746 | dwhyte@naipvc.com
Roger Sours, CCIM, MAI 330 730 5400 | rsours@naipvc.com

NO WARRANTY OR REPRESENTATION, EXPRESS OR IMPLIED, IS MADE AS TO THE ACCURACY OF THE INFORMATION CONTAINED HEREIN, AND THE SAME IS SUBMITTED SUBJECT TO ERRORS, OMISSIONS, CHANGE OF PRICE, RENTAL OR OTHER CONDITIONS, PRIOR SALE, LEASE OR FINANCING, OR WITHDRAWAL WITHOUT NOTICE, AND OF ANY SPECIAL LISTING CONDITIONS IMPOSED BY OUR PRINCIPALS NO WARRANTIES OR REPRESENTATIONS ARE MADE AS TO THE CONDITION OF THE PROPERTY OR ANY HAZARDS CONTAINED THEREIN ARE ANY TO BE IMPLIED.

540 White Pond Drive • Suite A
Akron, Ohio 44320
330 535 2661
naipvc.com

599 Portage Lakes Drive Akron, OH

FOR SALE
VACANT LAND



Demographics	1 Mile	3 Miles	5 Miles
Population:	4,430	37,611	119,600
Households:	2,237	17,515	52,424
Median Age:	51.6	47.1	41.1
Average HH Income:	\$118,630	\$104,710	\$88,062
Traffic Count:	8,272 Portage Lakes Dr @ Saunders Ave		

NAI Pleasant Valley
COMMERCIAL REAL ESTATE SERVICES, WORLDWIDE

David Whyte

330 352 7746 | dwhyte@naipvc.com

Roger Sours, CCIM, MAI

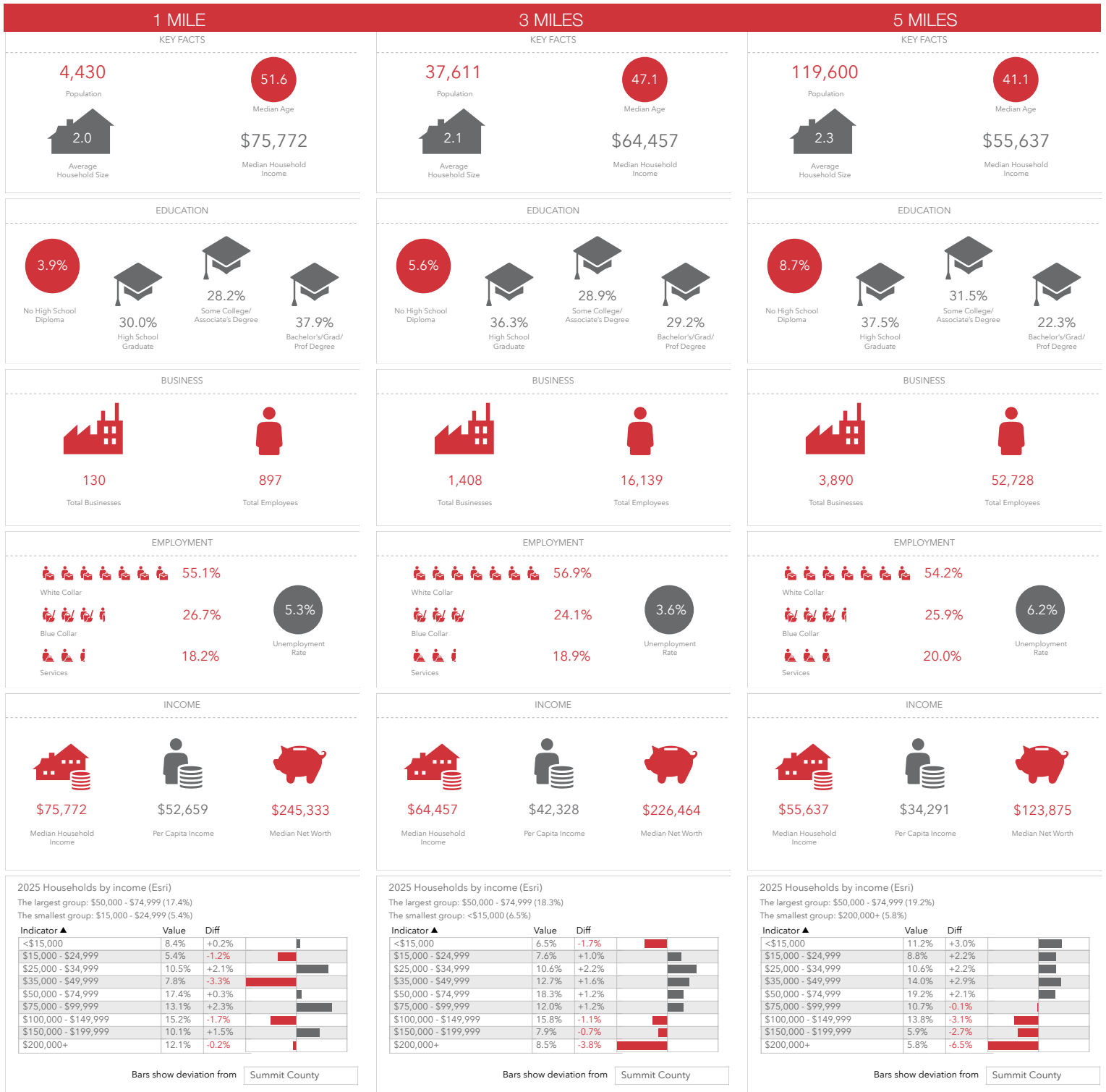
330 730 5400 | rsours@naipvc.com

540 White Pond Drive • Suite A
Akron, Ohio 44320
+1 330 535 2661

naipvc.com

599 Portage Lakes Drive Akron, OH

FOR SALE VACANT LAND



David Whyte 330 352 7746 | dwhyte@naipvc.com
Roger Sours, CCIM, MAI 330 730 5400 | rsours@naipvc.com

599 Portage Lakes Drive
Akron, OH

FOR SALE
VACANT LAND

Property Details

ACRES:	1.2475
FRONTAGE:	146'
DEPTH:	280'
TOPOGRAPHY:	Level to ravined
PARCEL #:	1906878
HIGHEST & BEST USE:	Commercial Development
ZONING:	B-2 Business
UTILITIES:	All public available
GAS:	Enbridge
WATER:	Akron
SEWER:	Summit County (+/- 550' east)
ELECTRIC:	First Energy

Price Details

SALE PRICE:	\$250,000
TAXES:	\$1,054.88/year

Location Details

INTERCHANGE:	Rt. 93; I-224/277
DISTANCE:	1.1 miles; 2.4 miles
DAILY TRAFFIC COUNT:	8,272 cars per day

David Whyte 330 352 7746 | dwhyte@naipvc.com
Roger Sours, CCIM, MAI 330 730 5400 | rsours@naipvc.com