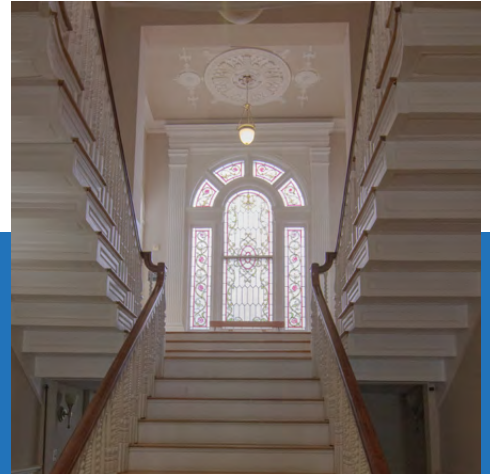


1808 ADAMS MILL ROAD NW

HISTORIC, FULL BUILDING SUBLEASE OPPORTUNITY: OFFICE OR RETAIL



SIZE

9,000 SF - 11,257 SF

RATE

\$35.00 psf

TERM

Through 2030

FEATURES



Three-story building with 1925 Art Deco design



Unique opportunity to occupy entire building (11,500 SF)



Abundant natural light



Walking distance to restaurants, retail services, & hotels



High-end buildout great for tech, nonprofit or media.



Plug & play



10 minute walk to Woodley Park / Adams Morgan Metro

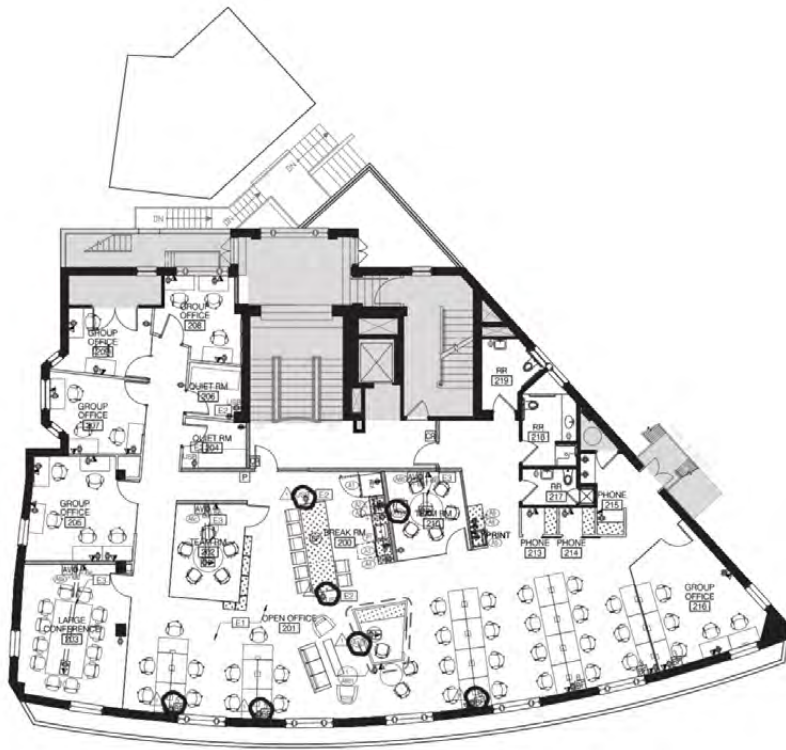


Opportunity for alternative retail / event space use

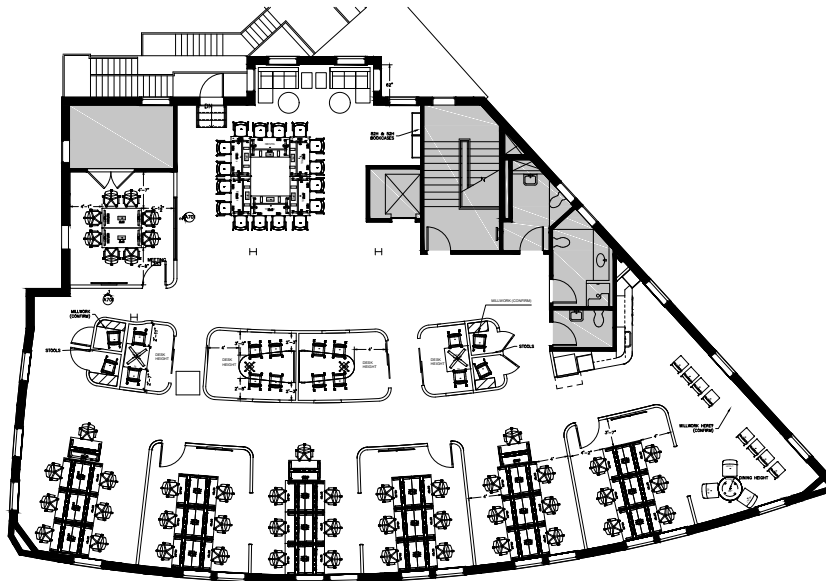


Longer term availability through landlord

2ND FLOOR:
4,668 SF



3RD FLOOR:
4,917 SF



1808 ADAMS MILL ROAD NW



2000 K Street NW, Suite 1000,
Washington, DC 20006

FOR INFORMATION OR INQUIRIES:

JOSH WHISENHUNT

josh.whisenhunt@transwestern.com / 202.835.7227

JAKE FOX

jake.fox@transwestern.com / 202.627.1742