

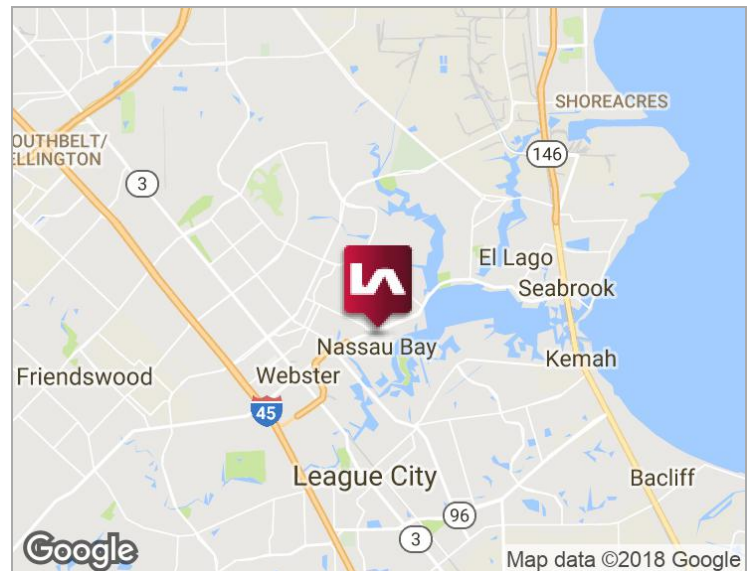
# NASSAU BAY TOWN SQUARE

SPACE PARK AT UPPER BAY DRIVE, NASSAU BAY, TEXAS 77058



## SITE OVERVIEW

- Land:** ± 5.0 Acres (± 217,800 SF)
- Zoning:** Commercial  
\*City will adjust
- Access:** Easy Access to NASA Parkway and FM 270
- Frontage:** ± 575' on Space Park Drive  
± 280' on Upper Bay Road
- Utilities:** Available Through the City
- Parking:** Adjoins City Hall Building With Some Shared Parking



## ECONOMIC DATA

**Sale Price:** Call For Information

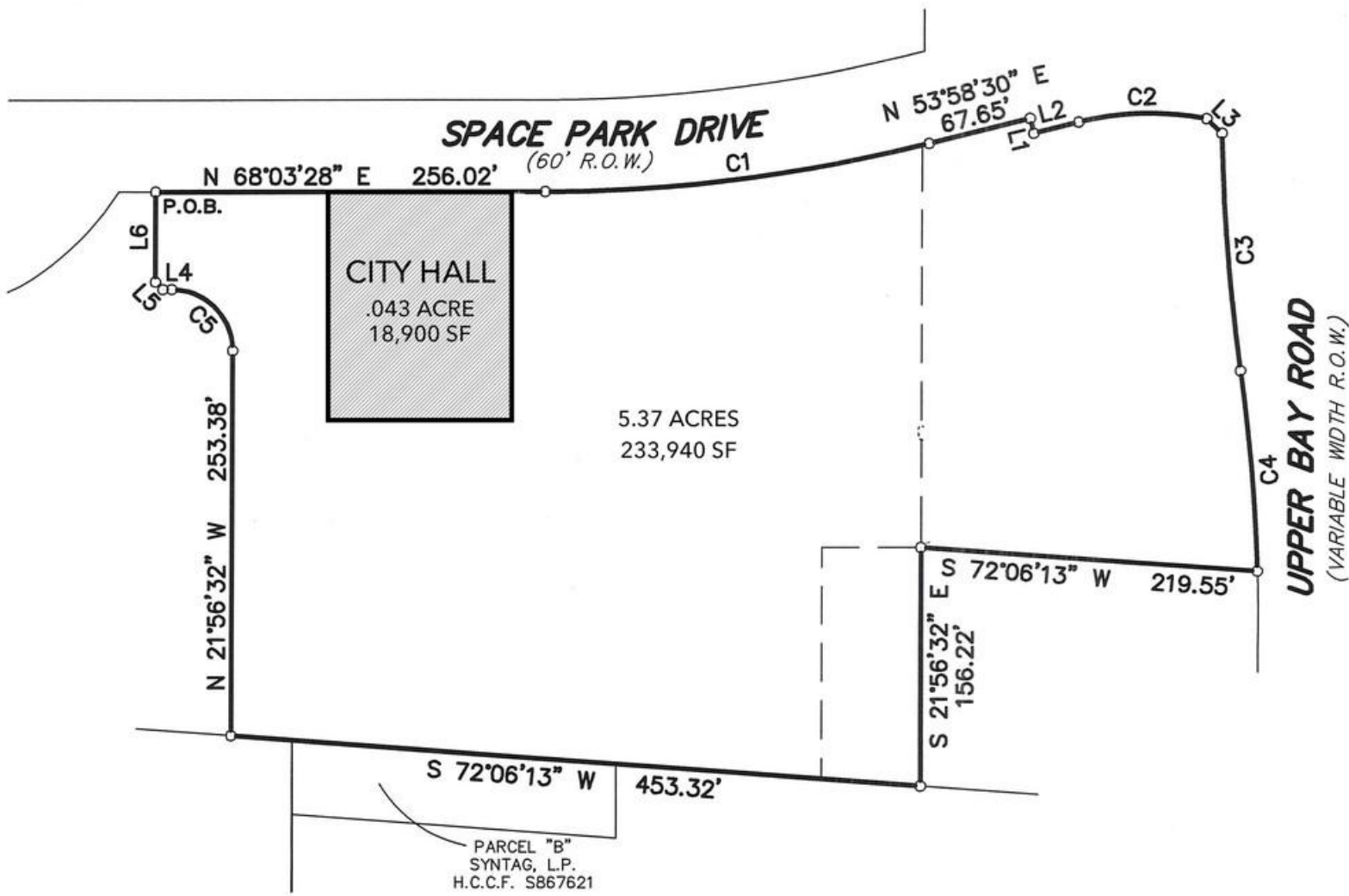
	1 Mile	3 Miles	5 Miles
<b>Total Households:</b>	3,366	25,874	65,178
<b>Total Population:</b>	6,789	59,618	163,694
<b>Average HH Income:</b>	\$81,312	\$81,117	\$93,273

**Drew Lewis** | Principal  
dlewis@lee-associates.com  
D 713.744.7406

All information furnished regarding property for sale, rental or financing is from sources deemed reliable, but no warranty or representation is made to the accuracy thereof and same is submitted to errors, omissions, change of price, rental or other conditions prior to sale, lease or financing or withdrawal without notice. No liability of any kind is to be imposed on the broker herein.

# NASSAU BAY TOWN SQUARE

SPACE PARK AT UPPER BAY DRIVE, NASSAU BAY, TEXAS 77058



Drew Lewis | Principal  
dlewis@lee-associates.com  
D 713.744.7406

All information furnished regarding property for sale, rental or financing is from sources deemed reliable, but no warranty or representation is made to the accuracy thereof and same is submitted to errors, omissions, change of price, rental or other conditions prior to sale, lease or financing or withdrawal without notice. No liability of any kind is to be imposed on the broker herein.

# NASSAU BAY TOWN SQUARE

SPACE PARK AT UPPER BAY DRIVE, NASSAU BAY, TEXAS 77058



## LOCATION DESCRIPTION

Today Nassau Bay Town Square is close to Interstate 45 (I-45). With the completion of the NASA Parkway Bypass Nassau Bay Town Square is even closer and is virtually located on I-45.

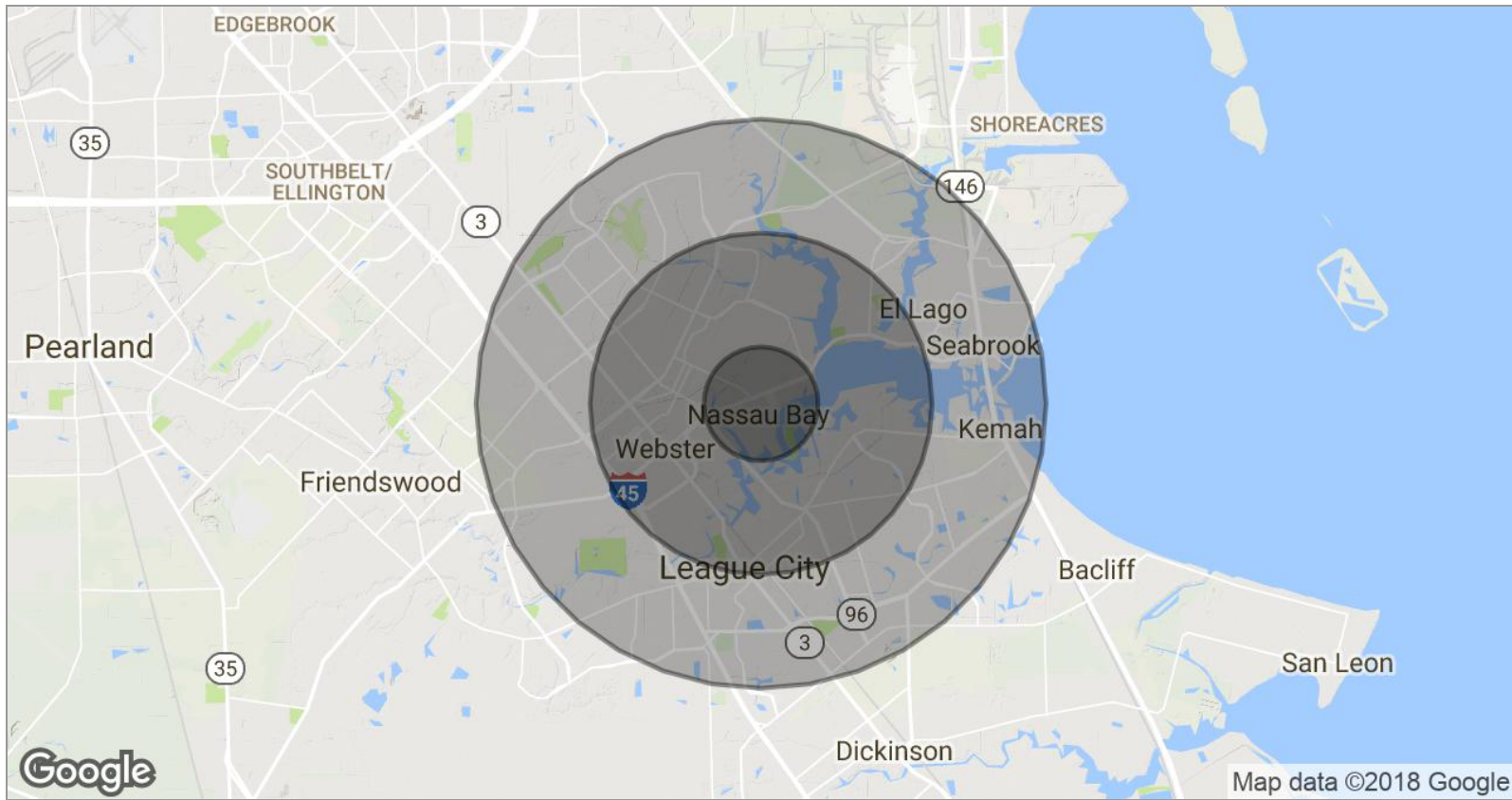
- No traffic lights between I.45 and Nassau Bay
- High visibility for NASA Parkway businesses
- Potential for large business relocation
- Just 10 minutes to Hobby Airport
- The best of both worlds - quick access from Nassau Bay to I-45, which means even faster access to Houston and Galveston
- No more congestion
- Increased retail marketing
- Virtually located on Interstate 45

**Drew Lewis** | Principal  
 dlewis@lee-associates.com  
 D 713.744.7406

All information furnished regarding property for sale, rental or financing is from sources deemed reliable, but no warranty or representation is made to the accuracy thereof and same is submitted to errors, omissions, change of price, rental or other conditions prior to sale, lease or financing or withdrawal without notice. No liability of any kind is to be imposed on the broker herein.

# NASSAU BAY TOWN SQUARE

SPACE PARK AT UPPER BAY DRIVE, NASSAU BAY, TEXAS 77058



<b>POPULATION</b>	<b>1 MILE</b>	<b>3 MILES</b>	<b>5 MILES</b>
TOTAL POPULATION	6,789	59,618	163,694
MEDIAN AGE	38.6	37.2	36.8
MEDIAN AGE (MALE)	38.1	37.0	36.4
MEDIAN AGE (FEMALE)	40.5	38.1	37.7
<b>HOUSEHOLDS &amp; INCOME</b>	<b>1 MILE</b>	<b>3 MILES</b>	<b>5 MILES</b>
TOTAL HOUSEHOLDS	3,366	25,874	65,178
# OF PERSONS PER HH	2.0	2.3	2.5
AVERAGE HH INCOME	\$81,312	\$81,117	\$93,273
AVERAGE HOUSE VALUE	\$123,042	\$196,386	\$205,224

\* Demographic data derived from 2010 US Census

**Drew Lewis** | Principal  
 dlewis@lee-associates.com  
 D 713.744.7406

All information furnished regarding property for sale, rental or financing is from sources deemed reliable, but no warranty or representation is made to the accuracy thereof and same is submitted to errors, omissions, change of price, rental or other conditions prior to sale, lease or financing or withdrawal without notice. No liability of any kind is to be imposed on the broker herein.

# NASSAU BAY TOWN SQUARE

SPACE PARK AT UPPER BAY DRIVE, NASSAU BAY, TEXAS 77058



## Information About Brokerage Services

Approved by the Texas Real Estate Commission for Voluntary Use Texas law requires all real estate licensees to give the following information about brokerage services to prospective buyers, tenants, sellers and landlords.

### TYPES OF REAL ESTATE LICENSE HOLDERS:

- A BROKER is responsible for all brokerage activities, including acts performed by sales agents sponsored by the broker.
- A SALES AGENT must be sponsored by a broker & works with clients on behalf of the broker.

### A BROKER'S MINIMUM DUTIES REQUIRED BY LAW (A client is the person or party that the broker represents):

- Put the interests of the client above all others, including the broker's own interests;
- Inform the client of any material information about the property or transaction received by the broker;
- Answer the client's questions & present any offer to or counter-offer from the client; &
- Treat all parties to a real estate transaction honestly & fairly.

### A LICENSE HOLDER CAN REPRESENT A PARTY IN A REAL ESTATE TRANSACTION:

**AS AGENT FOR OWNER (SELLER/L&LORD):** The broker becomes the property owner's agent through an agreement with the owner, usually in a written listing to sell or property management agreement. An owner's agent must perform the broker's minimum duties above & must inform the owner of any material information about the property or transaction known by the agent, including information disclosed to the agent or subagent by the buyer or buyer's agent.

**AS AGENT FOR BUYER/TENANT:** The broker becomes the buyer/tenant's agent by agreeing to represent the buyer, usually through a written representation agreement. A buyer's agent must perform the broker's minimum duties above & must inform the buyer of any material information about the property or transaction known by the agent, including information disclosed to the agent by the seller or seller's agent.

**AS AGENT FOR BOTH - INTERMEDIARY:** To act as an intermediary between the parties the broker must first obtain the written

agreement of each party to the transaction. The written agreement must state who will pay the broker &, in conspicuous bold or underlined print, set forth the broker's obligations as an intermediary. A broker who acts as an intermediary:

- Must treat all parties to the transaction impartially & fairly;
- May, with the parties' written consent, appoint a different license holder associated with the broker to each party (owner & buyer) to communicate with, provide opinions & advice to, & carry out the instructions of each party to the transaction.
- Must not, unless specifically authorized in writing to do so by the party, disclose:
  - o That the owner will accept a price less than the written asking price;
  - o That the buyer/tenant will pay a price greater than the price submitted in a written offer; &
  - o Any confidential information or any other information that a party specifically instructs the broker in writing not to disclose, unless required to do so by law.

**AS SUBAGENT:** A license holder acts as a subagent when aiding a buyer in a transaction without an agreement to represent the buyer. A subagent can assist the buyer but does not represent the buyer & must place the interests of the owner first.

### TO AVOID DISPUTES, ALL AGREEMENTS BETWEEN YOU & A BROKER SHOULD BE IN WRITING & CLEARLY ESTABLISH:

- The broker's duties & responsibilities to you, & your obligations under the representation agreement.
- Who will pay the broker for services provided to you, when payment will be made & how the payment will be calculated

**LICENSE HOLDER CONTACT INFORMATION:** This notice is being provided for information purposes. It does not create an obligation for you to use the broker's services. Please acknowledge receipt of this notice below & retain a copy for your record.

DFW Lee & Associates, LLC - Houston Office Licensed Broker/Broker Firm Name or Primary Assumed Business Name	9003955 License No.	E-Mail	(713) 744-7400 Phone
Ken Wesson, SIOR, CCIM Designated Broker of Firm	439839 License No.	kwesson@lee-associates.com E-Mail	(972) 934-4000 Phone
Licensed Supervisor of Sales Agent/Associate	License No.	E-Mail	Phone
Sales Agent/Associate's Name	License No.	E-Mail	Phone
Buyer/Tenant Initials/Seller/Landlord Initials	Date		

Texas Real Estate Brokers and Salespersons are licensed and regulated by the Texas Real Estate Commission (TREC). If you have a question or complaint regarding a real estate licensee, you should contact TREC at P.O. Box 12188, Austin, Texas 78711-2188, 512-936-3000 (<http://www.trec.texas.gov>)

**Drew Lewis** | Principal  
dlewis@lee-associates.com  
D 713.744.7406

All information furnished regarding property for sale, rental or financing is from sources deemed reliable, but no warranty or representation is made to the accuracy thereof and same is submitted to errors, omissions, change of price, rental or other conditions prior to sale, lease or financing or withdrawal without notice. No liability of any kind is to be imposed on the broker herein.