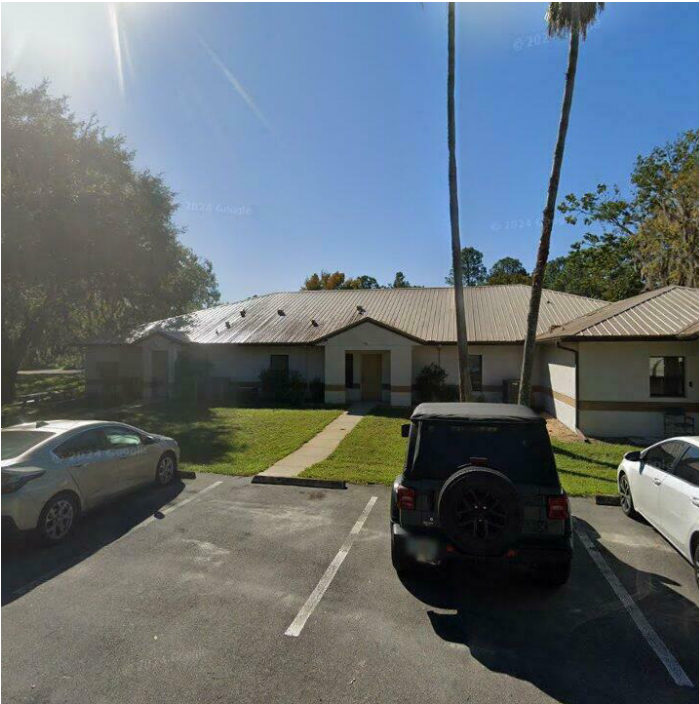


SALE

PALATKA MEDICAL/OFFICE CONDO

205 Zeagler Drive 302 303 Palatka, FL 32177



OFFERING SUMMARY

Sale Price:	\$669,000
Building Size:	3,576 SF
Price / SF:	\$187.08
Year Built:	1992
Zoning:	Commercial

PROPERTY OVERVIEW

3,576 SF Medical/Professional office condo for sale. Currently occupied by tenant with a month to month rental agreement. Perfect for owner occupied or long term rental.

LOCATION OVERVIEW

Located in Palatka between Flagler/Palm Coast/Marineland and Gainesville. Busy area along the St. Johns River.

PROPERTY HIGHLIGHTS

- Great Palatka Location
- Medical Condo
- Owner / Occupant Opportunity

DEMOGRAPHICS	0.3 MILES	0.5 MILES	1 MILE
Total Households	225	527	1,076
Total Population	574	1,343	2,732
Average HH Income	\$35,449	\$36,183	\$38,908

Scott Harter

Commercial Broker/Associate
O: (386) 672-8530 | C: (386) 290-6994
dscottharter@gmail.com

C. Courie Woodard

Comm Sales Associate
O: (386) 672-8530 | C: (386) 481-4801
cwoodard@cbcbenchmark.com



**COLDWELL BANKER
COMMERCIAL**
BENCHMARK