

# 375 Stonecrest Parkway

## Entry Perspective



# 375 Stonecrest Parkway

---

## Medical Office Building



*Design architect, Hayden Architecture & Interiors LLC, has developed a three dimensional image to illustrate the building's appearance. The building exteriors will be articulated with quality brick detailing to give the building a high level of distinction. The high quality and appearance of each building will be visually related sharing common elements to create a more cohesive environment. Quality, location and visibility will combine to make this the perfect location for the future success of your business.*

# 375 Stonecrest Parkway



## *Arial View*

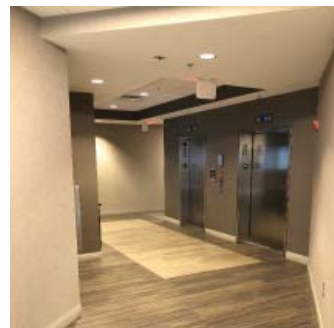
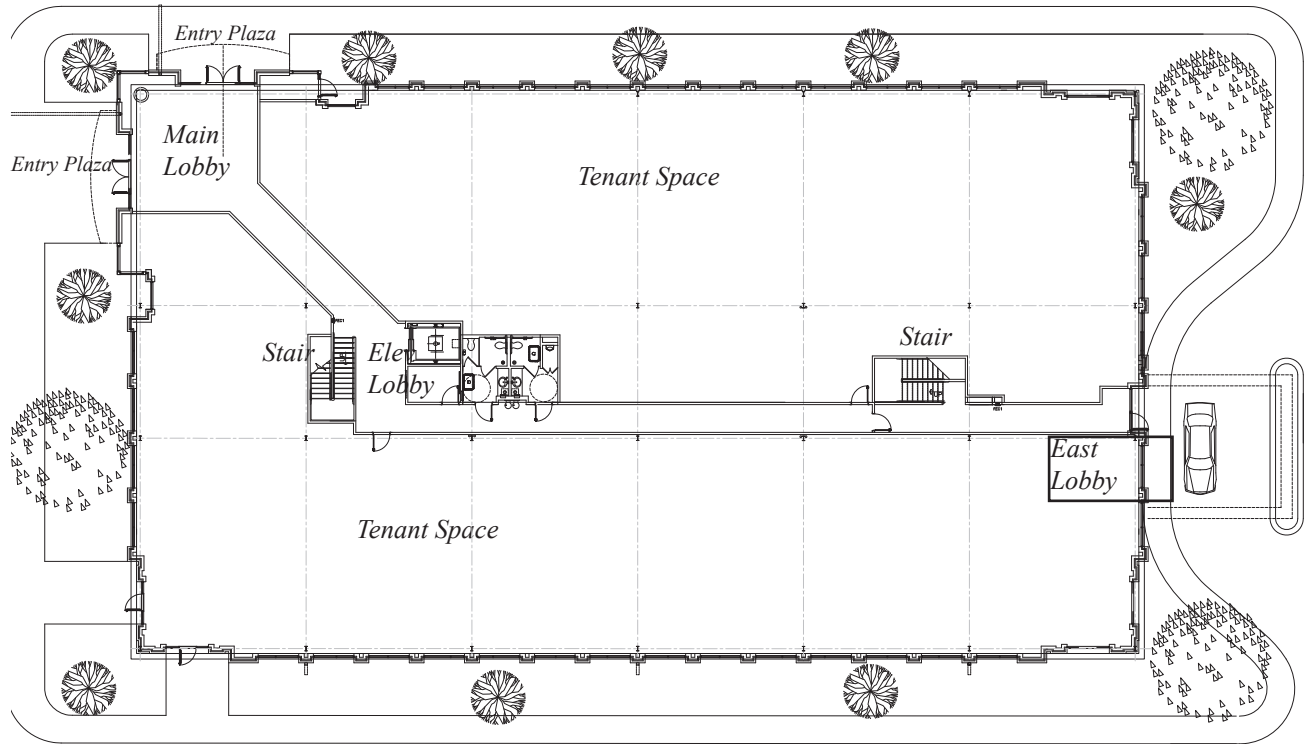
*Drawing Not to Scale*

*The proposed site for this project is located near the intersection of Sam Ridley Parkway and Stonecrest Parkway in Smyrna, Tennessee. The location provides high visibility, easy access and all of conveniences nearby. The driveway is accross the street from the secondary access to Stonecrest Medical Center. Parking is provided at a blended ratio of 4 spaces per 1000 SF of building area for the proposed building and Smyrna Medical Plaza. The spaces are distributed around the building so that patients and staff will have a short walk to any of the building entrances.*

*AGILITAS Property Development*

# 375 Stonecrest Parkway

## First Floor Plan



### Lobby Images

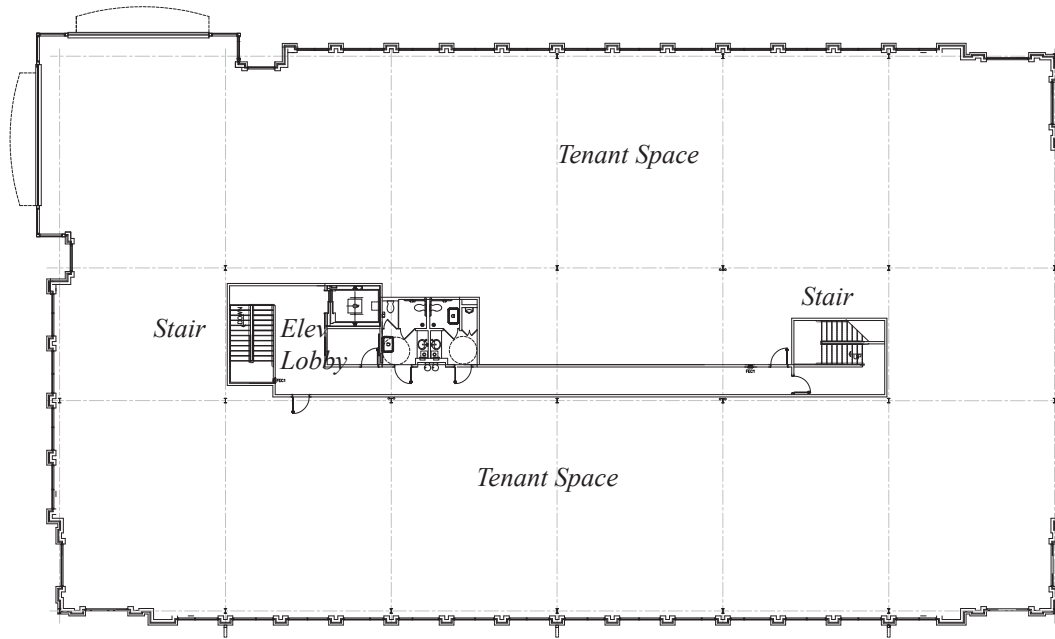
*Drawing Not to Scale*

*These is a pictures are of another recent build-  
ing lobby to illustrate the quality of finish that will  
be applied to the lobby of 375 Stonecrest Parkway.*

*AGILITAS Property Development*

# 375 Stonecrest Parkway

## Second Floor Plan



*Drawing Not to Scale*