

Proposed Redevelopment

±0.88 Acres Available

17641 West 12 Mile Road
Lathrup Village, MI 48076

Located at the SEC of West 12 Mile and Southfield Road



Proposed Redevelopment

17641 W 12 Mile Rd | Lathrup Village, MI 48076

For Lease

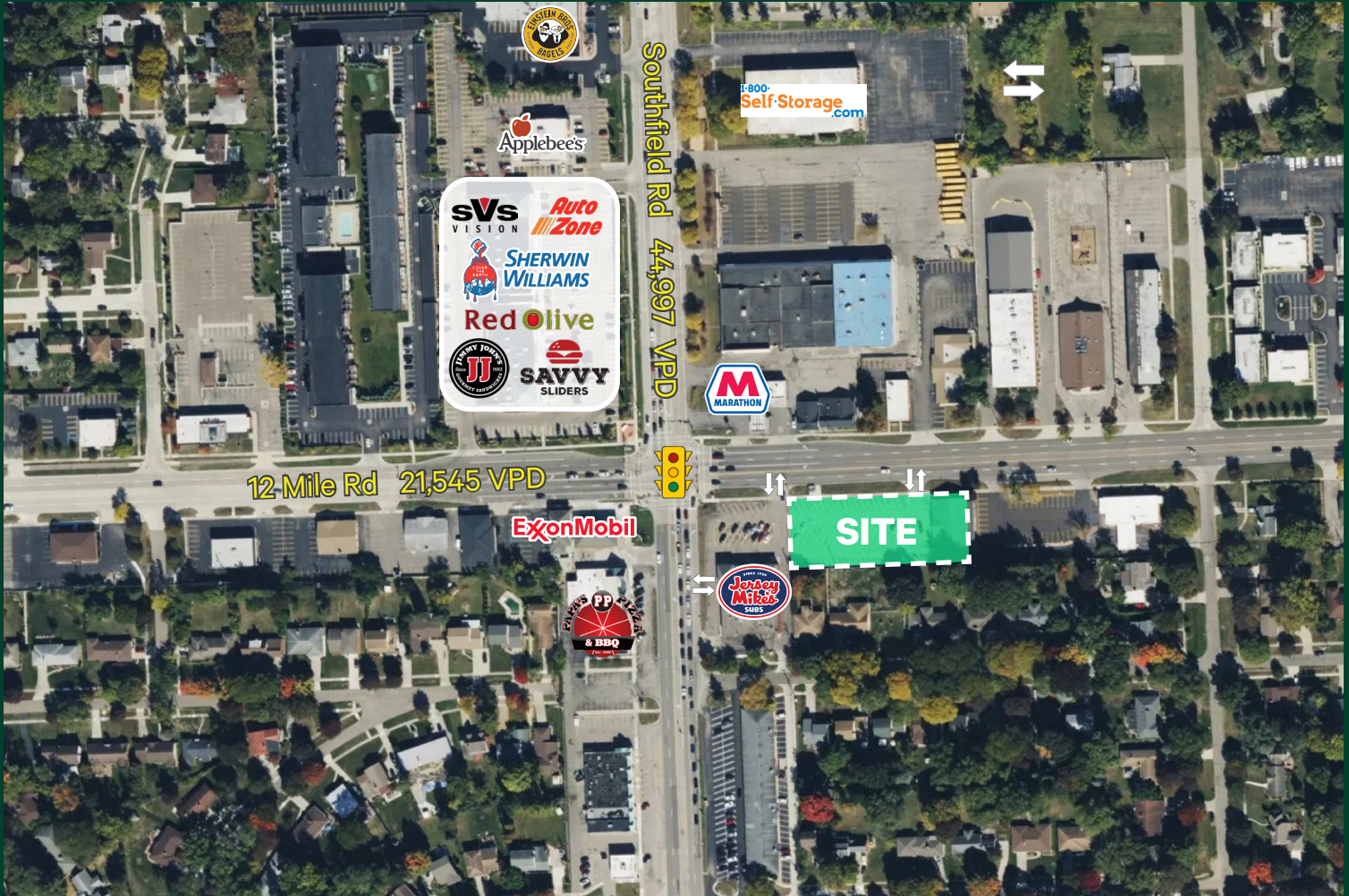
Property Highlights

- + 0.88-Acre parcel available for proposed redevelopment
- + Located at the SEC of W 12 Mile and Southfield Road, with traffic counts exceeding 65,000+ VPD
- + Ample parking spaces and cross-parking
- + Nearby retailers include Kroger, Meijer, Lowe's, Target, The Home Depot, and many more!
- + **Ground Lease Rate: \$165,000 Per Year NNN**

Macro Aerial



Micro Aerial



2025 Demographics	1 Mile	3 Miles	5 Miles
Population	12,719	109,942	285,347
Number of Households	6,043	50,574	137,654
Average Household Size	2.19	2.25	2.18
Average Household Income	\$110,652	\$133,325	\$127,256
Daytime Population	13,492	129,339	339,809

Property Photos



Contact Us

Scott Young
Senior Vice President
+1 248 936 6832
scott.young@cbre.com

Matt Crowell
First Vice President
+1 248 351 2084
matt.crowell@cbre.com

Ashley Young
Vice President
+1 248 353 5400
ashley.young@cbre.com

Jake Vorkapich
Transaction Manager
+1 248 351 2071
jake.vorkapich@cbre.com

© 2025 CBRE, Inc. All rights reserved. This information has been obtained from sources believed reliable but has not been verified for accuracy or completeness. CBRE, Inc. makes no guarantee, representation or warranty and accepts no responsibility or liability as to the accuracy, completeness, or reliability of the information contained herein. You should conduct a careful, independent investigation of the property and verify all information. Any reliance on this information is solely at your own risk. CBRE and the CBRE logo are service marks of CBRE, Inc. All other marks displayed on this document are the property of their respective owners, and the use of such marks does not imply any affiliation with or endorsement of CBRE. Photos herein are the property of their respective owners. Use of these images without the express written consent of the owner is prohibited.