

# PHYSICIANS SPECIALTY CENTER

3400 I-30  
Mesquite, TX 75150

## Medical For Lease

1,567 - 8,300 SF



Leasing Information:  
214.461.2300

**Peter Shaw**  
214.461.2302  
PShaw@lpc.com

**Banks Newton**  
214.461.2388  
bnewton@lpc.com

**Elizabeth Madden**  
214.461.2366  
emadden@lpc.com

# Lincoln

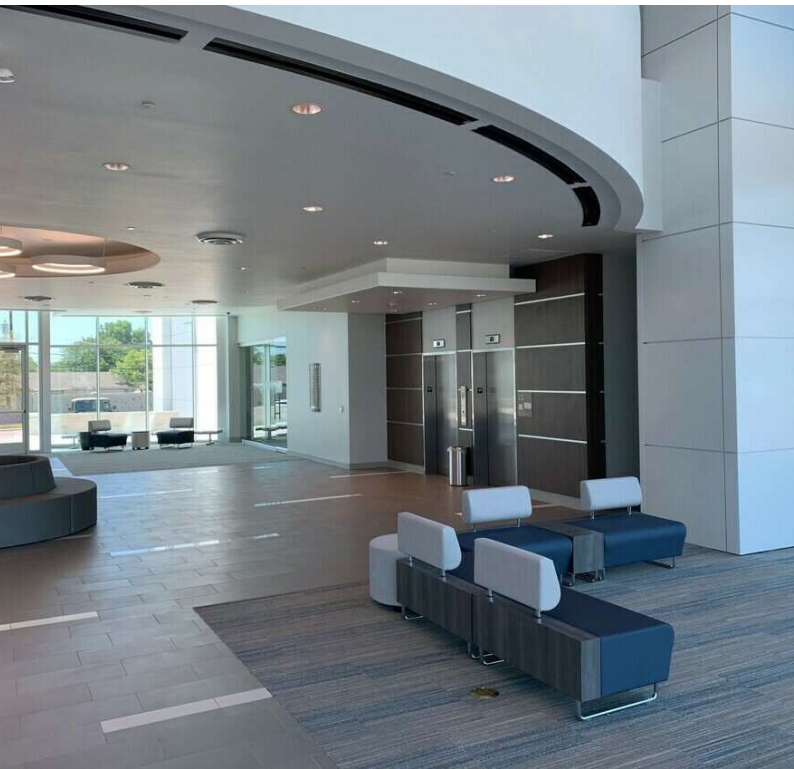
Lincoln Property Company  
8140 Walnut Hill Lane Suite 700  
Dallas, TX 75231

[www.lpc.com](http://www.lpc.com)

# PHYSICIANS SPECIALTY CENTER

## Available Space Summary

3400 I-30 | Mesquite, TX 75150



Availabilities	SF	Lease Rate
180	2,025 SF	Negotiable
190	5,600 - 8,300 SF	Negotiable
210	1,880 SF	Negotiable
290	1,567 SF	Negotiable
380	2,913 SF	Negotiable
390	2,328 SF	Negotiable

### Property Highlights

- Highly Visible from Interstate 30
- Excellent patient accessibility
- Turn Key full finished medical suites
- Full service imaging center
- ASC with 3 OR's & 2 procedure rooms
- Anchored by an Ambulatory Surgery Center and State-of-the-art Full-Service Diagnostic Imaging Center
- Fully built out spec suites ranging from 1,300-8,300 SF
- Building signage and monument signage available for new tenants

**Peter Shaw**

214.461.2302  
Pshaw@lpc.com

**Banks Newton**

214.461.2388  
bnewton@lpc.com

**Elizabeth Madden**

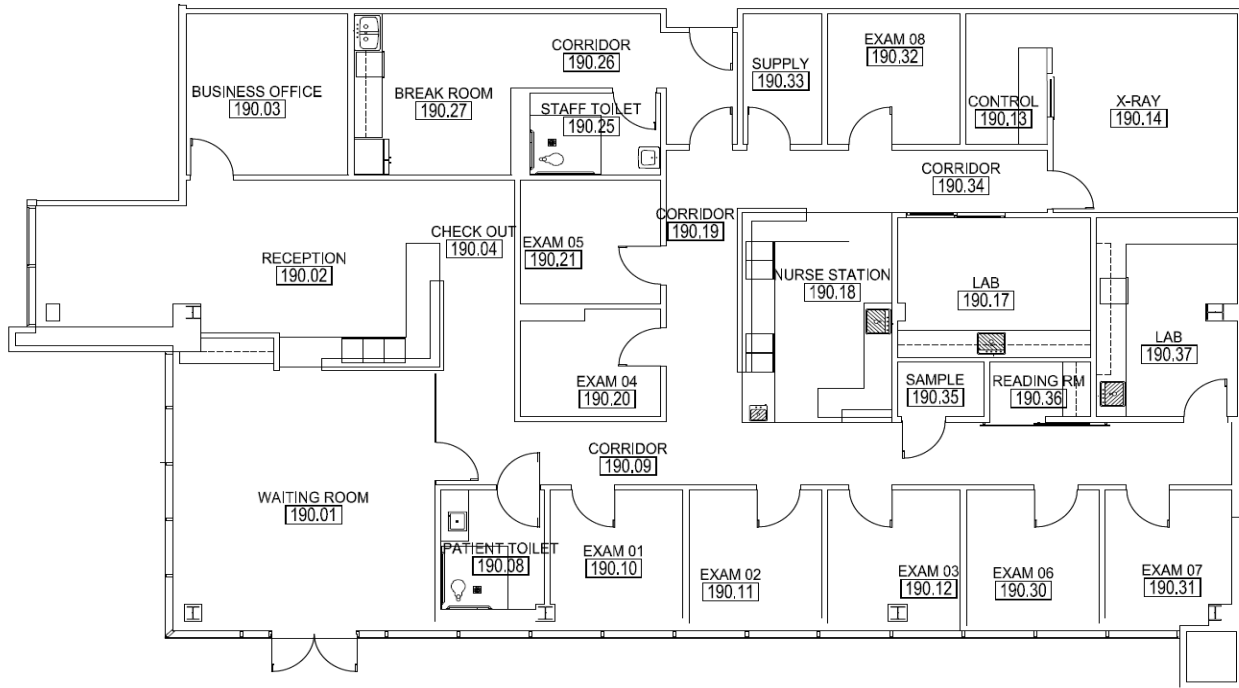
214.461.2366  
emadden@lpc.com

**Lincoln**

# PHYSICIANS SPECIALTY CENTER

Suite 190

3400 I-30 | Mesquite, TX 75150



Suite	Size
190	5,600 - 8,300 SF

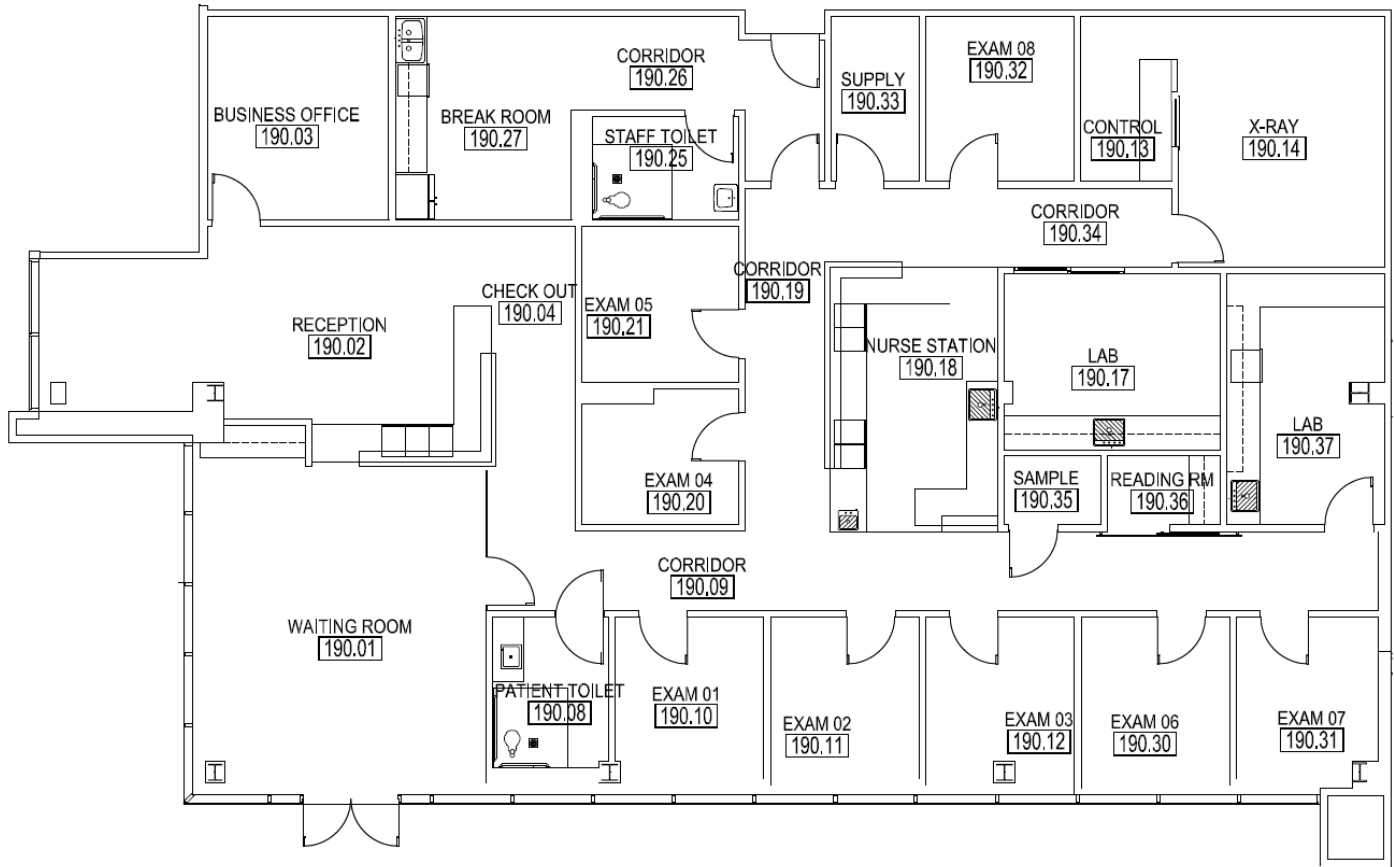
**Peter Shaw**    **Banks Newton**    **Elizabeth Madden**  
 214.461.2302    214.461.2388    214.461.2366  
 PShaw@lpc.com    bnewton@lpc.com    emadden@lpc.com

**Lincoln**

# PHYSICIANS SPECIALTY CENTER

Suite 190

3400 I-30 | Mesquite, TX 75150



Suite	Size
190	5,600 - 8,300 SF

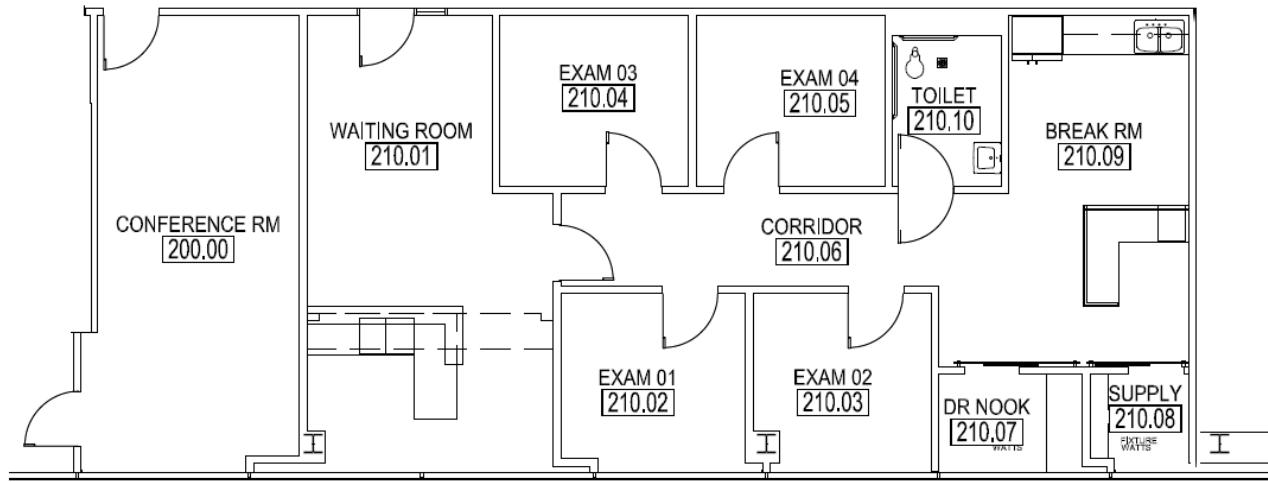
**Peter Shaw**      **Banks Newton**      **Elizabeth Madden**  
 214.461.2302      214.461.2388      214.461.2366  
 Pshaw@lpc.com      bnewton@lpc.com      emadden@lpc.com

**Lincoln**

# PHYSICIANS SPECIALTY CENTER

Suite 210

3400 I-30 | Mesquite, TX 75150



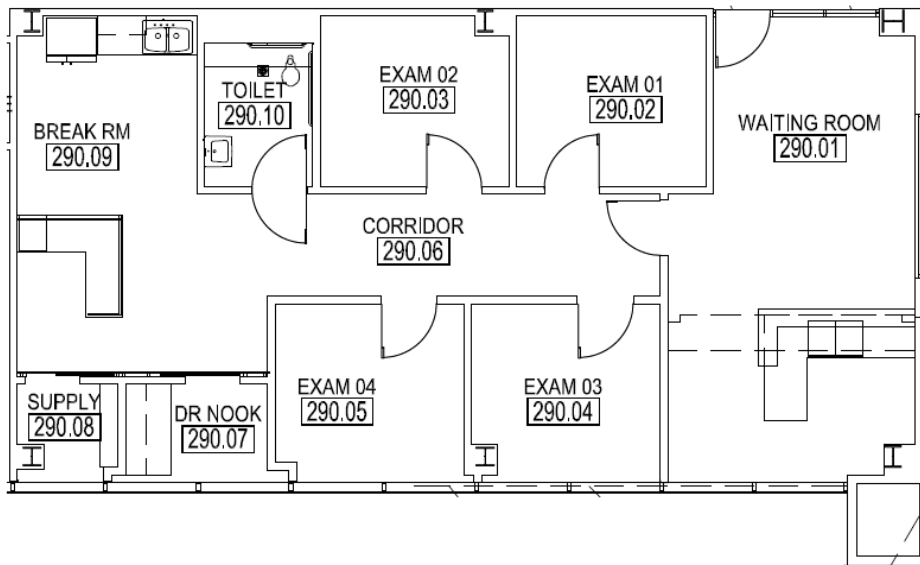
**Peter Shaw**      **Banks Newton**      **Elizabeth Madden**  
214.461.2302      214.461.2388      214.461.2366  
Pshaw@lpc.com      bnewton@lpc.com      emadden@lpc.com

**Lincoln**

# PHYSICIANS SPECIALTY CENTER

Suite 290

3400 I-30 | Mesquite, TX 75150



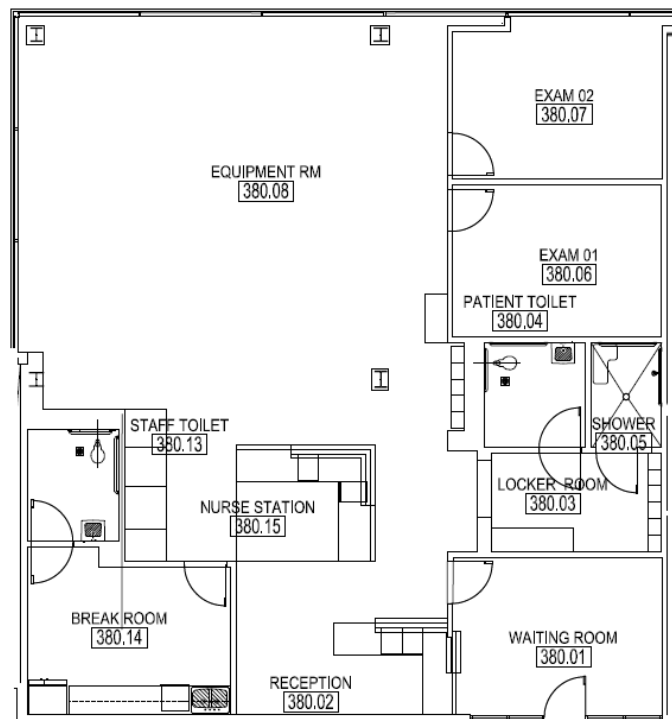
**Peter Shaw**      **Banks Newton**      **Elizabeth Madden**  
214.461.2302      214.461.2388      214.461.2366  
Pshaw@lpc.com      bnewton@lpc.com      emadden@lpc.com

**Lincoln**

# PHYSICIANS SPECIALTY CENTER

Suite 380

3400 I-30 | Mesquite, TX 75150



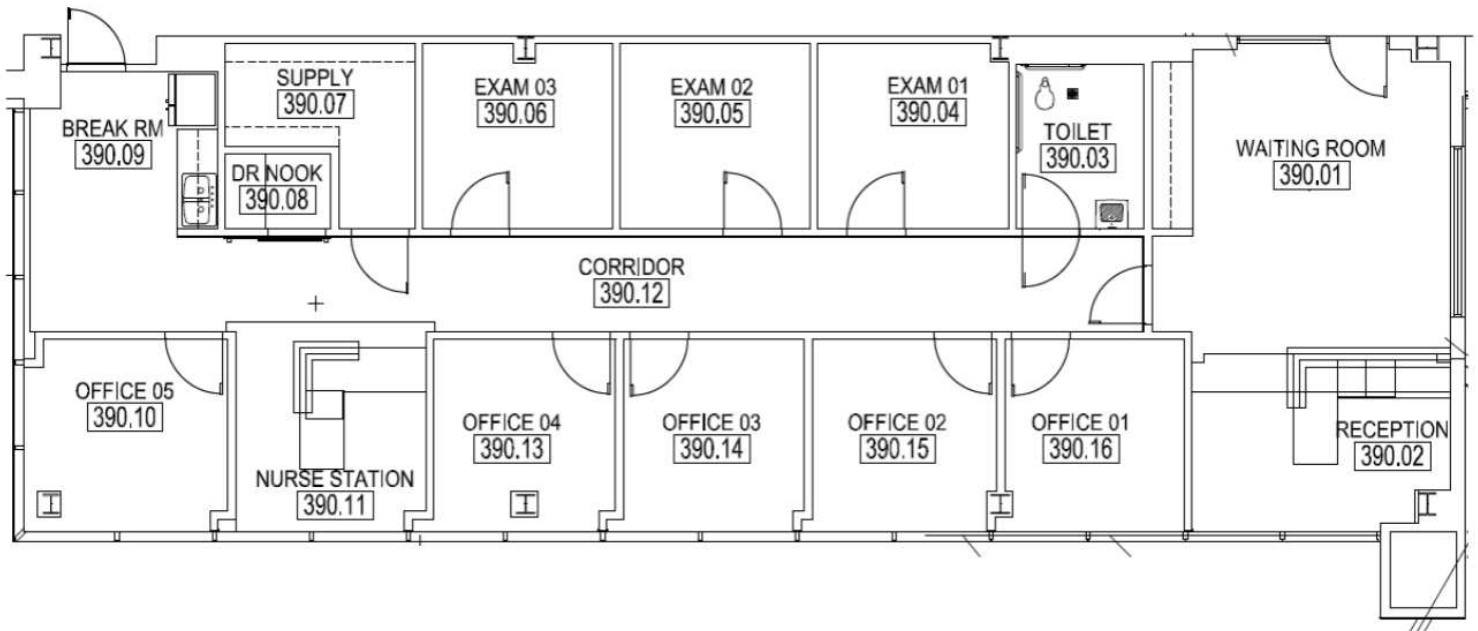
**Peter Shaw**      **Banks Newton**      **Elizabeth Madden**  
214.461.2302      214.461.2388      214.461.2366  
PShaw@lpc.com      bnewton@lpc.com      emadden@lpc.com

**Lincoln**

# PHYSICIANS SPECIALTY CENTER

Suite 390

3400 I-30 | Mesquite, TX 75150



**Peter Shaw**      **Banks Newton**      **Elizabeth Madden**  
214.461.2302      214.461.2388      214.461.2366  
Pshaw@lpc.com      bnewton@lpc.com      emadden@lpc.com

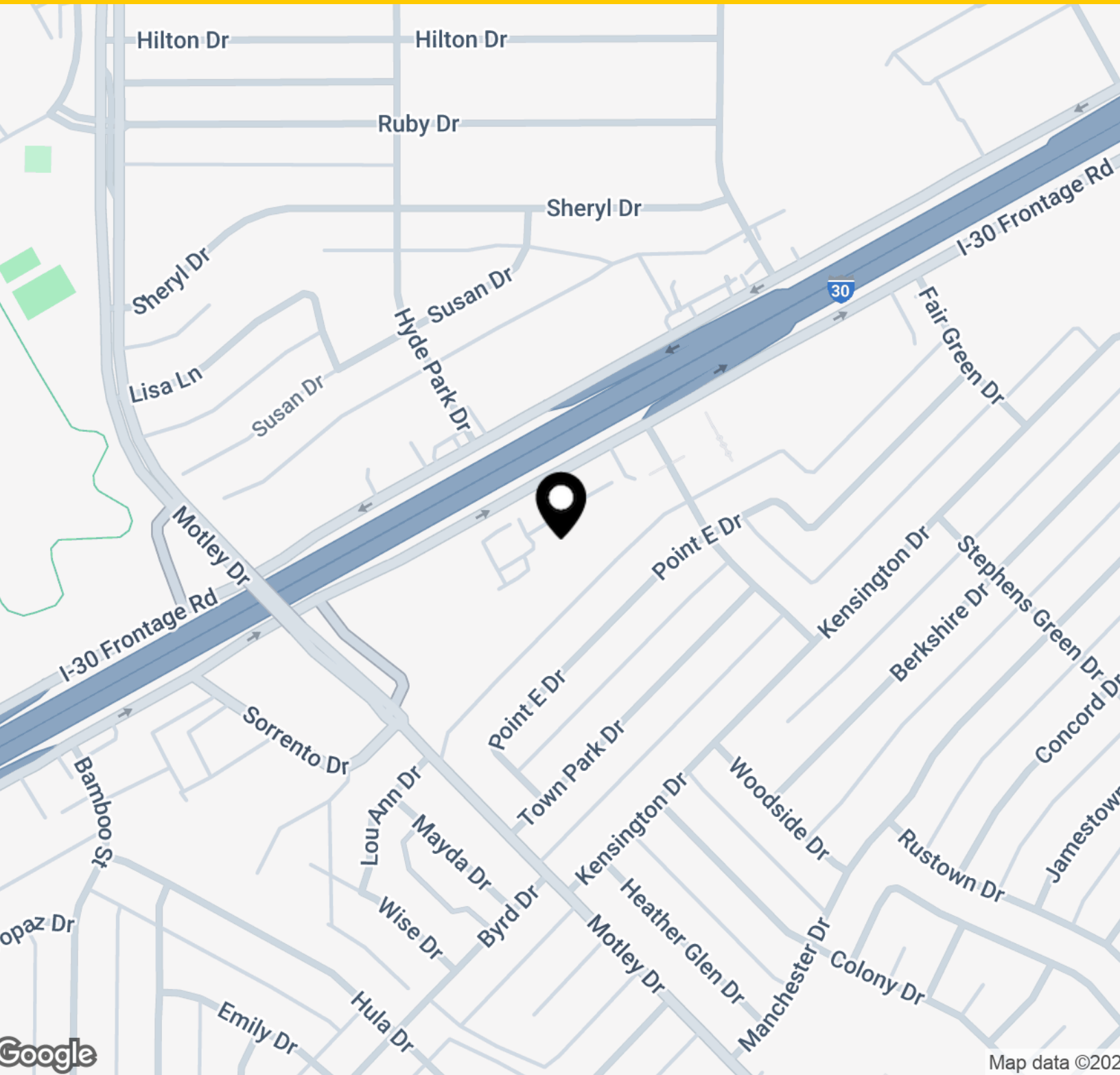
## Lincoln



# PHYSICIANS SPECIALTY CENTER

## Location Map

3400 I-30 | Mesquite, TX 75150



**Peter Shaw**

214.461.2302  
PShaw@lpc.com

**Banks Newton**

214.461.2388  
bnewton@lpc.com

**Elizabeth Madden**

214.461.2366  
emadden@lpc.com

# Lincoln



# PHYSICIANS SPECIALTY CENTER

3400 I-30  
Mesquite, TX 75150

Leasing Information:  
214.461.2300

**Peter Shaw**  
214.461.2302  
PShaw@lpc.com

**Banks Newton**  
214.461.2388  
bnewton@lpc.com

**Elizabeth Madden**  
214.461.2366  
emadden@lpc.com

## Lincoln

Lincoln Property Company  
8140 Walnut Hill Lane Suite 700  
Dallas, TX 75231

[www.lpc.com](http://www.lpc.com)