



1710 N RANDALL ROAD
ELGIN



MEDICAL OFFICE LEASE OPPORTUNITY AVAILABLE

Property Highlights

Directly connected to care, Randall Medical Building offers 66,137 SF of premier medical office space, located adjacent to Advocate Sherman Hospital, a key facility within the Advocate Health System.



MEDICAL OFFICE SUITES AVAILABLE



5.26/1,000 PARKING RATIO



DIRECTLY OFF I-90 EXPRESSWAY



RANDALL ROAD FRONTAGE

KAROLINE EIGEL

+1 312 470 2302

Karoline.Eigel@cushwake.com

JOSH CRANE

+1 312 424 8151

Josh.Crane@cushwake.com

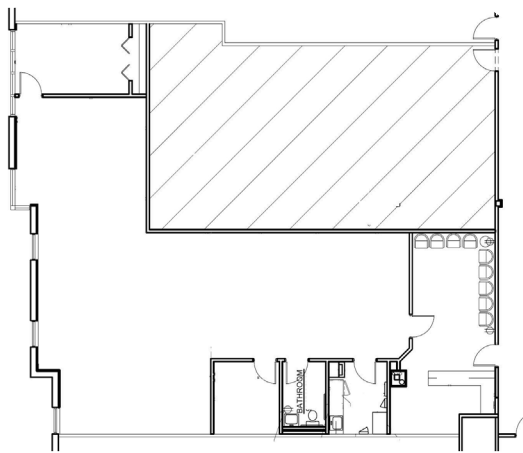
healthpeakportfolioil.com



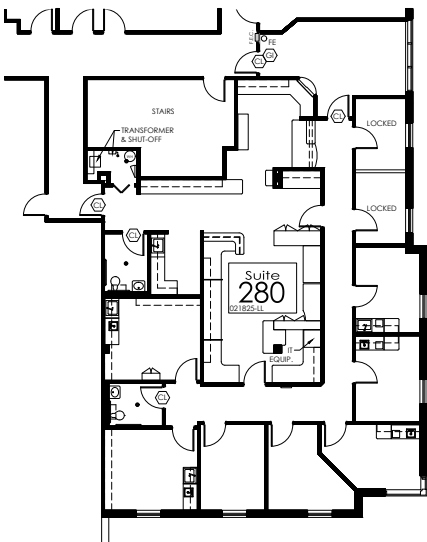
Healthpeak® | DOC LISTED NYSE

Available Space

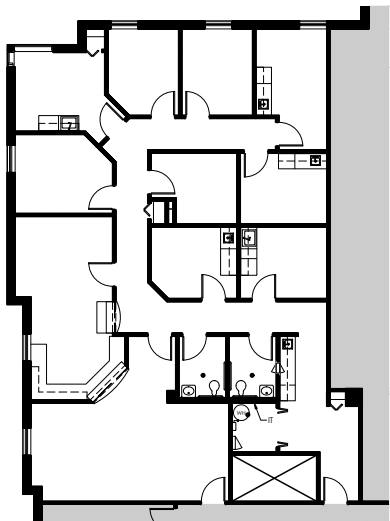
SUITE 230 | 2,507 RSF



SUITE 280 | 2,844 RSF



SUITE 330 | 2,579 RSF



SUITE 360 | 4,431 RSF





Proximity With Purpose

With 14,874 SF of medical office space located immediately adjacent to Advocate Sherman Hospital and directly off the I-90 expressway, Randall Medical Building delivers the ideal address for healthcare providers connected to the Advocate Health Care System.



KAROLINE EIGEL

+1 312 470 2302

Karoline.Eigel@cushwake.com

JOSH CRANE

+1 312 424 8151

Josh.Crane@cushwake.com

healthpeakportfolioil.com



Healthpeak® | **DOC**
LISTED
NYSE

©2025 Cushman & Wakefield. All rights reserved. The information contained in this communication is strictly confidential. This information has been obtained from sources believed to be reliable but has not been verified. NO WARRANTY OR REPRESENTATION, EXPRESS OR IMPLIED, IS MADE AS TO THE CONDITION OF THE PROPERTY (OR PROPERTIES) REFERENCED HEREIN OR AS TO THE ACCURACY OR COMPLETENESS OF THE INFORMATION CONTAINED HEREIN, AND SAME IS SUBMITTED SUBJECT TO ERRORS, OMISSIONS, CHANGE OF PRICE, RENTAL OR OTHER CONDITIONS, WITHDRAWAL WITHOUT NOTICE, AND TO ANY SPECIAL LISTING CONDITIONS IMPOSED BY THE PROPERTY OWNER(S). ANY PROJECTIONS, OPINIONS OR ESTIMATES ARE SUBJECT TO UNCERTAINTY AND DO NOT SIGNIFY CURRENT OR FUTURE PROPERTY PERFORMANCE.