

FOR LEASE: APPROXIMATELY 5,436 SF INDUSTRIAL SUITE

**2151** ENTERPRISE STREET  
ESCONDIDO, CA 92029

**PC**  
**PALOMAR**  
COMMERCIAL  
BUSINESS REAL ESTATE SERVICES



**PC**  
**PALOMAR**  
COMMERCIAL

**Justin Beattie**  
Palomar Commercial | Lic #01522337  
📧 [jbeattie@palomarcommercial.com](mailto:jbeattie@palomarcommercial.com)  
☎ 760.918.2600

**LEE & ASSOCIATES**  
COMMERCIAL REAL ESTATE SERVICES

**Barry Hendler**  
Lee & Associates | Lic #01008239  
📧 [bhendler@lee-associates.com](mailto:bhendler@lee-associates.com)  
☎ 760.845.3854

**Colliers**  
INTERNATIONAL

**Mike Erwin**  
Colliers | Lic #01242826  
📧 [mike.erwin@colliers.com](mailto:mike.erwin@colliers.com)  
☎ 760.930.7971





### PROPERTY HIGHLIGHTS

- Highly functional, modern era Escondido industrial suite for lease
- Two over-sized (14' wide) roll-up doors
- Approximately 25% improved with office
- High image, professional corporate headquarters project feel
- Approximately 16' clear height
- Drive-around truck access
- Suite to be refurbished upon move-out of existing tenant
- Excellent access to Interstate 15, Highway 78, Del Dios Highway and Elfin Forest
- LEASE RATE: \$1.65/SF (NO CAM CHARGE)



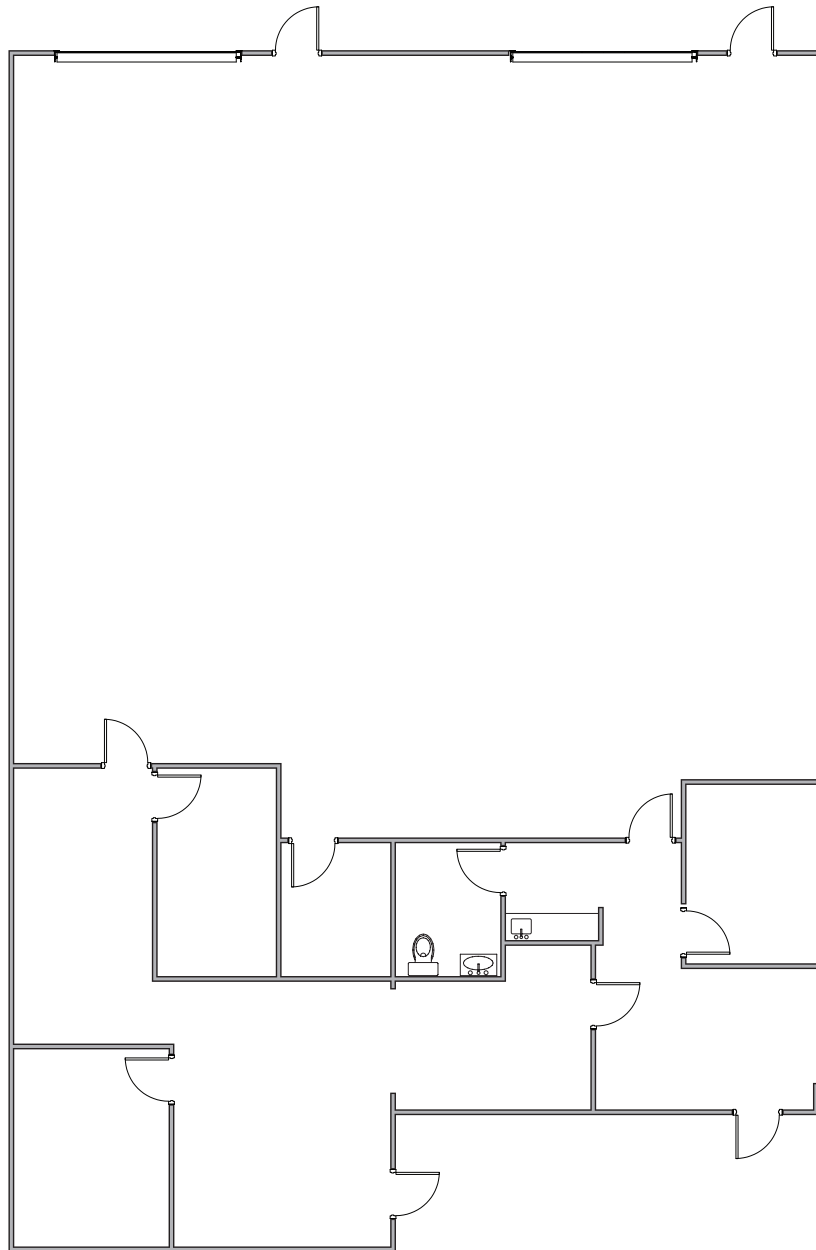
**Justin Beattie**  
 Palomar Commercial | Lic #01522337  
 📧 jbeattie@palomarcommercial.com  
 ☎ 760.918.2600



**Barry Hendler**  
 Lee & Associates | Lic #01008239  
 📧 bhendler@lee-associates.com  
 ☎ 760.845.3854



**Mike Erwin**  
 Colliers | Lic #01242826  
 📧 mike.erwin@colliers.com  
 ☎ 760.930.7971



**Justin Beattie**  
Palomar Commercial | Lic #01522337  
✉ jbeattie@palomarcommercial.com  
☎ 760.918.2600



**Barry Hendler**  
Lee & Associates | Lic #01008239  
✉ bhendler@lee-associates.com  
☎ 760.845.3854



**Mike Erwin**  
Colliers | Lic #01242826  
✉ mike.erwin@colliers.com  
☎ 760.930.7971



# 2151 ENTERPRISE STREET

ESCONDIDO, CA 92029

## LOCATION



**Justin Beattie**  
Palomar Commercial | Lic #01522337  
📧 [jbeattie@palomarcommercial.com](mailto:jbeattie@palomarcommercial.com)  
📞 760.918.2600



**Barry Hendler**  
Lee & Associates | Lic #01008239  
📧 [bhendler@lee-associates.com](mailto:bhendler@lee-associates.com)  
📞 760.845.3854



**Mike Erwin**  
Colliers | Lic #01242826  
📧 [mike.erwin@colliers.com](mailto:mike.erwin@colliers.com)  
📞 760.930.7971