

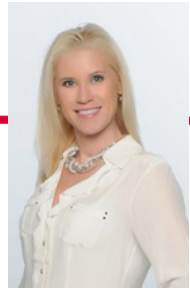
# COMMERCIAL LOTS FOR SALE

Shovel Ready  
1.17 to 5.27 Acres  
City Utilities  
\$500/Year HOA Fee  
\$500 Start Up Fee

1 Mile to I380 Interchange  
0.6 Miles to County Home Rd  
3 Miles to Tower Terrace Rd  
4.5 Miles to Boyson Rd



**EAGLE VIEW DEVELOPMENT  
ROBINS, IA 52328**



**HEATHER MORRIS, REALTOR®**  
(319) 350-7653  
heather@heathermorrisrealtor.com  
www.heathermorrisrealtor.com

417 1st Avenue SE | Cedar Rapids, IA 52401  
[www.skogmancommercial.com](http://www.skogmancommercial.com)

**SKOGMAN**  
COMMERCIAL

Information received or derived from Skogman agents and or companies is provided without representation or warranty. Each party shall conduct their own due diligence for accuracy, condition, compliance or lack of, applicable suitability, and financial performance.

## EAGLE VIEW LOT DETAILS

Lot	Address	Acreage	Build Acre	Buildable Sq. Ft.	Price	Curb Width	CR MLS, IC MLS
1	3350 Eagle View Court	3.00 Acres	2.58 Acres	112,335	\$500,000	278.69'	2204736, 202206031
2	3300 Eagle View Court	2.86 Acres	2.69 Acres	117,275	\$500,000	317.3'	2204737, 202206033
3	3250 Eagle View Court	3.38 Acres	3.03 Acres	131,937	\$500,000	147'	2204738, 202206034
4	3200 Eagle View Court	5.27 Acres	4.27 Acres	186,202	\$500,000	507.5'	2204739, 202206035
5	3150 Eagle View Court	1.83 Acres	1.50 Acres	65,535	SPEC	326.38'	SPEC
6	3100 Eagle View Court	1.57 Acres	1.46 Acres	63,445	SPEC	195.36'	SPEC
7	3050 Eagle View Court	1.80 Acres	1.69 Acres	73,480	SOLD	101'	SOLD
8	3040 Eagle View Court	1.59 Acres	1.19 Acres	51,860	\$150,000	70'	2204743, 202206049
9	3151 Eagle View Court	3.00 Acres	1.87 Acres	81,660	\$275,000	129.2'	2204744, 202206050
10	3201 Eagle View Court	3.37 Acres	1.68 Acres	--	SOLD	--	SOLD
11	3251 Eagle View Court	0.10 Acres	--	--	SOLD	--	SOLD
12	3301 Eagle View Court	2.17 Acres	1.57 Acres	68,524	\$275,000	359.68'	2204745, 202206051
13	3351 Eagle View Court	2.01 Acres	1.63 Acres	71,132	SOLD	268.31'	SOLD
14	3260 Center Point Rd	2.78 Acres	0.96 Acres	41,701	\$175,000	158.97'	2204747, 202206053

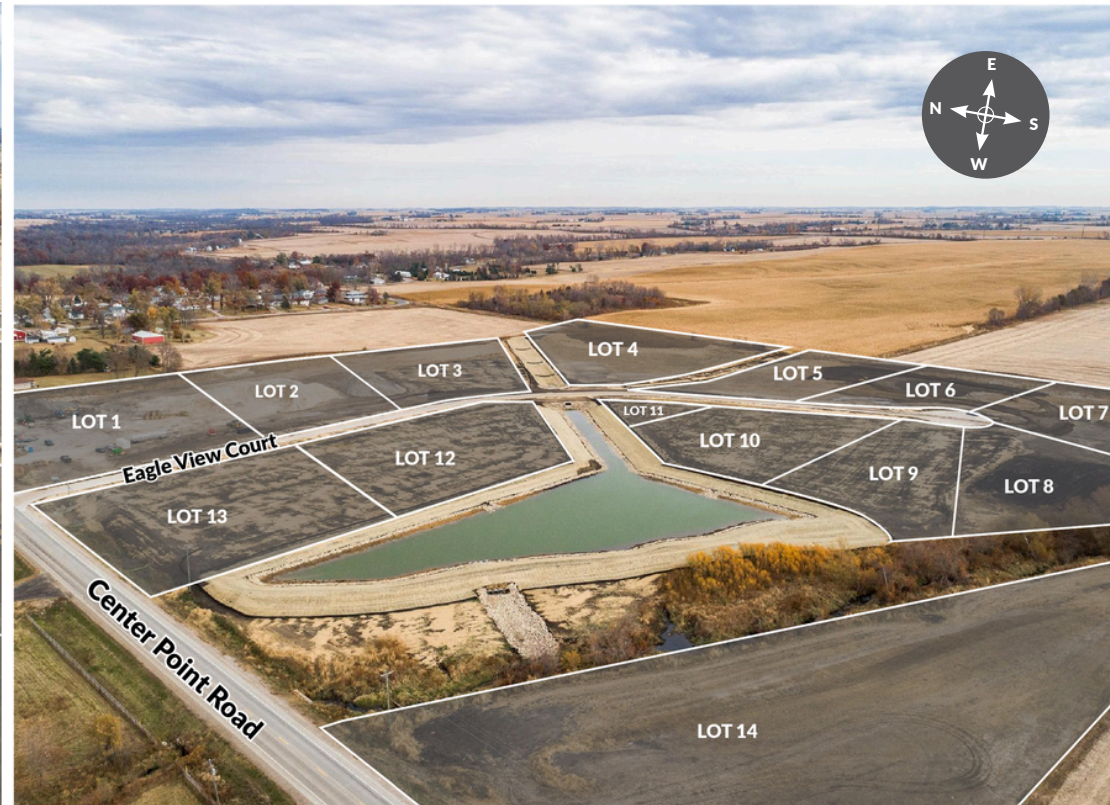
**HEATHER MORRIS, REALTOR®**

(319) 350-7653

heather@heathermorrisrealtor.com | www.heathermorrisrealtor.com

417 1st Avenue SE | Cedar Rapids, IA 52401 | [www.skogmancommercial.com](http://www.skogmancommercial.com)





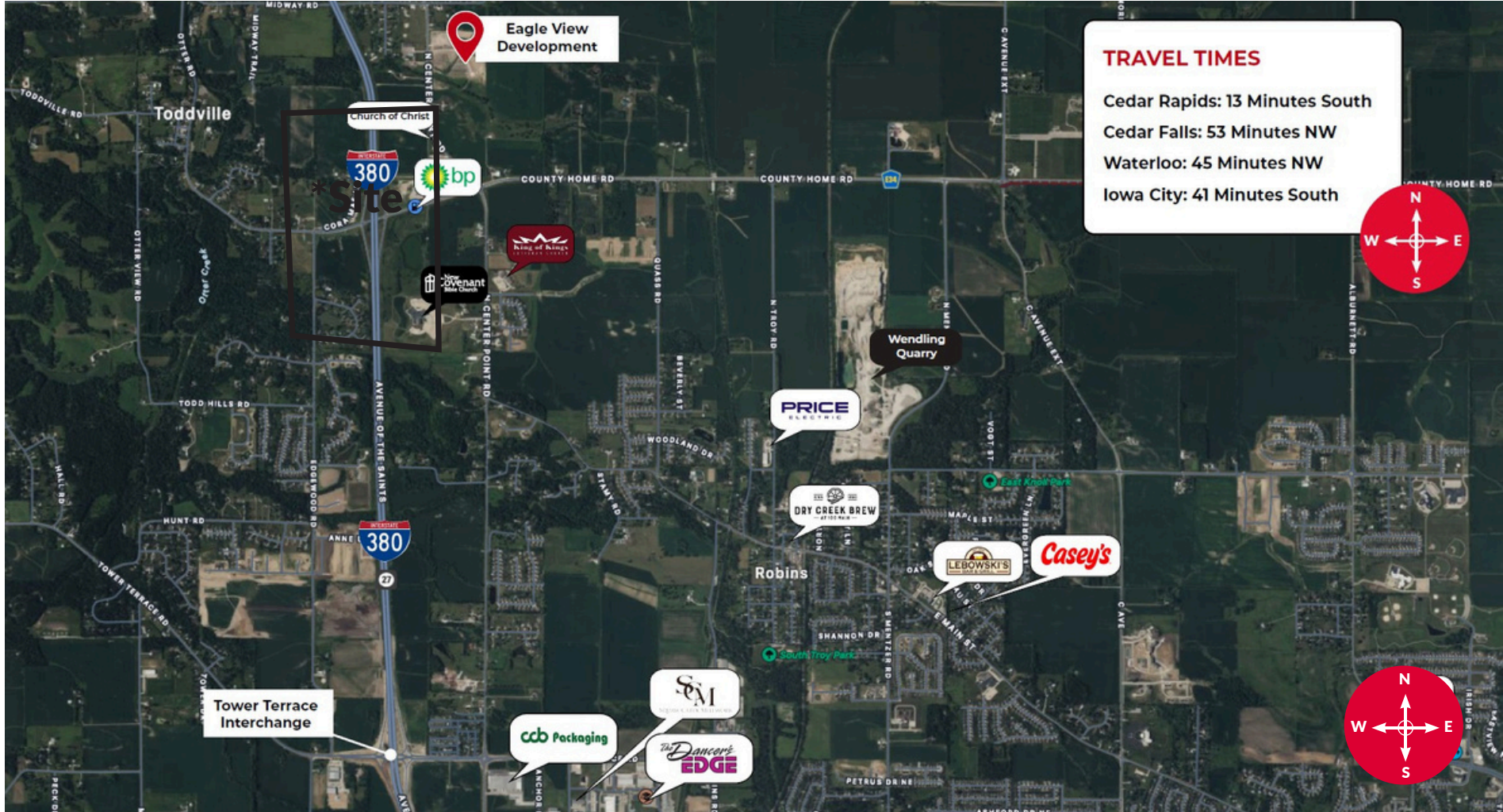
**HEATHER MORRIS, REALTOR®**

(319) 350-7653

heather@heathermorrisrealtor.com | www.heathermorrisrealtor.com

417 1st Avenue SE | Cedar Rapids, IA 52401 | [www.skogmancommercial.com](http://www.skogmancommercial.com)





**HEATHER MORRIS, REALTOR®**

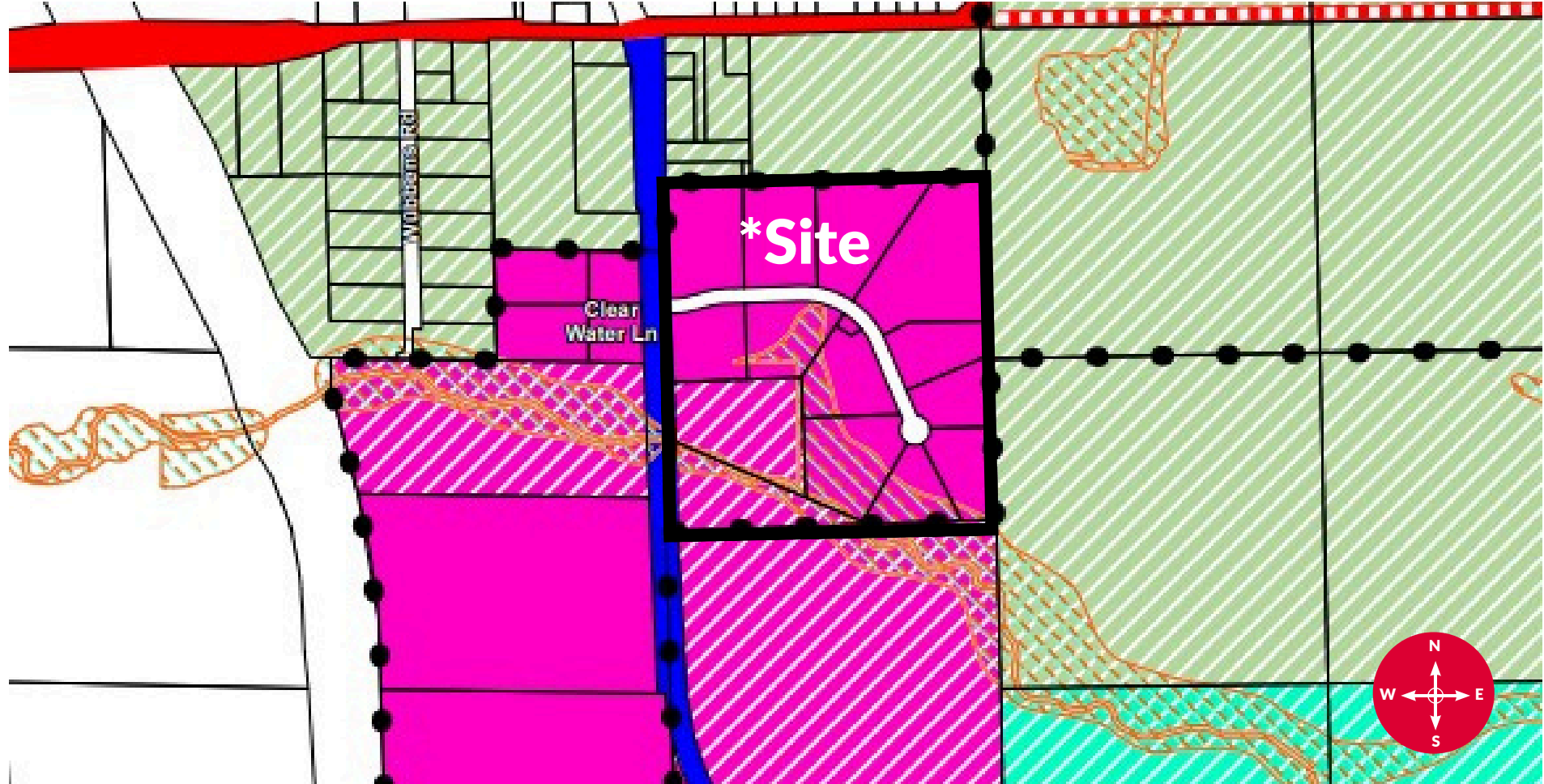
(319) 350-7653

heather@heathermorrisrealtor.com | www.heathermorrisrealtor.com

417 1st Avenue SE | Cedar Rapids, IA 52401 | www.skogmancommercial.com



**ROBINS FUTURE LAND USE MAP**



**HEATHER MORRIS, REALTOR®**

(319) 350-7653

heather@heathermorrisrealtor.com | www.heathermorrisrealtor.com

417 1st Avenue SE | Cedar Rapids, IA 52401 | [www.skogmancommercial.com](http://www.skogmancommercial.com)





**HEATHER MORRIS, REALTOR®**

(319) 350-7653

heather@heathermorrisrealtor.com | www.heathermorrisrealtor.com

417 1st Avenue SE | Cedar Rapids, IA 52401 | [www.skogmancommercial.com](http://www.skogmancommercial.com)