



FOR LEASE  
32979 DUPONT BLVD, MILLSBORO DE 19966



# THE SPACE

Location

32979 Dupont Blvd  
Millsboro, DE 19966

## HIGHLIGHTS

- 2,400+/-sf building For Lease
- Lease price: \$15.00 psf NNN
- Zoned C1

### POPULATION

1.00 MILE	3.00 MILE	5.00 MILE
699	5,251	15,518

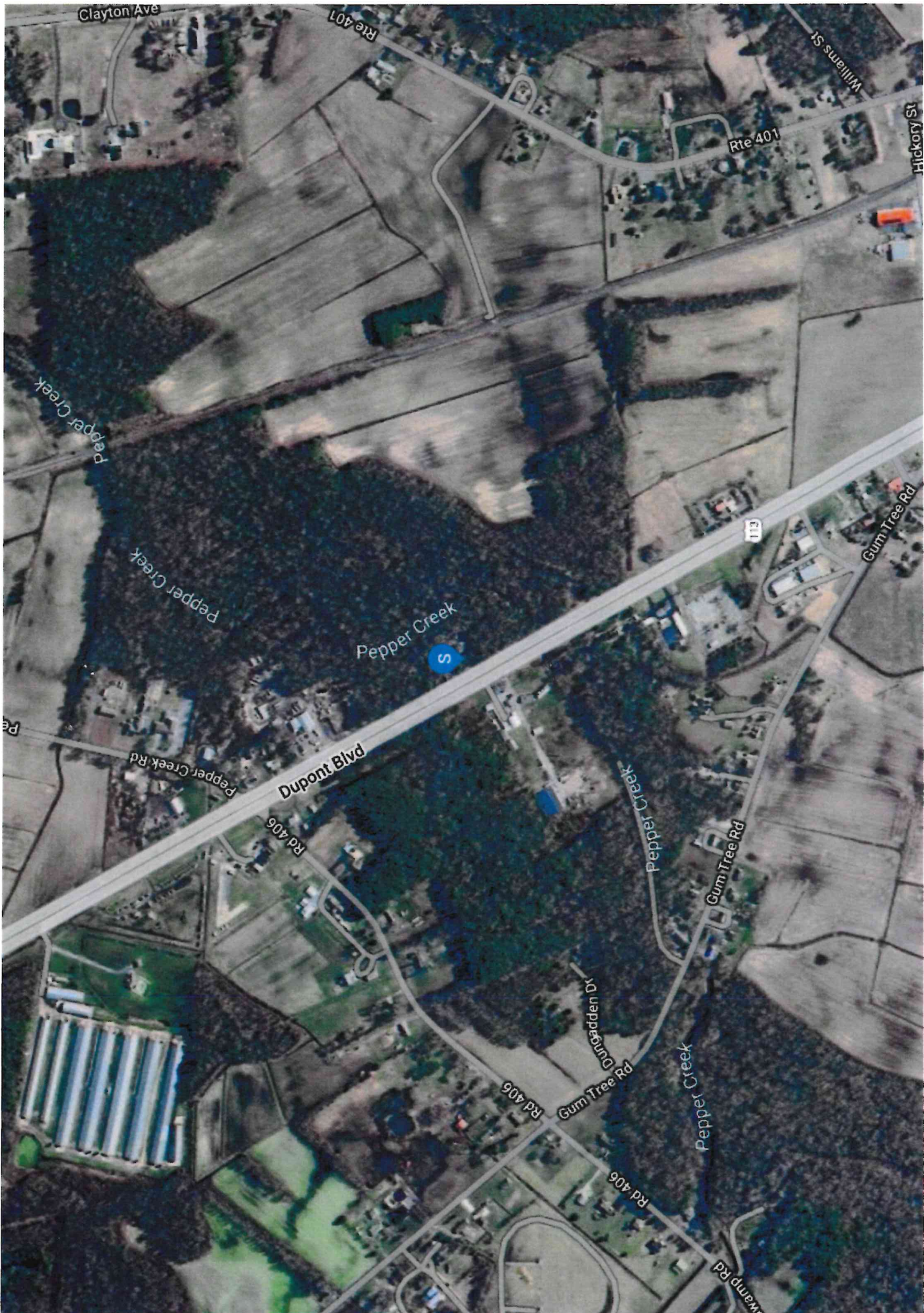
### AVERAGE HOUSEHOLD INCOME

1.00 MILE	3.00 MILE	5.00 MILE
\$108,359	\$119,849	\$104,832

### NUMBER OF HOUSEHOLDS

1.00 MILE	3.00 MILE	5.00 MILE
279	1,938	6,088



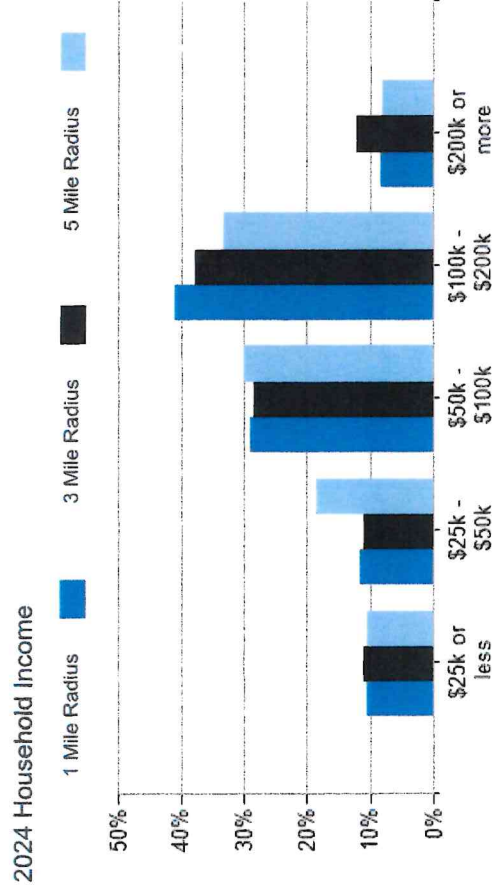
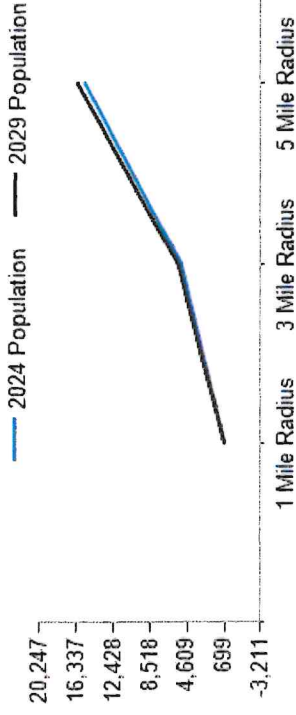




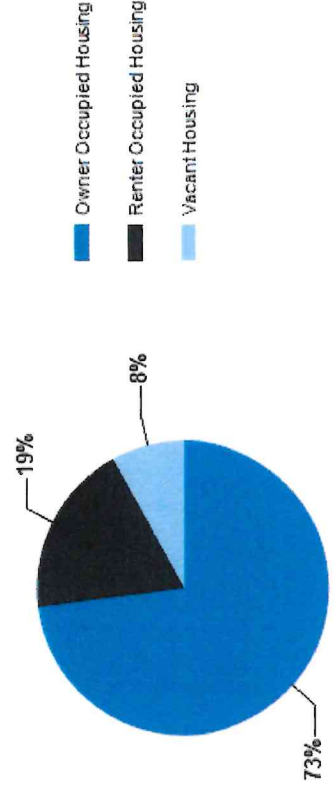
POPULATION	1 MILE	3 MILE	5 MILE
2000 Population	569	3,896	10,511
2010 Population	653	4,661	12,980
2024 Population	699	5,251	15,518
2029 Population	748	5,640	16,337
2024-2029: Population: Growth Rate	6.80%	7.20%	5.15%

2024 HOUSEHOLD INCOME	1 MILE	3 MILE	5 MILE
less than \$15,000	7	70	264
\$15,000-\$24,999	22	143	369
\$25,000-\$34,999	10	79	490
\$35,000-\$49,999	22	134	638
\$50,000-\$74,999	46	323	913
\$75,000-\$99,999	34	227	906
\$100,000-\$149,999	95	565	1,459
\$150,000-\$199,999	19	165	556
\$200,000 or greater	23	232	492
Median HH Income	\$98,137	\$99,020	\$83,458
Average HH Income	\$108,359	\$119,849	\$104,832

HOUSEHOLDS	1 MILE	3 MILE	5 MILE
2000 Total Housing	249	1,637	4,666
2010 Total Households	260	1,682	4,916
2024 Total Households	279	1,938	6,088
2029 Total Households	305	2,122	6,543
2024 Average Household Size	2.50	2.71	2.54
2024-2029: Households: Growth Rate	9.00%	9.15%	7.25%



2024 Own vs. Rent - 1 Mile Radius

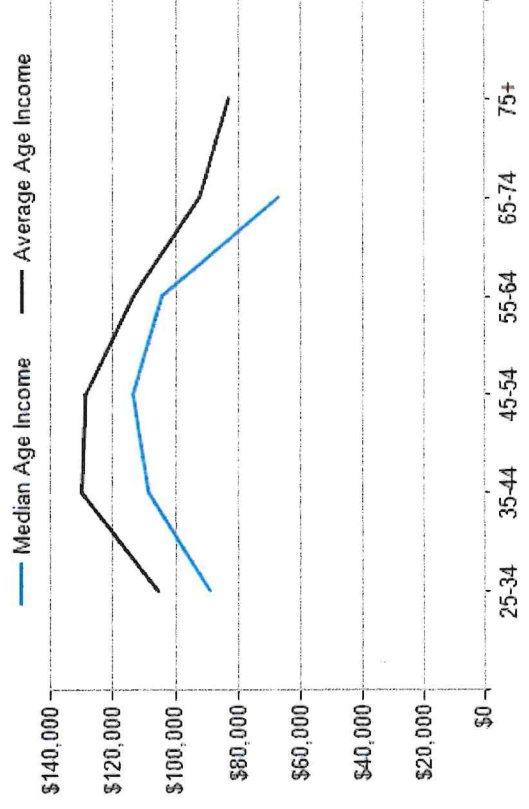
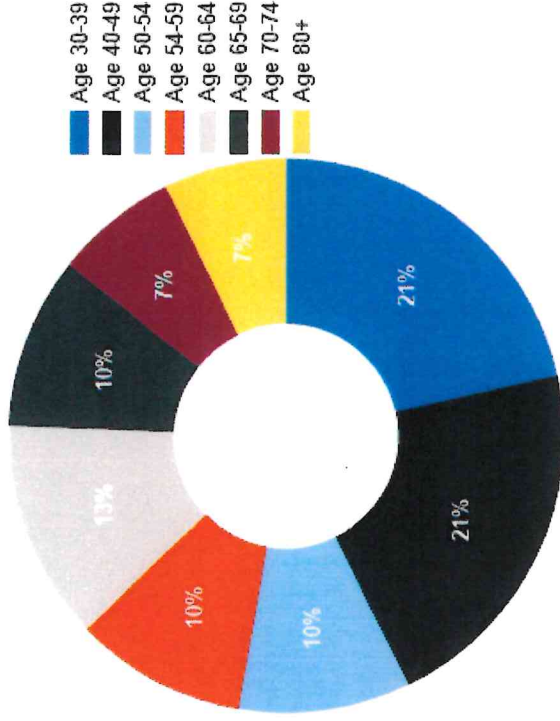


Source: esri



2024 POPULATION BY AGE	1 MILE	3 MILE	5 MILE
2024 Population Age 30-34	48	333	898
2024 Population Age 35-39	42	302	910
2024 Population Age 40-44	51	350	979
2024 Population Age 45-49	38	271	846
2024 Population Age 50-54	42	308	873
2024 Population Age 55-59	42	314	949
2024 Population Age 60-64	54	423	1,207
2024 Population Age 65-69	42	371	1,125
2024 Population Age 70-74	30	272	990
2024 Population Age 75-79	30	260	816
2024 Population Age 80-84	16	138	441
2024 Population Age 85+	14	115	350
2024 Population Age 18+	549	4,180	12,316
2024 Median Age	41	43	44
2029 Median Age	42	44	45

2024 INCOME BY AGE	1 MILE	3 MILE	5 MILE
Median Household Income 25-34	\$89,002	\$91,905	\$80,090
Average Household Income 25-34	\$105,483	\$121,788	\$102,077
Median Household Income 35-44	\$108,572	\$111,938	\$103,385
Average Household Income 35-44	\$130,191	\$140,373	\$122,293
Median Household Income 45-54	\$113,601	\$113,621	\$103,095
Average Household Income 45-54	\$129,050	\$135,382	\$119,907
Median Household Income 55-64	\$104,361	\$106,654	\$95,349
Average Household Income 55-64	\$113,671	\$131,627	\$116,236
Median Household Income 65-74	\$67,029	\$73,417	\$75,473
Average Household Income 65-74	\$92,542	\$106,853	\$97,046
Average Household Income 75+	\$83,125	\$91,941	\$79,203



## CONFIDENTIALITY and DISCLAIMER

The information contained in the following offering memorandum is proprietary and strictly confidential. It is intended to be reviewed only by the party receiving it from R and R Commercial Realty and it should not be made available to any other person or entity without the written consent of R and R Commercial Realty.

By taking possession of and reviewing the information contained herein the recipient agrees to hold and treat all such information in the strictest confidence. The recipient further agrees that recipient will not photocopy or duplicate any part of the offering memorandum. If you have no interest in the subject property, please promptly return this offering memorandum to R and R Commercial Realty. This offering memorandum has been prepared to provide summary, unverified financial and physical information to prospective tenants, and to establish only a preliminary level of interest in the subject property.

The information contained herein is not a substitute for a thorough due diligence investigation. R and R Commercial Realty has not made any investigation, and makes no warranty or representation with respect to the income or expenses for the subject property, the future projected financial performance of the property, the size and square footage of the property and improvements, the presence or absence of contaminating substances, PCBs or asbestos, the compliance with local, state and federal regulations, the physical condition of the improvements thereon, or financial condition or business prospects of any tenant, or any tenant's plans or intentions to continue its occupancy of the subject property.

The information contained in this offering memorandum has been obtained from sources we believe reliable; however, R and R Commercial Realty has not verified, and will not verify, any of the information contained herein, nor has R and R Commercial Realty conducted any investigation regarding these matters and makes no warranty or representation whatsoever regarding the accuracy or completeness of the information provided. All potential buyers must take appropriate measures to verify all of the information set forth herein. Prospective buyers shall be responsible for their costs and expenses of investigating the subject property.

Exclusively Marketed by:

**Kyle Salmon**  
R and R Commercial Realty  
Lester Realty  
(302) 382-0953  
(302) 674-3400  
kyle.salmon@lesterrealtyde.  
com



randcommercialrealty.com

46 S. State Street, Dover, DE 19901

powered by CREOP