

111 ADAMS STREET
CARY, NC 27513



Will Judy, Broker
wjudy@lee-associates.com
O 919.576.2513
M 919.606.1956

OFFICE FOR LEASE

 LEE & ASSOCIATES
COMMERCIAL REAL ESTATE SERVICES
RALEIGH • DURHAM • WILMINGTON

AVAILABILITY

- 1,015 SF, 2-story office for lease
- Lease rate: Contact broker

[View Additional Photos
and Property Video](#)

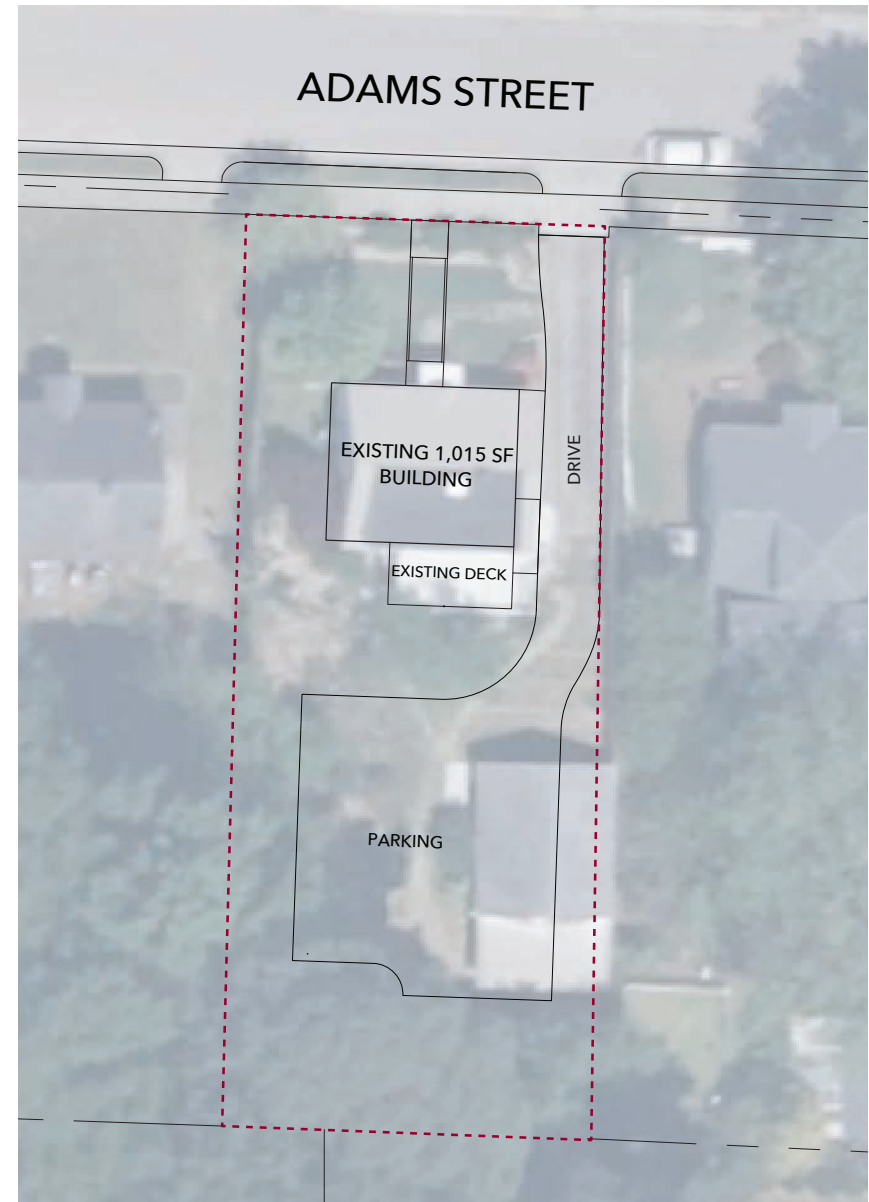
PROPERTY OVERVIEW

- Free-standing building with (4) private offices, (1) conference room/ open work area, (2) bathrooms, and break room
- Exclusive parking area
- Located on Adams Street near the intersection of Chapel Hill Road and N. Academy Street
- Walking distance to Downtown Cary

DEMOGRAPHICS

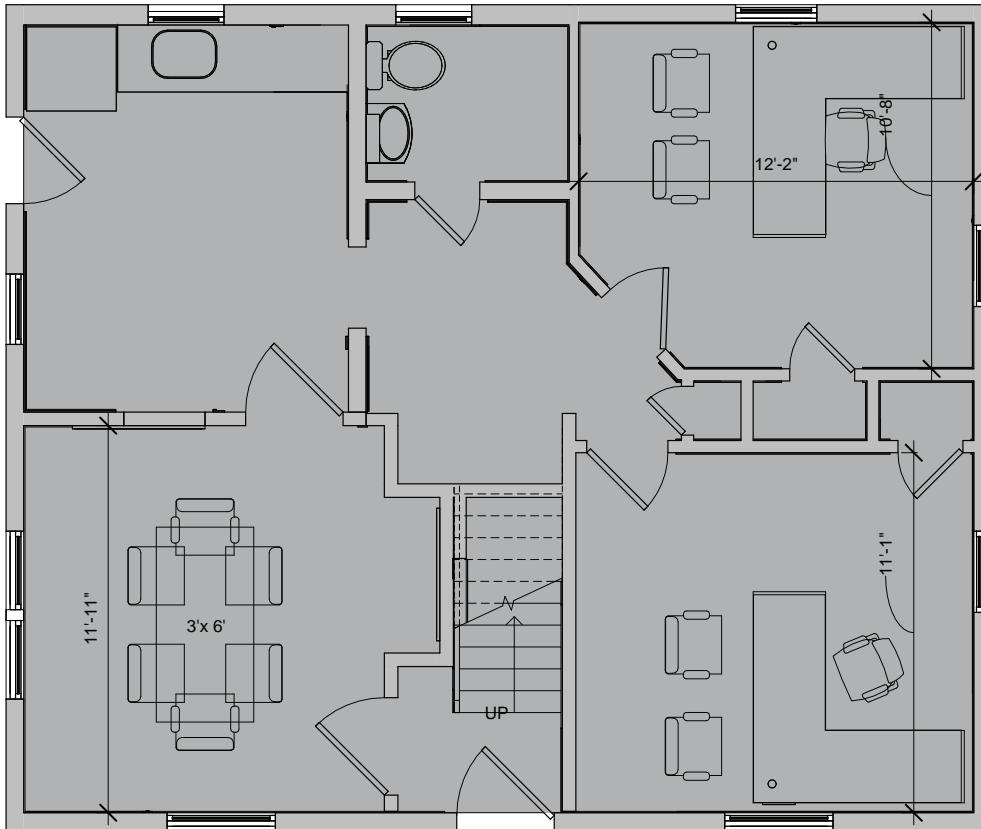
	1 Mile	3 Miles	5 Miles
Population	11,750	86,204	186,944
Average HH Income	\$116,312	\$140,528	\$151,617
No. of Businesses	737	4,358	9,823
No. of Employees	5,747	45,026	120,971
Daytime Population	12,791	95,579	238,108

Source: ESRI 2025

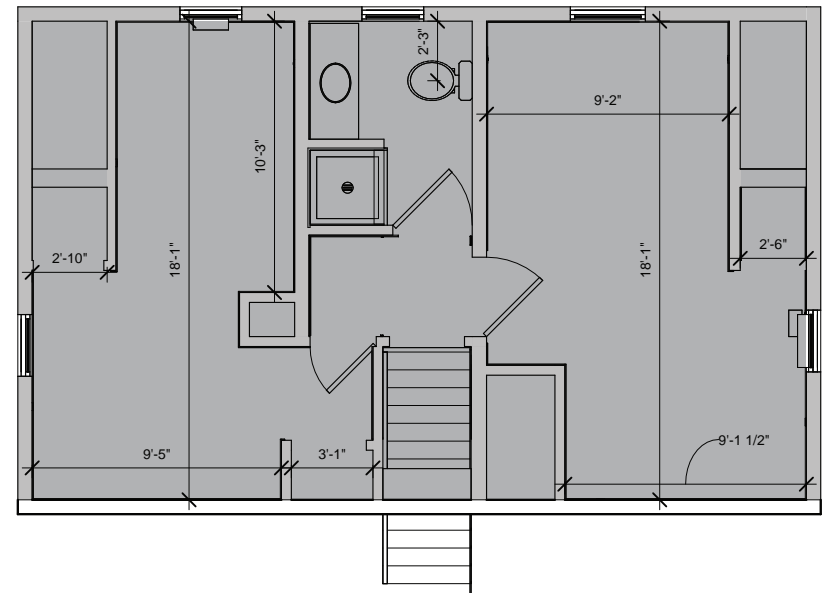


OFFICE FOR LEASE
111 ADAMS STREET
CARY, NC 27513

1st Floor



2nd Floor



OFFICE FOR LEASE
111 ADAMS STREET
CARY, NC 27513

LEE & ASSOCIATES
COMMERCIAL REAL ESTATE SERVICES
RALEIGH • DURHAM • WILMINGTON



RESTAURANTS, RETAIL, BREWERIES AND MORE IN DOWNTOWN CARY:

RESTAURANTS & CAFES

- | | |
|-------------------------------|-----------------------------------|
| 1. Annelore's German Bakery | 12. Di Fara Pizza Tavern |
| 2. Bosphorus | 13. Hank's Downtown Dive |
| 3. Upper Deck Sports Pub | 14. Taipei 101 |
| 4. Zest Sushi & Small Plates | 15. BREW Coffee Bar |
| 5. SAAP | 16. FRESH. Local Ice Cream |
| 6. La Farm Bakery | 17. Crosstown Pub & Grill |
| 7. Kababish Cafe | 18. MilkShake Factory |
| 8. Academy Street Bistro | 19. Scratch Kitchen & Taproom |
| 9. Once in a Blue Moon Bakery | 20. Big Dom's Bagel |
| 10. Serendipity Deli | 21. Pizzeria Faulisi |
| 11. Esteamed Coffee | 22. Pro's Epicurean Market & Cafe |
| | 23. MC Restaurant |

BREWERIES & BARS

- | | |
|-------------------------------|--------------------------------------|
| 1. Triangle Beer Co. | 6. The Walk Up |
| 2. SideBar | 7. Bull City Cider Works |
| 3. Bond Brothers | 8. RBF, Your Authentic Champagne Bar |
| 4. Chatham Street Wine Market | |
| 5. Pharmacy Bottle + Beverage | |

RETAIL

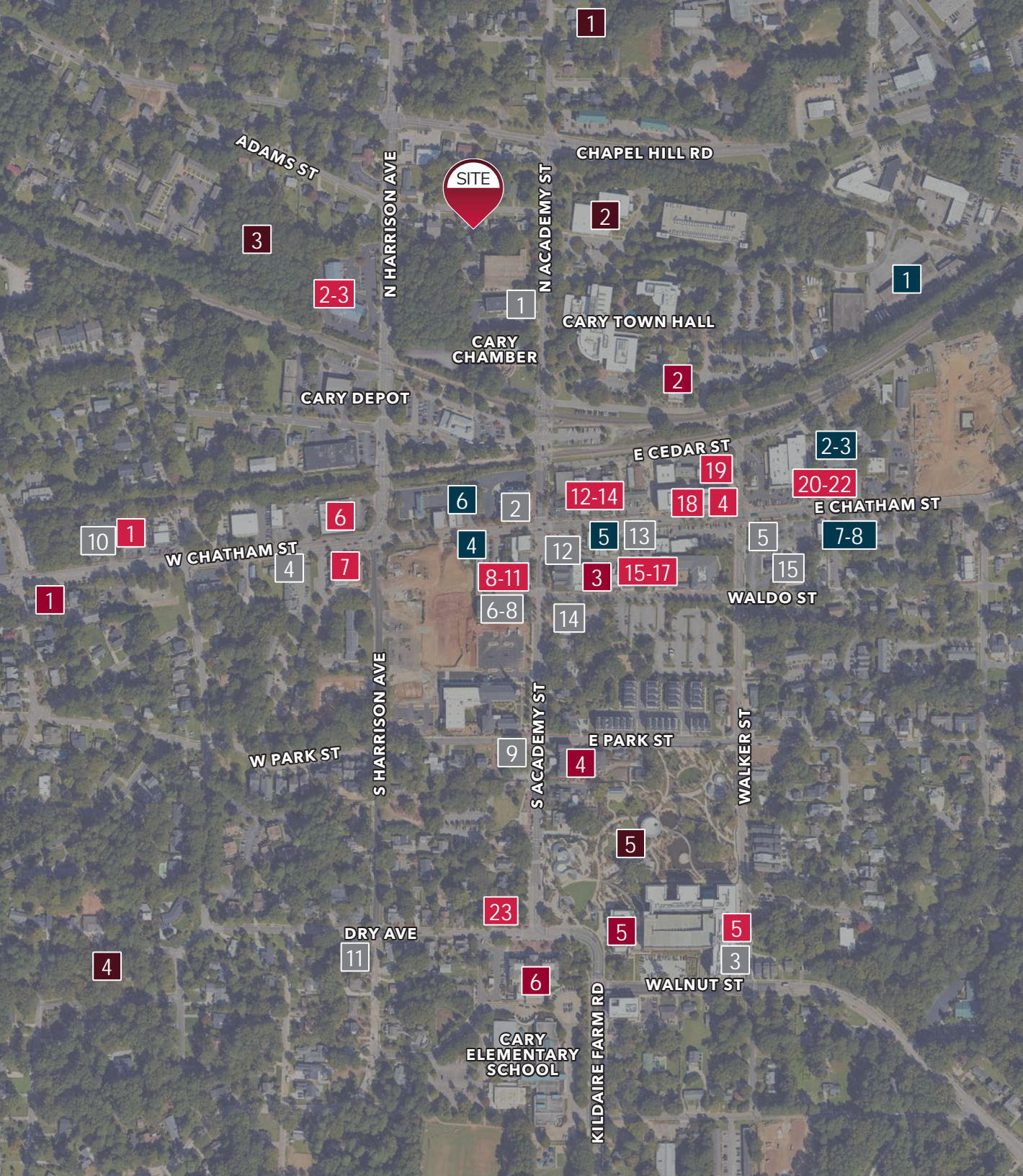
- | | |
|---------------------------|--------------------------------|
| 1. First Bank | 9. Lana Addison Bridal |
| 2. Fidelity Bank | 10. Chocolate Smiles |
| 3. The Now | 11. Stonehaven Jewelry Gallery |
| 4. Cary Florist | 12. Kitchen & Bath Galleries |
| 5. Cary Farmers Market | 13. Johnson's Jewelers |
| 6. Peak Olive Oil Company | 14. US Postal Service |
| 7. Warm 'n Fuzzy | 15. The Perfect Piece |
| 8. Vintage Vogue | |

FITNESS & RECREATION

- | | |
|--------------------------------------|-----------------------|
| 1. Aradia Fitness Cary | 4. Heater Park |
| 2. Herbert C. Young Community Center | 5. Downtown Cary Park |
| 3. Ignium Strength | |

ENTERTAINMENT & VENUES

- | | |
|----------------------------|---------------------------------|
| 1. The Matthews House | 4. The Mayton |
| 2. Page-Walker Arts Center | 5. Cary Regional Library Center |
| 3. The Cary Theater | 6. Cary Arts Center |



PRESENTED BY

WILL JUDY, BROKER

wjudy@lee-associates.com

O 919.576.2513

M 919.606.1956



LEE &
ASSOCIATES

COMMERCIAL REAL ESTATE SERVICES
RALEIGH • DURHAM • WILMINGTON



100 Walnut Street | Cary, NC 27511 | 919-576-2500 | lee-associates.com/raleigh

All information furnished regarding property for sale, rental or financing is from sources deemed reliable, but no warranty or representation is made to the accuracy thereof and same is submitted to errors, omissions, change of price, rental or other conditions prior to sale, lease or financing or withdrawal without notice. No liability of any kind is to be imposed on the broker herein.