

805

HIGH ST

WESTWOOD, MA
02090

FOR LEASE

STOREFRONT RETAIL/OFFICE



AVAILABILITY

- Approximately 829 SF of office space on the ground floor. Includes walk out from rear entrance.
- Pylon Signage in front of building
- Ample on-site Parking with 19 +/- Spaces
- Join: Westwood Dental, Elite Orthodontics, Paul Dagincourt, M.D, Keith Cohen, Ph.D & High Street Hair Suite
- Ideal uses include: Medical Spa, psychotherapy, and various health related uses



WESTWOOD, MA

GODINO
& COMPANY, INC.

TOM GODINO
President
617-965-4200 x1
tgodinosr@godinoco.com

SUSAN ELLIS
Vice President
617-965-4200 x2
sgodino-ellis@godinoco.com

805 HIGH ST.

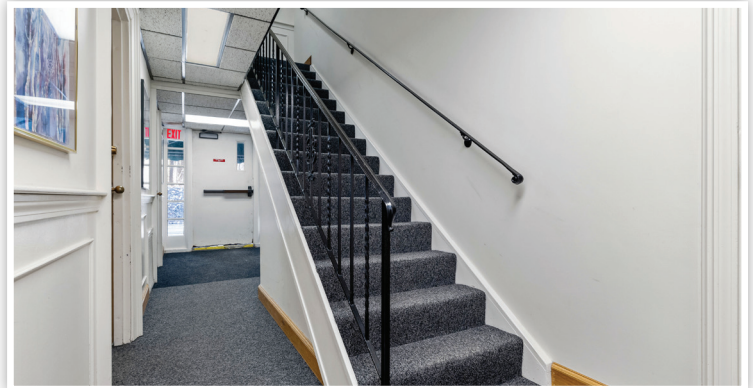
WESTWOOD, MA
02090

BUILDING / AREA ATTRIBUTES

- Located along prominent High Street (Rte. 109), Westwood, MA. Direct Access to 95/128. Easy access to public transportation: 3.4 miles to Islington Commuter Rail (Franklin Line) and 4 miles to Dedham Corporate Center Commuter Rail (Franklin Line)
- Professionally managed
- Numerous nearby amenities include Westwood Town Hall, Starbucks, Walgreens Pharmacy, Santander Bank, Dedham Savings Bank, Citizens Bank, Comella's Restaurant, Perfect Nail, Westwood's Barber Shop, Westwood Post Office, Playa Bowls & High Street Market

BUILDING DETAILS:

- 3 Story Building with direct access at street level
- Building Size: Approximately 6,000 SF



GODINO
& COMPANY, INC.

TOM GODINO
President
617-965-4200 x1
tgodinosr@godinoco.com

SUSAN ELLIS
Vice President
617-965-4200 x2
sgodino-ellis@godinoco.com