

# HARDING HIGHWAY

DISTRIBUTION CENTER

970 HARDING HIGHWAY | CARNEY'S POINT, NJ



CUSHMAN &  
WAKEFIELD

SUBLEASE THROUGH 2/2029

±33,000 SF

FLEXIBLE



±20  
CAR  
PARKS



±6  
TRAILER  
PARKS



±3  
LOADING  
DOCKS



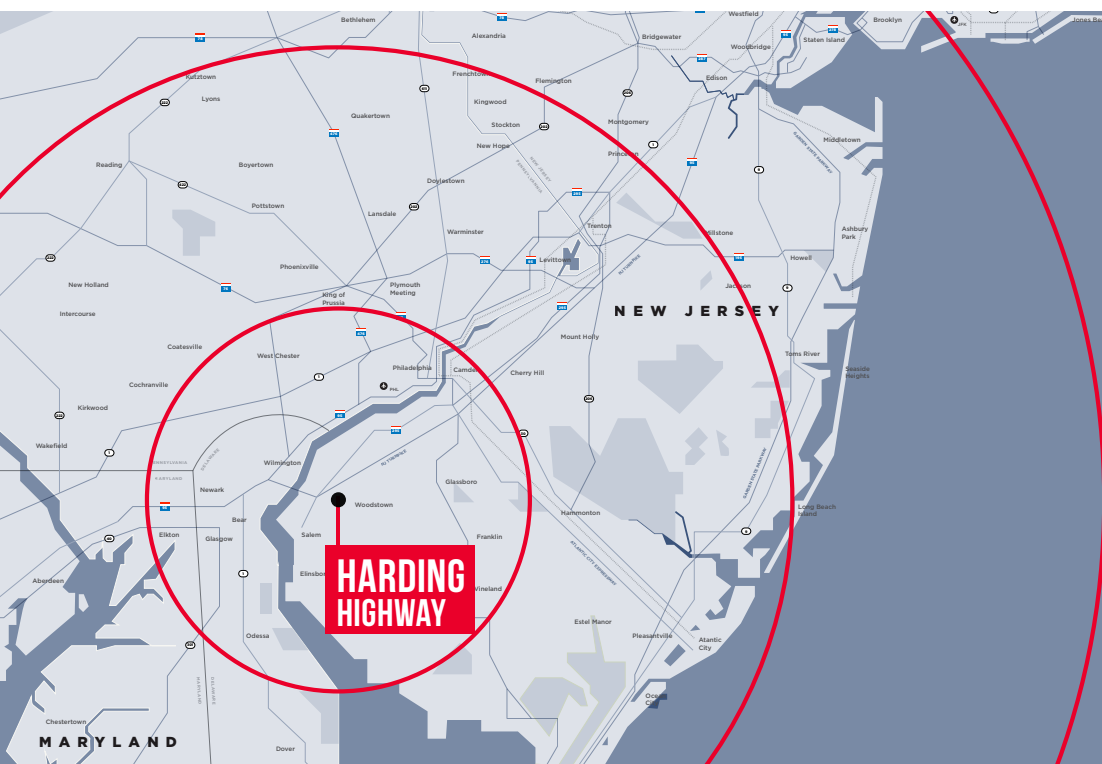
**John Gartland**  
Executive Managing Director  
856 403 9535  
[john.gartland@cushwake.com](mailto:john.gartland@cushwake.com)

**Sean Duncan**  
Senior Associate  
610 484 4793  
[sean.duncan@cushwake.com](mailto:sean.duncan@cushwake.com)

 **TA REALTY**



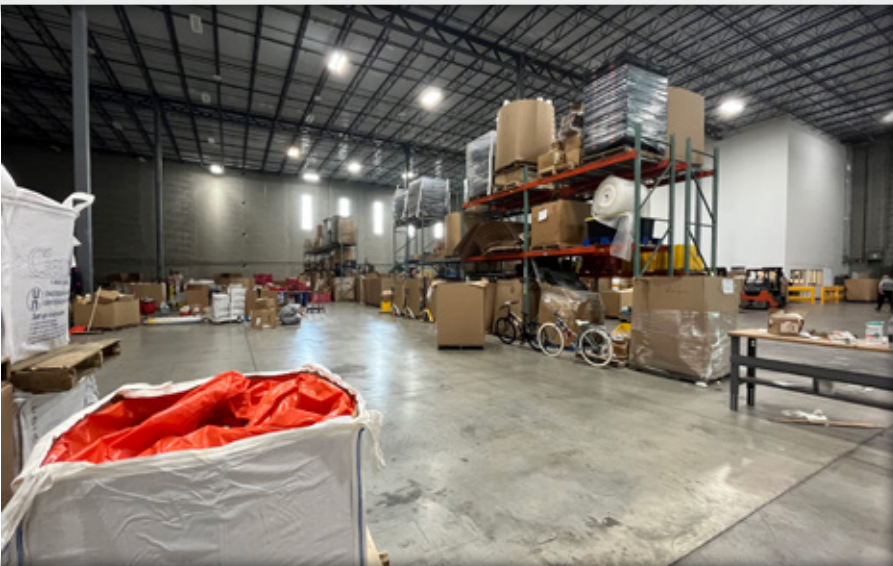
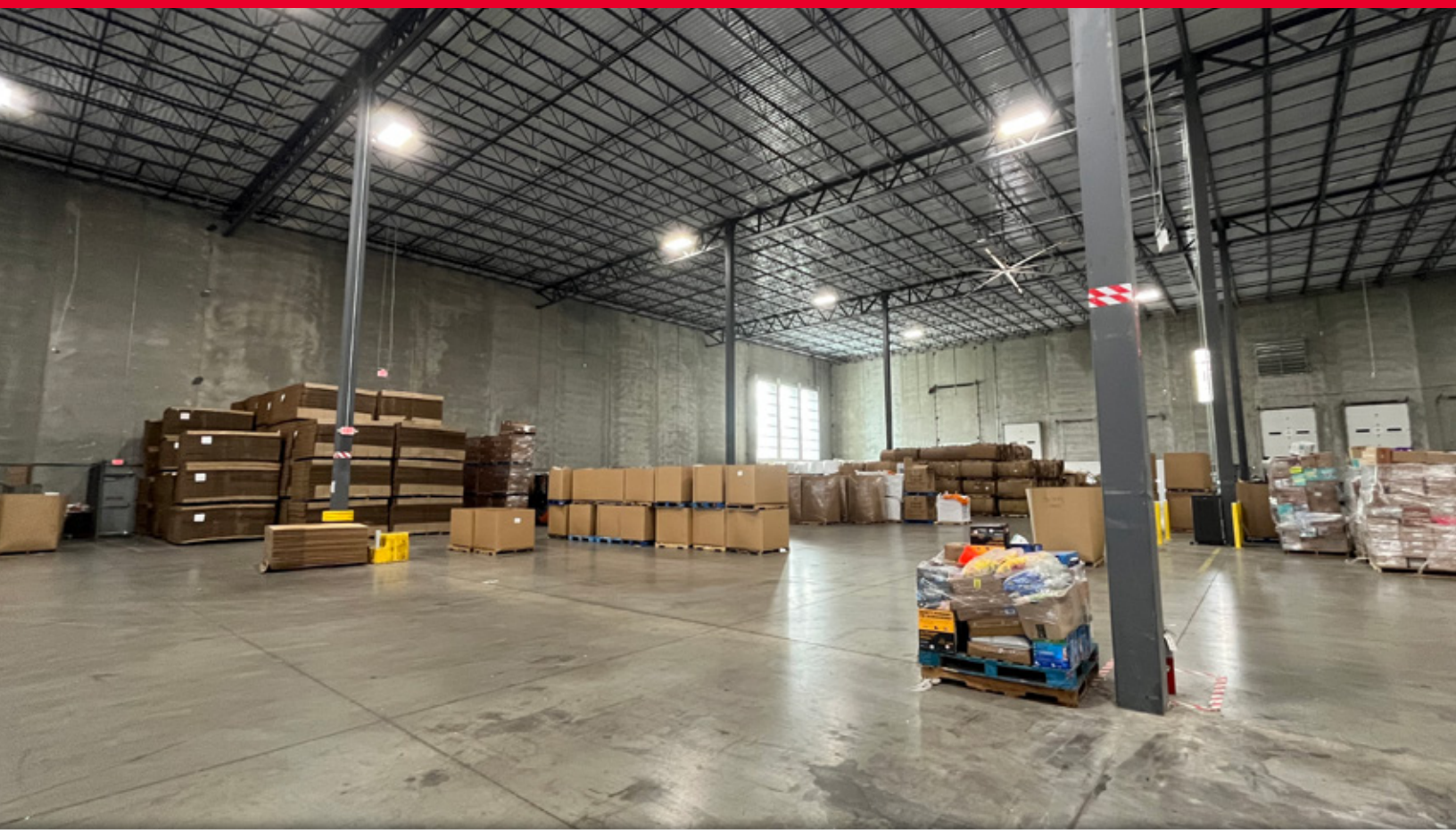
**3.5 MI.** to NJ Turnpike | **2.7 MI.** to Route I-295 | **5 MI.** from DE Mem. Bridge | **13 MI.** from Comm. Barry Br.



#### DISTANCE TO:

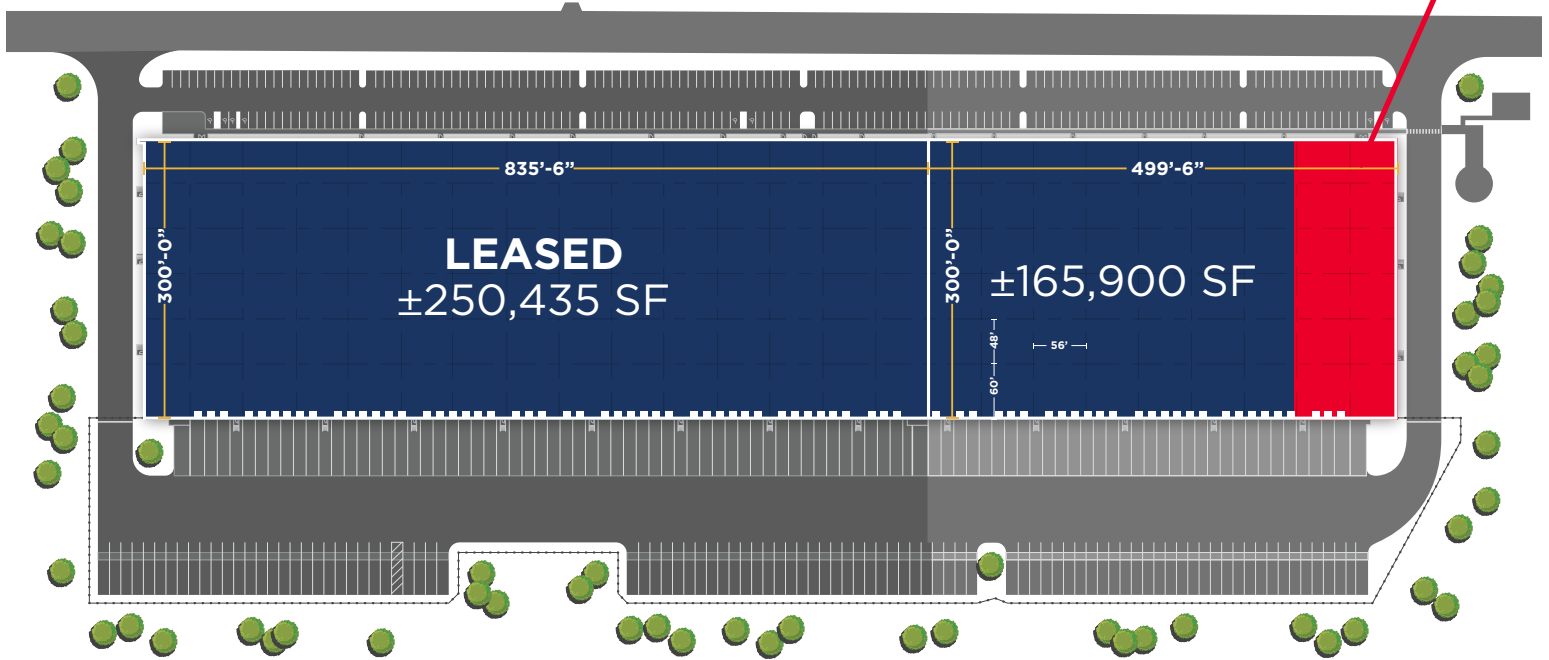
WILMINGTON	12 MILES
PHILADELPHIA	35 MILES
BALTIMORE	81 MILES
HARRISBURG	98 MILES
WASHINGTON D.C.	115 MILES
NEW YORK CITY	119 MILES
BOSTON	332 MILES





# SITE SPECIFICATIONS

SUBLEASE AVAILABLE  
THROUGH 2/2029



**LEASABLE AREA:** ±33,000 SF (FLEXIBLE)

**TOTAL BUILDING SF:** ±400,500 SF

**LOADING DOCKS:** ±3 Docks

**TRAILER STALLS:** ±6 Stalls

**DRIVE-IN:** ±1 Drive-In

**AUTO SPACES:** ±20 Spaces

**CLEAR HEIGHT:** 40'

**FIRE PROTECTION:** ESFR

**COLUMN SPACING:** 56' x 48'

**OFFICE:** Common Shared Space

**John Gartland**  
Executive Managing Director  
856 403 9535  
[john.gartland@cushwake.com](mailto:john.gartland@cushwake.com)

**Sean Duncan**  
Senior Associate  
610 484 4793  
[sean.duncan@cushwake.com](mailto:sean.duncan@cushwake.com)



Cushman & Wakefield Copyright 2025. No warranty or representation, express or implied, is made to the accuracy or completeness of the information contained herein, and same is submitted subject to errors, omissions, change of price, rental or other conditions, withdrawal without notice, and to any special listing conditions imposed by the property owner(s). As applicable, we make no representation as to the condition of the property (or properties) in question.