

43" HIGH CABLE RAIL AND POST ASSEMBLY AS APPROVED BY OWNER

NEW ENCLOSED REFR. PRESURE TREATED WOOD CABINETS. PROVIDE 1/2" GRANULAR BARRIER @ 3/4" - 3/8" ABOVE FINISH FLOOR OF MOIST. NO PART OF CABLE RAIL ASSEMBLY TO PENETRATE THROUGH OF A 4" SPHERE, TYP.

6x6 P.T. POST AT COVERED DECK. WRAP WITH ALUM. AND PROVIDE DECORATIVE BEVELED PANEL DESIGN OR AS APPROVED BY OWNER.

WRAP ALL BEAMS AND CORERS WITH DECORATIVE ALUM. TRIM AS APPROVED BY OWNER.

ALL WINDOWS AT GREAT ROOM TO ALIGN VERTICALLY. COORDINATE W/ FLOOR PLAN.

5/8" FIRE CODE OPTION BOARD AT ALL OUTSIDE GARAGE WALL, TYP.

1-LAYER 5/8" FIRE CODE OPTION BOARD ON EACH SIDE OF INTERIOR GARAGE WALLS. ALIGNED GARAGE WITH R-21 BATT, TYP.

FULLY ENCLOSED SURFACE MOUNTED FLUORESCENT LIGHTS WITH LED AS UL APPROVED FOR DAMP LOCATIONS WITH COLD START BALLAST.

2-LAYERS 5/8" FIRE CODE OPTION BOARD AT CEILING. SEE 1-HOUR 18 PER RISING DETAIL.

EXPOSED CONCRETE SLAB TO OUTSIDE FACE OF FOUNDATION AT MASONRY OPENINGS, TYP.

1-1/2" DIA GRANULAR BARRIER AT FINISH AT 3/4" - 3/8" ABOVE FINISH.

4x4 POST MOUNTED TO BEAM @ 5'-0" O.C. MAX.

CABLE RAIL TO BE 1/4" DIA. TO PASS THROUGH PASSAGE OF 4" SPHERE.

NOTE: PROVIDE BEARING STRUCTURE OR JOIST AT 3' O.C.

2 RAILING SECTION SCALE: 1" = 1'-0"

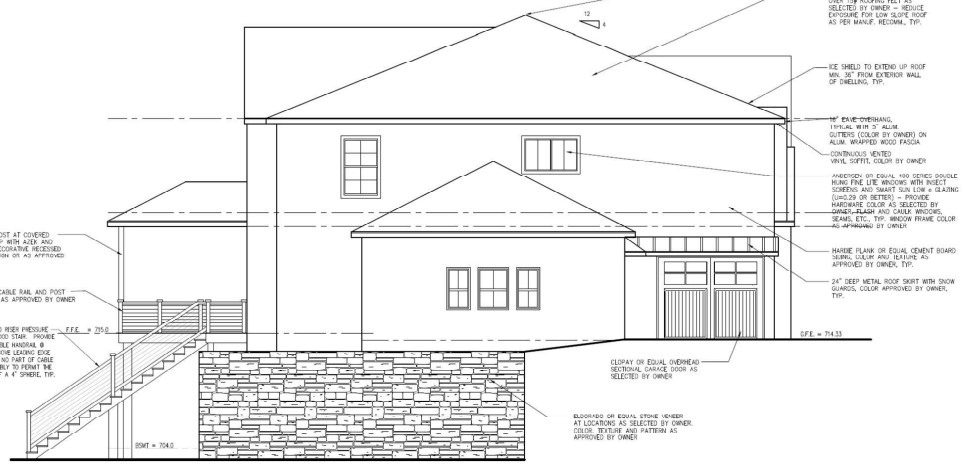
3 RAILING ELEVATION SCALE: 1" = 1'-0"

1 FIRST FLOOR PLAN SCALE: 1/4" = 1'-0"

- GENERAL NOTES:**
1. FRAMING AND STRUCTURAL LUMBER TO BE DUG-PINE NO.2 OR BETTER.
 2. ALL WINDOWS TO BE AMERICAN AND SERIES OR EQUAL, WOOD OR ALUM. AS APPROVED BY OWNER. AND TOP TO BE 1/2" ABOVE FINISH. ALL OPERABLE WINDOW HARDWARE TO BE SELECTED BY OWNER. GLAZING TO BE CLEAR. LOW E. SIA. EXTERIOR FINE COLOR. (UNLESS NOTED TO BE A FIRE DOOR). AND ARE TO BE FINISHED AND PAINTED WITH TWO COATS. COLOR AS SELECTED BY OWNER. DOORS TO HAVE FINISH AS APPROVED BY OWNER.
 3. STONE FINISH TO BE SELECTED BY OWNER. EXTERIOR HARD COAT TO BE SELECTED BY OWNER. TEXTURE, COLOR, AND EXPOSURE AS APPROVED BY OWNER.
 4. ALL INTERIOR DOORS TO BE SOLID CORE MANDARIN DOORS. (UNLESS NOTED TO BE A FIRE DOOR). AND ARE TO BE FINISHED AND PAINTED WITH TWO COATS. COLOR AS SELECTED BY OWNER. DOORS TO HAVE FINISH AS APPROVED BY OWNER.
 5. ALL NEW FORM BOARD TO BE FINISH AND SPACED 15" ON CENTER. BRIMS ON OUTSIDE CORERS. APPLY ONE COAT OF FINISH AND TWO COATS OF PAINT TO ALL EXTERIOR SURFACES. EQUAL TO BE FINISHED AND PAINTED WITH TWO COATS. COLOR AS SELECTED BY OWNER.
 6. INTERIOR FLOOR FINISHES TO BE 1/2" WITH CONTINUOUS 1/2" PLYWOOD SPACER. EXTERIOR WINDOW HEADERS TO BE 110x12 WITH CONTINUOUS 1/2" PLYWOOD SPACER UP TO 6'-4" RISE.
 7. COORDINATE TELEPHONE, COAXIAL CABLE, TV OUTLETS, AND ANY LOW VOLTAGE WITH OTHER TRADES.
 8. ALL INTERIOR TRIM, BACEDRUM, DOOR AND WINDOW CASINGS TO BE PAINTED WITH THE HOLDING PROFILE AND PAINT COLOR AS APPROVED BY OWNER.
 9. ALL MOISTURE RESISTANT TO BE 110x INTERCONNECTED WITH BATTERY BACK-UP, AND ARE TO BE PLACED IN EACH BEDROOM AND IN ALL OUTSIDE BEDROOMS ON EACH LEVEL. WITH CAREFUL COORDINATION WITH OTHER TRADES. THESE DETAIL TO BE PLACED ON ALL LEVELS AT THRESHOLD OF FINISH TO LEVEL ABOVE.
 10. IF CHANGING TO BE WIPED FOR INTERIOR, SURROUND SOUND, SPEAKERS, AND ALUM. SYSTEM. COORDINATE WITH OWNER.



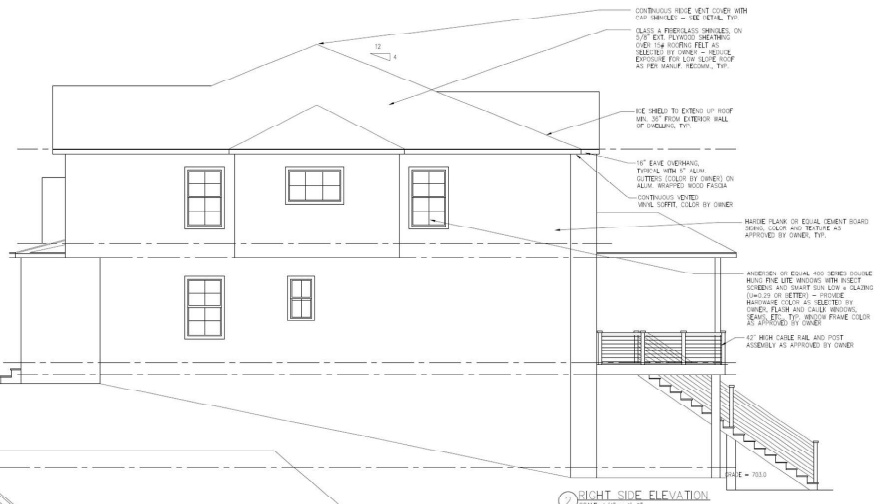
1 FRONT ELEVATION
SCALE: 1/4" = 1'-0"



2 LEFT SIDE ELEVATION
SCALE: 1/4" = 1'-0"

NOTES:

1. TEMPERED GLAZING AT ALL WINDOWS WITH OVER 9" OF GLAZING. GLASS LESS THAN 16" ABOVE FINISHED FLOOR AND WITHIN 36" OF FLOOR FINISH. ALL WINDOWS IN BATHROOMS AND IN CHIMNELS.
2. ELEVATOR MATERIALS, COLORS AND DIMENSIONS ARE SUBJECT TO OWNER'S SELECTION AND APPROVAL. OWNER SHALL COORDINATE WITH ARCHITECT, COLOR AND DIMENSIONS WITH GENERAL CONTRACTOR WHO SHALL BID ON THE MATERIALS AS SELECTED BY THE OWNER. ALSO FOR ALL ATTACHMENTS, FLASHINGS, ETC. MUST NOT BE SHOWN OR NOTED TO SMALL INSTALLATION IN STRICT ACCORDANCE WITH MANUFACTURER'S INSTALLATION INSTRUCTIONS. INCLUDE RECOMMENDED DIMENSIONS, ATTACHMENT METHODS, FLASHINGS, ETC.
3. OWNER AND GENERAL CONTRACTOR SHALL HAVE FULL RESPONSIBILITY FOR MATERIALS INSTALLATIONS AND WARRANTIES OF BOTH MATERIALS AS THEY MAY DIFFER FROM THAT AS SHOWN ON THIS "BUILDER'S SET" AS PER OWNER'S FINAL MATERIAL SELECTION.



2 RIGHT SIDE ELEVATION
SCALE 1/4" = 1'-0"



1 REAR ELEVATION
SCALE 1/4" = 1'-0"